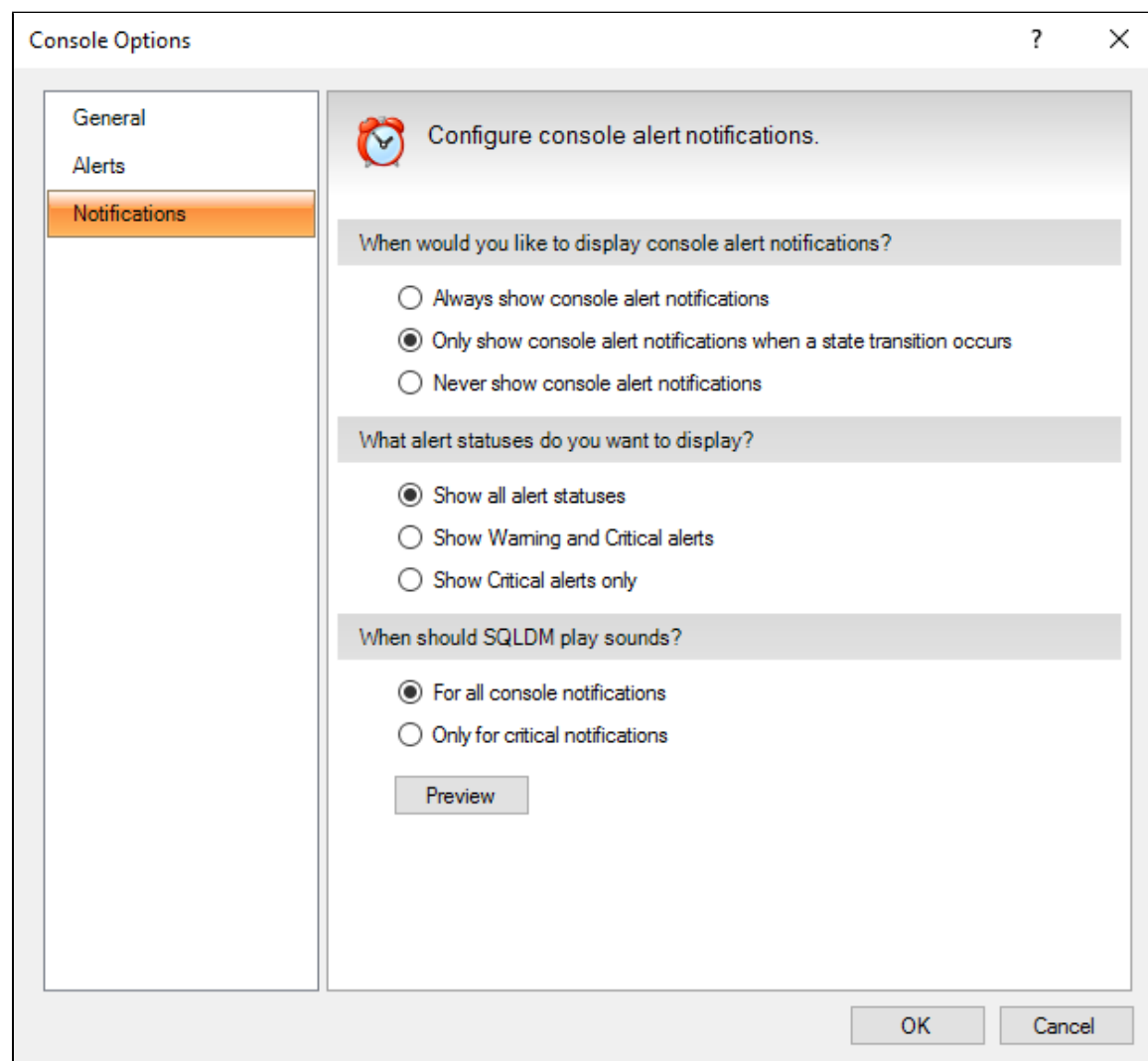


Configure console options

You can specify a number of console options in the Console Options window that affect overall product behavior. To access the Console Options window, select **Tools > Console Options** from the SQL Diagnostic Manager Console toolbar.

The following tabs are available on the Console Options window:



General

The [General tab](#) allows you to set how often the console refreshes data, hide the Console when minimized, select how SQL Diagnostic Manager manages chart data, choose what colors you want SQL Diagnostic Manager to use, and enable the Baseline view.

Alerts

The [Alerts tab](#) allows you to limit the number of historical alerts displayed in the Alerts view, which can improve the performance of the view when there is a large number of alerts.

Notifications

The [Notifications tab](#) allows you to configure how SQL Diagnostic Manager notifies you when alert data crosses a threshold.

SQL Diagnostics Manager for SQL Server performance monitoring, alerting, and diagnostics for SQL Server.

[IDERA](#) | [Products](#) | [Purchase](#) | [Support](#) | [Community](#) | [Resources](#) | [About Us](#) | [Legal](#)