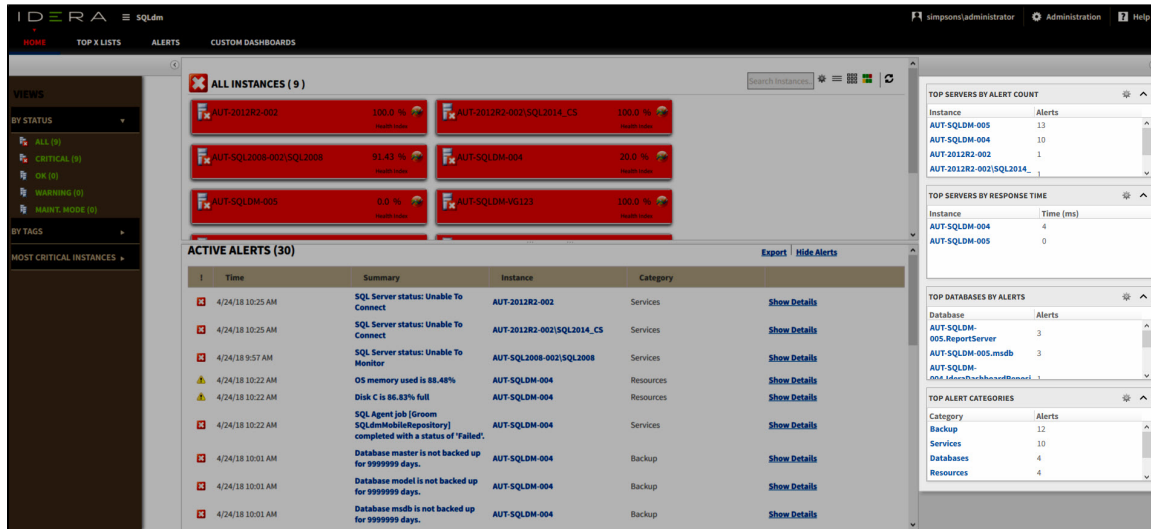


# Use widgets for tailored information

The widgets section of the dashboard provides you with practical access to specific environment information for your day-to-day operations. Click the image to view full size.



This section is comprised of the following widgets:

- Top servers by alert count
- Top servers by response time
- Top databases by alerts
- Top alert categories

## Top servers by alert count

The Top servers by alert count widget lists the instances with the highest number of alerts in descending order. This widget displays the following information:

- Instance name
- Alert count

If you click any instance name of a row, it displays the Databases tab of the [single instance dashboard](#).

## Top servers by response time

The Top servers by response time widget lists the instances with the highest response time in descending order. This widget displays the following information:

- Instance name
- Response time in milliseconds (ms)

If you click any instance name of a row, it displays the Sessions tab of the [single instance dashboard](#).

## Top databases by alerts

The Top databases by alerts widget lists the instances that contain the databases with the highest number of alerts in descending order. This widget displays the following information:

- Database name
- Number of alerts

If you click any database name of a row, it displays the Databases tab of the [single instance dashboard](#).

## Top alert categories

The Top alert categories widget lists the category with the largest number of alerts and displays the following information:

- Category name
- Number of alerts

Alert categories include:

- Custom
- Databases
- Logs
- Operational
- Queries
- Resources
- Services
- Sessions
- Virtualization

If you click any category name, it displays the [Alerts Detail](#) screen.

**SQL Diagnostic Manager for SQL Server** performance monitoring, alerting, and diagnostics for SQL Server.

**IDERA | [Products](#) | [Purchase](#) | [Support](#) | [Community](#) | [Resources](#) | [About Us](#) | [Legal](#)**