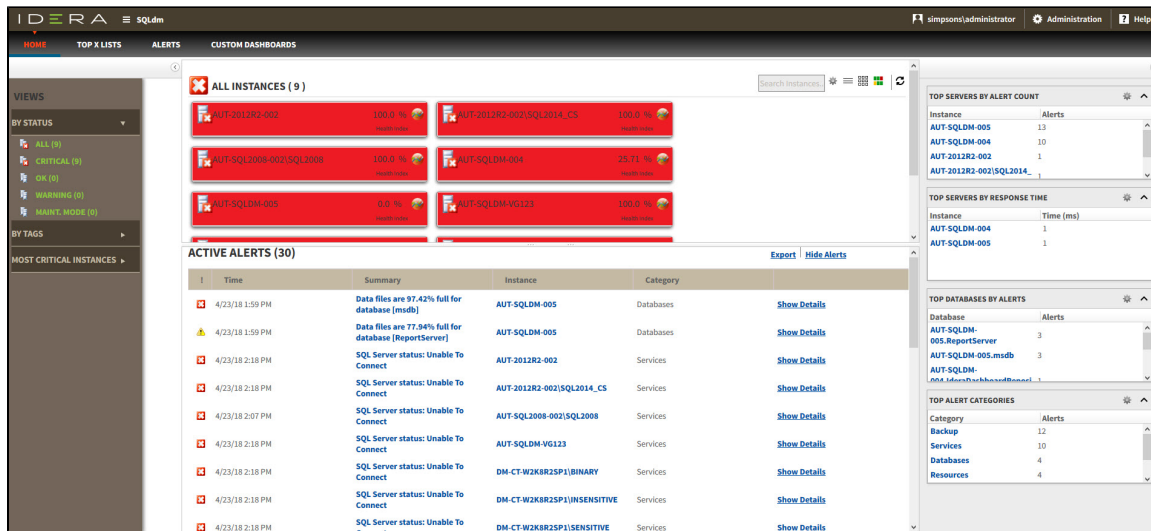


# Navigate the web console dashboard

The SQLDM web console interface boasts an easy-to-navigate dashboard comprised of several views, sub-views, tabs, and widgets that provide a complete synopsis of your SQL Diagnostic Manager environment. Click the image to view full size.



On the dashboard you can find the following sections:


- Views by Status, Tags, or Critical Instances
- List, thumbnail and heatmap sub-views
- Active alerts roll up view
- Top servers by alert count and response time widgets
- Top databases by alerts
- Top alert categories
- Top X Lists tab
- Alerts tab
- Custom Dashboards tab

## Additional options

### Search

In the SQL Diagnostic Manager web console dashboard, you can search for a particular instance by name. Use the percent (%) wildcard character if you do not remember the full name of the instance that you are looking for.

### Heatmap Calculation Configuration

The  icon, located next to the search instances option, allows you to configure the scale factors to calculate the health index displayed in the heatmap.

### Group by

In the SQL Diagnostic Manager web console dashboard, you can group returned information from the different views by SQLDM Repository.

### Refresh

The Refresh button allows you to manually refresh displayed data.

### Collapse side panels

In the SQL Diagnostic Manager web console dashboard, you can collapse either or both side panels to use all available screen space for the center panel.

**SQL Diagnostic Manager for SQL Server** performance monitoring, alerting, and diagnostics for SQL Server.

**IDERA | Products | Purchase | Support | Community | Resources | About Us | Legal**