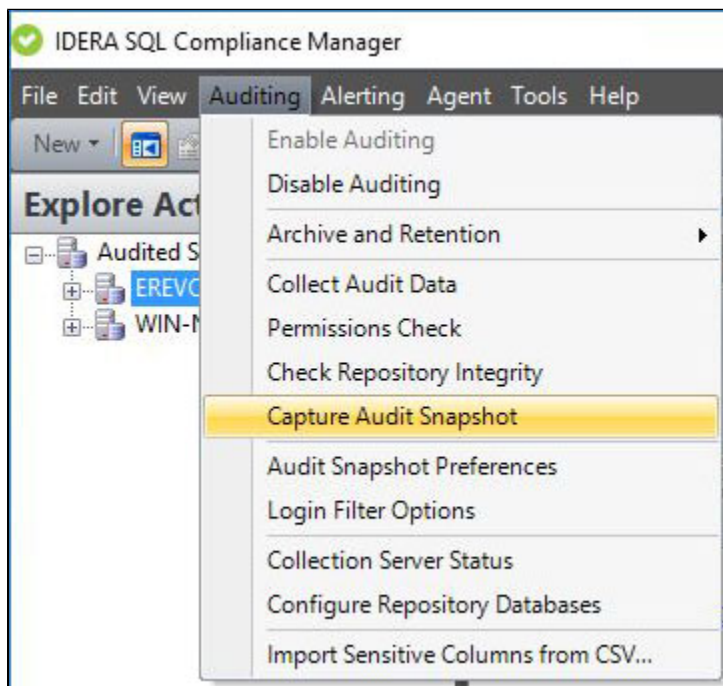


Capture Audit Snapshot window

The Capture Audit Snapshot window allows you to manually capture an audit snapshot for all registered SQL Server instances or a specific instance. This option provides on-demand configuration data for auditing diagnostics. Audit snapshots include current audit settings for the registered SQL Server instances and audited databases. Captured snapshots are listed on the **Change Log** tab.



Select the type of audit snapshot you want to capture, and then click **OK**.

If you want to capture audit snapshots on a routine basis, consider scheduling snapshots.

