

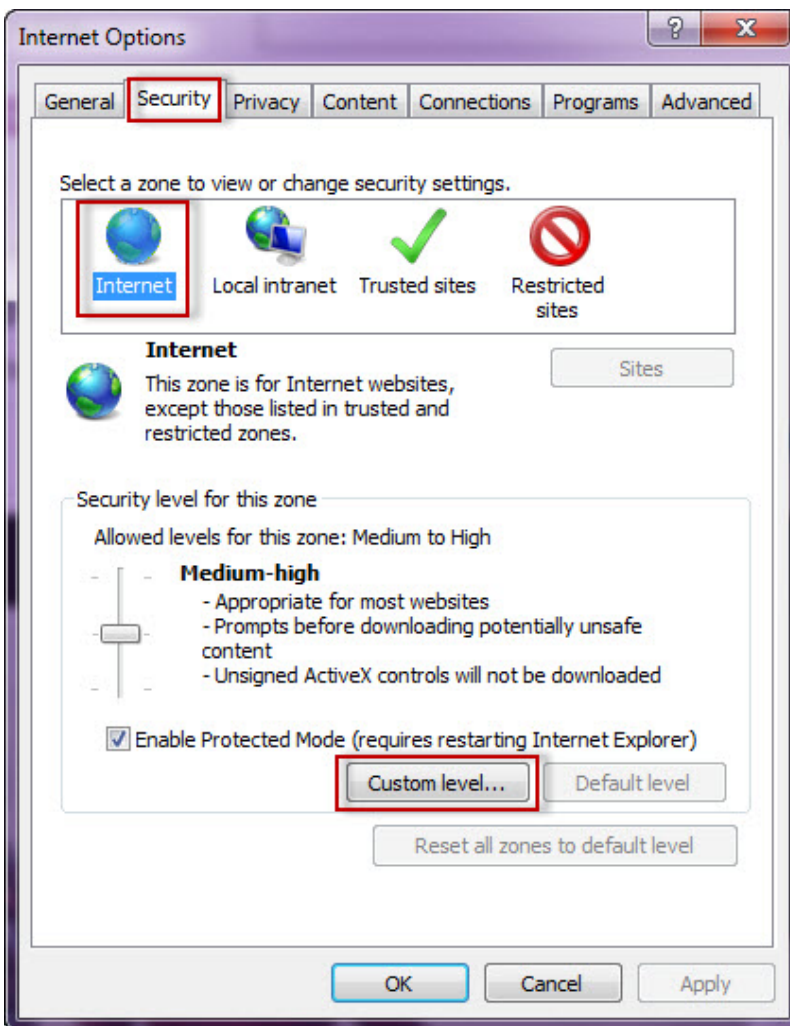
Configuring your browser for Windows Authentication

In order to be able to use Windows Authentication to log into SQL Safe, you have to configure your browser settings.

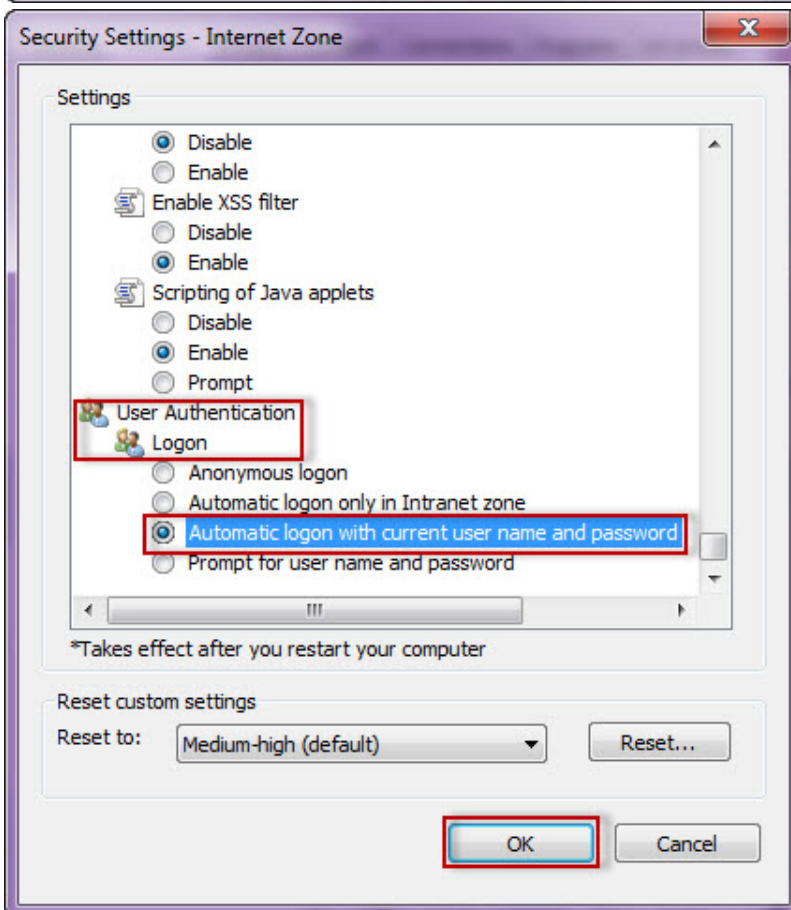
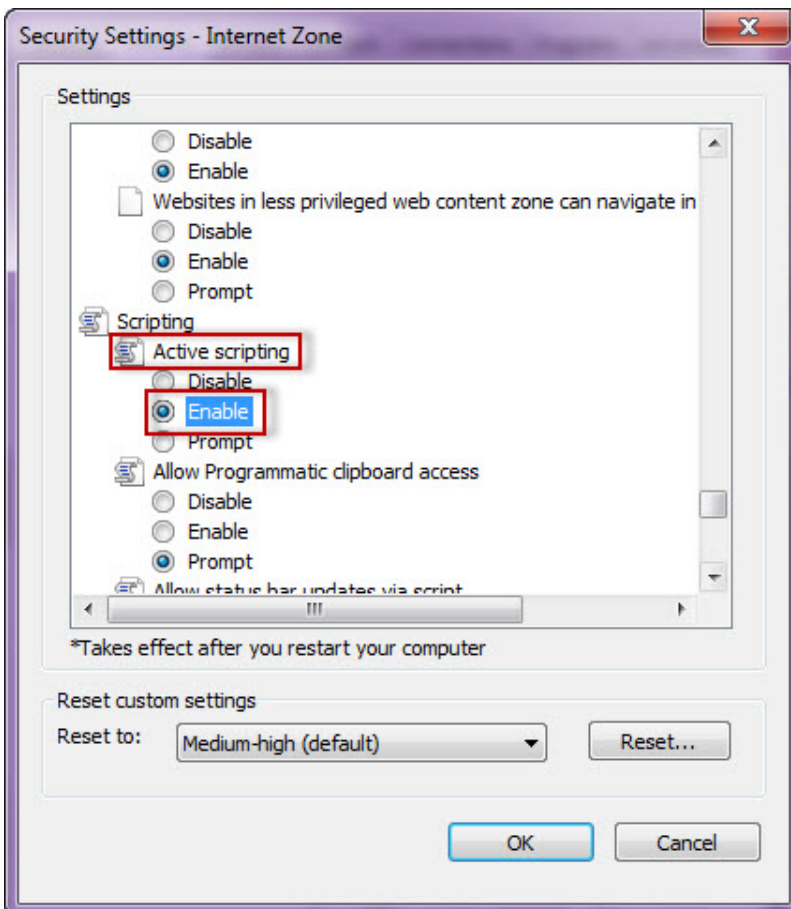
Internet Explorer 9,10,11

To configure these versions of **Internet Explorer**, follow these steps:

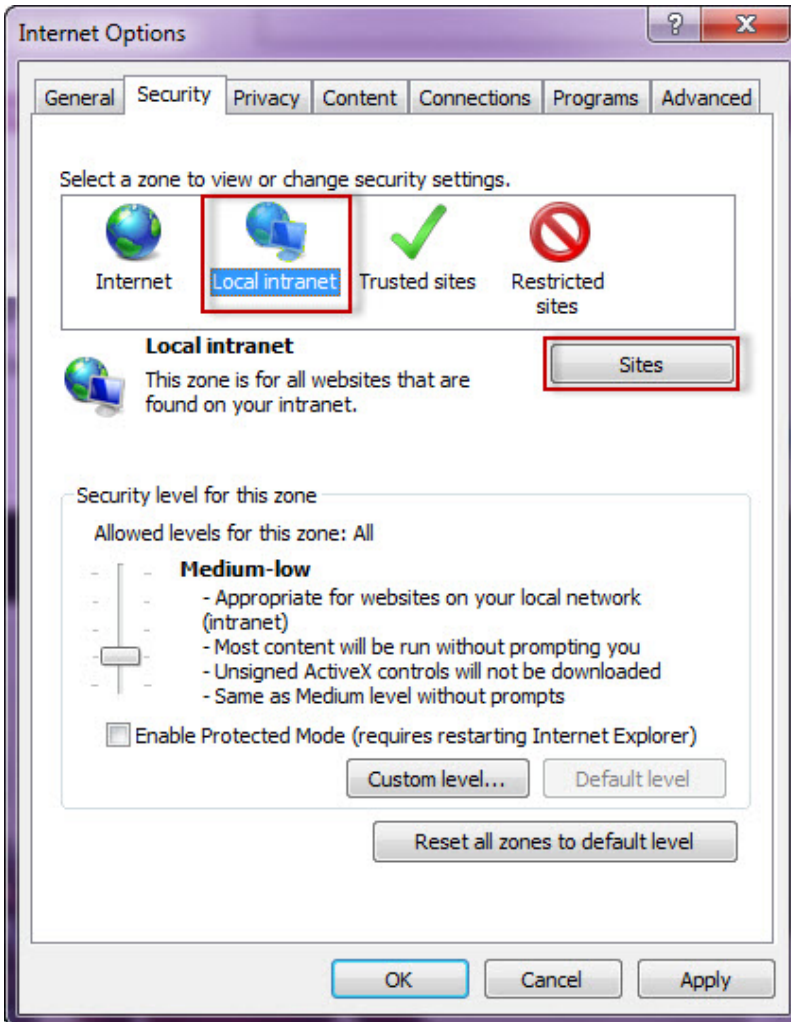
1. Go to **Internet Options**.
2. Click **Security**.
3. Click **Internet** and then **Custom Level**.



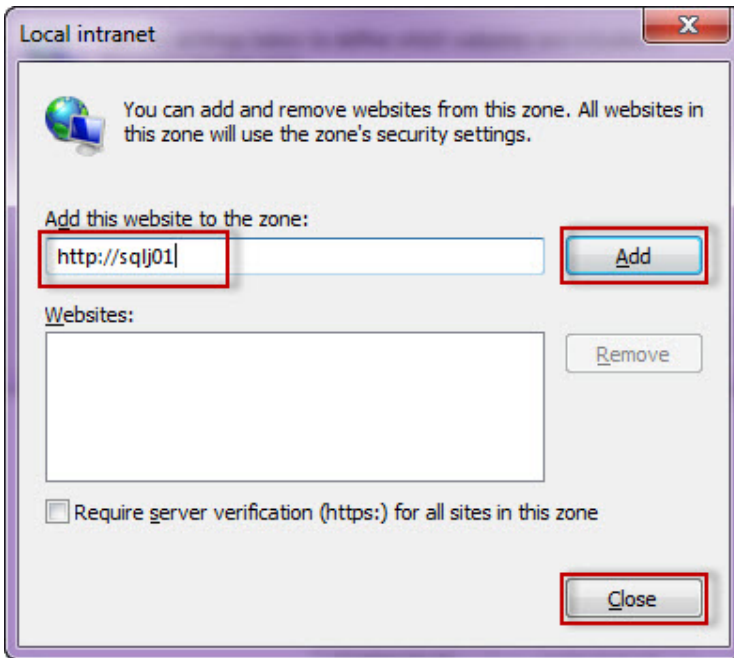
4. Go to Scripting/Active scripting and make sure **Enable** is selected.
5. Then go to User Authentication/Logon and make sure **Automatic logon with current user name and password** is selected.
6. Click **OK**.



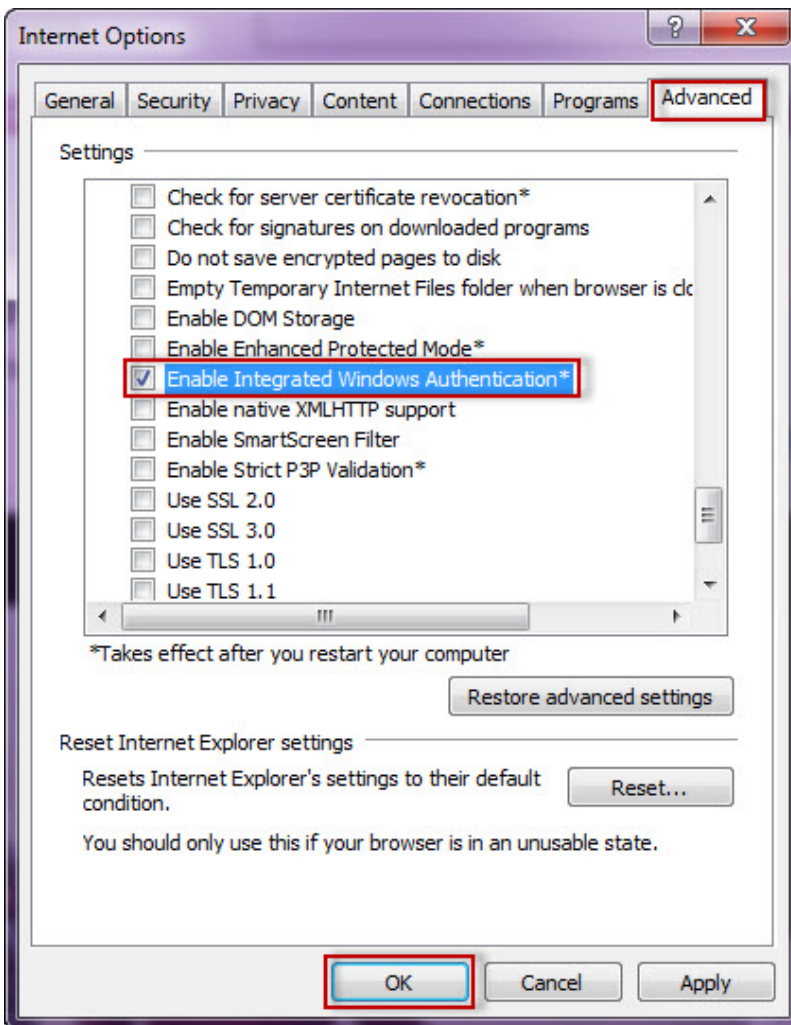
7. Click **Local intranet** and then **Sites**.



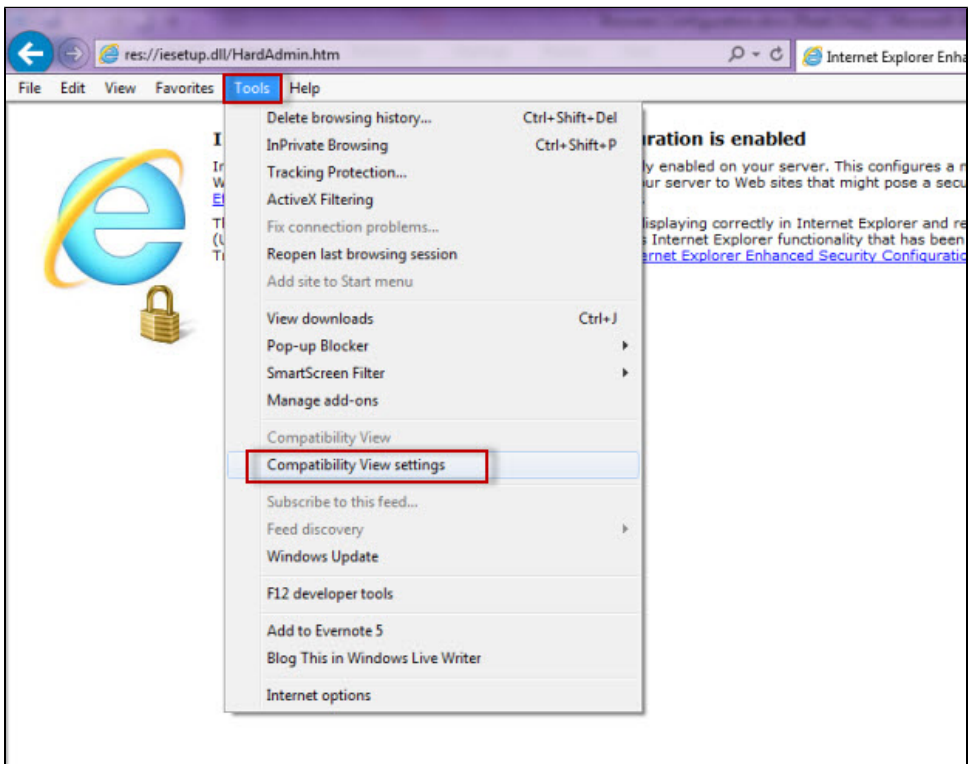
8. Type the following site **http://sqlj01** and click **Add**.
9. Click **Close**.



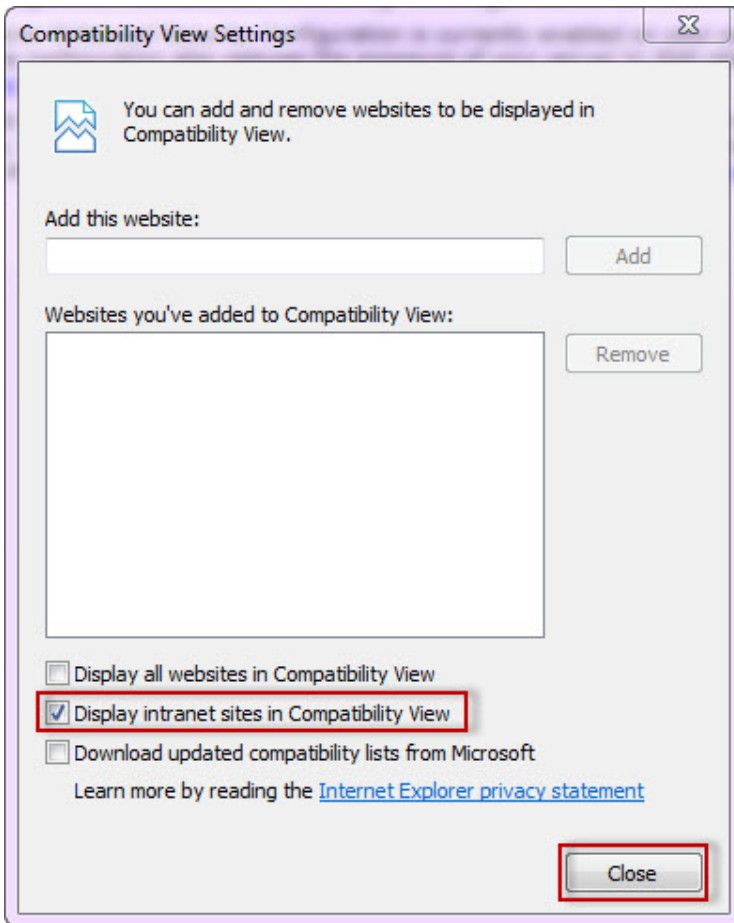
10. Go to **Advanced** and make sure **Enable Integrated Windows Authentication** is selected.
11. Click **OK**.



12. Go to **Tools** in the menu bar, and select **Compatibility View Settings**.



13. In the **Compatibility View Settings** window, make sure **Display intranet sites in Compatibility View** is selected.
14. Click **Close**.

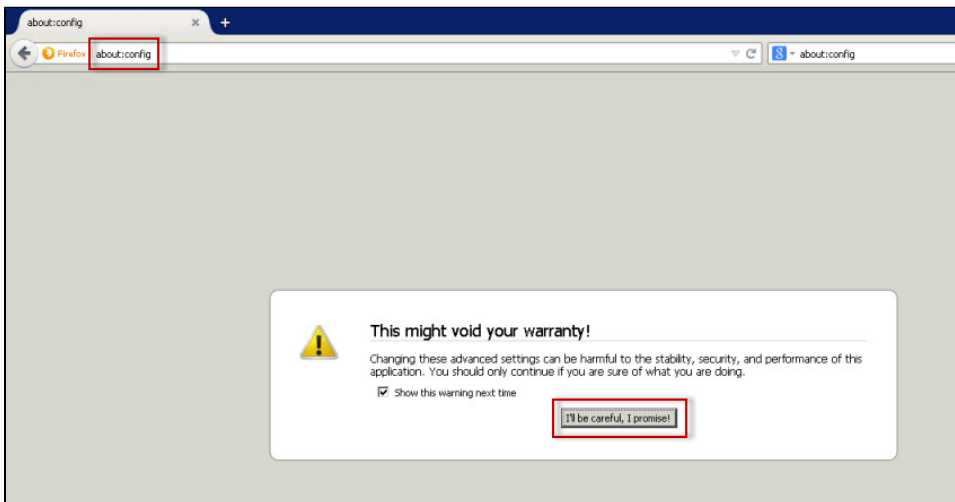


Configuring Google Chrome and Mozilla Firefox

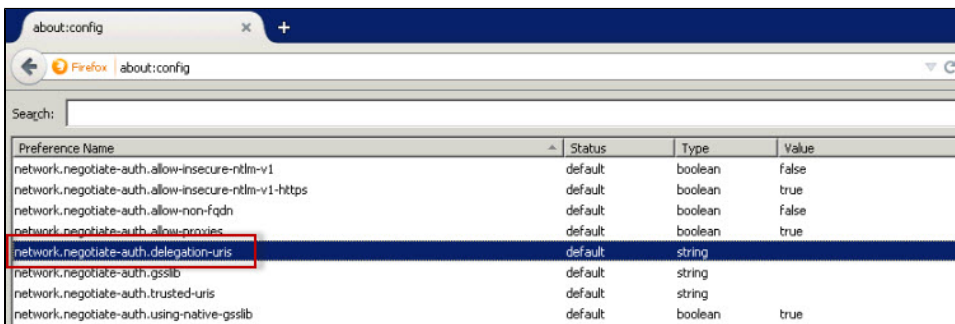
To configure **Google Chrome**, you can go to the following link: <http://dev.chromium.org/developers/design-documents/http-authentication>.

To configure **Mozilla Firefox**, view the following steps:

1. Open your Mozilla Firefox browser and type **about:config**.
2. Click **I'll be careful, I promise!**.



3. Search and double click **network.negotiate-auth.delegation-uris**.



4. Type `https://localhost:9291`. Click **OK**.
5. Search **network.automatic-ntlm-auth.trusted-uris**, double-click and type the same value as before: `https://localhost:9291`. Click **OK**.

Close all instances of the Firefox browser to make the changes effective. Launch the browser again and access the application.

SQL Safe is a high-performance backup and recovery solution for your SQL Servers. [Learn more >>](#)

IDERA Website	Products	Purchase	Support	Community	About Us	Resources	Legal
-------------------------------	--------------------------	--------------------------	-------------------------	---------------------------	--------------------------	---------------------------	-----------------------