

Installing SQL Inventory Manager

This section guides you through the installation of IDERA SQL Inventory Manager. You can install IDERA SQL Inventory Manager on any computer that meets or exceeds the [product requirements](#).

Before you install IDERA SQL Inventory Manager, be sure to have:

- The [IDERA Dashboard](#) installed. IDERA SQL Inventory Manager integrates with the IDERA Dashboard.
- A local administrator account on the machine you are installing the product.
- A host machine for SQL Inventory Manager services.
- A host SQL Server for the product databases.
- A service account with permissions to read/write and create databases and update their schemas.

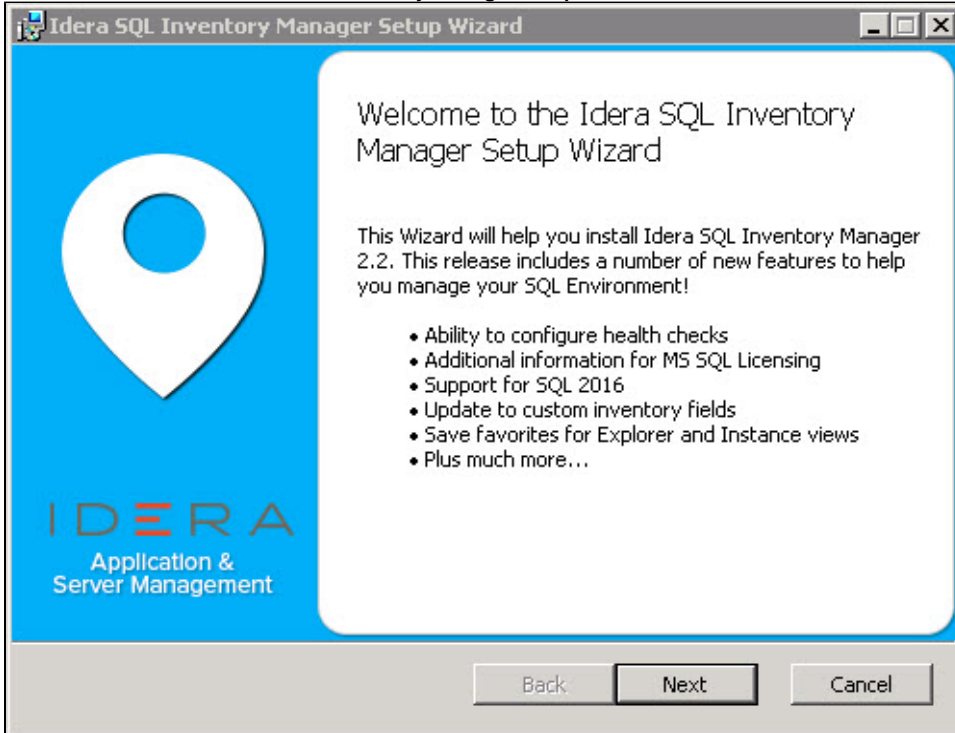


You can also grant IDERA SQL Inventory Manager Product Administrator permissions in the IDERA Dashboard. For more information, see [Managing users in the IDERA Dashboard](#).

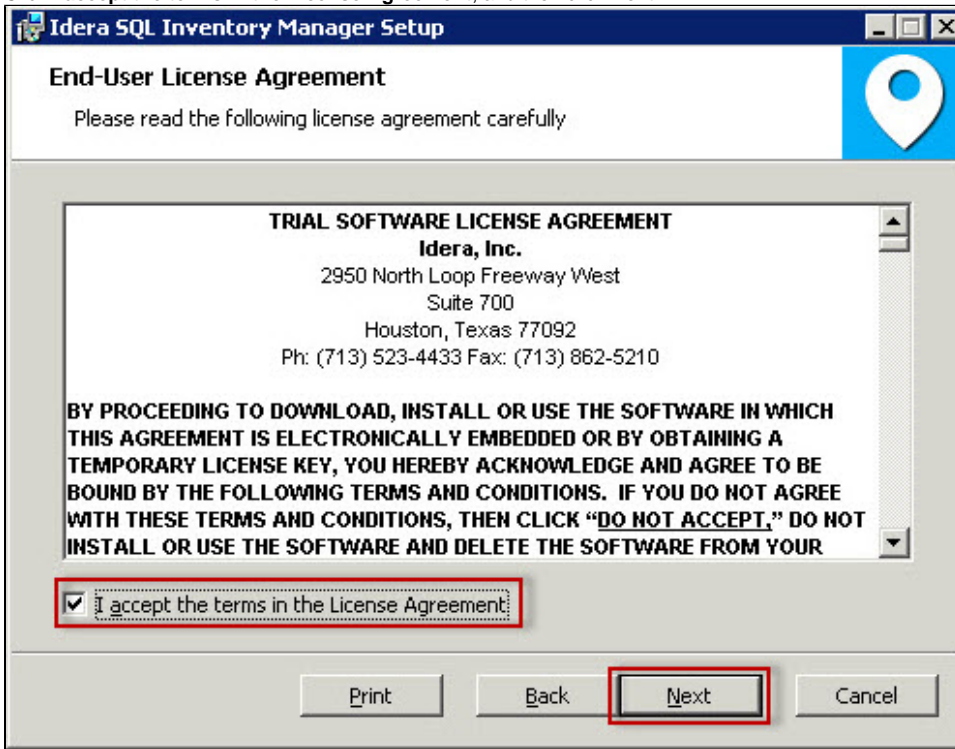
Installing IDERA SQL Inventory Manager

Before you install IDERA SQL Inventory Manager, be sure to meet the requirements mentioned before. Open the installer and follow these steps:

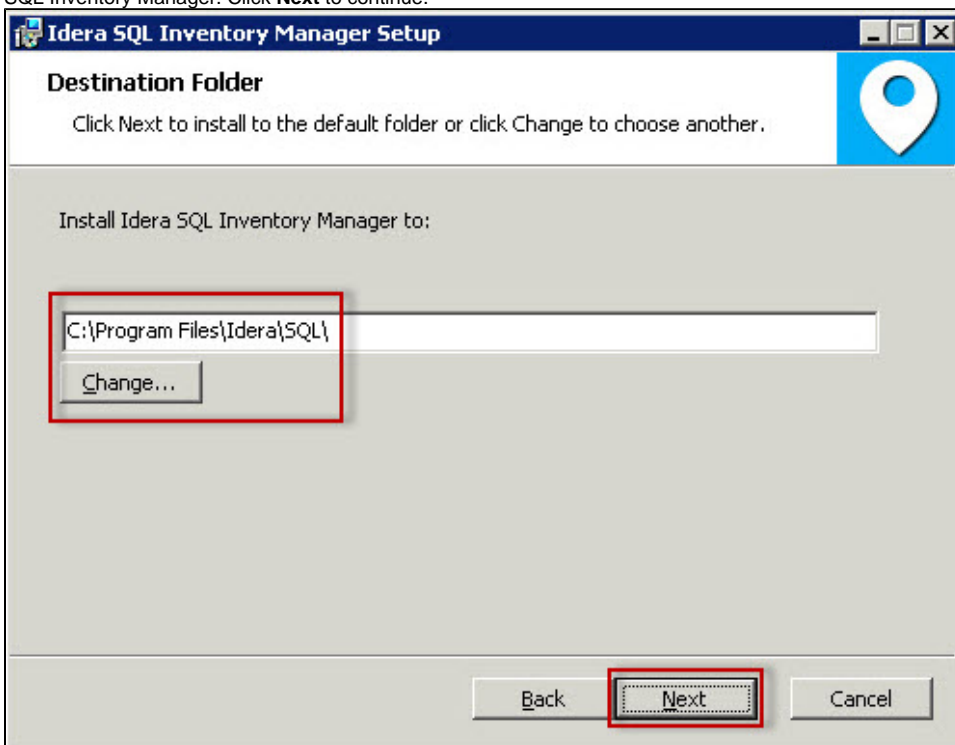
1. On the **Welcome to the IDERA SQL Inventory Manager Setup Wizard**, click **Next** to continue with installation.



2. Click **I accept the terms in the License Agreement**, and then click **Next**.

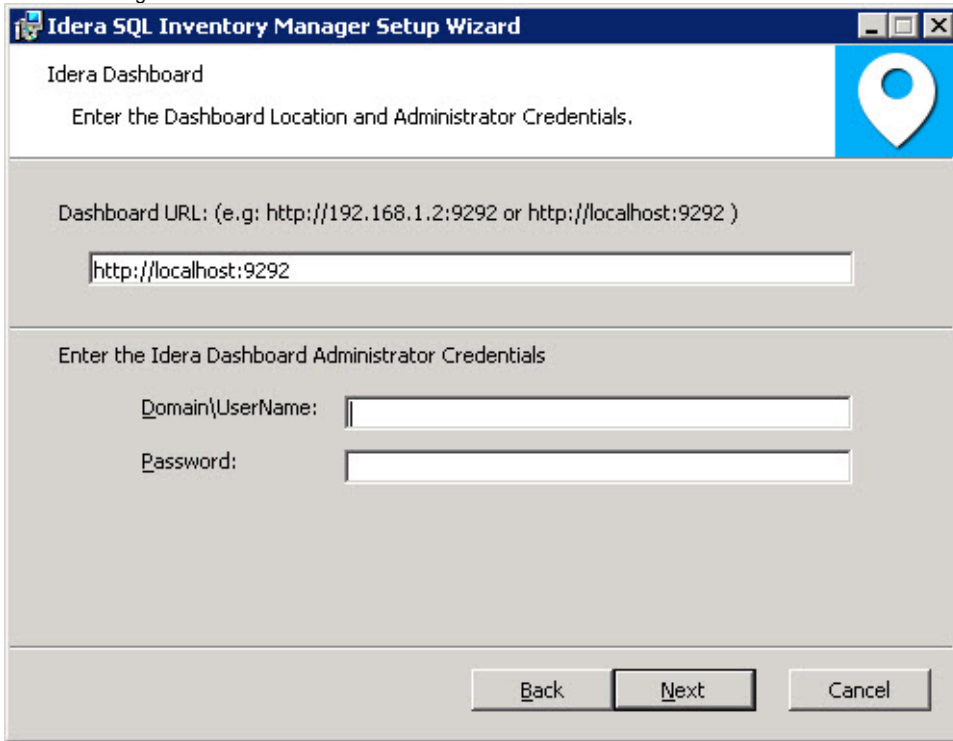


3. On the Destination Folder page, click **Next** to install to the default folder or click **Change** to select the directory where you want to install IDERA SQL Inventory Manager. Click **Next** to continue.



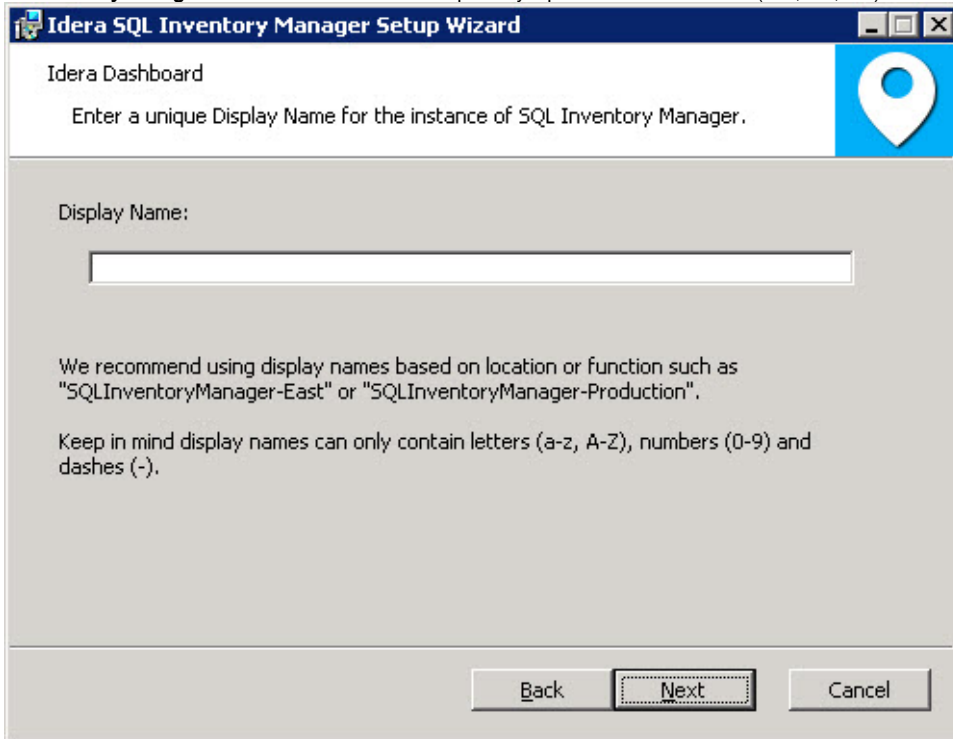
4. On the IDERA Dashboard location and credentials page, specify:
- the URL of the IDERA Dashboard
 - the IDERA Dashboard Administrator User Name
 - the IDERA Dashboard Administrator user account Password

Use the format <Domain Name>\<User Name> when typing the administrator credentials. IDERA SQL Inventory Manager uses this account when accessing the IDERA Dashboard to share data.



The screenshot shows the 'Idera SQL Inventory Manager Setup Wizard' window. The title bar includes the IDERA logo and the text 'Idera SQL Inventory Manager Setup Wizard'. The window has a standard Windows-style title bar with minimize, maximize, and close buttons. The main content area is divided into two sections. The top section is titled 'Idera Dashboard' and contains the instruction 'Enter the Dashboard Location and Administrator Credentials.' followed by a text input field for the 'Dashboard URL: (e.g: http://192.168.1.2:9292 or http://localhost:9292)'. The input field contains the text 'http://localhost:9292'. The bottom section is titled 'Enter the Idera Dashboard Administrator Credentials' and contains two text input fields: 'Domain\UserName:' and 'Password:'. At the bottom of the window, there are three buttons: 'Back', 'Next', and 'Cancel'.

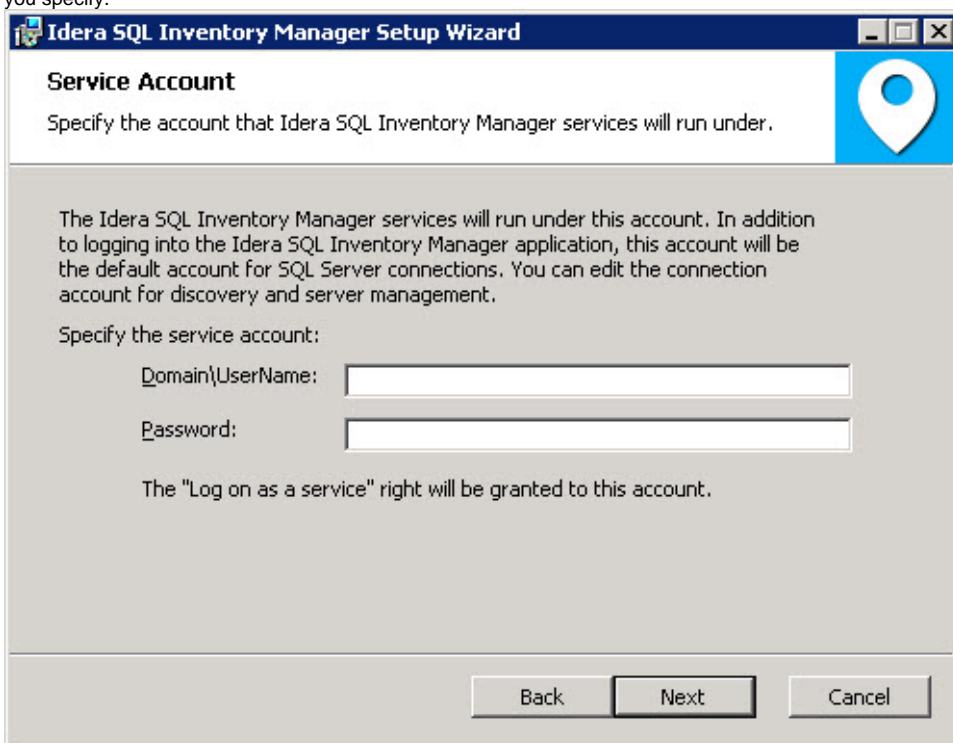
5. Click **Next** to continue.
6. On the IDERA Dashboard Display Name page, type a unique name for this instance of IDERA SQL Inventory Manager, and then click **Next**. This page allows you to identify each instance of IDERA SQL Inventory Manager or other IDERA products when you have more than one installation of the same product. IDERA recommends that you use a name based on a location or function, such as **SQLInventoryManager-Production** or **SQLInventoryManager-US**. Note that this field accepts only alphanumeric characters (A-Z, a-z, 0-9) and dashes (-).



The screenshot shows the 'Idera SQL Inventory Manager Setup Wizard' window. The title bar includes the IDERA logo and the text 'Idera SQL Inventory Manager Setup Wizard'. The window has a standard Windows-style title bar with minimize, maximize, and close buttons. The main content area is divided into two sections. The top section is titled 'Idera Dashboard' and contains the instruction 'Enter a unique Display Name for the instance of SQL Inventory Manager.' followed by a text input field for the 'Display Name:'. The input field is empty. The bottom section contains a paragraph of text: 'We recommend using display names based on location or function such as "SQLInventoryManager-East" or "SQLInventoryManager-Production".' followed by another paragraph: 'Keep in mind display names can only contain letters (a-z, A-Z), numbers (0-9) and dashes (-)'. At the bottom of the window, there are three buttons: 'Back', 'Next', and 'Cancel'.

7. On the IDERA SQL Inventory Manager Service Account page, specify the **User Name** and **Password**, under which the services will run, and then click **Next**. Use the format <Domain Name>\<User Name> when typing the User Name. IDERA SQL Inventory Manager uses this account to

connect, discover, and gather configuration information from SQL Servers. The installer grants the "Log on as a Service" right to the account that you specify.

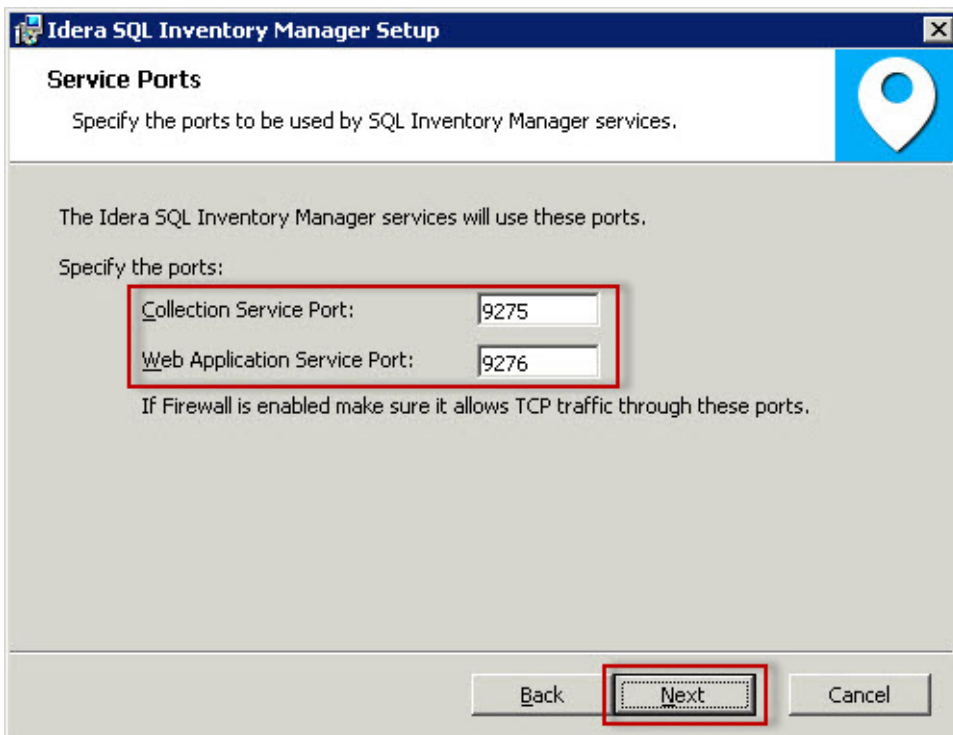


8. On the Service Ports section, determine which ports you want to use for the IDERA SQL Inventory Manager Collection Service and for the Web Application Service. You must verify that the Firewall allows TCP (Transmission Control Protocol) traffic through your specified ports. By default, IDERA SQL Inventory Manager uses ports 9275 and 9276 for the Collection and Web Application services respectively. Click **Next**.



Port values should be between 1 and 65535.

Keep in mind, that browsers may block some specific ports. To check a list of all blocked ports on Mozilla Firefox, see [Mozilla Port Blocking](#).



9. On the IDERA SQL Inventory Manager Repository Database page, specify the host SQL Server instance where IDERA SQL Inventory Manager will create the Inventory Manager and Core databases and type their respective names. These databases store collected data, alert information, and alert configuration settings.

By default, the setup program uses your Windows logon account to create the Repository databases, but you can also choose to use Microsoft SQL Server connection credentials by checking the option **Use Microsoft SQL Server Authentication**. When you choose this option, a new window automatically opens, type the respective SQL Server login and password. The user who installs IDERA SQL Inventory Manager has access to the product. If you need other users to have access to IDERA SQL Inventory Manager, you can grant them access from inside the product after the installation is complete. Click **Next**.

Idera SQL Inventory Manager Setup

Repository Databases

Specify the name and location of the SQL Inventory Manager repository da...

Specify the host SQL Server and the name of the Repository databases.

SQL Server Instance: (local)

Inventory Manager Databa... IderaInventoryManagerRepository

Core Database Name: IderaCoreRepository

Connection Credentials:

By default, the setup program uses the credentials of your Windows logon account to create the Repository databases.

☐ Use Microsoft SQL Server Authentication Change...

Back Next Cancel

10. On the next section, click **Install** if you are ready to start the installation. If you want to review or change any of your installation settings, click **Back**

Idera SQL Inventory Manager Setup Wizard

Ready to install Idera SQL Inventory Manager

Setup will grant these accounts access to Idera SQL Inventory Manager.

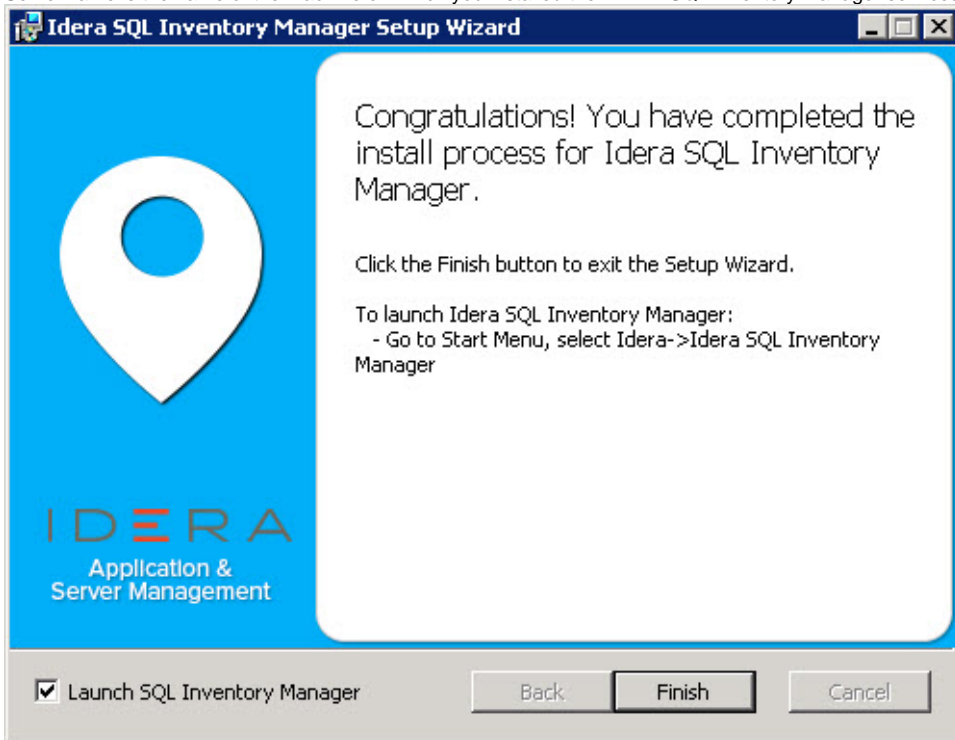
Idera SQL Inventory Manager Service Account: simpsons\\administrator.

Idera Dashboard Account: simpsons\\administrator.

Use these accounts to log into Idera SQL Inventory Manager. You can grant other users access from the Idera Dashboard Administration tab.

Back Install Cancel

11. After the installation is complete, click **Finish**. You can check the box for launching IDERA SQL Inventory Manager immediately after installation. Alternatively, you can access IDERA SQL Inventory Manager web application through the following link: <http://<ServerName>:9276> where ServerName is the name of the machine on which you installed the IDERA SQL Inventory Manager services.



When IDERA SQL Inventory Manager launches on your browser, you should use your Windows user account with your respective password to log in to the product. Please take into account that IDERA SQL Inventory Manager does not store passwords.

SQL Inventory Manager lets you discover and visualize your SQL Server environment. [Learn more > >](#)

IDERA Website	Products	Purchase	Support	Community	About Us	Resources	Legal
-------------------------------	--------------------------	--------------------------	-------------------------	---------------------------	--------------------------	---------------------------	-----------------------