

# Precise 10.0.0 Release Information

Precise Application Performance Platform 10.0.x

I D  R A

## Table of Contents

<b>Introduction to Precise 10.0.0</b> .....	<b>4</b>
Introducing Precise 10.0.0 .....	4
Installing Precise 10.0.0 .....	4
<b>New Features and Enhancements for Precise 10.0.0</b> .....	<b>5</b>
Supported monitoring platforms.....	5
Improved user interface .....	5
Improved TLS support .....	5
Adds Always On support .....	5
Adds new In-Memory metrics .....	5
Removed .NET 2.0 requirement .....	5
Updated Precise for SQL Server driver requirements.....	5
<b>Resolved Issues</b> .....	<b>6</b>
<b>Known Issues</b> .....	<b>7</b>
<b>Precise new user interface</b> .....	<b>8</b>
Known issues with the new GUI .....	8
<b>Monitoring SQL Server instances with TLS 1.2 enabled (Precise 10.0.x)</b> .....	<b>9</b>
Prerequisites .....	9
<b>Monitoring SQL Server instances in Always On</b> .....	<b>10</b>
Always On - Dashboard tab .....	10
Always On - Activity tab .....	11
Activity tab - Associate.....	13
Activity tab - Instance and Database context.....	14
Activity tab - Availability Group context .....	17
Activity tab - Availability Replica context .....	20
Always On - Objects tab .....	24
<b>Oracle 12c additional metrics</b> .....	<b>31</b>
Statistics tab.....	31
Objects tab .....	31
In-Memory flag for objects.....	31

In-Memory information for columns of an object .....	32
In-Memory usage graph.....	32
In-Memory Access Type .....	32
Init parameters related to In-Memory Area support.....	33
Undo tablespaces for each PDB .....	33
In-Memory for tablespaces.....	34
In-Memory details for the tables .....	34

# Introduction to Precise 10.0.0

## Introducing Precise 10.0.0

Precise 10.0.0 is a complete Precise version, which includes and provides enhancements and fixes for Precise version 9.9.x. This document describes the new features introduced, the technologies supported, and the issues resolved by this version.

## Installing Precise 10.0.0

Precise 10.0 can be installed in the following ways, depending on the currently installed Precise version:

- If this is the first time you are installing Precise, install Precise 10.0 as described in [Clean installation of the Precise Framework](#).
- If Precise version 9.9.x is currently installed, upgrade directly to version 10.0 as described in [Upgrading Precise](#).

## New Features and Enhancements for Precise 10.0.0

### Supported monitoring platforms

Support is added for the following monitoring platforms:

- IIS 10.0
- SAP ECC 6 EHP 8
- .NET 4.62 and .NET 4.7

### Improved user interface

Precise 10.0 extends the new user interface based on modern UI technologies to the Applications side of Precise. For more information about these updates, see [Precise new user interface](#).

### Improved TLS support

This release includes the following improvements to TLS support:

- Allows users to monitor SQL Server instances with TLS 1.2 without requiring enablement of FIPS
- Allows you to use TLS 1.2-enabled instances as the PMDB database

For more information about TLS support, see [Monitoring SQL Server instances with TLS 1.2 enabled \(Precise 10.0.x\)](#).

### Adds Always On support

Users now can monitor SQL Server instances configured in an Always On environment. For more information about this feature, see [Monitoring SQL Server instances in Always On](#).

### Adds new In-Memory metrics

This release includes additional metrics related to In-Memory capability when monitoring Oracle 12.2 databases. For more information about this feature, see [Oracle 12c additional metrics](#).

### Removed .NET 2.0 requirement

This release does not require Microsoft .NET 2.0 on the machine where you run the Precise installer.

### Updated Precise for SQL Server driver requirements

Precise for SQL Server now uses the SQL Server Native Client 11.0 driver by default. This is an update from previous versions that required legacy SQL Server and OLEDB drivers.

This change now requires the SQL Server Native Client 11.0 driver be available on the following machines:

- servers from which SQL Server instances are monitored
- the machine from where the framework installation is run
- machines on which Precise focal point, PMDB focal point, and Precise for SQL Server focal points are installed

## Resolved Issues

- Support file creation using new Admin Point GUI creates invalid archive (PRECISE-19035)
- Precise for Oracle Current tab Locks data does not appear (PRECISE-19046)
- psdn\_ba\_WIN.zip is considered potential malware (PRECISE-19053)
- Incorrect Oracle container name appears in Application dashboard and Activity tab for Oracle 12.2.0.1.0 (PRECISE-19055)
- Running the manual schema script is asking for additional parameters in Precise FW installation with manual schema creation (PRECISE-19057)
- Oracle event mapping change (PRECISE-19065)
- Some of the required files for listener/instance installation in HP UX machine are missing in Precise 9.9.0 build. (PRECISE-19069)
- Precise Manual Schema Installation Error. (PRECISE-18985)
- Precise for Oracle - Container name captured as NA when container number is not continuous on a monitored instance. (PRECISE-19044)
- AIX OS agent fails due to missing binaries. (PRECISE-19045)
- Load Processes showing GMT time on new Admin Point GUI. (PRECISE-19036)
- Running the manual schema script is asking for additional parameter in Precise FW installation with manual schema creation. (PRECISE-19057)

## Known Issues

### **Precise 10.0.0 GUI Issues**

Issues specific to the Precise 10.0.0 GUI are available in [Precise new user interface](#).

- You must restart the Precise Focal Point after an upgrade if using remote instances. You also must start the SQL agents after the Focal Point restart.
- When an Oracle monitoring instance is created immediately after framework installation, errors occasionally occur in Oracle warehouse processes, available at **Adminpoint > Warehouse Processes**. If you see such errors, restart the Oracle Focal Point and PMDB focal point.
- After a fresh install or upgrade, you must restart the Precise GUI service before using the Custom Portal.
- There is an issue with injdn.dll and injdn\_x64.dll on Windows Server 2008 R2 with .NET monitoring. When a .NET instance is installed on Windows Server 2008 R2, a “Bad Image” error may occur. You can resolve this issue by installing a Windows security update on the machine. You can download the update from <http://technet.microsoft.com/en-us/library/security/3033929.aspx>.
- Some binaries from the Precise 10.0.0 installer show up as a threat under AVG antivirus. This is a false positive with AVG and does not cause any problems. You may have to whitelist these binaries when using AVG as antivirus.

## Precise new user interface

Precise 10.0 introduces a new graphical user interface based on a more modern web framework. This new UI works with most browsers and does not rely on Flash or ActiveX.

The new Precise 10.0 user interface co-exists with your existing interface and is available at:

`http://<hostname>:<port>/precise`

This new UI is fully supported on Chrome and Firefox web browsers. Internet Explorer and Edge browser use is supported but do experience some known issues and limitations.

### **Using Report Manager**

Report Manager users still must use the original Precise GUI based on Internet Explorer.

## Known issues with the new GUI

- When logging into the application, the left Apptiers graph is not expanded for the first application by default, and clicking on the row does not expand it. As a workaround, click one of the other rows, and then click back on the first row.
- The Favorites feature is not available.
- In the SQL tab, the Compare Plans functionality is not available.
- In the Dashboard, the Orientation graph does not appear for any technology.
- In the Database explain plan tree, the locate and stepping functions are not available. These features still are available with the previous GUI.
- In grids, the Copy to Clipboard feature is not available. This feature still is available with the previous GUI.
- In the Activity tab, the name in the heaviest transactions section is not an active link. This feature still is available with the previous GUI.
- In the Current and Objects tabs, the **Save As** button does not appear. This feature still is available with the previous GUI.
- In the left grid of the Infrastructure tab, the **Search** box is not available. This feature still is available with the previous GUI.
- In the SQL Server Current tab, the **Sessions Holding Locks** option does not display data.
- In the Active Session, selecting the Statistics tab does not display the message, "No Sessions Found." This issue does not affect functionality.
- In the Time Frame, the start data and end date do not appear.
- In the Applications, the **Settings** button does not appear. This feature still is available with the previous GUI.
- If you export a custom portlet from the new GUI, and then import it into the custom portal, the **Analyze** button to return to the Precise GUI does not take you to the specific content.
- In the J2EE tier's Activity tab, the **Search** box is not available. This feature still is available with the previous GUI.
- In the Network tier, the **Hour Group** list does not appear. This feature still is available with the previous GUI.
- In the Oracle tier's Current tab, the **Kill session** is not supported.
- In the Oracle tier's Activity tab, the **Define Extended Collection** and **Import Statements** do not appear. These features still are available with the previous GUI.
- In the Sybase tier's SQL tab, the **New**, **Open**, **Re-explain**, and **Plan** buttons do not appear. These features still are available with the previous GUI.
- In the Tuxedo tier, the **Hour Group** list and **Filter** icon do not appear. These features still are available with the previous GUI.
- In the Web tier's Activity tab, the **Filter By** button and **Search** box do not appear. These features still are available with the previous GUI.



## Monitoring SQL Server instances with TLS 1.2 enabled (Precise 10.0.x)

Precise 10.0 includes enhancements to enable monitoring of SQL Server instances using TLS 1.2 protocol without the need to enable FIPS.

### Prerequisites

The default driver SQL Server Native Client 11.0 must be installed on the monitoring instance, Precise for SQL Server Focal Point, and Precise for SQL Server PMDB machines.



#### **Monitoring TLS-Enabled Instances**

When monitoring TLS 1.2-enabled SQL Server instances, the corresponding PMDB instance also must use TLS 1.2 and vice versa.

# Monitoring SQL Server instances in Always On

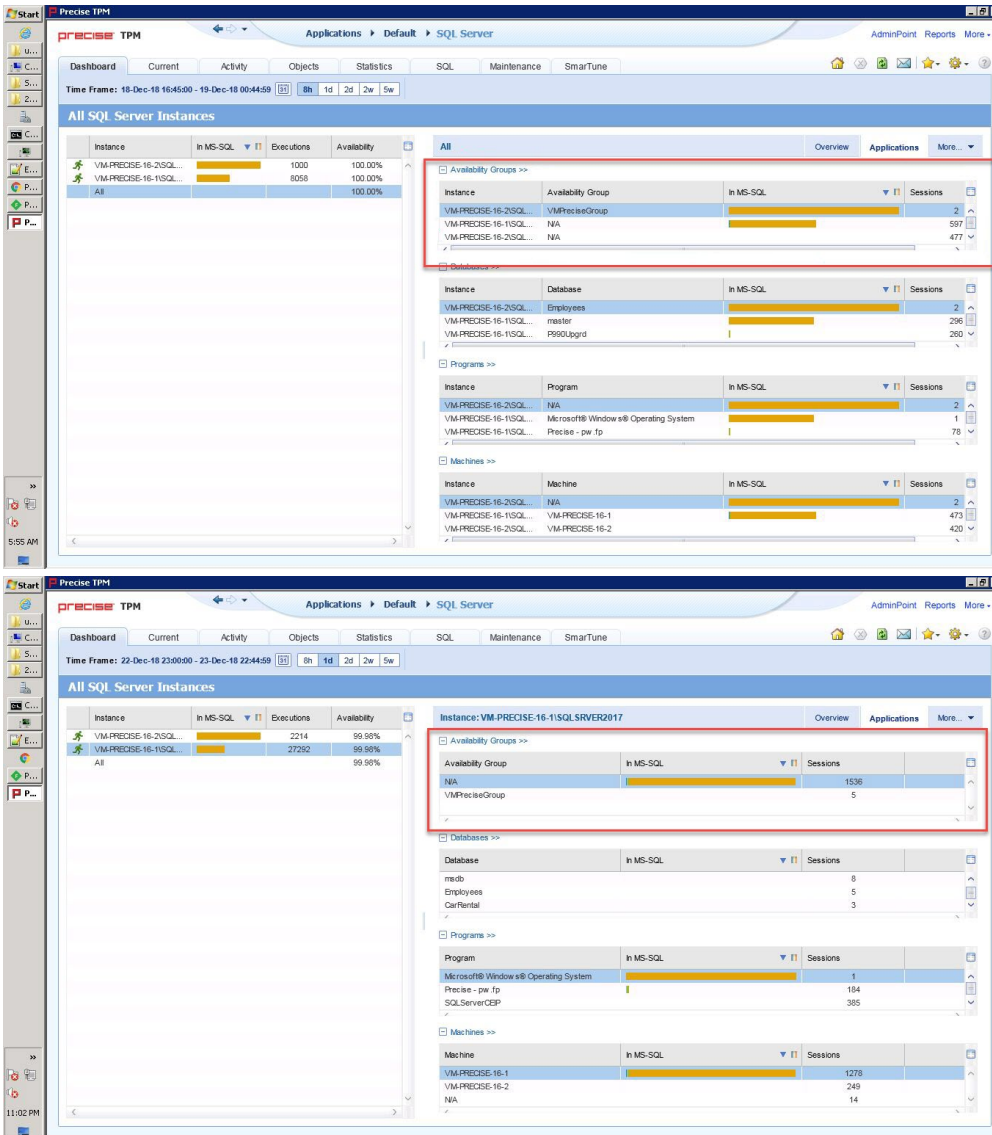
Precise 10.0 supports monitoring of SQL Server instances in an Always On configuration. This topic illustrates some of these supported features.

- [Always On - Dashboard tab](#)
- [Always On - Activity tab](#)
- [Always On - Objects tab](#)

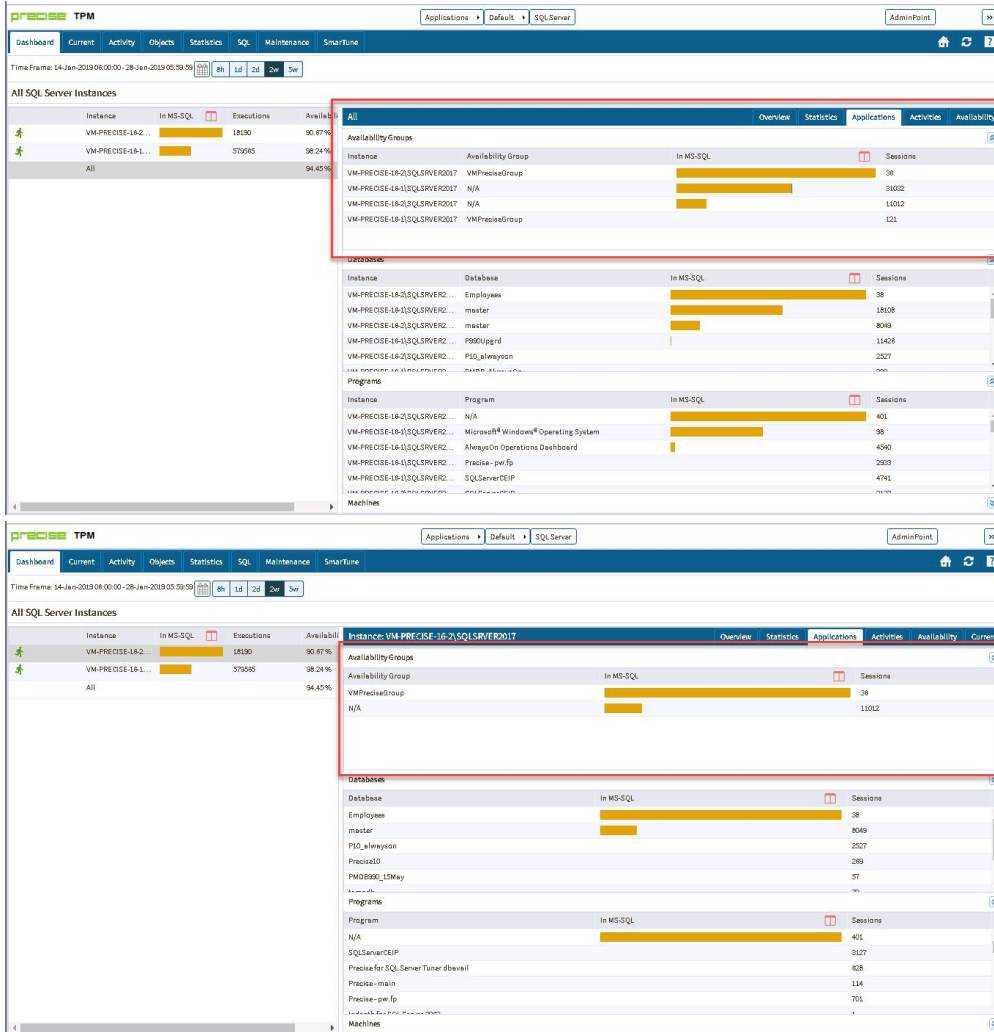
## Always On - Dashboard tab

In the Dashboard tab, the right Applications tab has a new **AlwaysOn Groups** section. This section displays the availability group name, In MS-SQL time, and number of sessions under each group. Databases which are not part of any group appear under **N/A**.

### Previous Precise versions



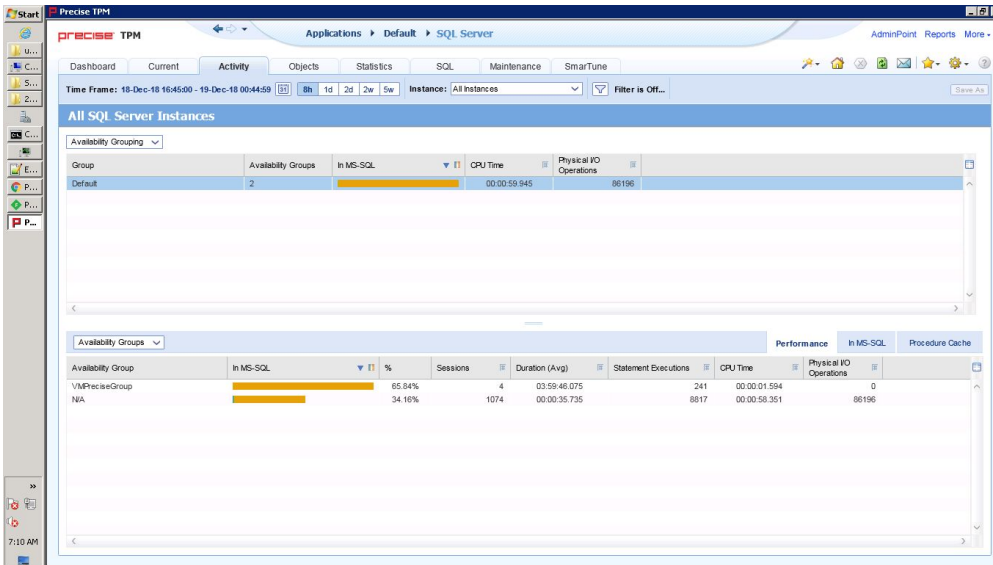
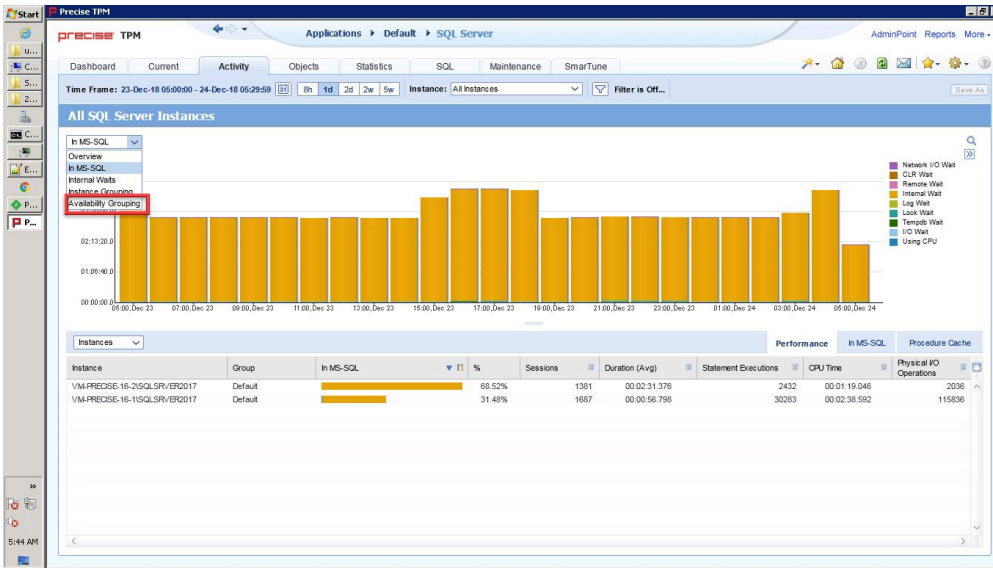
## Precise 10.0



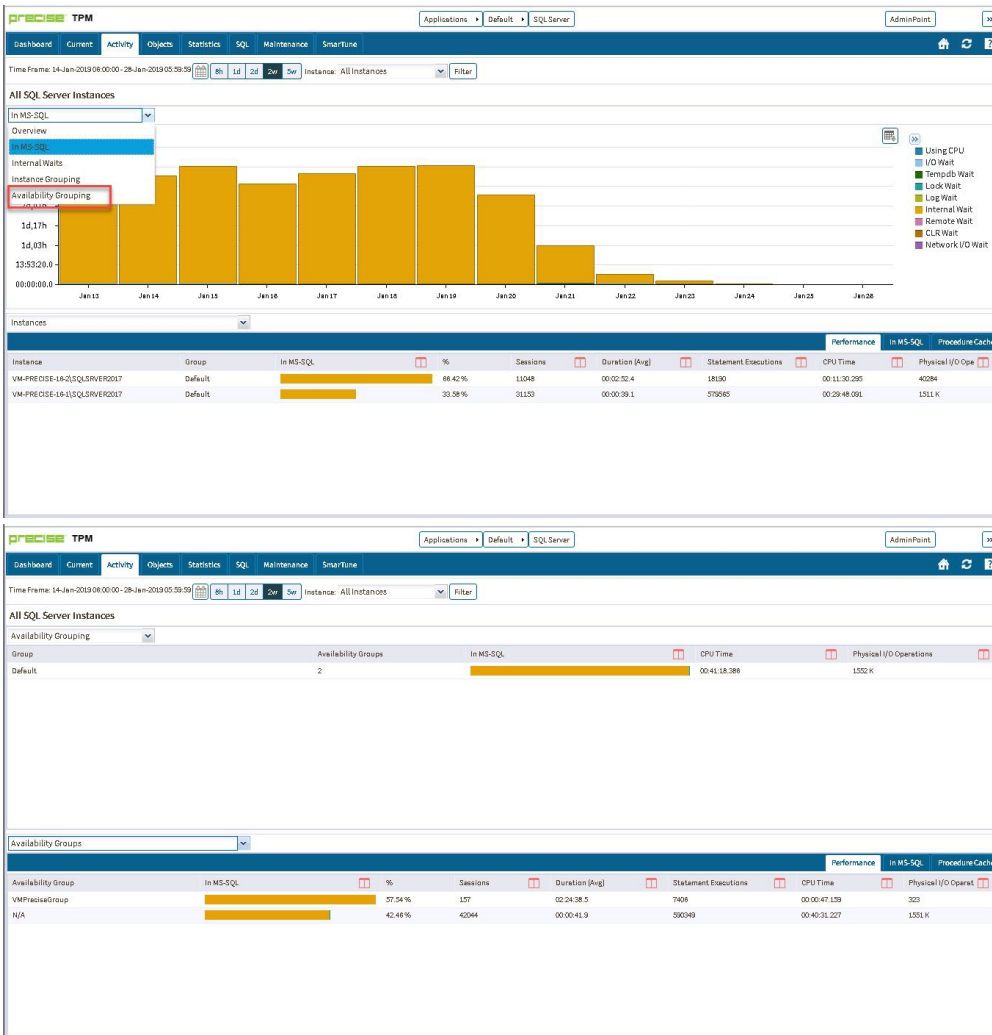
## Always On - Activity tab

In the Activity tab, at app tier level, the top drop-down has a new **Availability Grouping** option. Choosing this shoes data for all instances grouped by availability group. Activity for databases that are not part of any availability group go under **Default**.

## Previous Precise versions

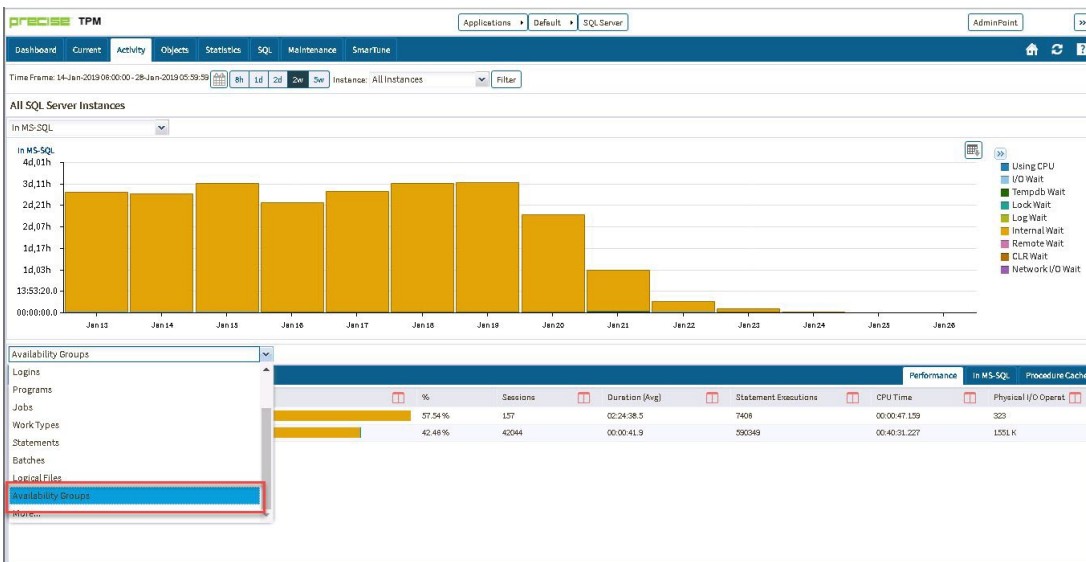
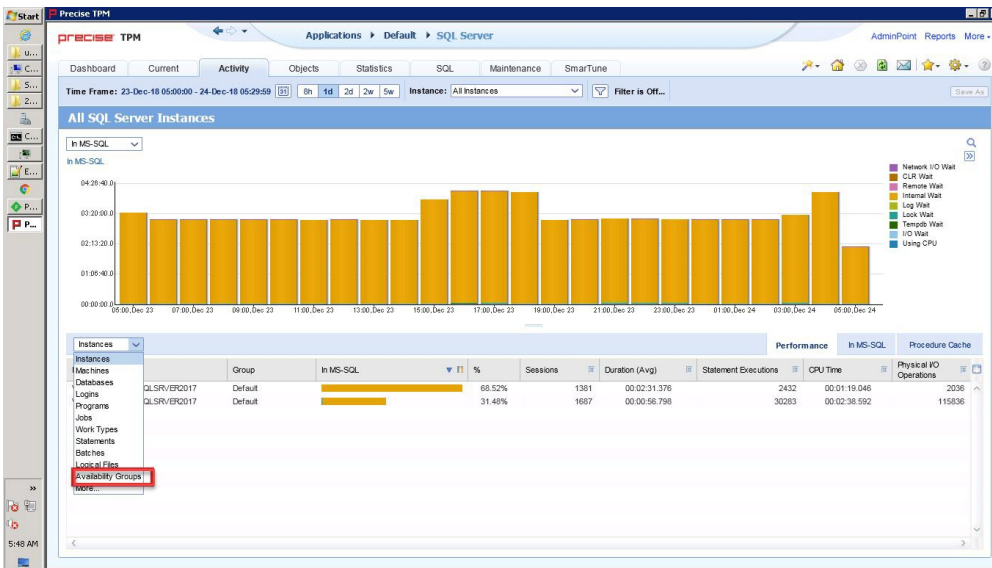


**Precise 10.0**



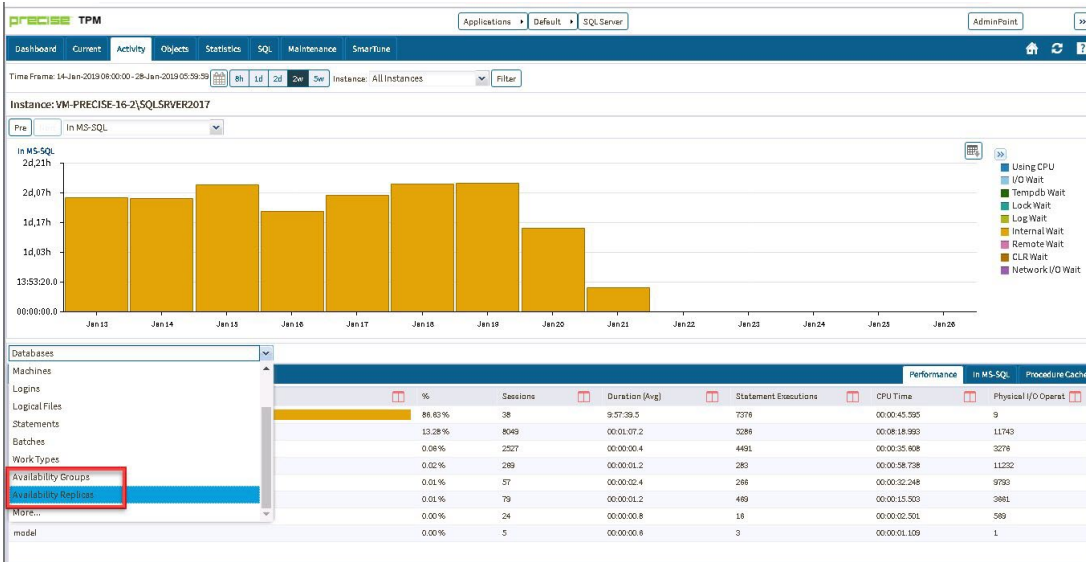
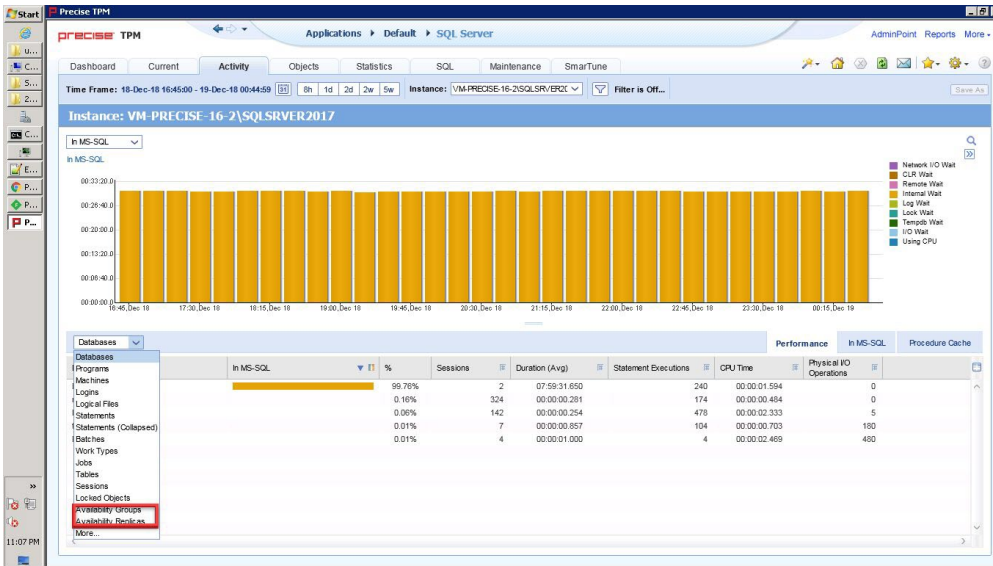
## Activity tab - Associate

The bottom **Associate** drop-down has a new **Availability Groups** option, as shown below in comparison of the previous Precise versions and Precise 10.0:



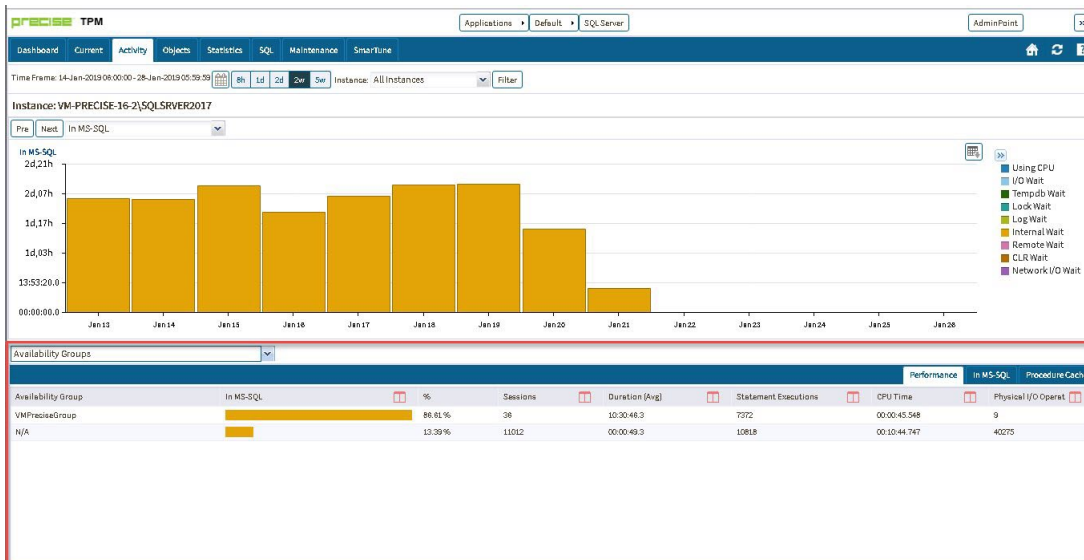
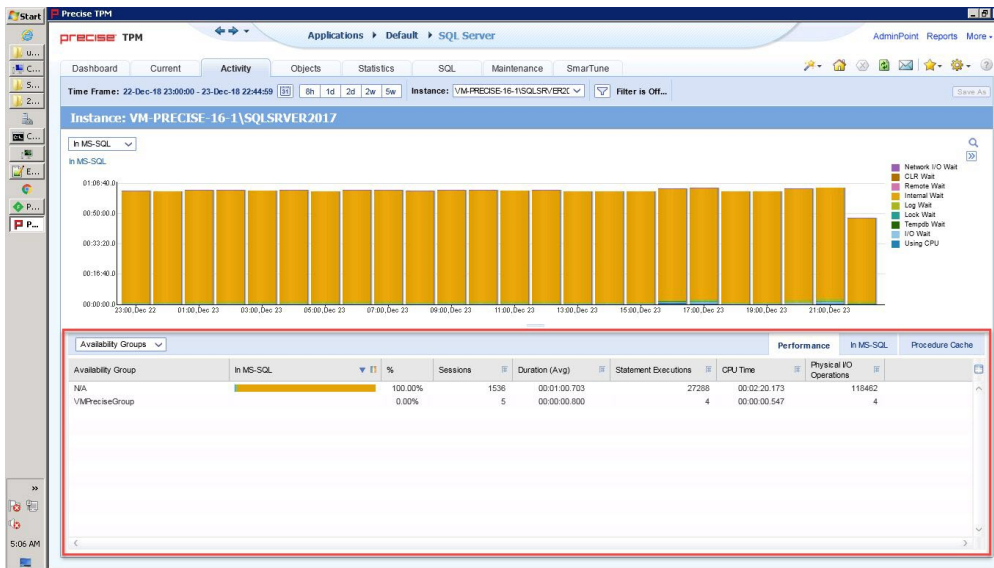
## Activity tab - Instance and Database context

At the instance and database context level, **Availability Groups** and **Availability Replicas** have been added. Selecting one of these options lists Availability Groups and replicas, respectively. Click one of these options to launch into the appropriate Availability Group or Replica context, as shown below in comparison of the previous Precise versions and Precise 10.0:





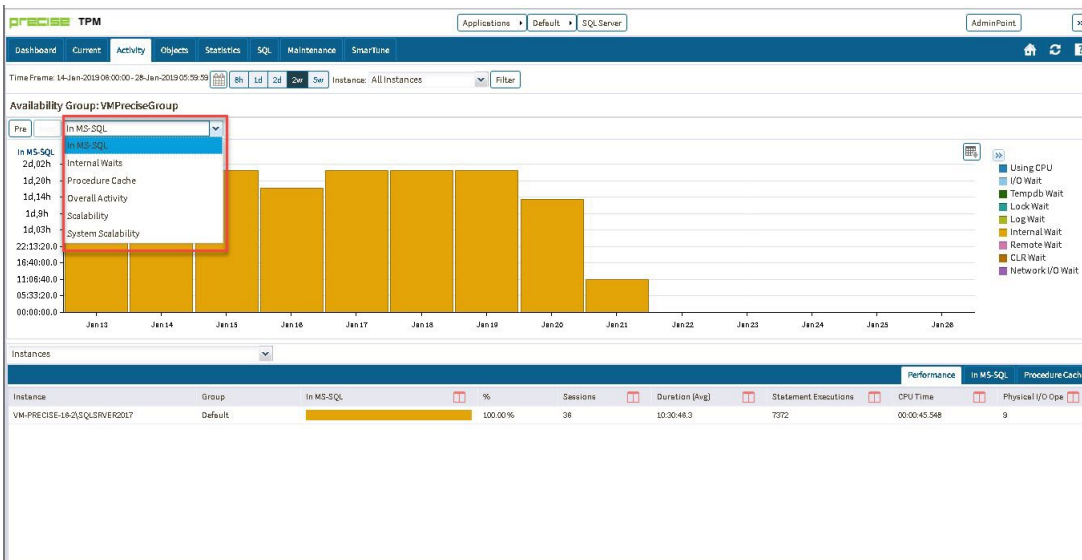
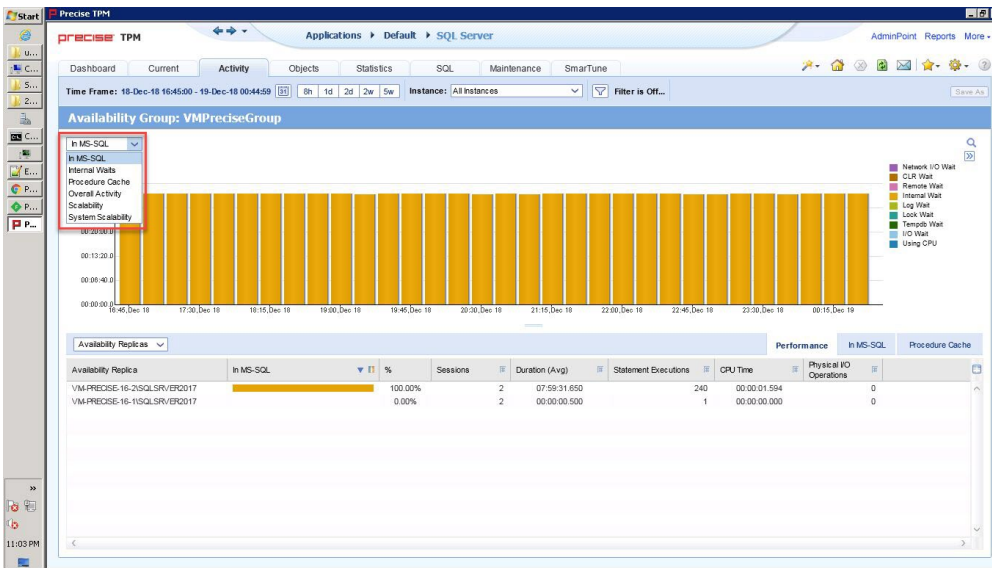




## Activity tab - Availability Group context

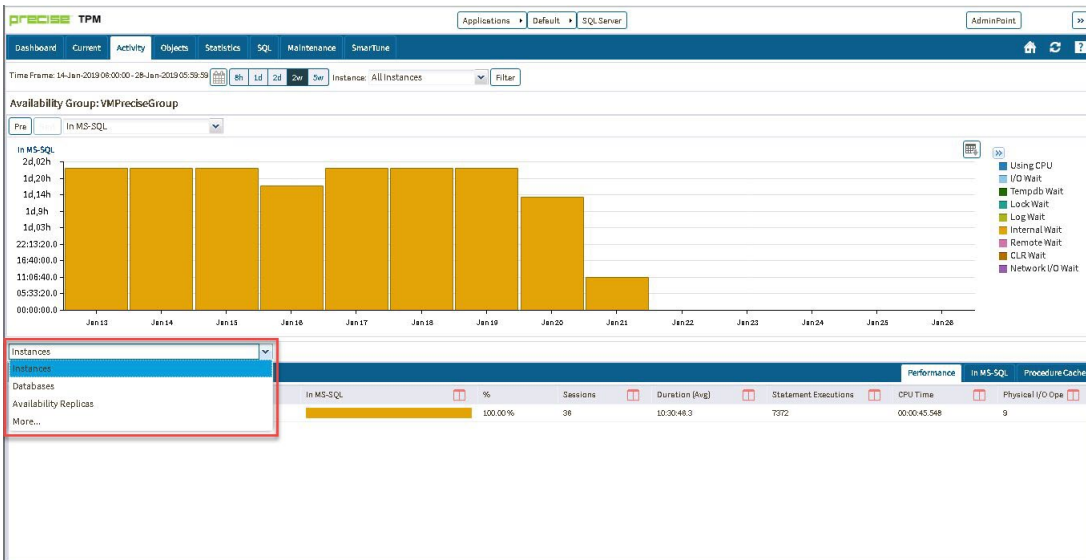
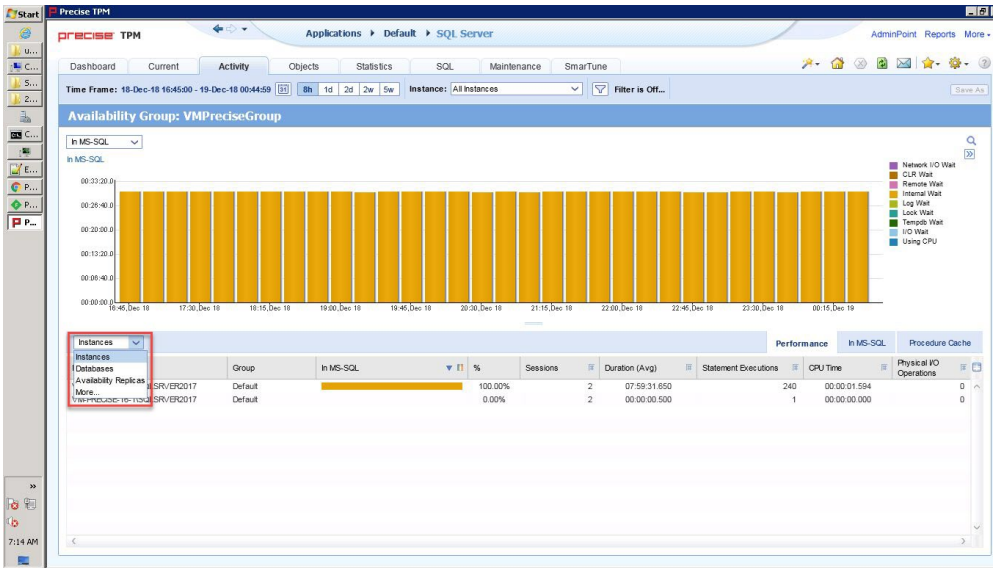
At an Availability Group context, the top drop-down includes the following options:

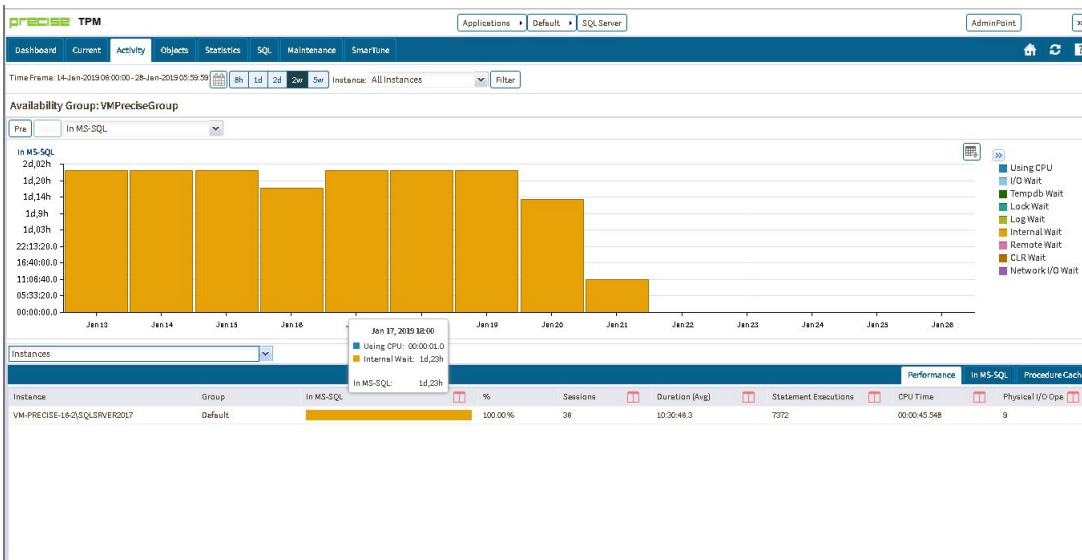
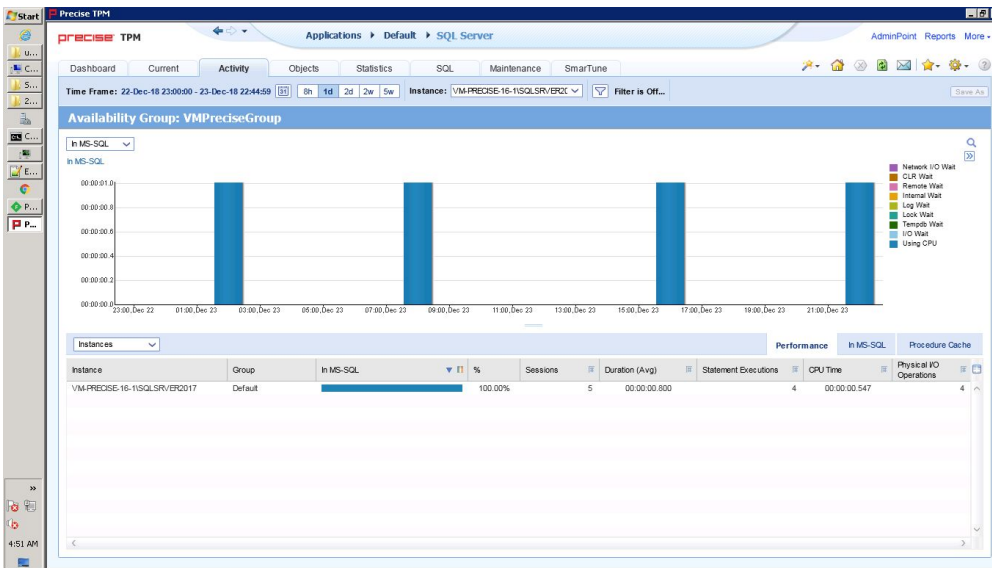
- Internal Waits
- Procedure Cache
- Overall Availability
- Scalability
- System Scalability



The bottom associate drop-down includes the following options:

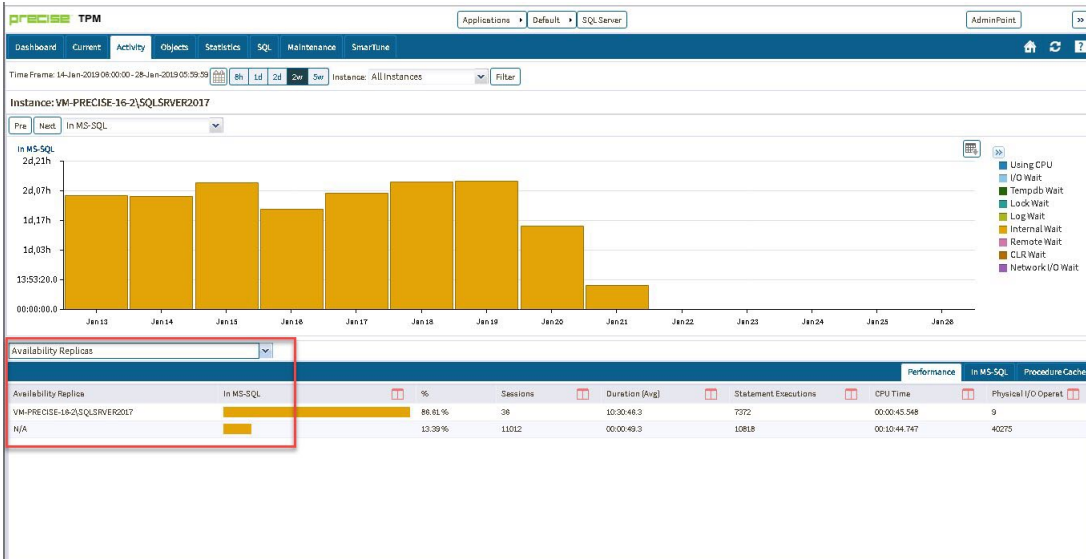
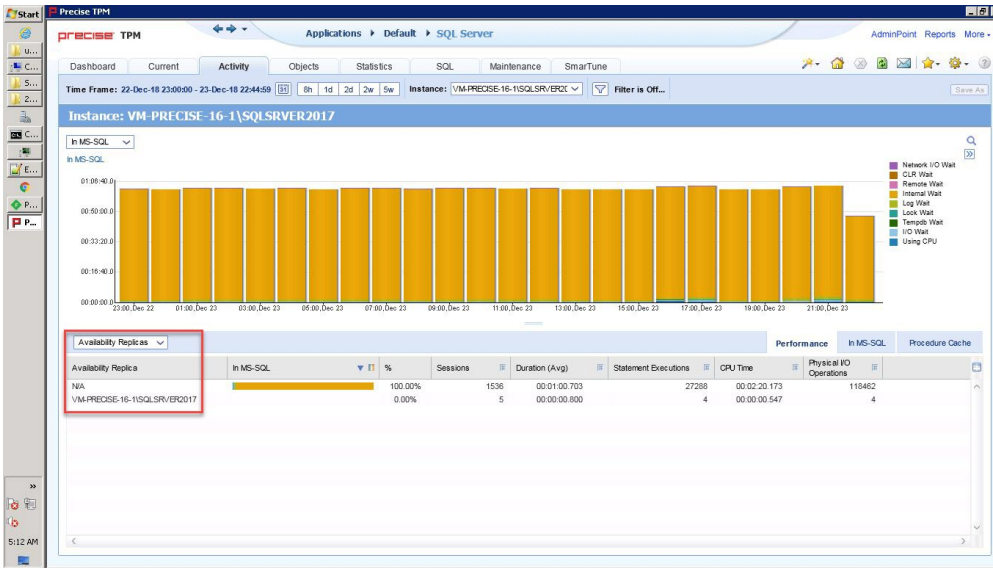
- Instances
- Databases
- Availability Replicas

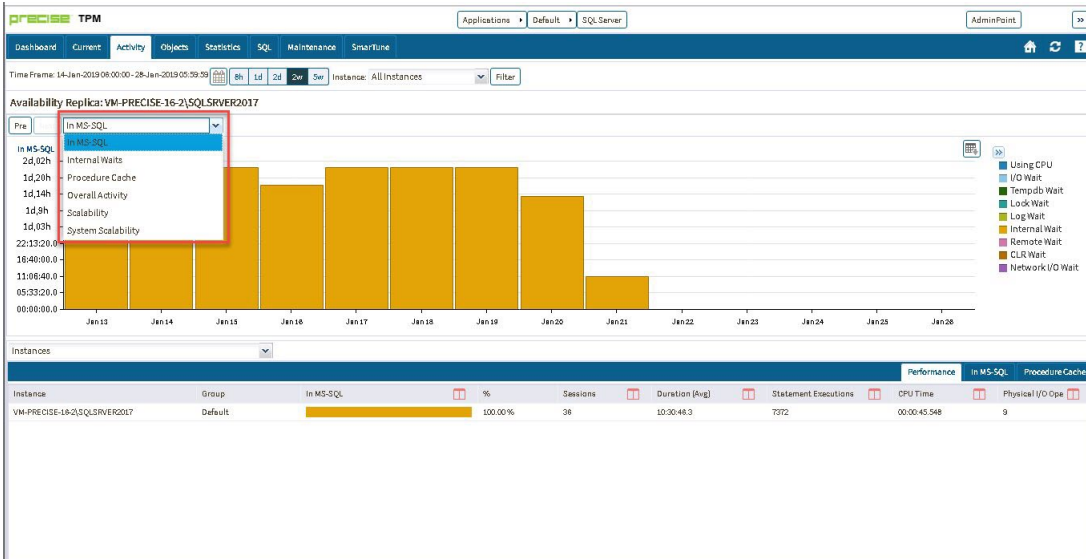
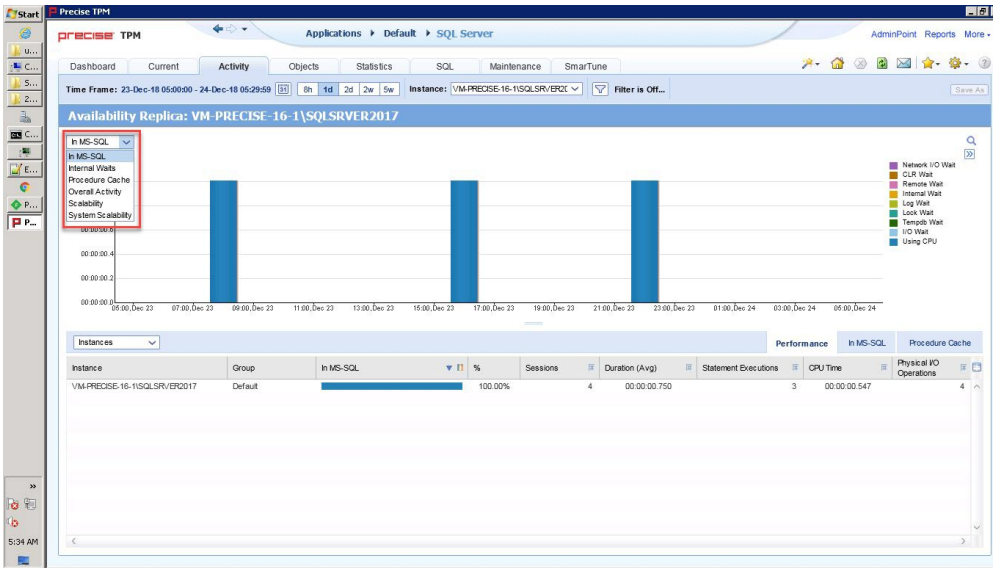


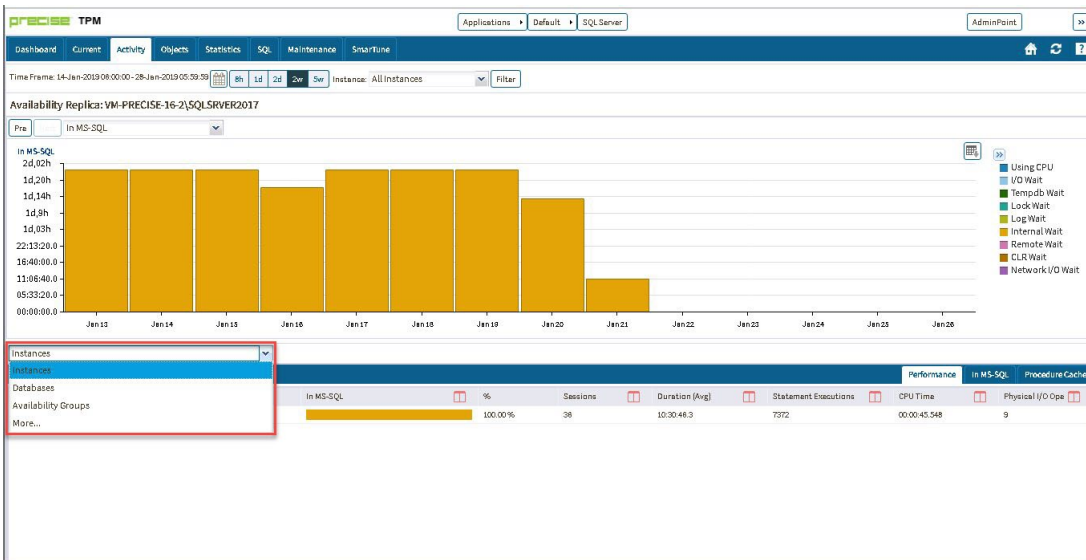
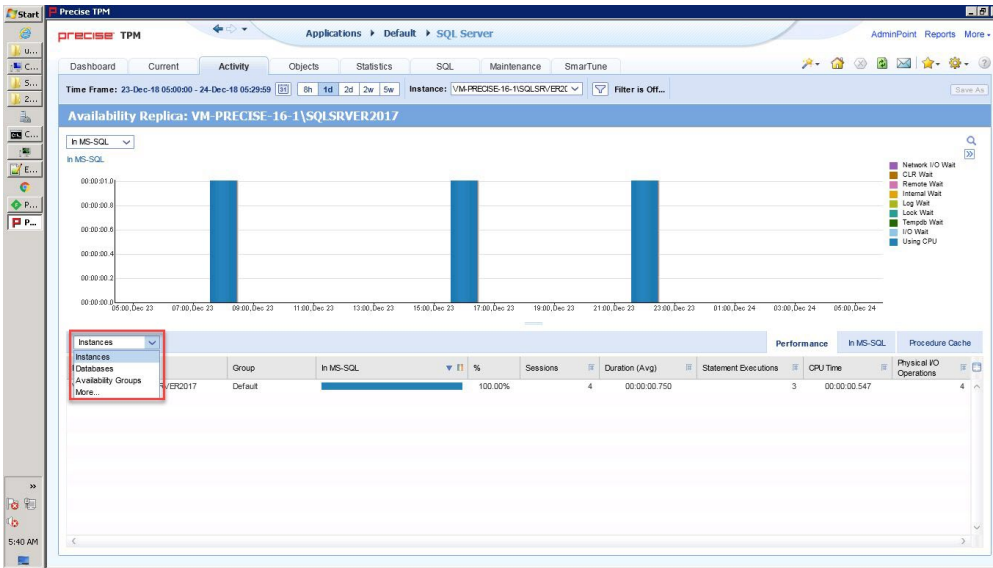


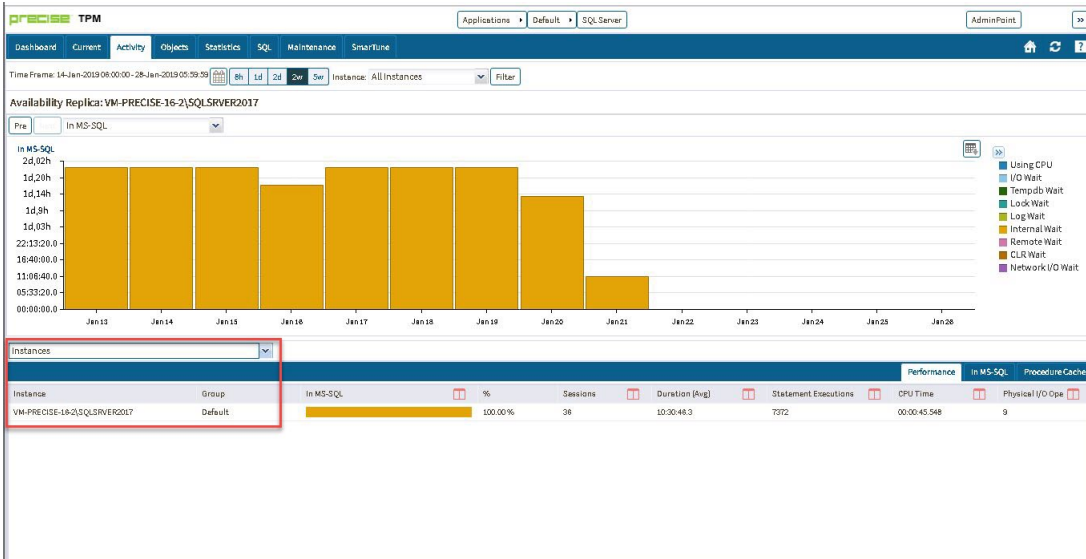
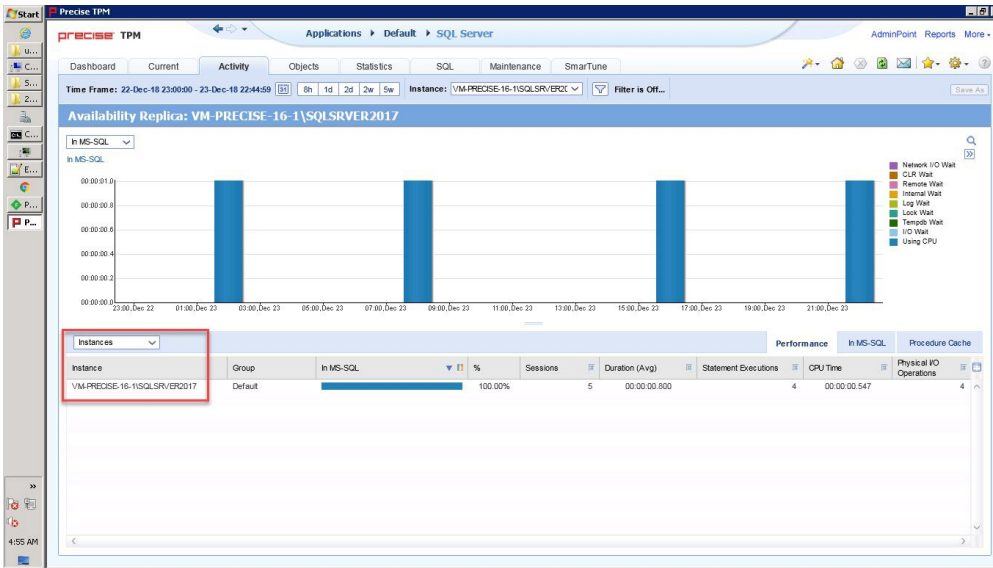
### Activity tab - Availability Replica context

At the Availability replica context, similar options are available at the top and bottom drop-downs, as shown below in comparison of the previous Precise versions and Precise 10.0:







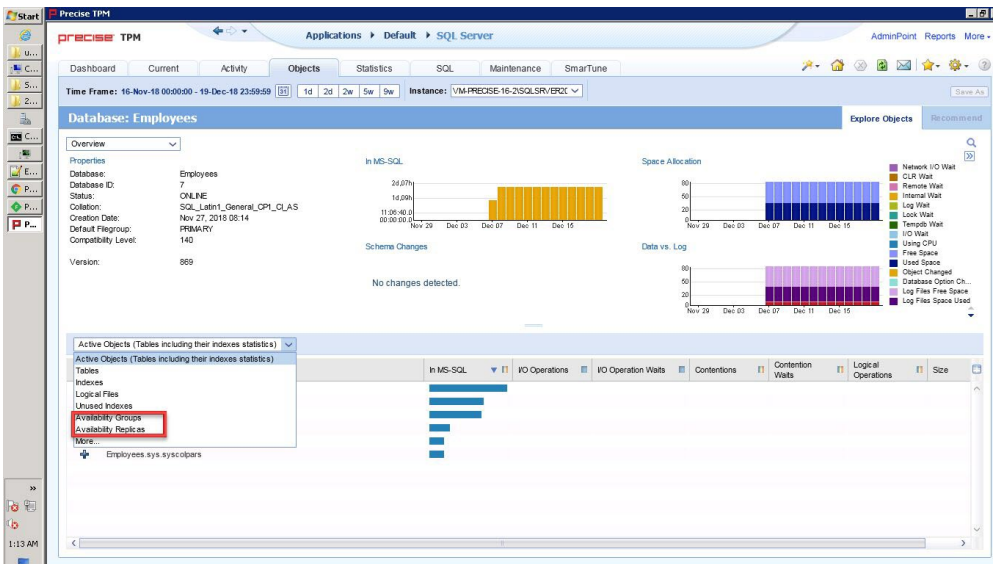
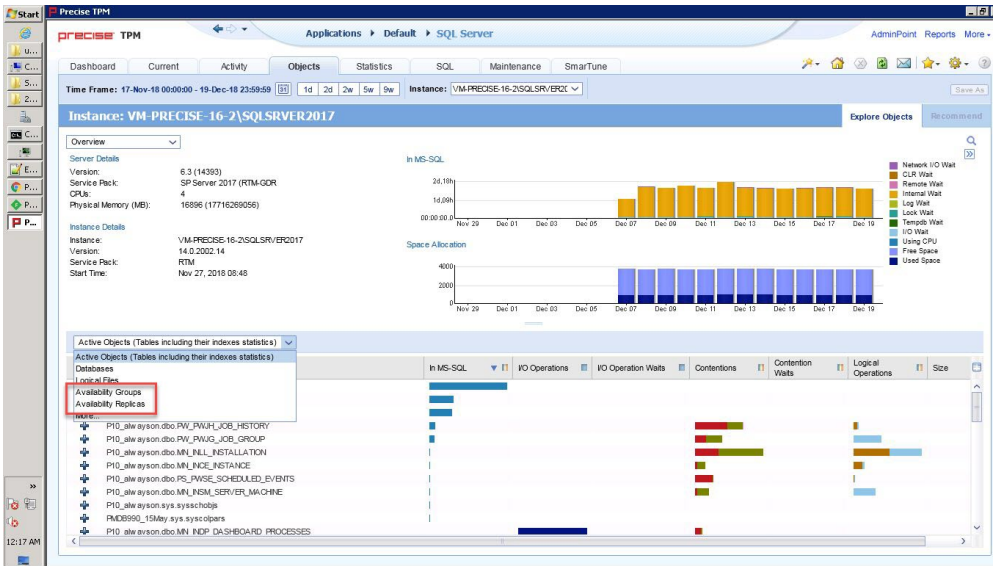


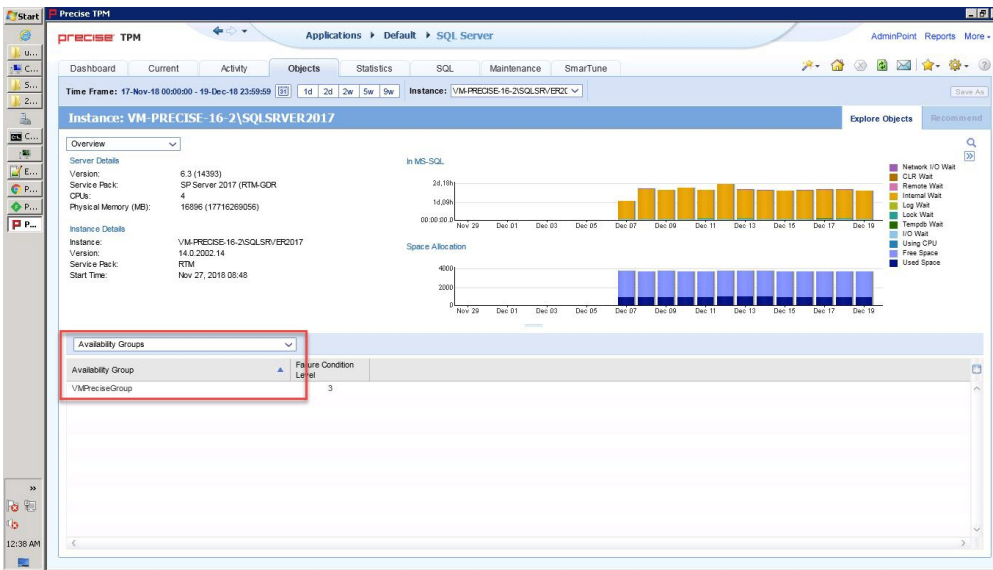
## Always On - Objects tab

In the Objects tab, under the Instance and Database context, **Availability Group** and **Availability Replicas** have been added to the bottom associate drop-down.

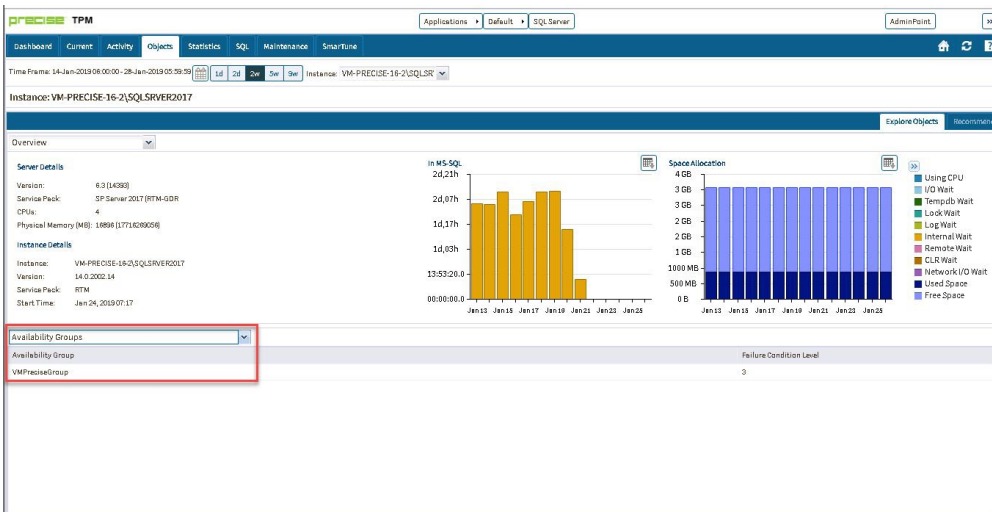
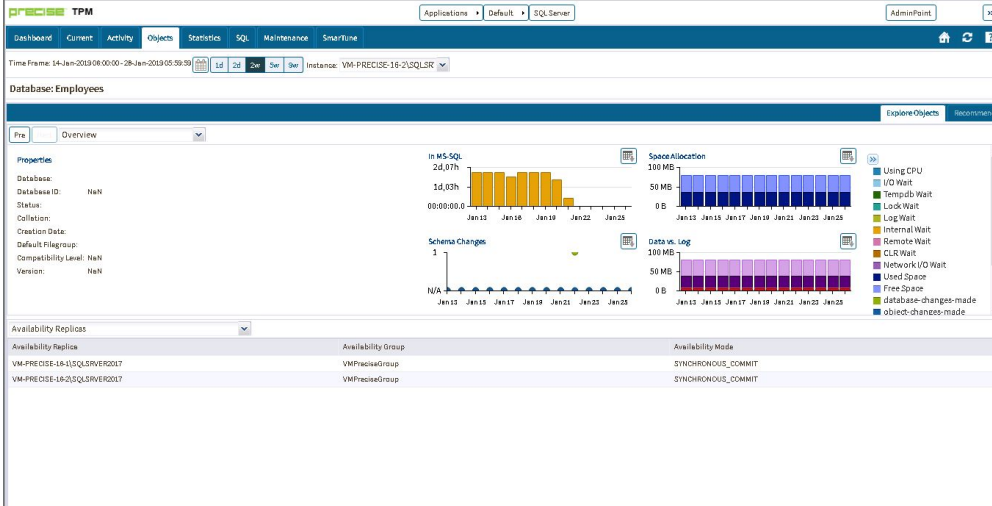
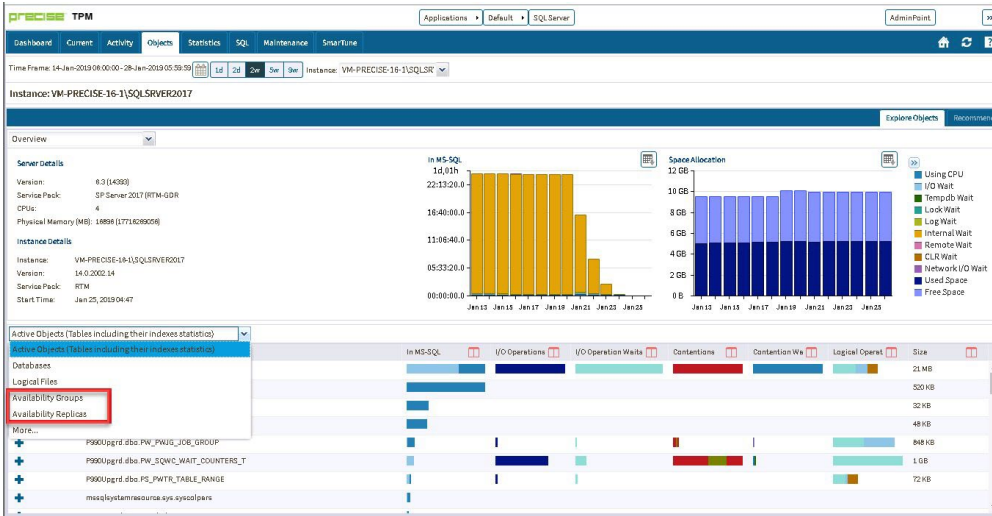
## Previous Precise Versions





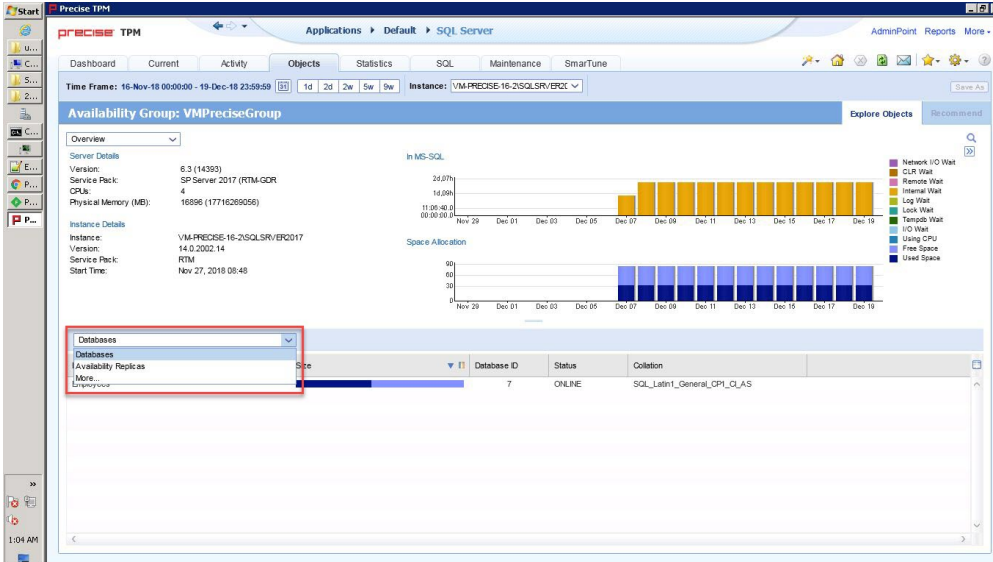


**Precise 10.0**

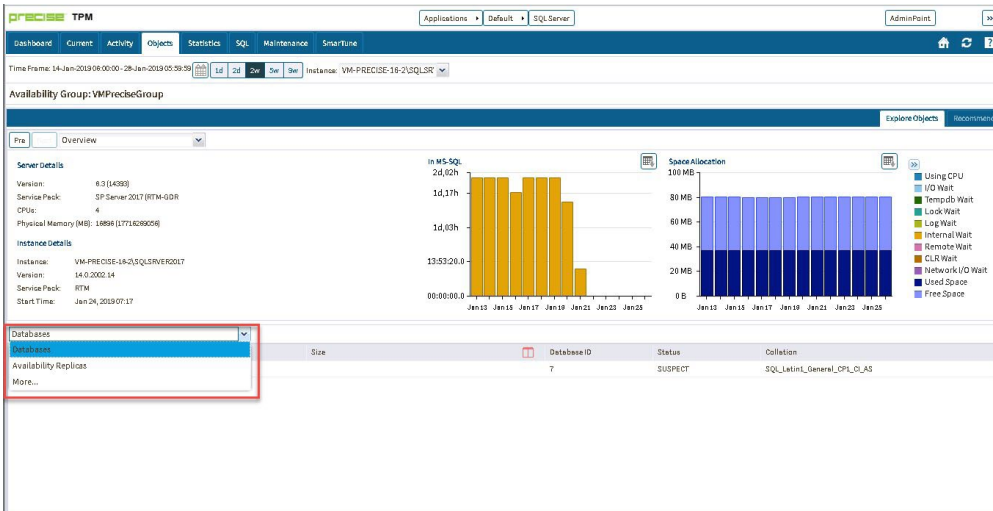


When an Availability group is clicked on the bottom grid, it launches to the Availability Group context. By default, an overview appears in the upper dropdown and a list of databases under this availability group appears in the lower dropdown. See the following images for more information.

**Previous Precise versions**

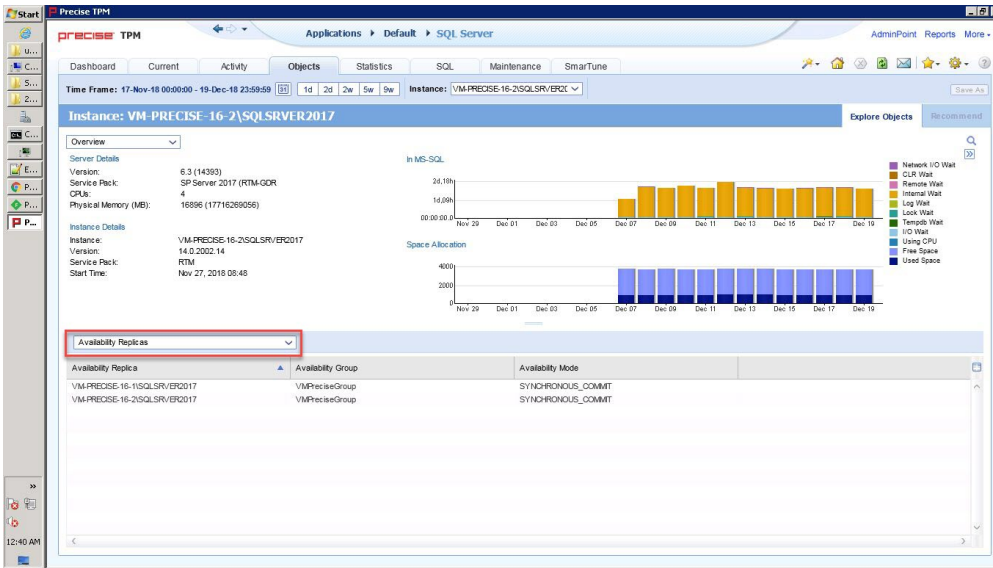


**Precise 10.0**

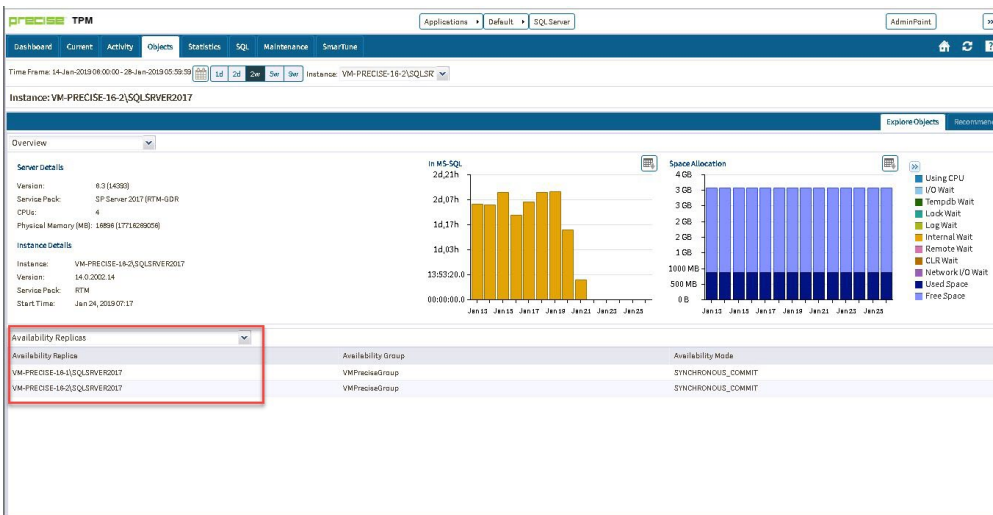


When Availability Replicas is selected in the bottom dropdown, it displays the list of Availability replicas.

**Previous Precise Versions**

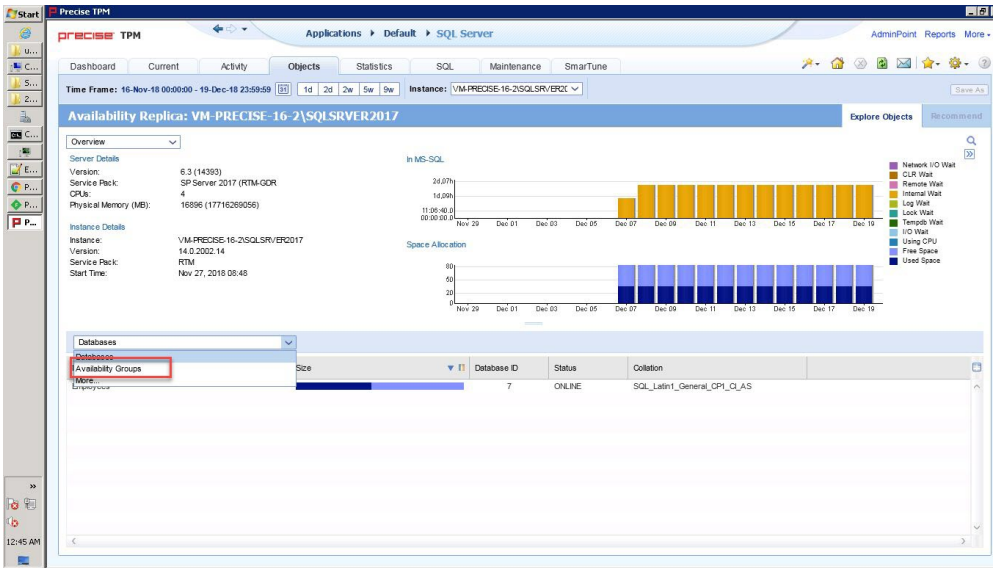


### Precise 10.0

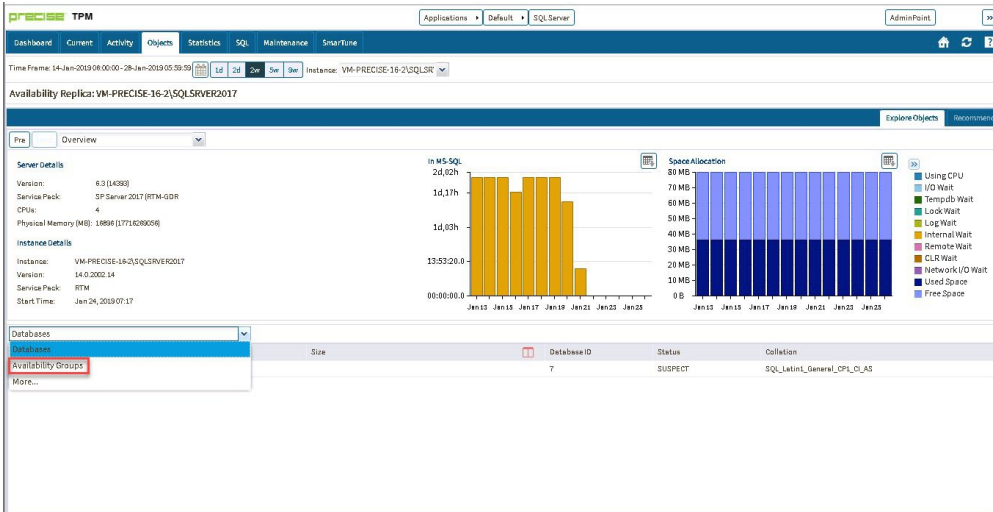


Clicking on an Availability Replica row launches to the Availability Replica context.

### Previous Precise Versions



## Precise 10.0

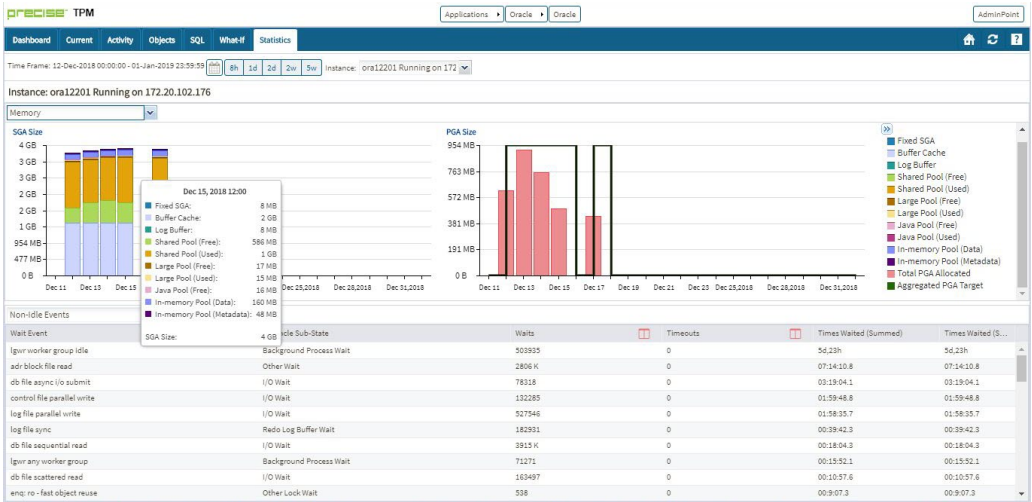


## Oracle 12c additional metrics

Precise 10.0 supports certain additional metrics for Oracle 12c databases like In-Memory support-related information, UNDO tablespaces and activity with respect to each pluggable database, etc.

## Statistics tab

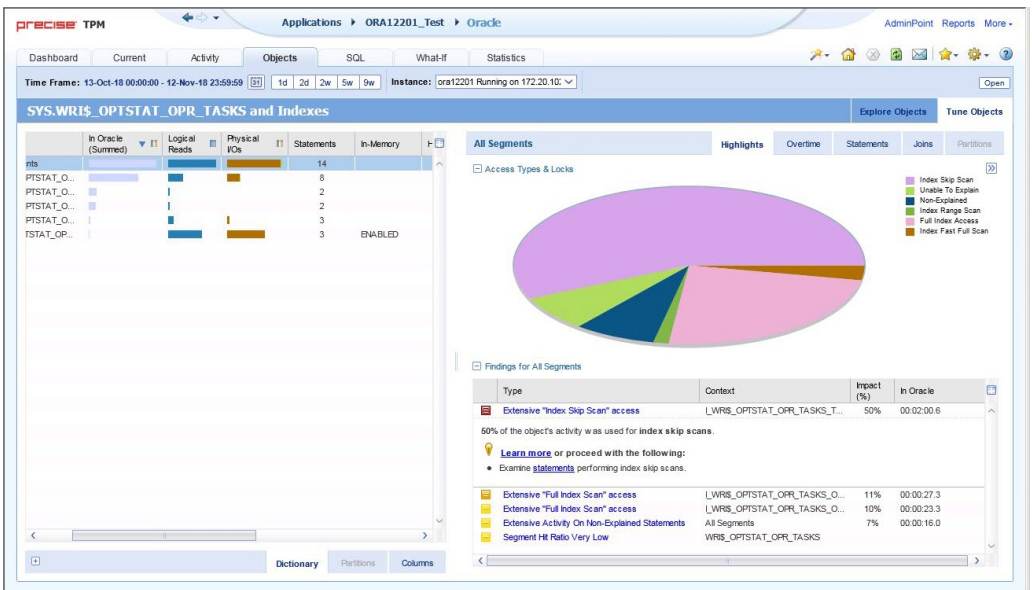
The Statistics tab now displays the size of In-Memory pools.



## Objects tab

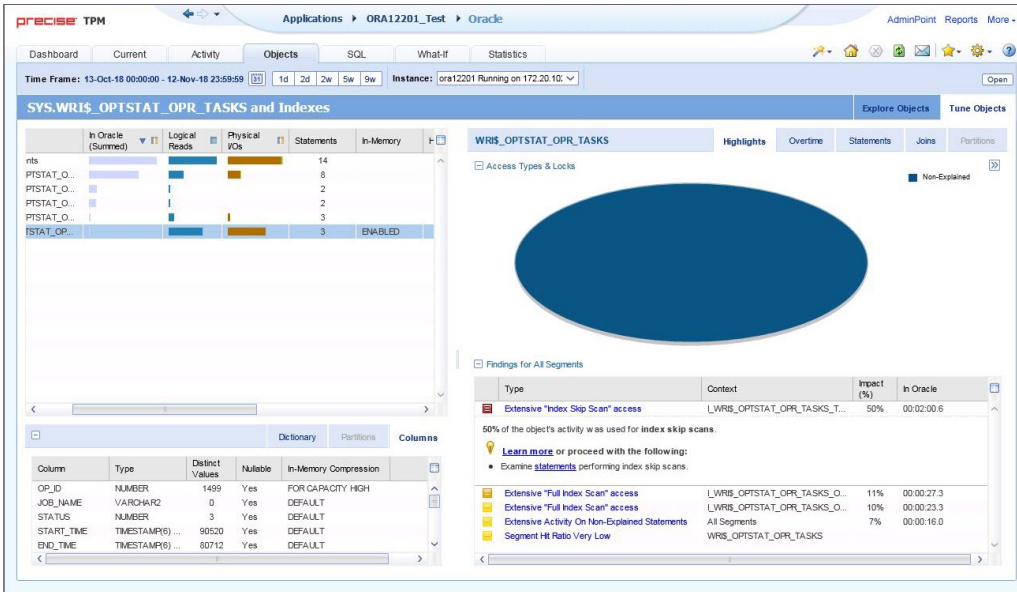
### In-Memory flag for objects

In the Objects tab, the In-Memory column displays ENABLED if an active object is in the In-Memory area for tables and indexes.



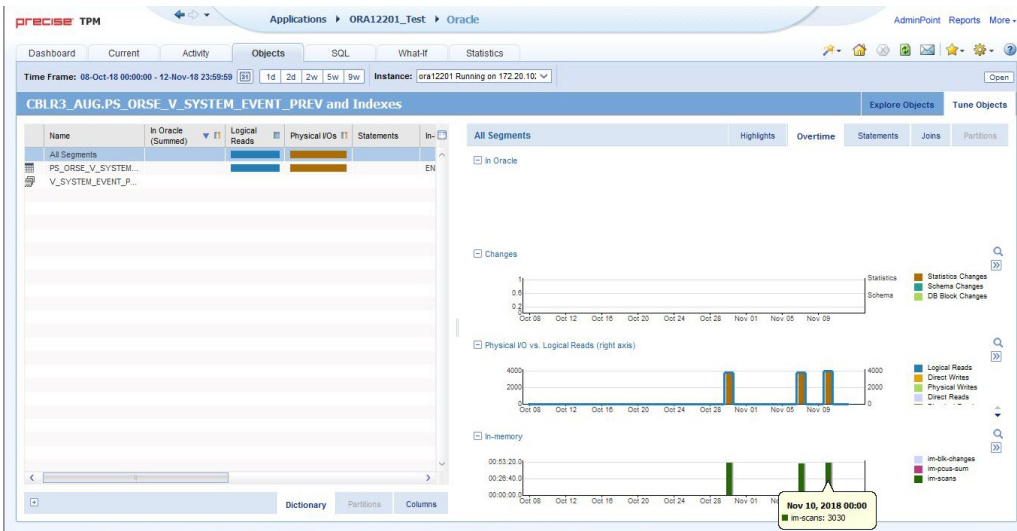
## In-Memory information for columns of an object

In addition, the In-Memory Compression value is displayed for columns of the Active Object in the context.



## In-Memory usage graph

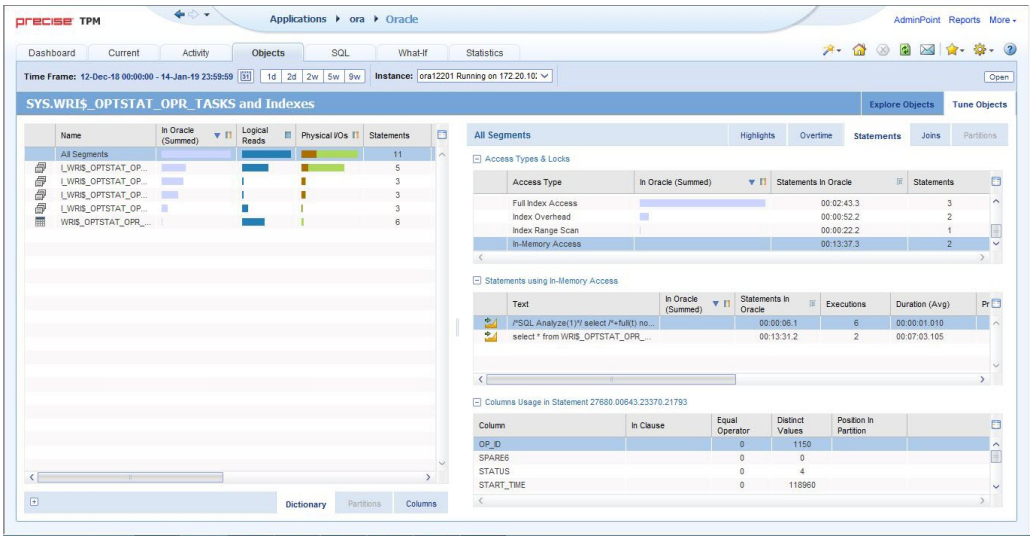
For the object in the left top table, we now show the In-Memory usage chart in the Overtime tab for the time frame selected.



## In-Memory Access Type

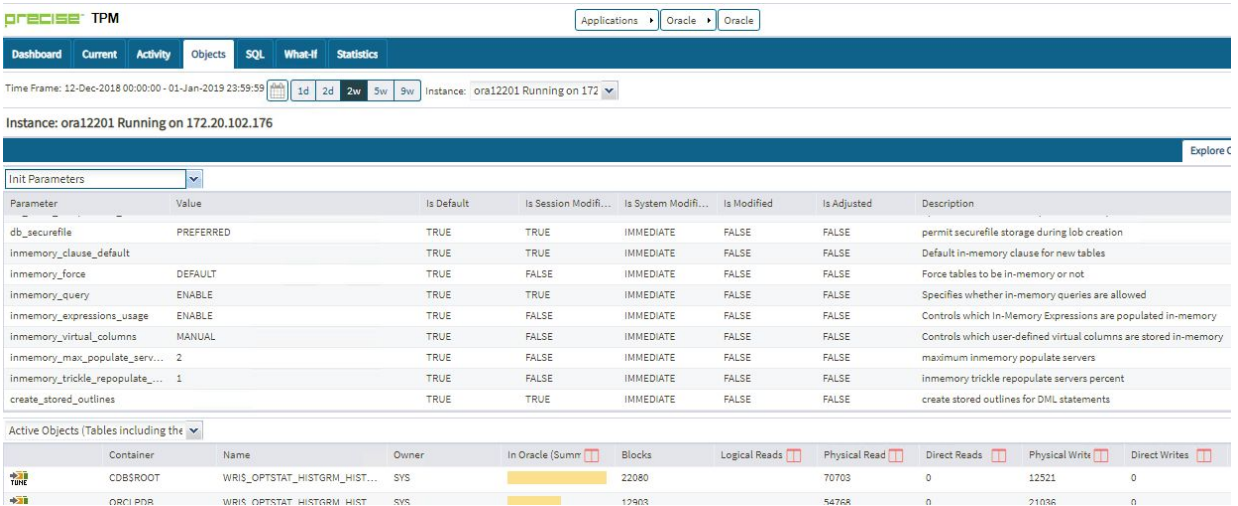
For the object in the left top table, we now show the In-Memory Access Type and statements using the In-Memory Access Type in the Statements tab for the time frame selected.





## Init parameters related to In-Memory Area support

In-Memory parameters are shown in the Init Parameters list.



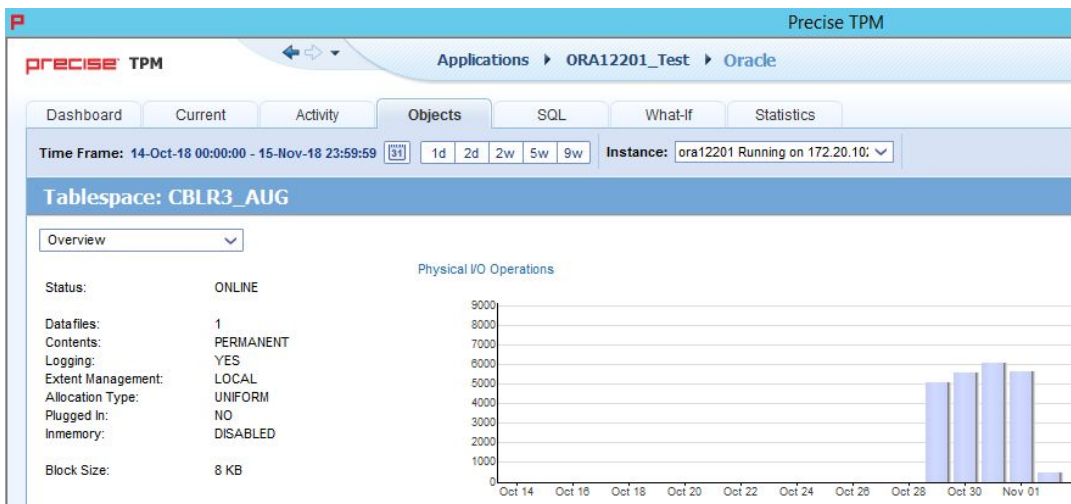
## Undo tablespaces for each PDB

Oracle 12c R2 includes the capability to have a Local UNDO tablespace for each pluggable database (PDB). In the Objects workspace, the UNDO tablespace for each PDB appears in the Tablespaces associate dropdown option.

Container	Tablespace	Status	Contents	Logging	Extent Management	Allocation Type	Plugged In
CDB\$ROOT	USERS	ONLINE	PERMANENT	YES	LOCAL	SYSTEM	N
ORCLPDB	USERS	ONLINE	PERMANENT	YES	LOCAL	SYSTEM	N
CDB\$ROOT	UNDOTBS2	ONLINE	UNDO	YES	LOCAL	SYSTEM	N
PDB3	UNDOTBS1	ONLINE	UNDO	YES	LOCAL	SYSTEM	N
ORCLPDB	UNDOTBS02	ONLINE	UNDO	YES	LOCAL	SYSTEM	N
CDB\$ROOT	TEST3_TMP	ONLINE	TEMPORARY	NO	LOCAL	UNIFORM	N
CDB\$ROOT	TEST3	ONLINE	PERMANENT	YES	LOCAL	SYSTEM	N
CDB\$ROOT	TEST123_TMP	ONLINE	TEMPORARY	NO	LOCAL	UNIFORM	N
ORCLPDB	TEST123	ONLINE	PERMANENT	YES	LOCAL	UNIFORM	N
CDB\$ROOT	TEST123	ONLINE	PERMANENT	YES	LOCAL	UNIFORM	N

## In-Memory for tablespaces

At the tablespace context in the Objects tab, the In-Memory flag for the tablespace in context is shown.



## In-Memory details for the tables

In the Objects tab, at the Table context, In-Memory details related to the table in context are shown.

**precise TPM** Applications ▶ Oracle ▶ Oracle AdminPoint Reports More -

Dashboard Current Activity **Objects** SQL What-If Statistics

Time Frame: 19-Oct-18 00:00:00 - 24-Nov-18 23:59:59 1d 2d 5w 9w Instance: ora12201 Running on 172.20.10.1

**Table: SYS.WRI\$\_OPTSTAT\_OPR\_TASKS** Explore Objects Tune Objects

Overview

Created On: Jan 26, 2017 13:53 In Oracle (Summed) Changes

Status: VALID

Partitioned: No

Nested: No

Temporary: No

Index Organized: No

Cluster: Not clustered

In-Memory: ENABLED

In-Memory Priority: NONE

In-Memory Distribute: AUTO

In-Memory Compression: FOR QUERY LOW

In-Memory Duplicate: NO DUPLICATE

Blocks Rows

Columns Dictionary Statistics Usage

Container	Column	Position	▲	Predefined Type	Type	Length	Precision	Scale	Nullable
CDB\$ROOT	OP_ID	1		YES	NUMBER	22			Yes
CDB\$ROOT	JOB_NAME	2		YES	VARCHAR2	50			Yes
CDB\$ROOT	STATUS	3		YES	NUMBER	22			Yes
CDB\$ROOT	START_TIME	4		YES	TIMESTAMP(S) WITH ...	13		6	Yes
CDB\$ROOT	END_TIME	5		YES	TIMESTAMP(S) WITH ...	13		6	Yes
CDB\$ROOT	TARGET	6		YES	VARCHAR2	512			Yes
CDB\$ROOT	TARGET_OBJN	7		YES	NUMBER	22			Yes
CDB\$ROOT	TARGET_TYPE	8		YES	NUMBER	22			Yes
CDB\$ROOT	TARGET_SIZE	9		YES	NUMBER	22			Yes
CDB\$ROOT	ESTIMATED_COST	10		YES	NUMBER	22			Yes