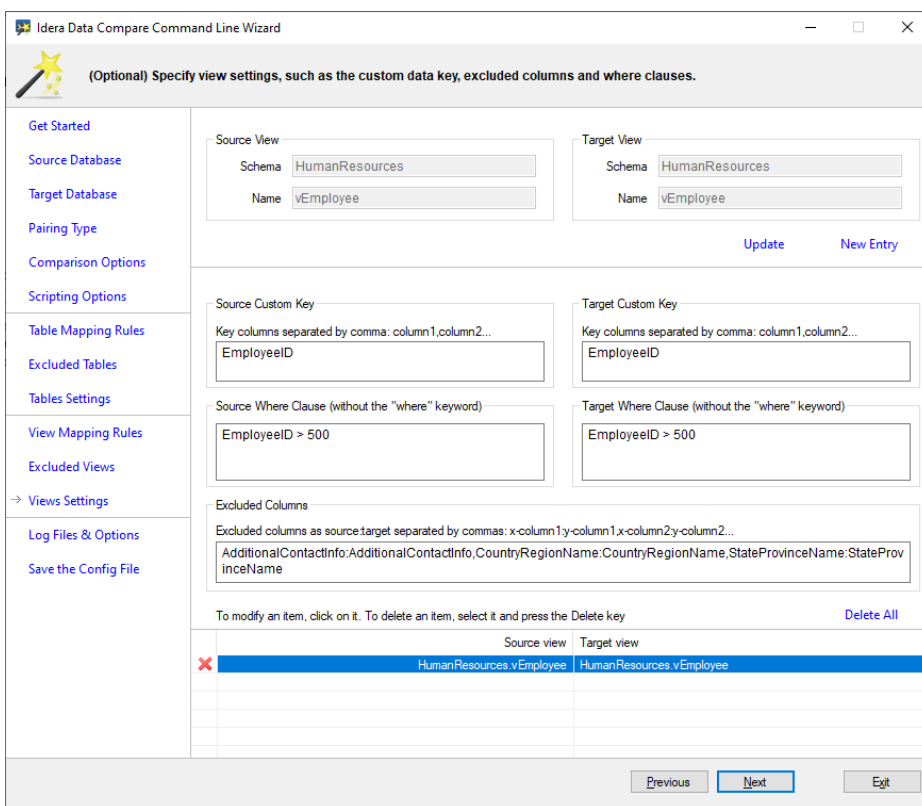


# Customizing Views

The View Settings step allows you to customize various view settings. You can change all or some of the following steps:

- The key that should be used to compare the view data.
- A where clause that should be used to filter the view data.
- The view columns that should be excluded from the comparison.

**i** The wizard steps related to views are disabled by default. To enable them, check the comparison option Compare and synchronize views.



The following fragment is the xml generated when various view settings are changed:

```

<ViewPairs>
  <!--**** *****-->
  <!--**** custom views ****-->
  <!--**** HumanResources.vEmployee ****-->
  <Pair Action="Include">
    <LeftObject Schema="HumanResources" Name="vEmployee">
      <Key Name="c93f41fd-27c8-43fe-9ec9-ee2f5bb4eb1a">
        <Column>EmployeeID</Column>
      </Key>
    </LeftObject>
    <RightObject Schema="HumanResources" Name="vEmployee">
      <Key Name="7da3f3cf-762c-46ea-8e85-7a8027a83764">
        <Column>EmployeeID</Column>
      </Key>
    </RightObject>
    <Columns Action="Exclude">
      <ColumnPair>
        <LeftColumn>AdditionalContactInfo</LeftColumn>
        <RightColumn>AdditionalContactInfo</RightColumn>
      </ColumnPair>
      <ColumnPair>
        <LeftColumn>CountryRegionName</LeftColumn>
        <RightColumn>CountryRegionName</RightColumn>
      </ColumnPair>
      <ColumnPair>
        <LeftColumn>StateProvinceName</LeftColumn>
        <RightColumn>StateProvinceName</RightColumn>
      </ColumnPair>
    </Columns>
    <WhereClause>EmployeeID &gt; 500</WhereClause>
  </Pair>
  <!--**** *****-->
</ViewPairs>

```