

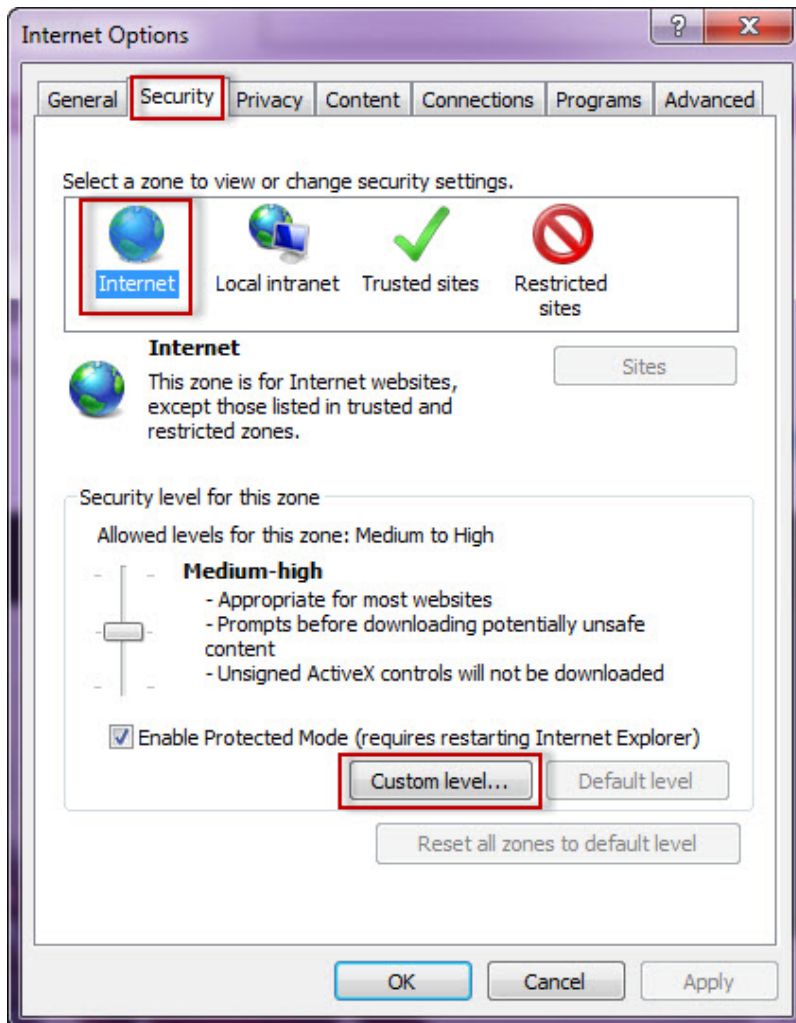
Configuring your browser for Windows Authentication

In order to be able to use Windows Authentication to log into SQL Enterprise Job Manager, you have to configure your browser settings.

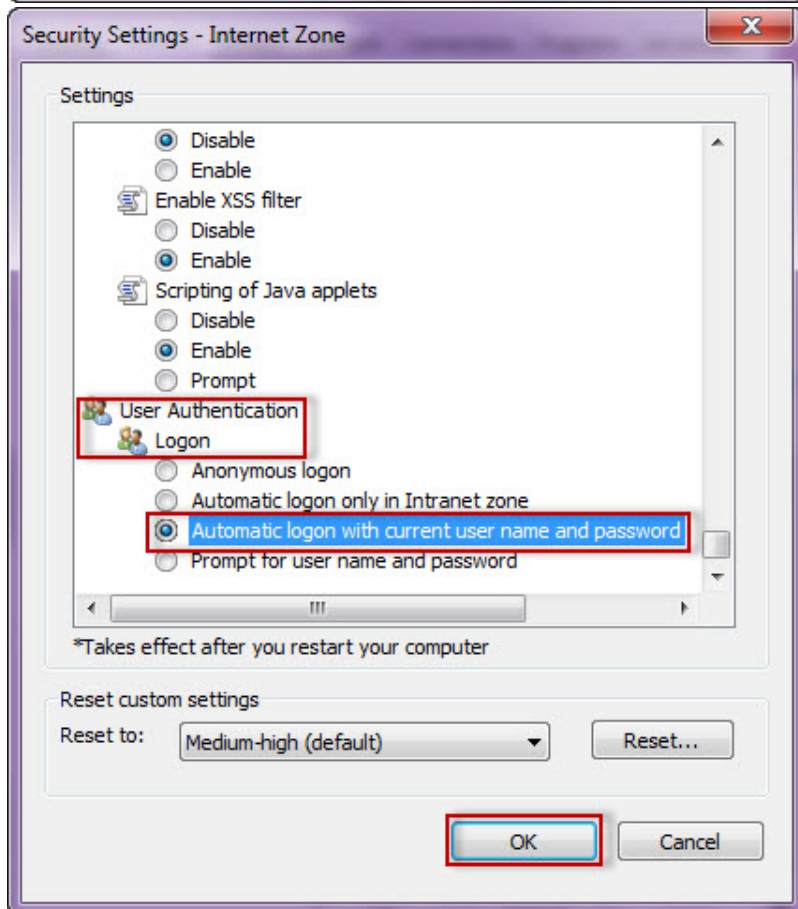
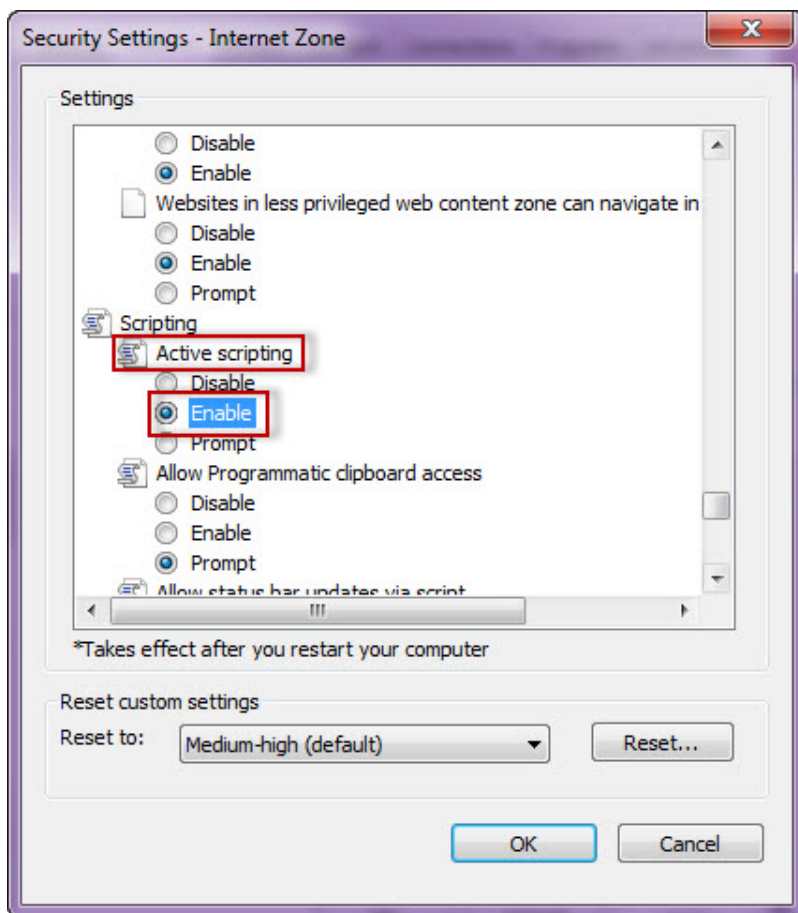
Internet Explorer 9,10,11

To configure these versions of **Internet Explorer** , follow these steps:

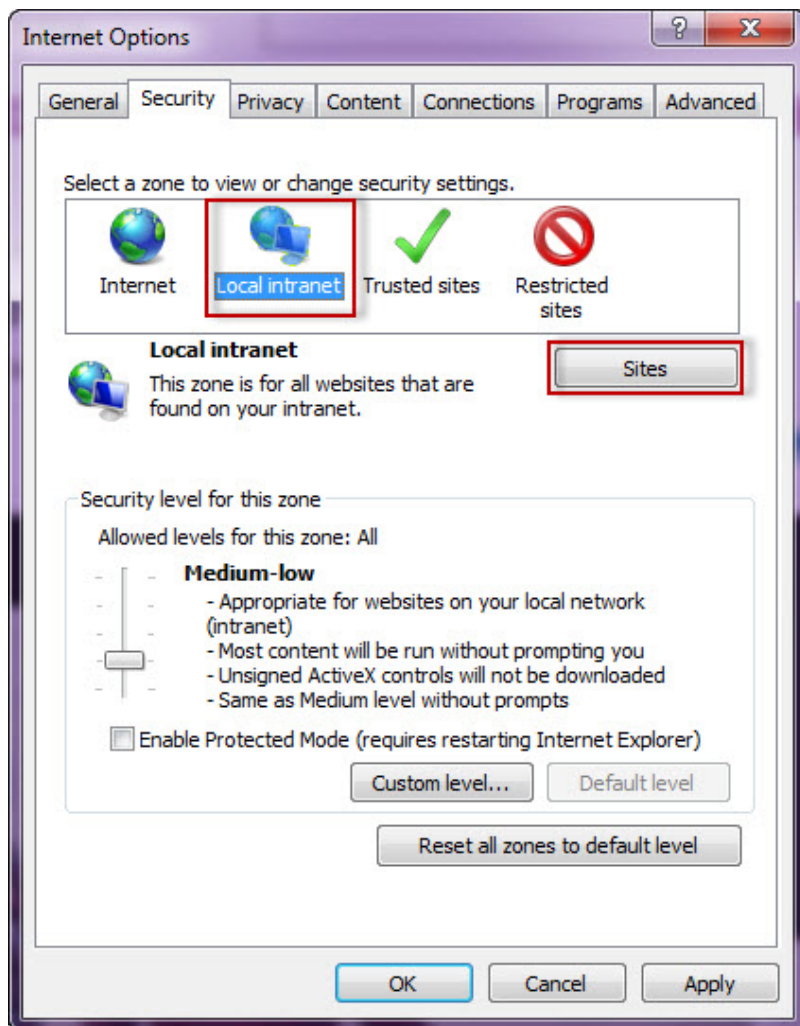
1. Go to **Internet Options**
2. Click **Security**
3. Click **Internet** and then **Custom Level**



4. Go to Scripting/Active scripting and make sure **Enable** is selected.
5. Then go to User Authentication/Logon and make sure **Automatic logon with current user name and password** is selected.
6. Click **OK**.

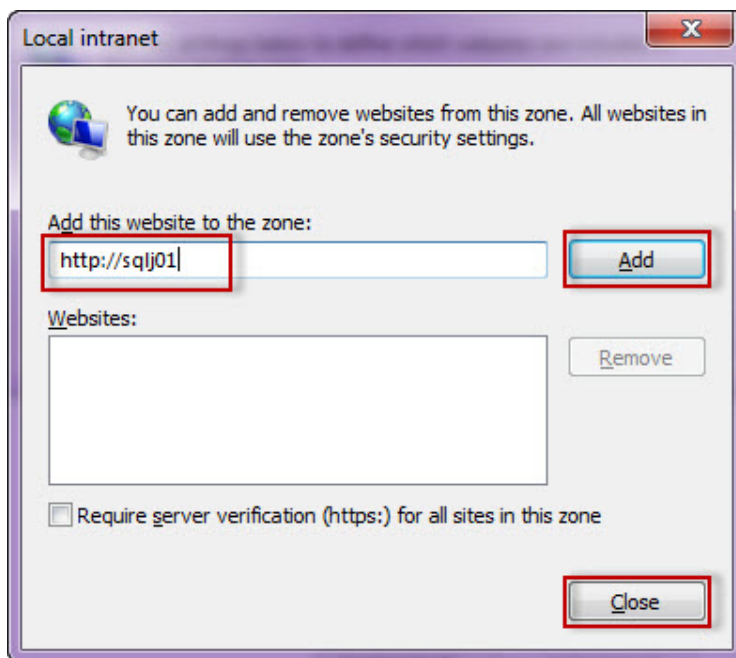


7. Click **Local intranet** and then **Sites**



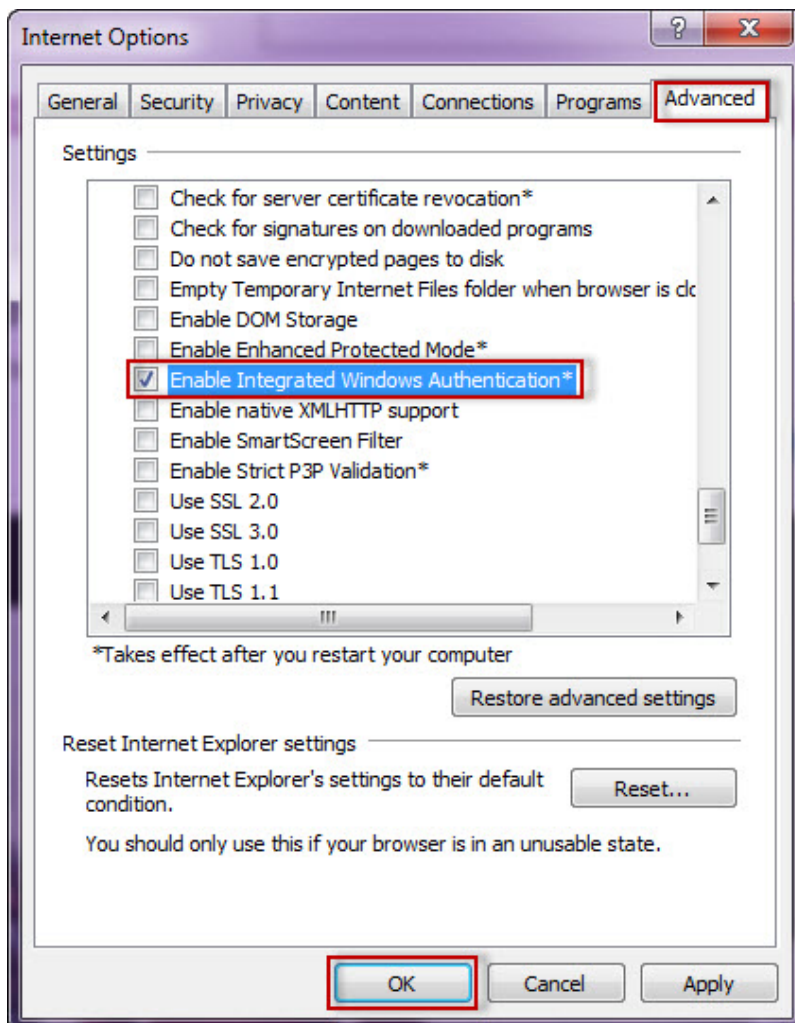
8. Type the following site **http://sqlj01** and click **Add**.

9. Click **Close**.

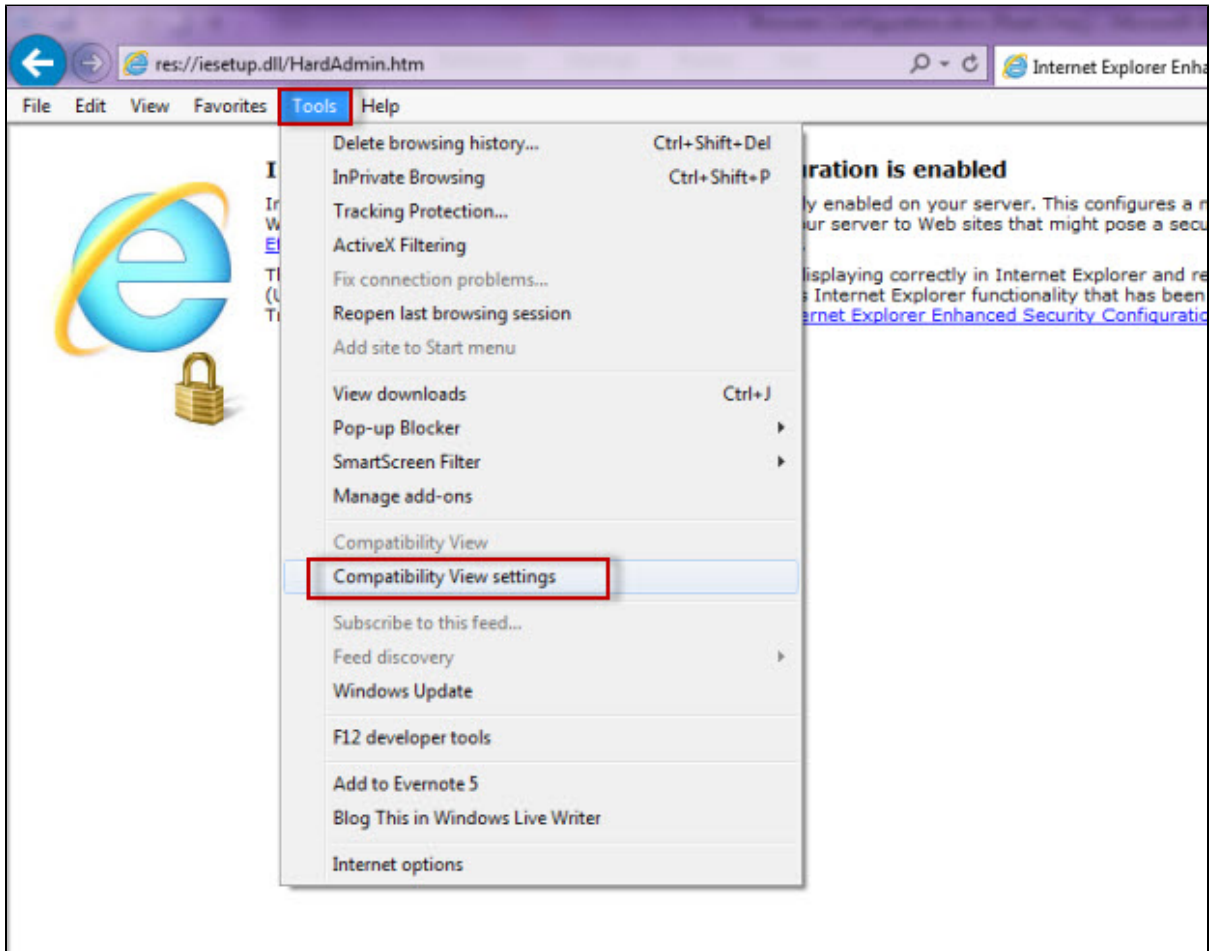


10. Go to **Advanced** and make sure **Enable Integrated Windows Authentication** is selected.

11. Click **OK**.

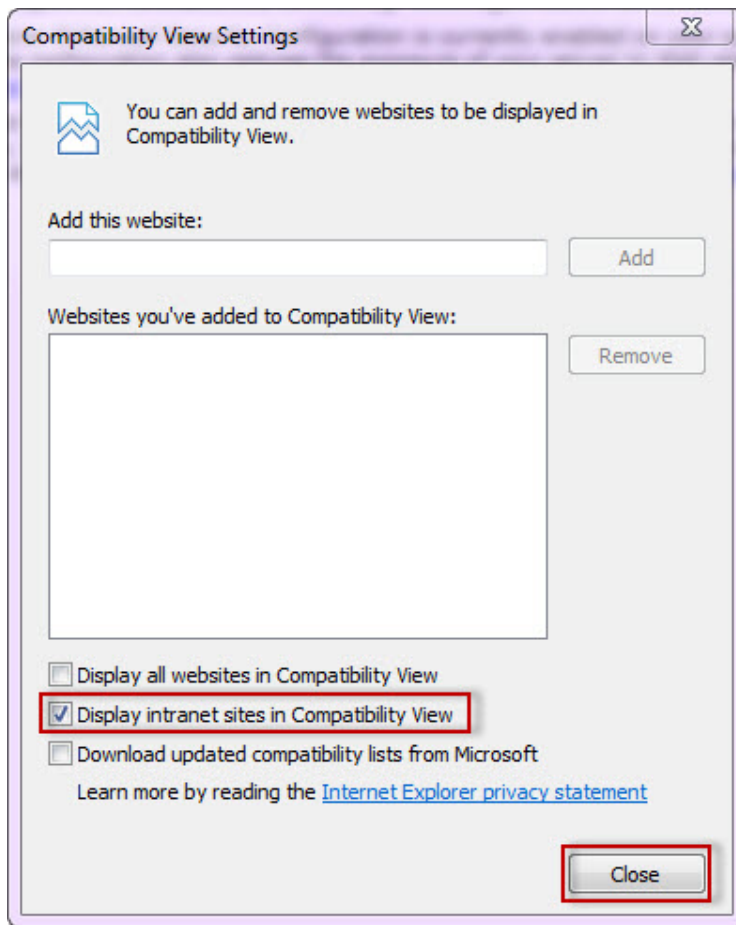


11. Go to **Tools** in the menu bar, and select **Compatibility View Settings**.



12. In the **Compatibility View Settings** window make sure **Display intranet sites in Compatibility View** is selected.

13. Click **Close**.

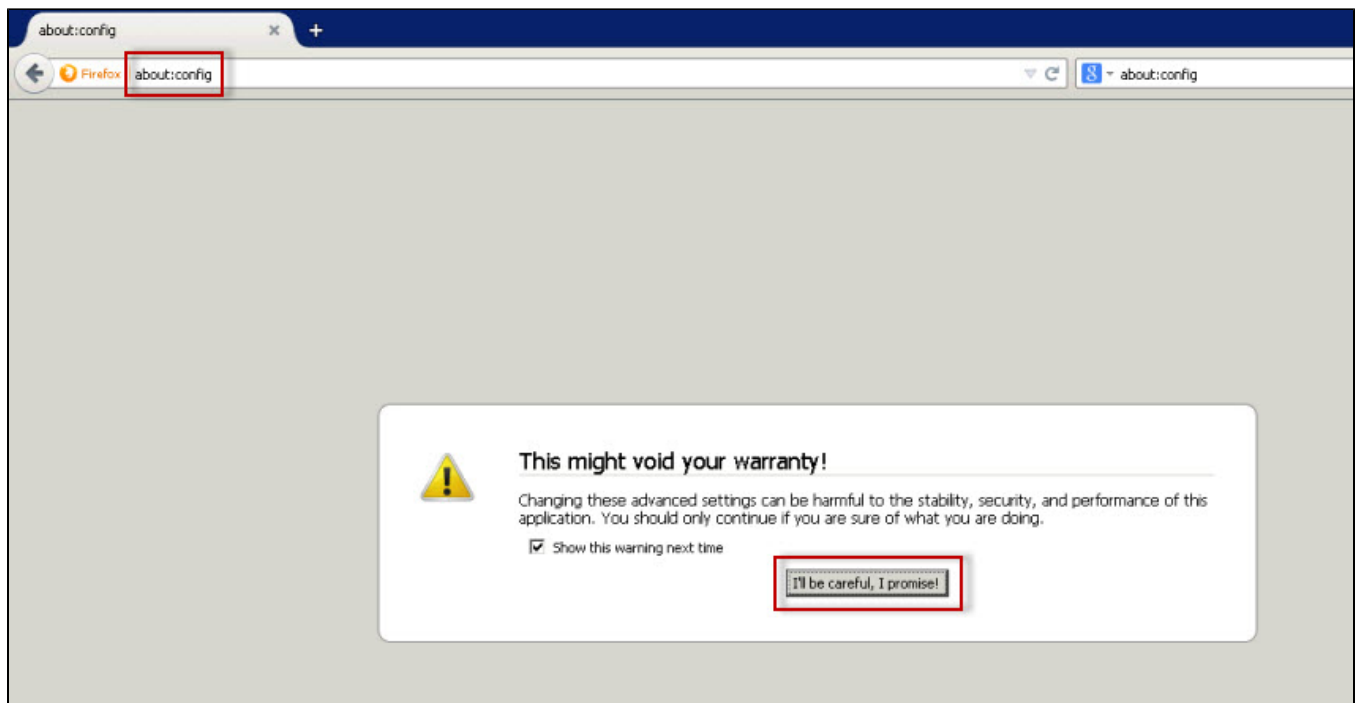


Configuring Google Chrome and Mozilla Firefox.

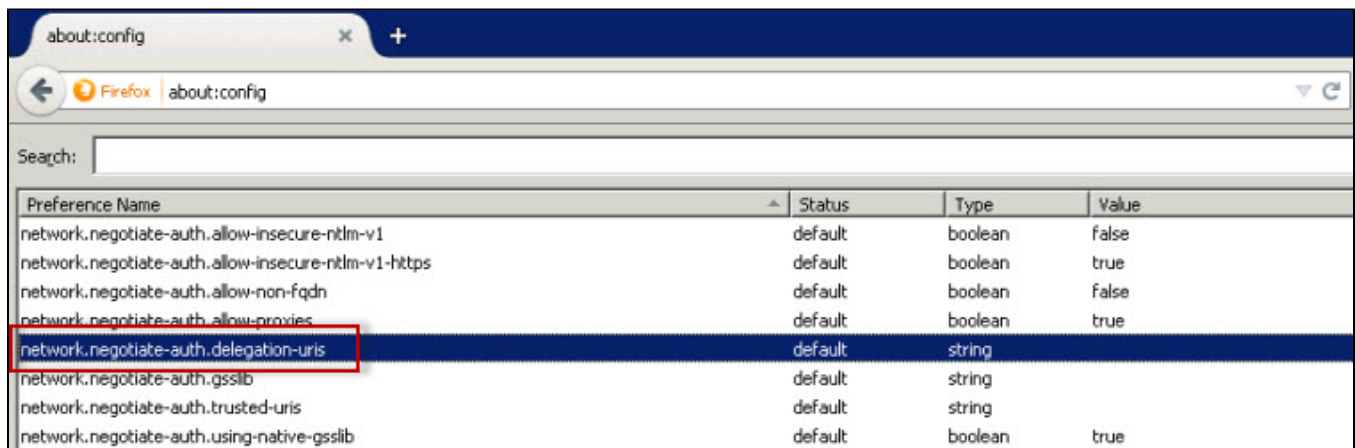
To configure **Google Chrome**, you can go to the following link: <http://dev.chromium.org/developers/design-documents/http-authentication>.

To configure **Mozilla Firefox**, view the following steps:

1. Open your Mozilla Firefox browser and type **about:config**.
2. Click **I'll be careful, I promise!**.

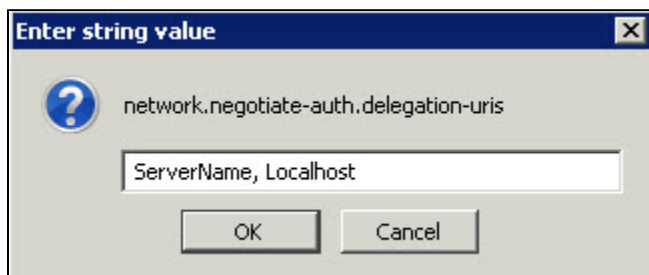


3. Search and double click **network.negotiate-auth.delegation-uris**

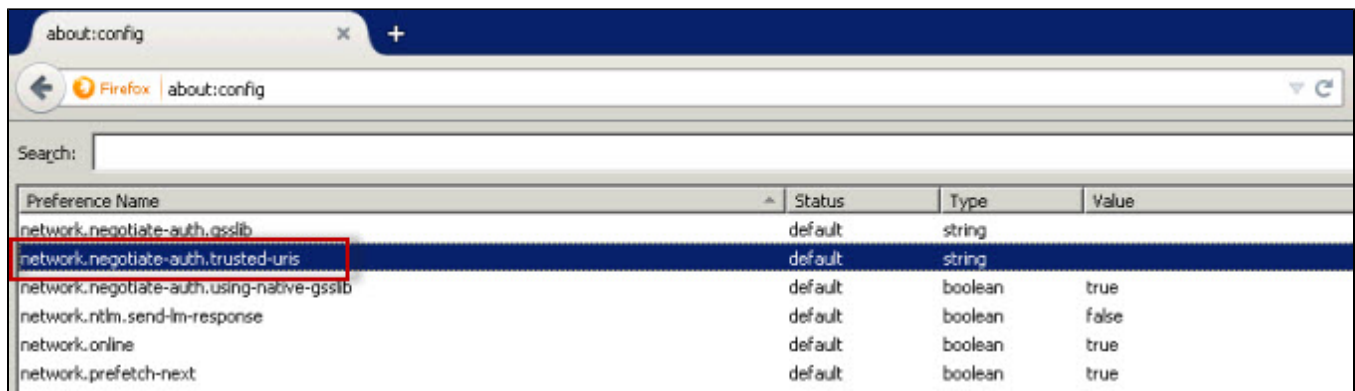


4. Type your server name and localhost.

5. Click **OK**.



6. Double click **network.negotiate-auth.trusted-uris**.



7. Type again your server name and localhost and click **OK**.

SQL **Enterprise Job Manager** monitors and manages your SQL Server agent jobs. [Learn more > >](#)

Idera Website	Products	Purchase	Support	Resources	Community	About Us	Legal
-------------------------------	--------------------------	--------------------------	-------------------------	---------------------------	---------------------------	--------------------------	-----------------------