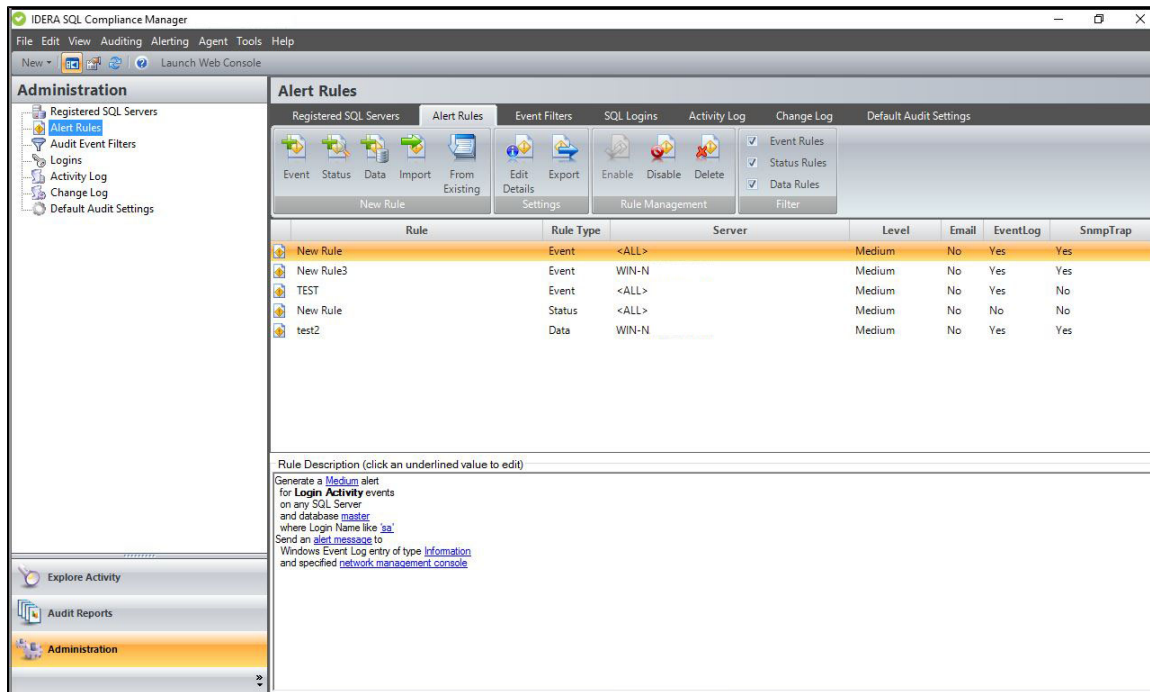


Alert Rules tab

The Alert Rules tab in IDERA SQL Compliance Manager tab allows you to create new alert rules and manage existing alert rules. An alert rule is a set of criteria that determines when an alert should be generated as the Collection Server processes SQL Server events collected from your audited instances. Use alert rules to detect events that occur on specific databases, users, or instances.



Available actions

View alert rule description

Use the **Rule Description** pane to quickly see which parameters are configured as criteria for this alert.

Set alert criteria

Use the links in the **Rule Description** pane to change the value or setting of a specific rule criterion. For more information, see [Specify Alert Criteria](#).

New Event Alert Rule

Allows you to create a new alert using the [New Event Alert Rule wizard](#). SQL Compliance Manager stores this alert rule in the Repository.

New Status Alert Rule

Allows you to create a new alert using the [New Status Alert Rule wizard](#). SQL Compliance Manager stores this alert rule in the Repository.

New Data Alert Rule

Allows you to create a new alert using the [New Data Alert Rule wizard](#). SQL Compliance Manager stores this alert rule in the Repository.

Import Rules

Allows you to import alert rules previously exported from another SQL Server instance. By default, the imported alert rules are disabled. For more information, see [Import your alert rules](#).

Create new alert rule from an existing rule

Allows you to create a new alert using the selected rule as a template. This action launches the New Alert Rule wizard, each window populated with alert criteria from the selected rule. You can change any alert criterion to meet the goals of your new alert rule. SQL Compliance Manager stores the new alert rule in the Repository. The selected rule remains unchanged. For more information, see [Use an alert rule as a template](#).

View Details

Allows you to view or change the alert criteria for the selected rule. For more information, see [View alerts](#).

Export Rules

Allows you to export all previously-created alert rules to an XML file. You can later use this file to import alert rules across multiple SQL Server instances, ensuring consistent alerting on activity throughout your environment. For more information, see [Export your alert rules](#).

Enable Alert Rule

Allows you to enable the selected rule. When an alert rule is enabled, SQL Compliance Manager processes audited events using the selected criteria in this rule. ***If an event matches the alert criteria and an alert action is configured***, SQL Compliance Manager writes an alert message to the application event log or email it to the specified addresses. Alert messages are also available using the Alerts tab. For more information, see [Enable an Alert](#).

Disable Alert Rule

Allows you to temporarily stop using the selected rule. SQL Compliance Manager no longer uses this alert rule when processing events. All alert messages previously generated by this rule will remain available through the Management Console and the application event log, if event log notification was configured. To reinstate this alert, enable the alert rule. For more information, see [Disable an Alert](#).

Delete

Allows you to permanently delete the selected rule. Deleting an alert rule removes the rule from the Repository. SQL Compliance Manager no longer uses this alert rule when processing events. All alert messages previously generated by this rule will remain available through the Management Console and the application event log, if event log notification was configured. ***If you want to temporarily stop using an alert rule***, disable the alert rule. For more information, see [Groom Alerts](#).

Refresh

Allows you to update the Alert Rules list with current data.

Available columns

Rule

Provides the name you specified when you created each alert rule. By default, SQL Compliance Manager names each new rule **New Rule**.

Rule Type

Indicates whether this rule generates an Event Alert or a Status Alert.

SQL Server

Provides the name of the registered SQL Server instance associated with this alert rule. By default, Event and Status Alerts apply to all registered SQL Server instances. For better focused Event Alerts, you can specify a different target SQL Server using the Edit Alert Rule wizard.

Level

Provides the alert level, such as High. Depending on the rule type, you can change the alert level using either the Edit Event Alert Rule or Edit Status Alert Rule wizard.

Email

Indicates whether the alert rule criteria includes email notification. When email notification is configured, SQL Compliance Manager sends an alert message to the specified addresses. Depending on the rule type, you can set up email notification using either the Edit Event Alert Rule or Edit Status Alert Rule wizard.

Event Log

Indicates whether the alert rule criteria includes event log notification. When event log notification is configured, SQL Compliance Manager writes an alert message to the application event log. Depending on the rule type, you can set up event log notification using either the Edit Event Alert Rule or Edit Status Alert Rule wizard.

[IDERA](#) | [Products](#) | [Purchase](#) | [Support](#) | [Community](#) | [Resources](#) | [About Us](#) | [Legal](#)