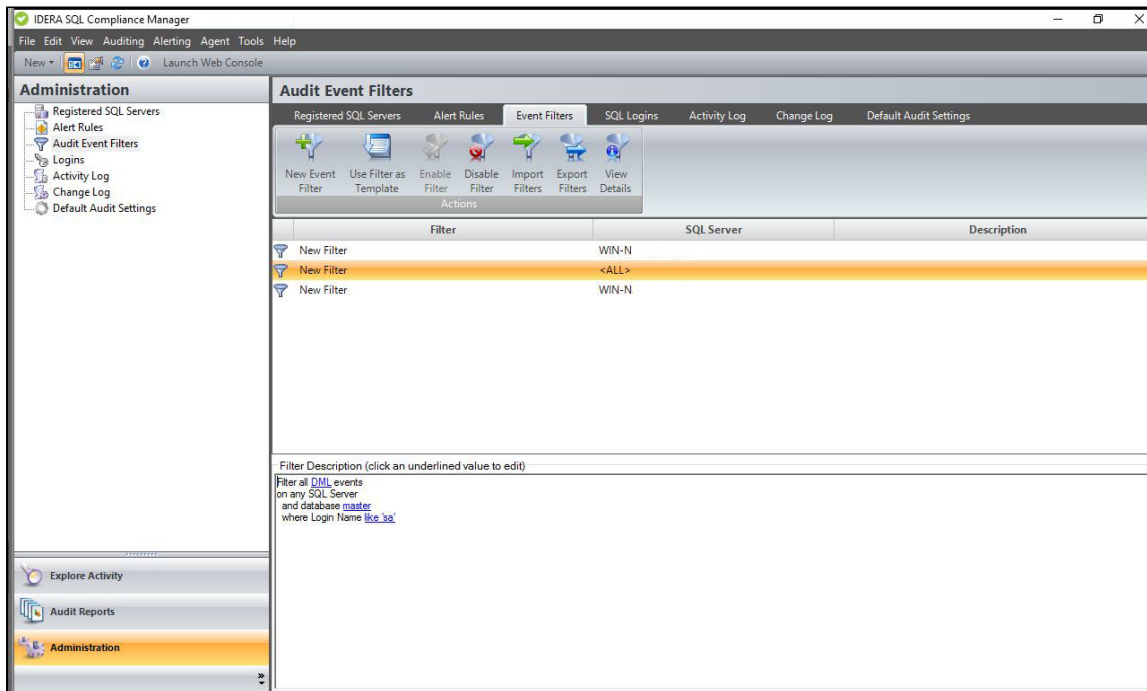


Event Filters tab

The Event Filters tab allows you to filter out specific SQL events in the audit data collected from the SQL Server instances and databases you are auditing. Use audit Event Filters to refine your audit data trail so that it contains only the events you need to track.



Available actions

Set filter criteria

Use the links in the **Filter Description** pane to change the value or setting of a specific filter criterion.

New Event Filter

Allows you to create a new event filter using the [New Event Filter wizard](#). IDERA SQL Compliance Manager stores this event filter in the Repository.

Use Filter as Template

Allows you to create a new event filter using the selected filter as a template. This action launches the New Event Filter wizard, each window populated with event criteria from the selected filter. You can change any event criterion to meet the goals of your new filter. SQL Compliance Manager stores the new event filter in the Repository. The selected filter remains unchanged. For more information, see [Use an Event Filter as a template](#).

Enable Filter

Allows you to enable the selected event filter. When an event filter is enabled, SQL Compliance Manager processes audited events using the selected criteria in this filter. **If an event matches the filter criteria**, SQL Compliance Manager removes the event from the audit data. Use the Audit Events tab to see the resultant set of processed events. For more information, see [Enable an Event Filter](#).

Disable Filter

Allows you to temporarily stop using the selected event filter. SQL Compliance Manager will no longer use this filter when processing events. All previously processed audit data stored in the Repository remains intact. To reinstate this filter, enable it. For more information, see [Disable an Event Filter](#).

Import Filters

Allows you to import Event Filters previously exported from another SQL Server instance. By default, the imported Event Filters are disabled. For more information, see [Import your Event Filters](#).

Export Filters

Allows you to export Event Filters created for this SQL Server instance to an XML file. You can later use this file to import Event Filters across multiple SQL Server instances, ensuring consistent filtering of specific events throughout your environment. For more information, see [Export your Event Filters](#).

View Details

Allows you to view or change the criteria for the selected filter. For more information, see [Change which audit data the filter excludes](#).

Delete

Allows you to permanently delete the selected event filter. This option removes the filter from the Repository. SQL Compliance Manager will no longer use this filter when processing events. All previously processed audit data stored in the Repository remains intact.

Refresh

Allows you to update the Audit Event Filters list with current data.

Available columns

Filter

Provides the name of the audit event filter. You can specify a new name when you create or edit an audit event filter.

SQL Server

Provides the name of the registered SQL Server instance for which audited events are excluded by this filter.

Description

Provides a brief description of the event filter. You can specify the filter description when you create or edit an event filter.