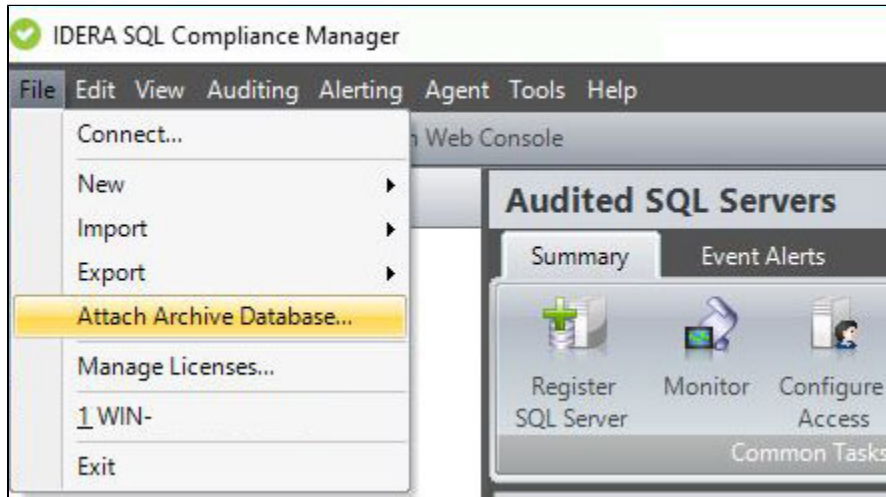


## Attach Archive Database window

The Attach Archive Database window allows you to open an archive database so you can view and report on previously collected audit data.



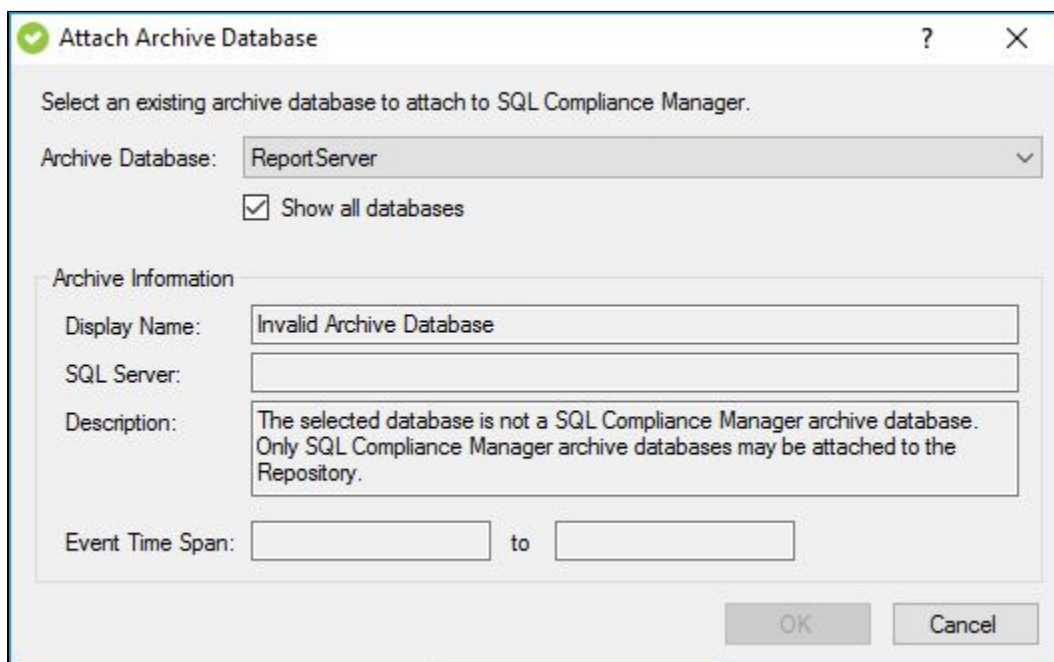
## Available fields

### Archive Database

Allows you to select which archive database you want to attach. To view all available databases on the registered SQL Server instances, click **Show all databases**.

### Archive Information

Provides general information about the archive database you selected, such as the name of the corresponding SQL Server instance and the last date the archive was updated.



[IDERA](#) | [Products](#) | [Purchase](#) | [Support](#) | [Community](#) | [Resources](#) | [About Us](#) | [Legal](#)