

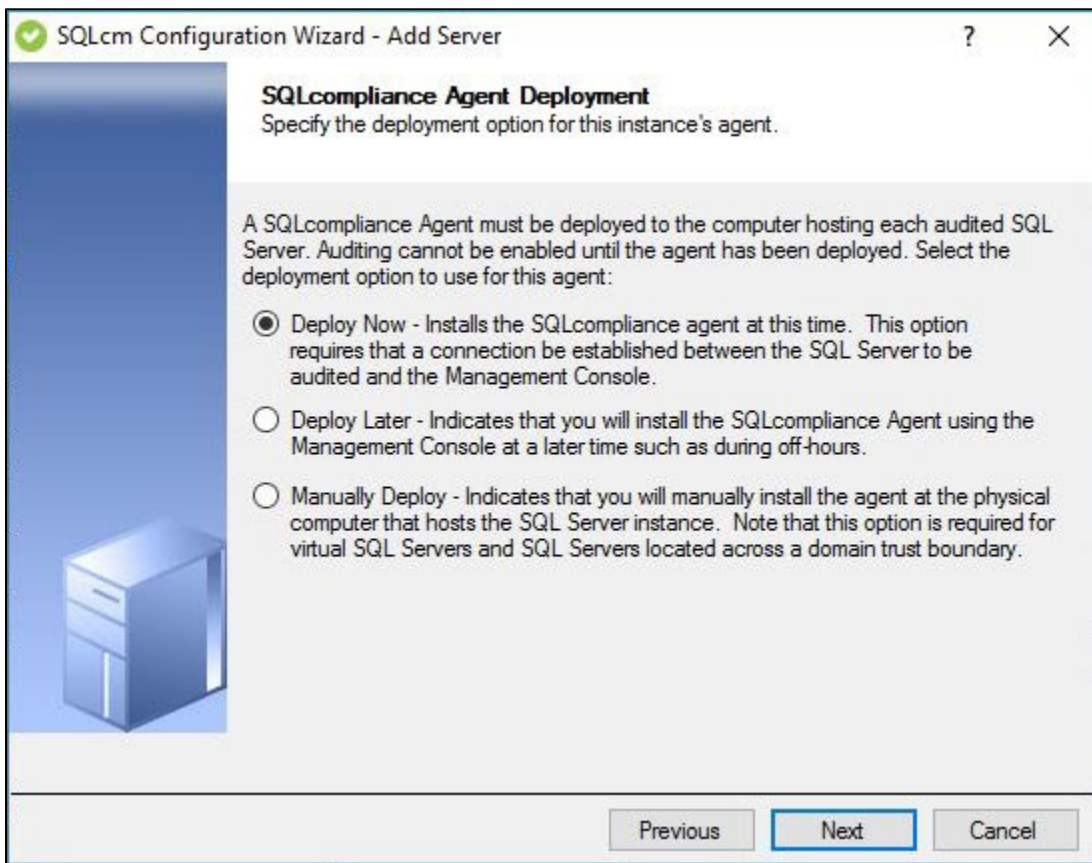
# Configuration wizard - SQL Compliance Manager Agent Deployment window

The SQL Compliance Manager Agent Deployment window of the Configuration wizard allows you to choose when and how you want to deploy the SQL Compliance Manager Agent to the target SQL Server instance. You can deploy the SQL Compliance Manager Agent now or later using the IDERA SQL Compliance Manager Management Console, or manually using the setup program.

**If you are auditing a virtual SQL Server**, you must manually deploy the SQL Compliance Manager Agent to each cluster node hosting the server. Use the Cluster Configuration Console to deploy and configure the SQL Compliance Manager Agent. For more information about installing and configuring the SQL Compliance Manager Agent for a virtual SQL Server, see [Deploy the SQL Compliance Agent to cluster nodes](#).

**If you are auditing a SQL Server instance hosted by a computer that belongs to a non-trusted domain or a workgroup**, you must manually deploy the SQL Compliance Manager Agent to the host computer using the SQL Compliance Manager setup program.

Choose the deployment option that is appropriate for your environment, and then click **Next**.



## Available fields

### Deploy Now

Installs the SQL Compliance Manager Agent when you complete the wizard. You must have a connection between the SQL Server that you want to audit and the Management Console.

### Deploy Later

Does not install the SQL Compliance Manager Agent. Select this option when you plan to install the SQL Compliance Manager Agent later using only the Management Console, such as installing during off-hours.

### Manually Deploy

Does not install the SQL Compliance Manager Agent. Select this option when you want to manually install the agent directly on the physical computer hosting the SQL Server instance. Note that this option is required for virtual SQL Server instances and instances located across a domain trust boundary.



To manually deploy the SQL Compliance Manager Agent, you need to install the agent using the [SQL Compliance Manager installer](#) or the [silent command](#) before starting the instance registration process.

#### Already Deployed

***Display only.*** Informs you that the SQL Compliance Manager Agent is already deployed on the computer hosting this SQL Server instance.

[IDERA](#) | [Products](#) | [Purchase](#) | [Support](#) | [Community](#) | [Resources](#) | [About Us](#) | [Legal](#)