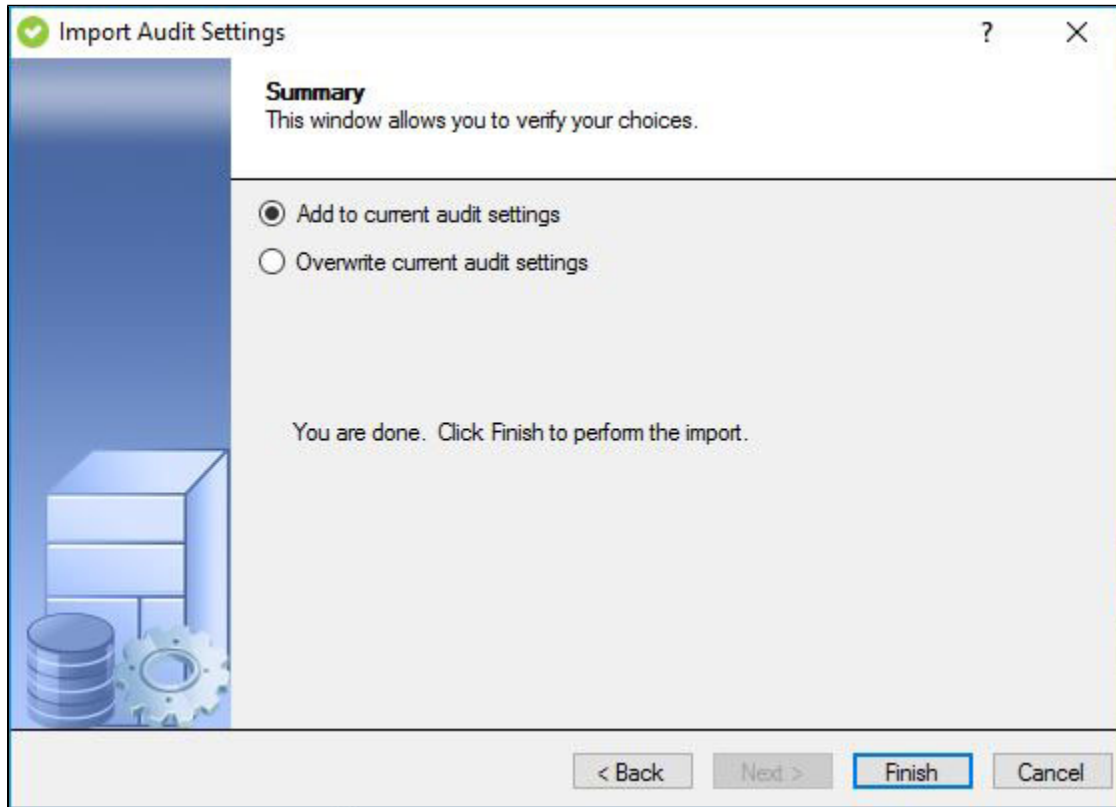


Import Audit Settings wizard - Summary window

The Summary window of the Import Audit Settings wizard allows you to choose whether to append or overwrite the existing audit settings for the target SQL Server instance or database.

To complete your import, click **Finish**. The Management Console updates the SQL Compliance Manager Agent at the next heartbeat.



Available actions

Add to current audit settings

Appends the existing audit settings the SQL Compliance Manager Agent is using to audit the target SQL Server instance or database with the settings you have chosen to import. The SQL Compliance Manager Agent will use the previous settings and the imported settings to collect events from this instance or database.

Overwrite current audit settings

Overwrites the existing audit settings the SQL Compliance Manager Agent is using to audit the target SQL Server instance or database with the settings you have chosen to import. The SQL Compliance Manager Agent will use only the imported settings to collect events from this instance or database.