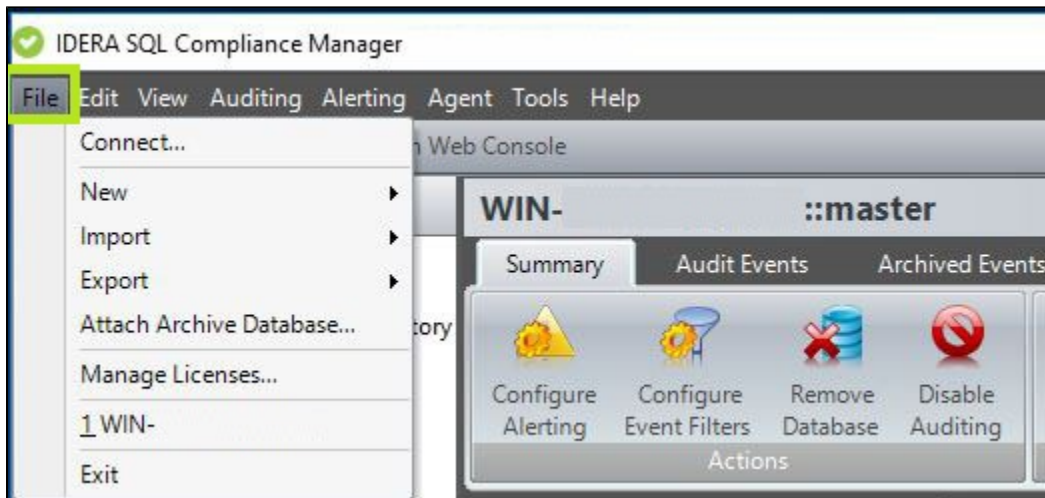


SQL Compliance Manager Menu - File

The File option from the SQL Compliance Manager Menu allows users perform a series of activities such as to add new SQL Servers, Databases or Logins. Users can perform quick Import or Export operations as well as to Manage their Product Licenses.



Available actions

Connect

The Connect to Repository window allows you to connect to a different installation of the IDERA SQL Compliance Manager Repository. You can type the name of the SQL Server instance that hosts the Repository databases or browse for the instance

New

Registered SQL Server - Starts the [New Registered SQL Server wizard](#), allowing you to enable and configure auditing on another SQL Server instance.

Audited Databases - Starts the New Audited Database wizard, allowing you to enable auditing on additional databases hosted by this SQL Server instance. For more information, see [Add Audited Databases](#).

SQL Server Login - Allows you to create a SQL Server login. SQL Compliance Manager creates this login at the SQL Server instance that hosts the Repository databases. For more information, see [Create a login](#).

Alert Rule - Allows you to create a new alert using the [New Event Alert Rule wizard](#). SQL Compliance Manager stores this alert rule in the Repository.

Event Filter - Allows you to create a new event filter using the [New Event Filter wizard](#). IDERA SQL Compliance Manager stores this event filter in the Repository.

Import

Audit settings - Allows you to import audit settings previously exported from another audited instance or database. For more information, see [Import your audit settings wizard](#).

Alert Rules - Allows you to import alert rules previously exported from another SQL Server instance. By default, the imported alert rules are disabled. For more information, see [Import your alert rules](#).

Event Filters - Allows you to import Event Filters previously exported from another SQL Server instance. By default, the imported Event Filters are disabled. For more information, see [Import your Event Filters](#).

Export

Audit settings - Allows you to export audit settings for this SQL Server instance to an XML file. This file includes audit settings configured at the server and database level. You can later use this file to import audit settings across multiple SQL Server instances, ensuring consistent auditing and compliance throughout your environment.

Alert Rules - Allows you to export all previously-created alert rules to an XML file. You can later use this file to import alert rules across multiple SQL Server instances, ensuring consistent alerting on activity throughout your environment. For more information, see [Export your alert rules](#).

Event Filters - Allows you to export Event Filters created for this SQL Server instance to an XML file. You can later use this file to import Event Filters across multiple SQL Server instances, ensuring consistent filtering of specific events throughout your environment. For more information, see [Export your Event Filters](#).

Attach Archive Database

The Attach Archive Database window allows you to open an archive database so you can view and report on previously collected audit data. For more information, see [Attach Archive Database window](#).

Manage Licenses

The Manage SQL Compliance Manager Licenses window allows you to view details about your IDERA SQL Compliance Manager product license.

Exit

Exits the SQL Compliance Manager Windows Console.