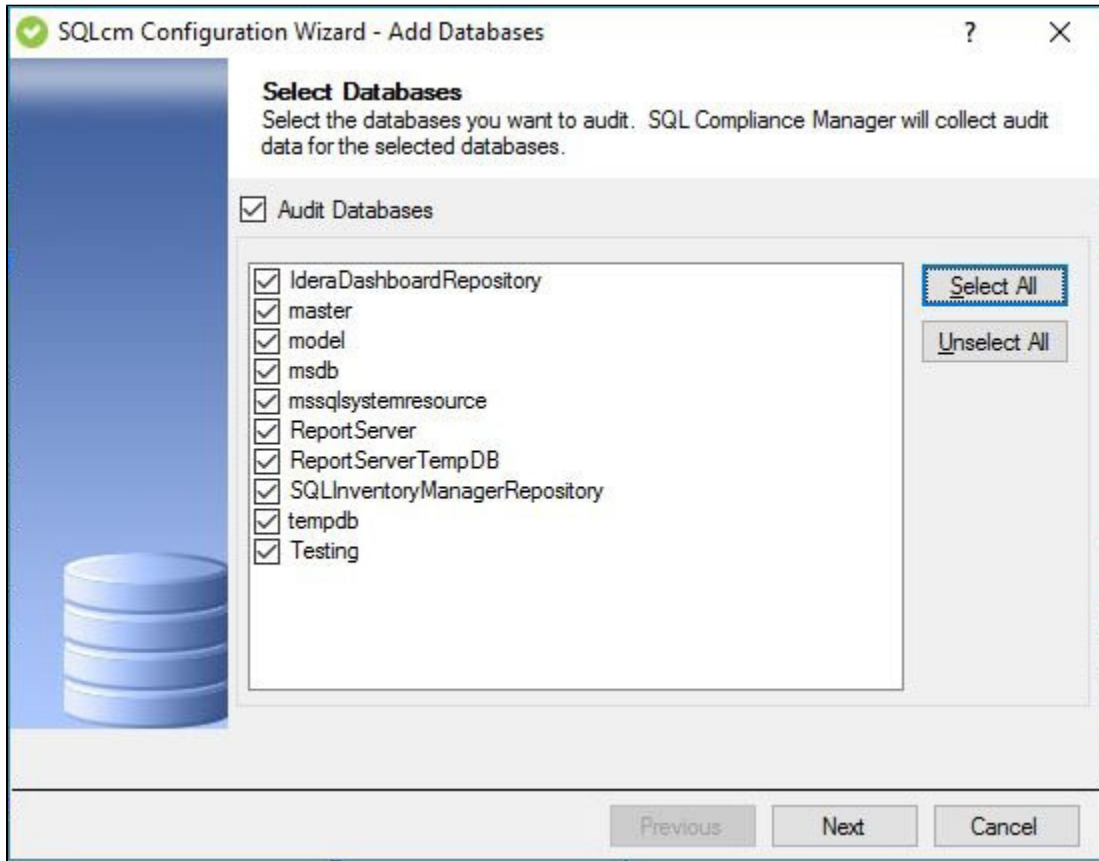


# Configuration wizard Add Audited Database - Add Databases window

The Add Databases window of the Configuration wizard allows you to select one or more user databases to audit. When you choose to audit a database, IDERA SQL Compliance Manager collects and processes SQL Server events on the database according to your audit settings.



## Available actions

### Audit Databases

Allows you to enable auditing by capturing SQL events at the database level. After you enable auditing on your databases, set up the audited database properties to enable more advanced auditing, such as [sensitive columns](#) and [before-and-after data](#) in tables.

### Select All

Selects all user databases.

### Unselect All

Clears all user database selections.

## Available fields

### User Databases

Allows you to choose target databases from a list of available databases hosted by this SQL Server instance. This list does not include databases you are currently auditing or databases on which you disabled auditing.

[IDERA](#) | [Products](#) | [Purchase](#) | [Support](#) | [Community](#) | [Resources](#) | [About Us](#) | [Legal](#)