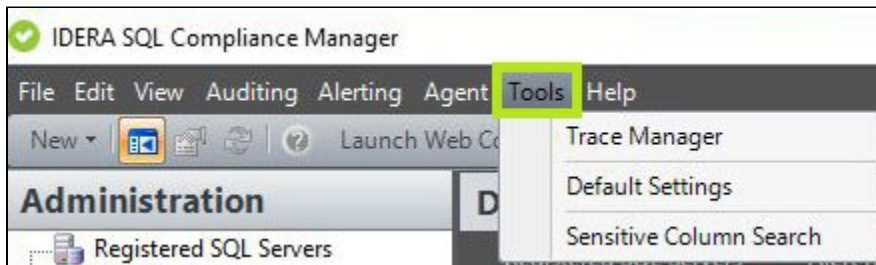


# SQL Compliance Manager Menu - Tools

Use the Tool option from the SQL Compliance Manager Menu to manage your Trace Files with the Trace Manager tool or set your desired Default Audit Settings.



## Available actions

### Trace Manager

Opens the Trace Manager window, where users are able to view, start or stop their Registered Traces and are also able to decompress their trace files. For more information on this tool, contact [Idera Support](#).

### Default Settings

Opens the Default Audit Settings tab in the Administration view, allowing users to customize their desired default audit settings and apply those settings to their audited Servers and Databases. For more information, see [Default Audit Settings](#).

### Sensitive Column Search

Allows you to search all of the tables and columns on a targeted database to help you identify potential sensitive data that needs to be audited. For more information, see [Sensitive Column Search window](#).