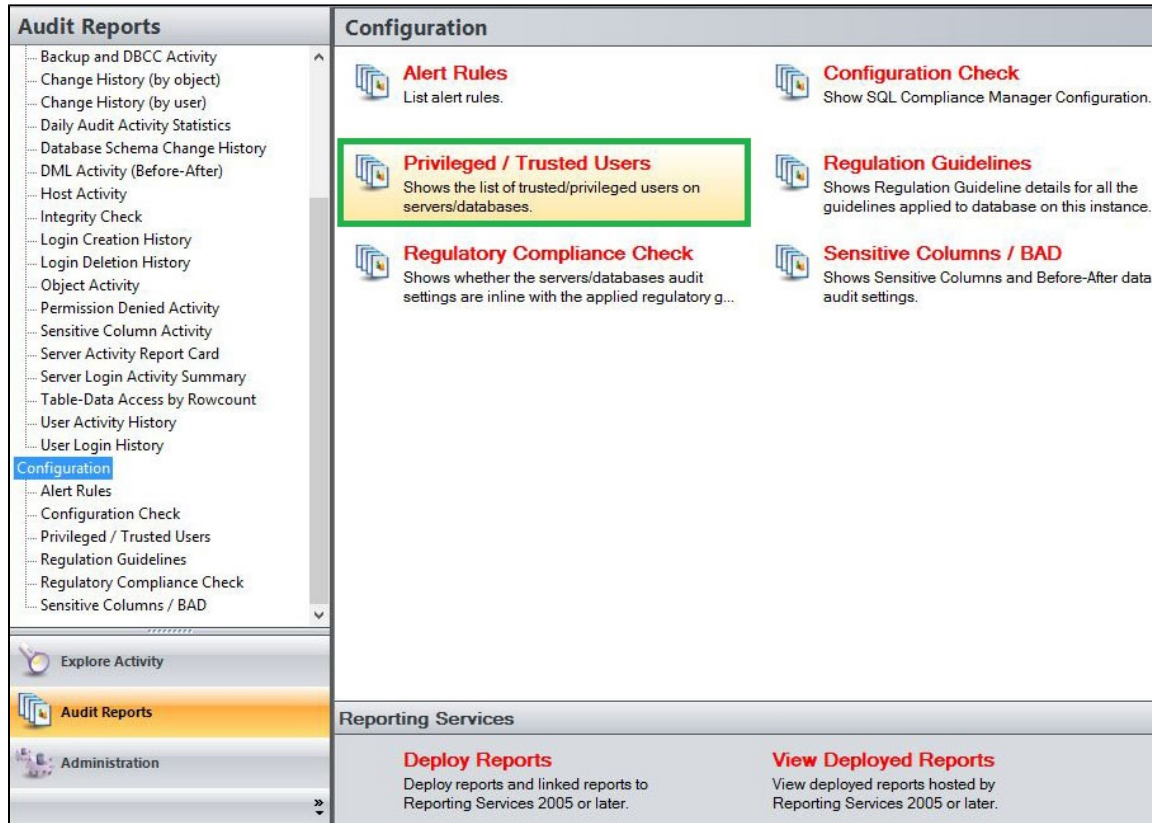


# Privileged/Trusted Users Report

The Privileged/Trusted Users report lists all trusted and privileged users set in each server instance and database. Use this report to monitor which Trusted and Privileged Users were set to during a snapshot in time.



A filter can include a list of wildcards, separated by commas, where a wildcard is a string, which may contain asterisks. The following parameters are specific to the selected report and enable you to filter the data to include in the report.

## Available actions

### Server Instance

Allows you to select a registered instance on which you want to report. Select **ALL** to report on all instances.

### Databases

Allows you to select or type the name of one or more databases on which you want to report.

### Login

Allows you to select the login from the drop down list of available logins. Select **ALL** to report on all logins.

### Role

Allows you to define the type of role for which you want this report to filter on. Select one of the Roles to filter the report on from the drop down menu option.

### User Type

Allows you to select the type of user for which you want this report to filter on. Select between the following options; Both, Trusted or Privileged.

## Default columns

**Logins/Roles**

The Logins/Roles column displays the name of the login or role.

**Server/Database**

The Server/Database column displays the name of the server or database.

Privileged / Trusted Users

Server Instance:

<ALL>

Database:

\*

Login:

<ALL>

Role:

<ALL>


User Type:

Both

Run Report

1 of 1

100%

 SQL Compliance Manager™

Trusted User / Privileged User Report

Server Instance:

<ALL>

Database:

All Databases

Login:

<ALL>

Role:

<ALL>

User Type:

Both

Logins/Roles

Server/Database