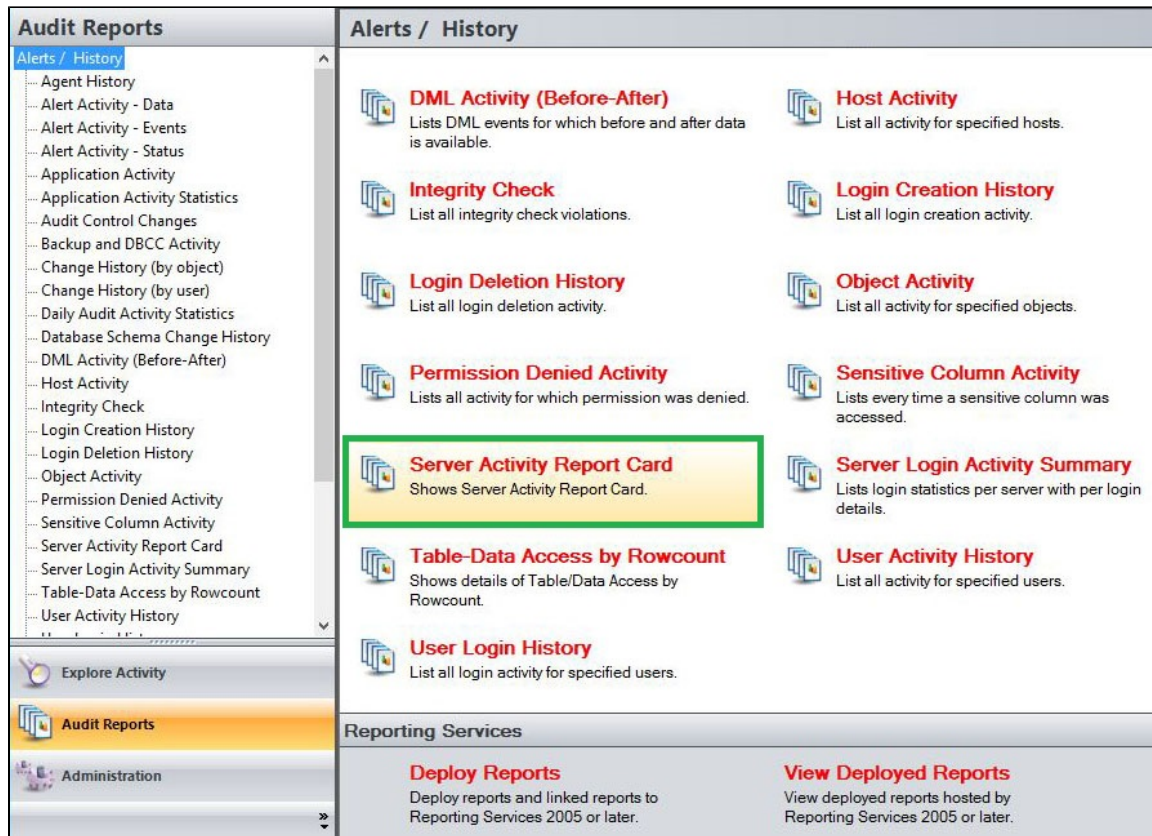


Server Activity Report Card Report

The Server Activity Report Card report allows you to review the activity status and recent audit event history on your SQL Server instance. Use this report to display a particular server's activity status to help determine whether you are effectively auditing events in your environment.



A filter can include a list of wildcards, separated by commas, where a wildcard is a string, which may contain asterisks. The following parameters are specific to the selected report and enable you to filter the data to include in the report.

Available actions

Server Instance

Allows you to select a registered instance on which you want to report. Select **ALL** to report on all instances.

Databases

Allows you to select or type the name of one or more databases on which you want to report.

Start Date

Allows you to select the start date for the range from which you want to report.

End Date

Allows you to select the end date for the range from which you want to report.

Start Time - Hour

Allows you to select the exact starting hour of the day for the range from which you want to report.

Start Time - Min

Allows you to select the exact starting minute of the day for the range from which you want to report.

Start Time - AM/PM

Select between AM or PM from the drop down list to configure the Start Time for Each Day range from which you want to report.

End Time - Hour

Allows you to select the exact ending hour of the day for the range from which you want to report.

End Time - Min

Allows you to select the exact ending minute of the day for the range from which you want to report.

End Time - AM/PM

Select between AM or PM from the drop down list to configure the End Time for Each Day range from which you want to report.

Server Activity

Allows you to filter the report by a specific server activity. Select a server activity from the drop down menu to filter the report on.

Category

Allows you to select the category type on which you want to report. Select a category type from the drop down menu to filter the report on.

Event

Allows you to type the name of one or more events on which you want to report.

Run Report

Click this button to Run the report.

Default columns

Server Instance

The Server Instance column displays the name of the Instance Server where the event was captured.

Database

The Database column displays the name of the database where the event was captured.

Category

The Category column indicates the category type of the event captured.

Event

The Event column indicates the type of event captured.

Time

The Time column displays the date and time when the event was captured.


Details

The Details column provides details of the captured event.

Server Activity Report Card

Server Instance:		<ALL>	
Database:		*	
Start Date:	10/ 8/2019	End Date:	10/15/2019
Start Time for Each Day		End Time for Each Day	
Start Time - Hour:	12	End Time - Hour:	11
Start Time - Min:	00	End Time - Min:	59
Start Time - AM/PM:	AM	End Time - AM/PM:	PM
Server Activity:	Overall Activity	Category:	<ALL>
Event:		*	

1 of 1
100%


SQL Compliance Manager™

Server Activity Report Card

From 10/8/2019 to 10/15/2019
From 12:00 AM to 11:59 PM

Server Instance:	<ALL>
Database:	All Databases
Server Activity:	Overall Activity
Category:	All Categories

Event: All Events