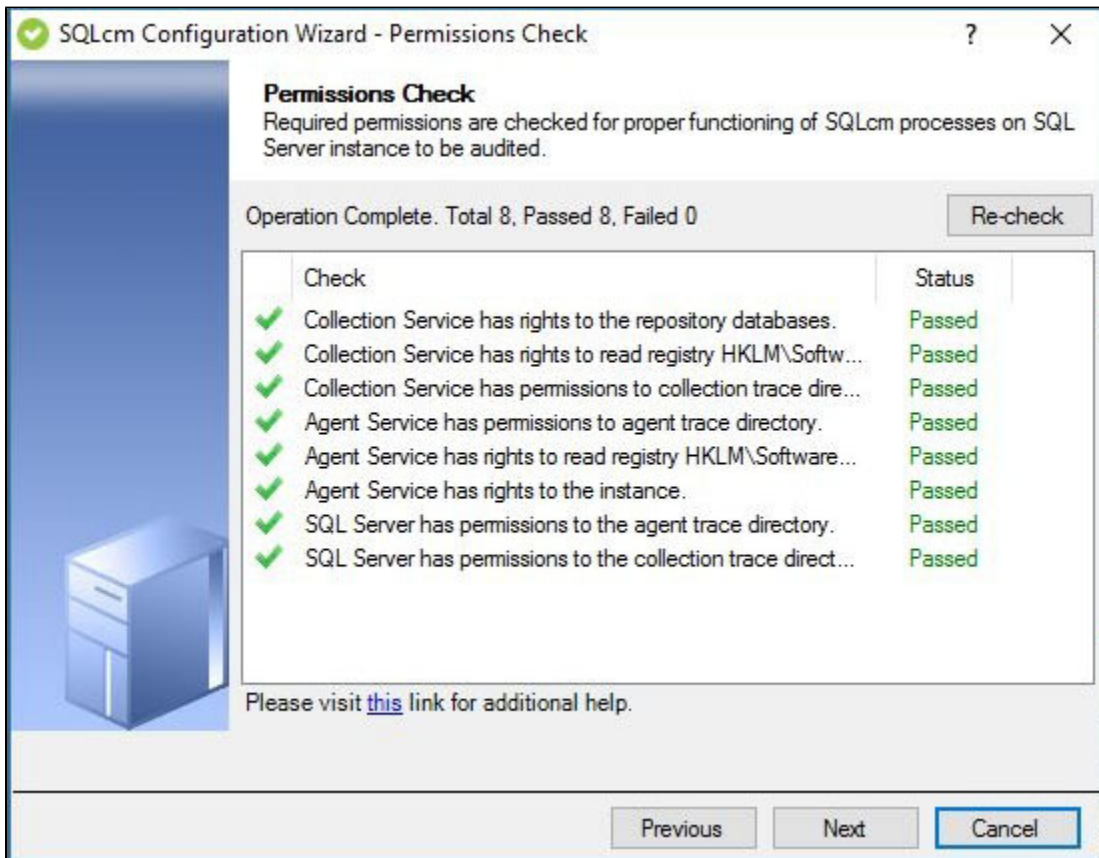


Configuration wizard Apply Regulation - Permissions Check window

The Permissions Check window of the Configuration wizard displays the results of a check of the permissions required by IDERA SQL Compliance Manager on the SQL Server instance you want to monitor. This check runs automatically each time you register a new instance.



If the check fails, review the issue, make the required change to the target SQL Server instance, and then click **Re-check**. Once the check is complete, click **Next** to continue.

Required permissions include:

- Collection Service must have rights to the Repository databases
- Collection Service must have rights to read the registry at HKEY_LOCAL_MACHINE\Software\Idera\SQLcompliance
- Collection Service must have permissions to the collection trace directory
- Agent Service must have permissions to the agent trace directory
- Agent Service must have rights to read the registry at HKEY_LOCAL_MACHINE\Software\Idera\SQLcompliance
- Agent Service must have rights to the SQL Server instance
- SQL Server must have permissions to the agent trace directory
- SQL Server must have permissions to the collection trace directory



You can make changes to the registry at HKEY_LOCAL_MACHINE\Software\Idera\SQLcompliance to update permissions for your services. for more information about the registry key, see [Manage the registry key](#).



To successfully run and pass the Permissions Check, make sure you are logged in as one of the following users while registering an instance:

- SQL Compliance Agent Service User
- SQL Server Service User
- Current Logged-in User

For more information, see SQL Compliance Manager [Permissions Requirements](#).

Available actions

Re-check

Allows you to re-check the required permissions after making an update to the target SQL Server instance in case the preliminary check fails.

Available fields

Progress

Displays an icon that shows whether the check is in progress, passed or failed.

Check

Displays the list of permissions checked in this step.

Status

Displays the current status of the associated check. All checks display **Waiting** until run.

[IDERA](#) | [Products](#) | [Purchase](#) | [Support](#) | [Community](#) | [Resources](#) | [About Us](#) | [Legal](#)