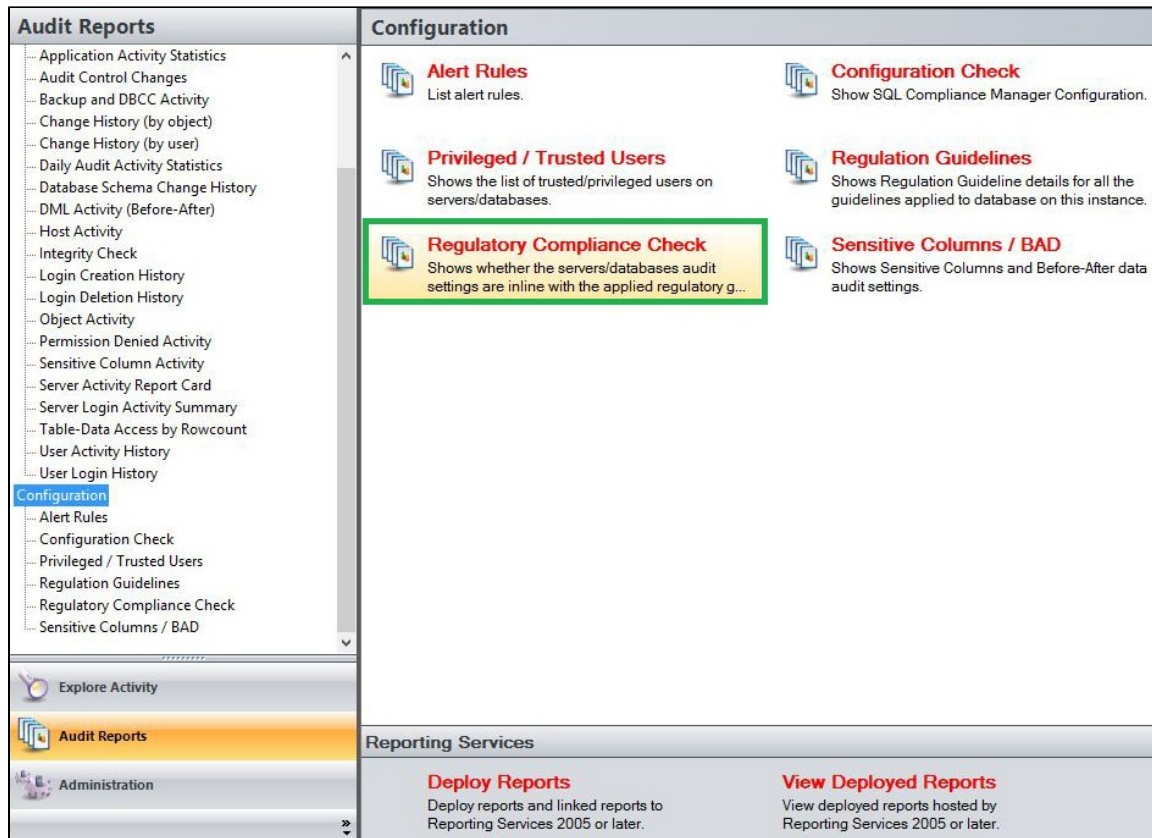


Regulatory Compliance Check Report

The Regulatory Compliance Check Report shows whether the selected servers/databases audit settings are inline with the applied regulatory guidelines. Use this report to ensure that your servers and databases continue to be in compliance with the selected regulatory guidelines.



Available actions

Server Instance

Allows you to select a registered instance on which you want to report. Select ALL to report on all instances.

Database

Allows you to select or type the name of one or more databases on which you want to report.

Audit Settings

Allows you to filter the report by specific audit settings. Select an audit setting from the drop down menu option, or select **ALL** to report on all audit settings.

Values

Allows you to filter based on the values of the audit settings. Select between the following options; Selected, Varies, Deselected or N /A.

Regulatory Guideline

Allows you to filter the report by a specific regulation guideline. Select a regulation guideline from the drop down menu option, or select **ALL** to report on all regulatory guidelines.

Run Report

Click this button to Run the report.

Default columns

Server Events

The Server Events column displays the name of the Server event.

CIS

The CIS column indicates whether the this regulation guideline is applied or not to the each database in a server.

DISA STIG

The DISA column indicates whether the this regulation guideline is applied or not to the each database in a server.

FERPA

The FERPA column indicates whether the this regulation guideline is applied or not to the each database in a server.

GDPR

The GDPR column indicates whether the this regulation guideline is applied or not to the each database in a server.

HIPAA

The HIPAA column indicates whether the this regulation guideline is applied or not to the each database in a server.

NERC

The NERC column indicates whether the this regulation guideline is applied or not to the each database in a server.

PCIDSS

The PCI column indicates whether the this regulation guideline is applied or not to the each database in a server.

SOX

The SOX column indicates whether the this regulation guideline is applied or not to the each database in a server.

Regulatory Compliance Check

Server Instance: <ALL>

Database: <ALL>

Regulatory Guidelines: <ALL>

Audit Settings: <ALL>

Values: Selected

Run Report

1 of 11

100%

SQL Compliance Manager™

Regulatory Compliance Check

From 6/19/2019 6:22:40 PM to 10/15/2019 1:02:34 PM

Server Instance: <ALL>

Database: <ALL>

Regulatory Guidelines: <ALL>

Audit Settings: <ALL>

Values: Selected

Red color event indicates Regulatory Guideline event has been changed from recommended settings

Server Instance: EREVOLLO-DV09

Server Events

CIS

DISASTIG

FERPA

GDPR

HIPAA

NERC

PCIDSS

SOX

[IDERA](#) | [Products](#) | [Purchase](#) | [Support](#) | [Community](#) | [Resources](#) | [About Us](#) | [Legal](#)