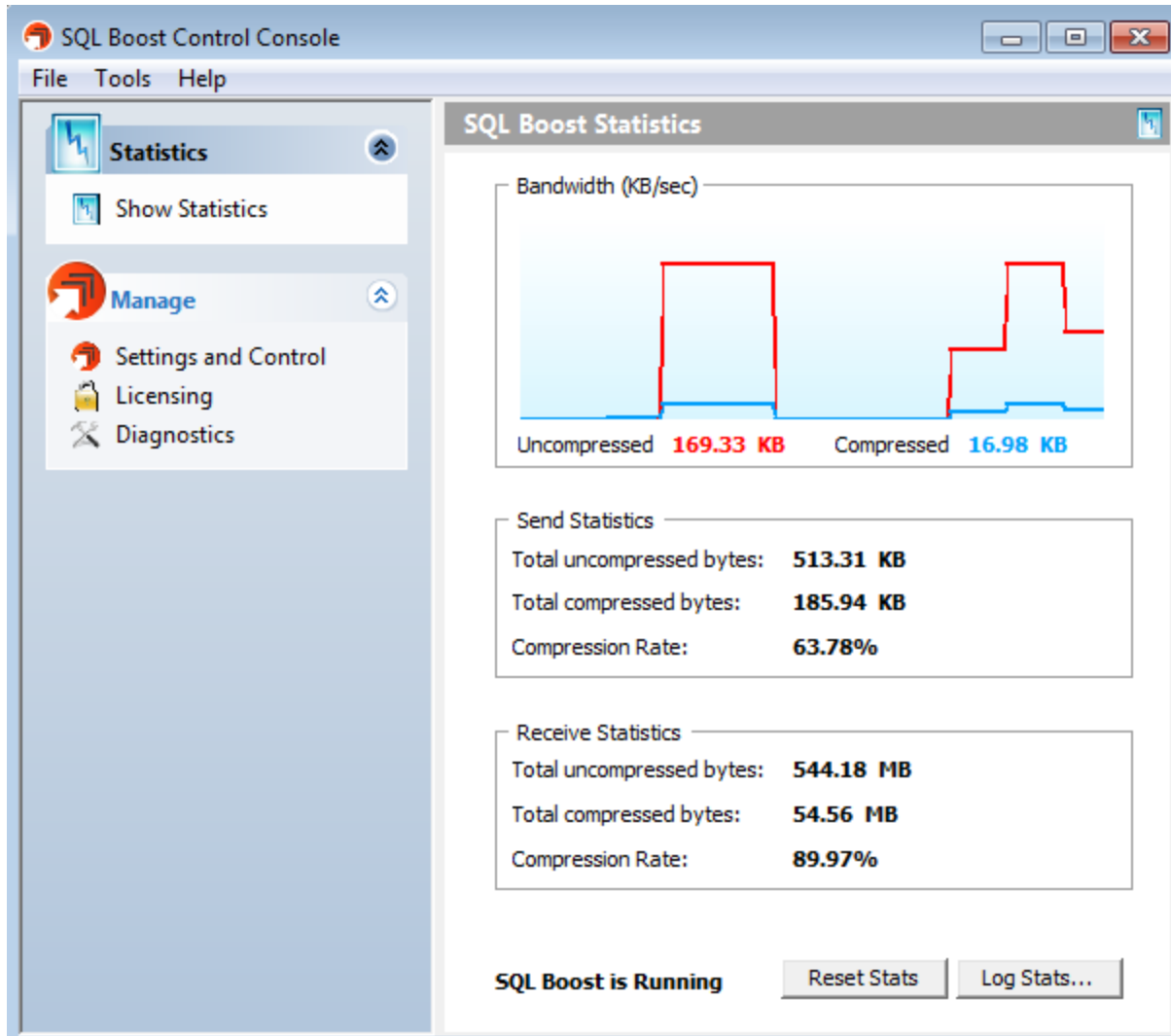


Access the SQL Boost Control Console

After installing SQL Boost, you can launch the SQL Boost Control Console by double-clicking the icon in the system tray or by right-clicking the icon, and then selecting **Open SQL Boost Control Console**. The Console appears and shown in the following image.



Automatically start SQL Boost

By default, the **Auto start SQL Boost at system startup** box is checked to make sure you collect statistics while your system is in use. You can disable this feature in the SQL Boost Settings and Control window by clearing the checkbox.

Need more help? [Search the IDERA Customer Support Portal](#)

IDERA Website	Products	Purchase	Support	Community	About Us	Resources	Legal
-------------------------------	--------------------------	--------------------------	-------------------------	---------------------------	--------------------------	---------------------------	-----------------------

