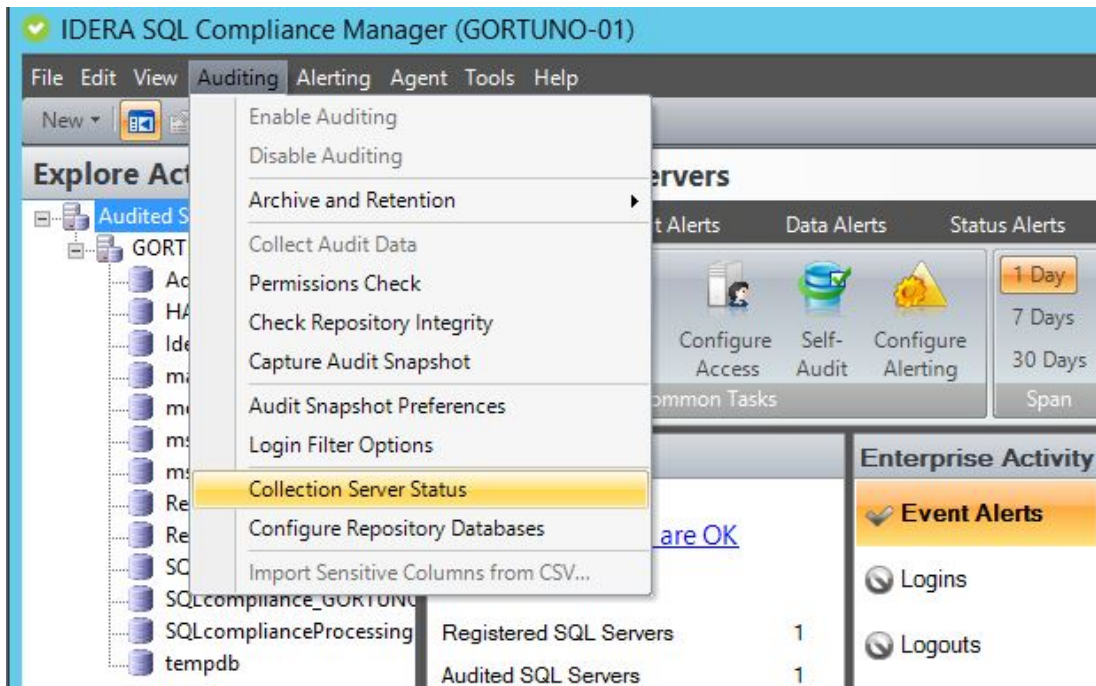


# Collection Server Properties window

The Collection Server Properties window allows you to review the basic properties and status of the Collection Server. You can review the following items:

- Whether the Collection Server is available (up and running)
- Official status
- Name of the computer that hosts the Collection Server
- Port the Collection Server is using to communicate with the Management Console and the SQL Compliance Manager Agent
- Version of Collection Server software (should be the same as the IDERA SQL Compliance Manager build and version number)
- Date and time the last heartbeat was received from the SQL Compliance Manager Agent
- Logging levels set at the Collection Server and the SQL Compliance Manager Agent
- Collection Server heartbeat interval
- Location of trace file directory



## Available actions

### Change Collection Server log level

Allows you to select the logging level at which the Collection Server writes events to the Application log on the host computer.

### Change heartbeat interval

Allows you to specify the interval (in minutes) at which the Collection Service processes any status alerts associated with the Collection Server. These alerts are written to the Repository. It also manages any SQL CM maintenance activities, such as re-indexing the Repository databases. By default, the heartbeat interval is five minutes.



## NOTE

During the heartbeat, the Collection Service requests a list of the Database Names and ID's in order to update the table stored in the event database.

### Start Service

Allows you to restart the Collection Service from the Management Console. Use this feature if the Collection Service has stopped running on the Collection Server computer and requires a manual restart.

### Stop Service

Allows you to stop the Collection Service from the Management Console. You can use this feature to stop the Collection Service currently running on the Collection Server computer.

### Refresh Status

Allows you to refresh the status fields with the most recent data from the Collection Server.

**Collection Server Status**

Collection Server

Status: OK

Machine: GORTUNO-01

Port: 5201

Version: 5.6.0.72

Core version: 5.6.0.72

Last server heartbeat: 12/20/2018 2:09 PM

SQLCompliance Agent Activity Log Level: Normal

Collection Server Log Level: Normal

Heartbeat interval (min): 5

Trace file directory: C:\Program Files\IDERA\SQLCompliance\CollectionServerTraceFiles

**Collection Server is up.**

Refresh Status

Collection Server Service Control

Start Service Stop Service

OK Cancel

**SQL Compliance Manager** monitor, audit and alert on SQL user activity and data changes.

[IDERA](#) | [Products](#) | [Purchase](#) | [Support](#) | [Community](#) | [Resources](#) | [About Us](#) | [Legal](#)