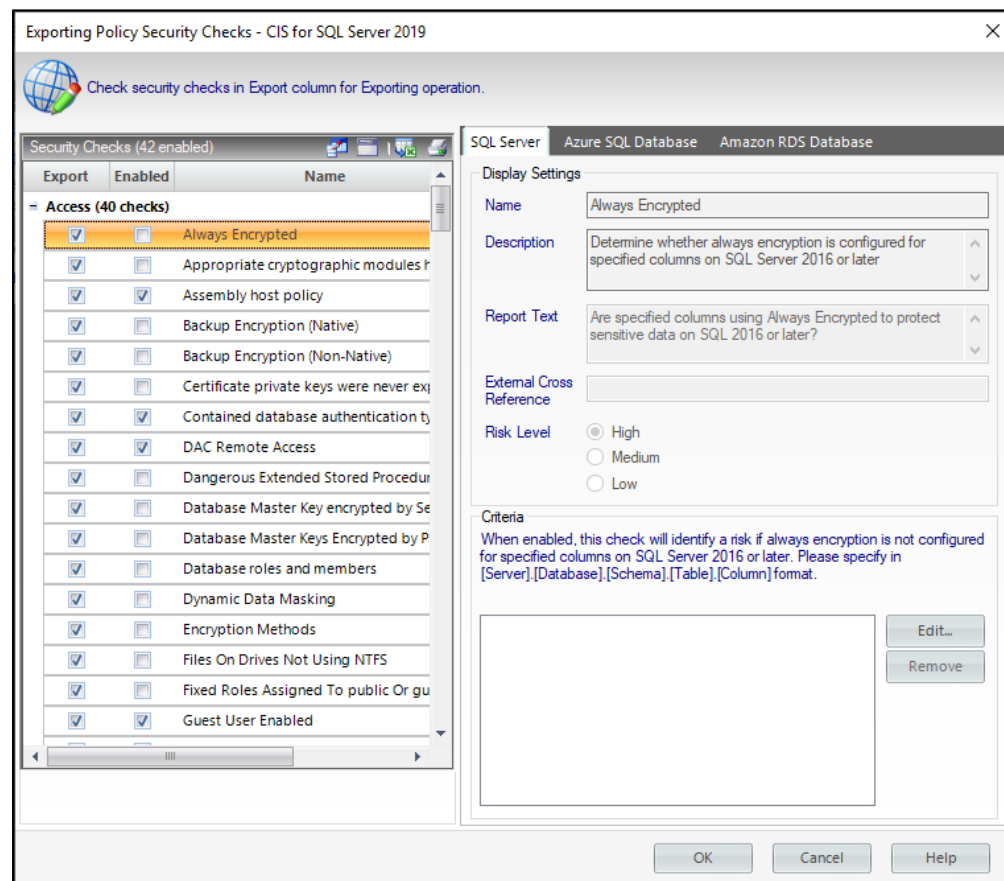


Export policies

The **Export Policy** window allows you to save the currently selected policy as a template to base other policies on.



To export your policy you can follow these steps:

1. Select **Export Policy** from the **Summary** tab on the **Security Summary** view, or select your policy from the Policies tree in the **Security Summary** view and Right-click to select **Export Policy**.
2. SQL Secure opens the **Exporting Policy Security Checks** window where you can review which checks are enabled in your selected policy and which ones are selected for exporting. Edit the security checks you want to export in the Export column. Take into account that you cannot edit the settings of any security check. Click **OK**.
3. Browse to the desired location you want to store your policy template, type a file name, and click **Save**.

[IDERA](#) | [Products](#) | [Purchase](#) | [Support](#) | [Community](#) | [Resources](#) | [About Us](#) | [Legal](#)