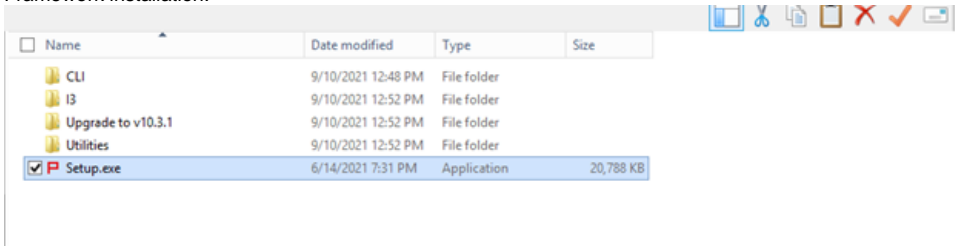


Precise framework installation

Before installing the Precise framework, see [Precise requirements for installation](#).

To install the Precise framework

1. Download the following zip file for the appropriate Precise version:
Precise x.x.x from <https://downloadfiles.idera.com/products/Precise.zip/>
2. Unzip the downloaded files for Precise x.x.x into an empty folder. We recommend that you keep the Precise x.x.x download available for use after finishing the Precise installation.
3. On a Windows server, open the folder containing the unzipped Precise x.x.x files.
4. Open the Precise x.x.x folder, and then double-click **setup.exe**. The Precise Framework installer appears to guide you through the Precise Framework installation.

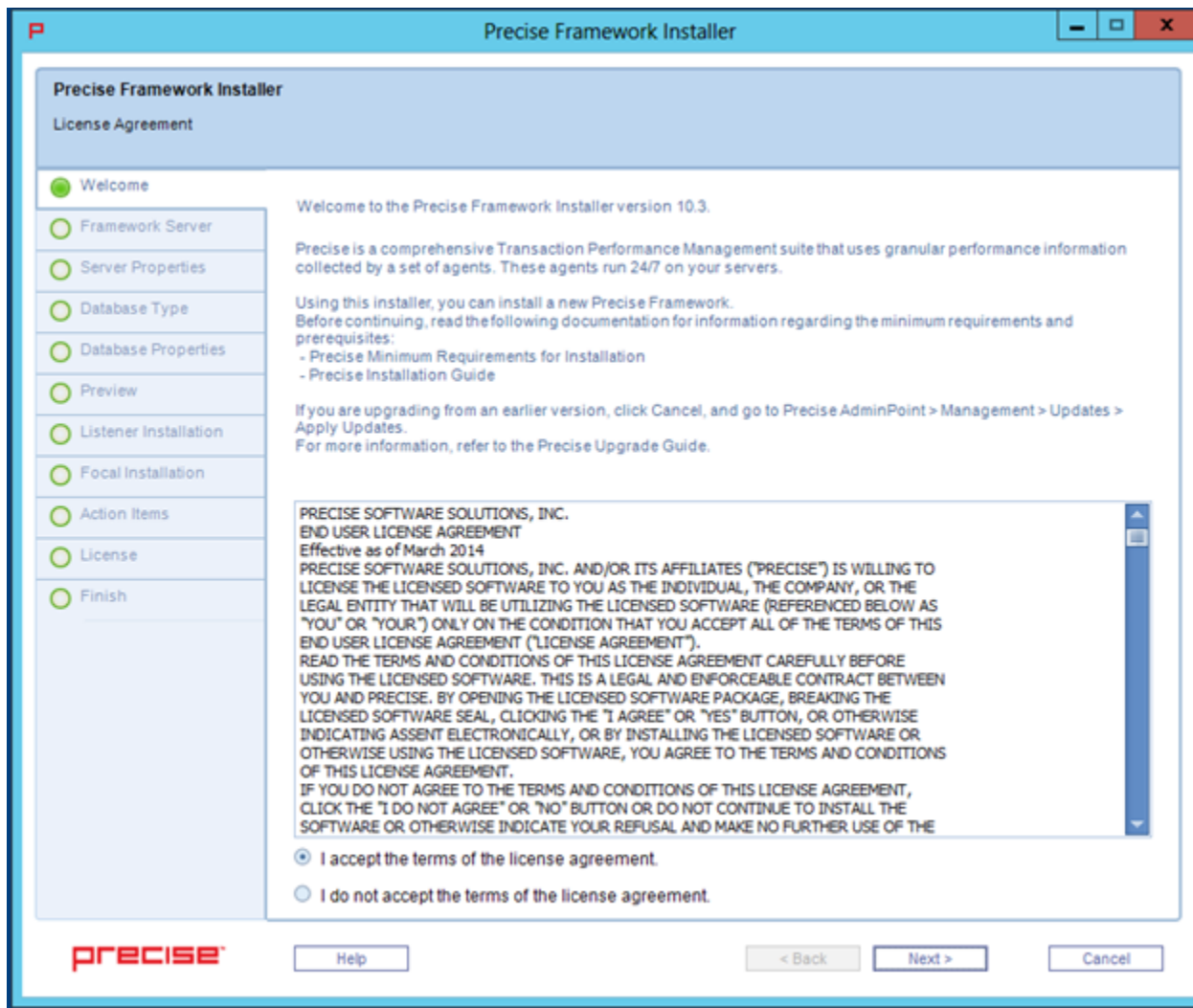


The Precise framework installer displays a series of screens, most of which require you to input details regarding your information systems. Below is the Framework installation procedure and a brief explanation of the requested input on each screen. It is recommended to compile a list of all required user inputs based on this section before continuing.

- [Welcome](#)
- [Framework Server](#)
- [Server Properties](#)
- [Database Type](#)
- [Preview](#)
- [License](#)
- [Finished](#)
- [Launching the Precise framework URL](#)

Welcome

The Welcome tab is the first to appear in the installation process and provides the End User License Agreement for you to review and accept.



To complete the Welcome screen

1. Click **I accept the terms of the license agreement.**
2. Click **Next**. The Framework Server screen appears.

Framework Server

The Framework Server tab allows you to select details about the server on which you want to install the Precise framework.

The screenshot shows the 'Precise Framework Installer' window with the 'Framework Installation' tab selected. The 'Framework Server' step is active, indicated by a green circle in the left-hand navigation pane. The main area contains the instruction 'Specify the server you want to install the Precise Framework on.' Below this, there are two fields: 'Server Name or IP Address:' with the text 'win12-sql' entered, and 'Server Type:' with a drop-down menu showing 'Windows' and 'UNIX' options. At the bottom of the window, there is a 'precise' logo, a 'Help' button, and three navigation buttons: '< Back', 'Next >', and 'Cancel'.

To complete the Framework Server screen

1. In **Server Name or IP Address**, type the name or IP address of the server on which you want to install the Precise framework.
2. In **Server Type**, use the drop-down list to select the operating system type for the server, whether **Windows** or **UNIX**.
3. Click **Next**.

Server Properties

The content of the Server Properties tab varies based on the server type selected in the previous screen. This example uses a Microsoft Windows server installation.

Framework installation on a Windows Server

The Precise framework is created for an automatic or manual installation.

i Select **Manual Installation** only in the event that you have a Windows server that does not allow remote installation or if you encounter issues during the automatic Windows server installation. For more information, see the next set of installation steps.

To install the Precise framework on a Windows server using automatic installation

1. Select **Automatic Installation**.
 - a. *If you want to use the credentials of the user account currently accessing the server:*
 - i. Select **Use Current Credentials**.
 - ii. Select an installation folder by clicking the browse button (...), and then searching for the appropriate destination.

i If you need to change Precise listener or GUI port numbers, click **Advanced**, and then complete the appropriate fields in the Advanced window. For more information about this window, see [About the Advanced window](#).

- b. *If you want to use a different user account with administrator permissions:*
 - i. Select **Change Credentials**.
 - ii. Complete the following fields:
 1. **User Name**
 2. **Password**
 3. **Domain**
 - iii. Select an installation folder by clicking the browse button (...), and then searching for the appropriate destination.

i If you need to change Precise listener or GUI port numbers, click **Advanced**, and then complete the appropriate fields in the Advanced window. For more information about this window, see [About the Advanced window](#).

2. Click **Next**.

To install the Precise framework on a Windows server using manual installation

1. Select **Manual Installation**.
2. Click **Next**.


For more information about manually installing the Precise framework on your server, see [Adding a Windows server using manual mode](#).

About the Advanced window

The Advanced window shows you which ports Precise uses. These ports are bi-directional.

The screenshot shows a window titled "Advanced" with a blue header bar. Below the header, there's a section titled "Advanced" in a light blue box. The main content area has a light gray background. It starts with a blue informational text: "You may configure the Precise Listener to listen to a different port than the default." Below this is a text input field labeled "Precise Listener Port" with the value "20702". Another blue informational text follows: "You may configure the Precise GUI Web server to listen to different ports than the default." Below this are two text input fields: "GUI Port Number" with the value "20790" and "GUI Control Port" with the value "20798". A blue informational text states: "By default, the Precise agents use the local system account for authentication. However, you can configure them to use a different user." Below this is a checkbox labeled "Use different Windows Service credentials than the default LocalSystem account." which is currently unchecked. Under this checkbox are three text input fields: "User Name:", "Password:", and "Domain or Server Name:". Another blue informational text says: "You may associate your server installation with a unique ID, so that multiple Precise server installations can run on the same server with no naming conflicts. If you choose this option, you must also ensure that each server's Listener uses a unique port number." Below this is a checkbox labeled "Multiple Listeners" which is unchecked. Under this checkbox is a text input field labeled "Unique ID:". Below that is a checkbox labeled "Bind the Precise Listener to the specified server address." which is unchecked. At the bottom of the window are three buttons: "Help", "OK", and "Cancel".

Framework installation on a UNIX Server

 Select UNIX manual installation mode only in the event that you have a UNIX server without Telnet/SSH/SCP connection or if you encountered issues during the UNIX server installation using automatic mode.

To install the Precise framework on a UNIX server (common server) with Telnet/SSH/SCP connection from the client PC to the Precise FocalPoint

1. Select **Automatic Installation**.
2. Complete the following fields:
 - a. **User name**
 - b. **Password**
3. Select an installation folder by clicking the browse (...) button, and then searching for the appropriate destination.
4. Click **Next**.

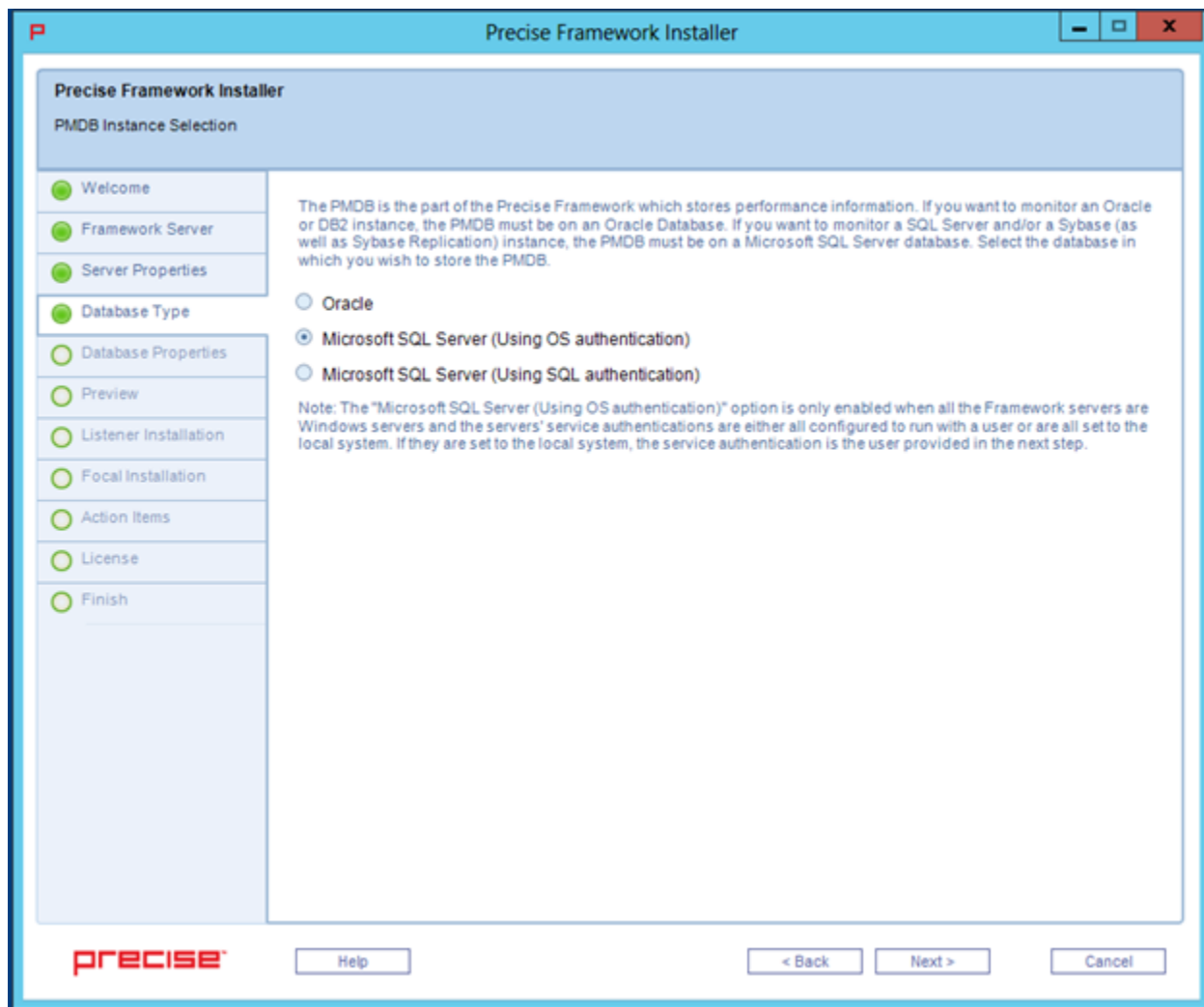
To install the Precise Framework on a UNIX server using manual installation

1. Select **Manual Installation**.
2. Click **Next**.

For more information about manually installing the Precise framework on your server, see [Adding a Windows server using manual mode](#).

Database Type

The Database Type tab allows you to select the PMDB for the Precise framework.



To select a PMDB instance

1. **If you want to monitor an Oracle or Db2 instance** , you must select **Oracle**. **If you want to monitor a SQL Server and/or a Sybase instance** , select one of the Microsoft SQL Server options.



The **Microsoft SQL Server (Using OS authentication)** option is enabled only when all the Framework servers are Windows servers, and the service authentications are either all configured to run with a user or are all set to the local system. If they are set to the local system, the service authentication is the user provided in the next step.

2. Click **Next**.

For more information about the PMDB instances, see:

- [Using an Oracle PMDB](#)
- [Using a Microsoft SQL Server PMDB](#).

Using an Oracle PMDB

To enter Oracle server PMDB login information

1. In the **Oracle Database Server** field, click the drop-down menu, and then select the Oracle server from the list, or type in a different server. The selected Oracle server is used as the PMDB.
2. In the **Oracle SID** field, click the drop-down menu, and then select the Oracle SID or manually type it in the field.

3. Type the **Oracle Listener Port Number**.
4. **If you want to use RAC**, check **Use Oracle RAC Service Name**.
5. If you want to install the PMDB in an Oracle Container database, then the PMDB must be installed in one of the PDBs and not the main Controller. Check **Use Oracle RAC Service Name**. By default, the PMDB schema is automatically installed. To install the schema manually, see [Manually installing the Oracle PMDB schema](#).
6. Type the name of the **Oracle DBA user**. This name is used only during the Precise framework installation.
7. Type the **Password** for the Oracle DBA user account.
8. Click **Next**.

To enter Oracle server PMDB schema storage parameters

1. Complete the following fields:
 - a. **Datafiles storage folder location**. The Datafiles storage folder location is where all datafiles are created (storage parameters). The folder must exist in the file system.
 - b. **Update the tablespaces definitions** (*optional*). See [Updating the tablespaces definitions](#).

To enter Oracle server PMDB schema information

1. In the **User Name** field, type a new Precise user name, or click the drop-down menu to select an existing Oracle schema user name. When using a Oracle containerized database as the PMDB, **it is recommended that the PMDB is set up on a PDB and not on the root container**. This can be done by using the **Service Name** checkbox in the database details screen of the framework installer. This is the name of the Precise user created in the Oracle instance to hold the PMDB schema. You can create a new Precise user, or select an existing user from the list.
2. Type a new **Password** for the new user, or an existing password if you have chosen an existing user.
3. Confirm the password.
4. Next to the **Store datafiles in this location** field, click the browse button (...), and then select the folder for storing datafiles. For Oracle ASM, specify the ASM disk group. (For example: +DISKGRP1/ora11asm/).
5. Click **Next**.

Using a Microsoft SQL Server PMDB

To enter Microsoft SQL Server PMDB login information (using OS authentication)

1. In the **SQL Server** instance field, click the drop-down menu, and then select the SQL Server instance from the list, or type in a different instance. The selected Microsoft SQL Server instance is used as the PMDB.
2. Type the **User Name**. The user name is used both for the PMDB installation, as well as for connecting to the SQL server when using the PMDB.
3. Type the **Password** for the user name specified.
4. Type the **Domain or Server Name**.
5. Type the name of the database you want the PMDB to use. If a database with that name already exists, it is used. If not, a new database is created. For a new database, complete the **data path** and **log path** fields.
6. By default, the PMDB schema is automatically installed. To install the schema manually, see [Manually installing the SQL Server PMDB schema](#).
7. Click **Next**.

To enter Microsoft SQL Server PMDB login information (using SQL authentication)

1. In the **SQL Server** instance field, click the drop-down menu, and then select the SQL Server instance from the list, or type in a different instance. The selected Microsoft SQL Server instance is used as the PMDB.
2. Type the **Login Name**. The login name is used both for the PMDB installation, as well as for connecting to the SQL server when using the PMDB.
3. Type the **Password** for the login name specified.
4. Type the name of the database you want the PMDB to use. If a database with that name already exists, it is used. If not, a new database is created. For a new database, complete the **data path** and **log path** fields.
5. By default, the PMDB schema is automatically installed. To install the schema manually, see [Manually installing the SQL Server PMDB schema](#).
6. Click **Next**.

Completing the new database properties

The New Database Properties tab of the Advanced window allows you to enter properties for the new database.

Advanced

Advanced

Schema File Group New Database Properties

Enter the properties of the new database

Collation: SQL_Latin1_General_CP1_CS_AS

Datafile Initial Size (MB): 1024

Datafile Autogrowth (MB): 512

Log File Initial Size (MB): 512

Log File Autogrowth (Percent): 10

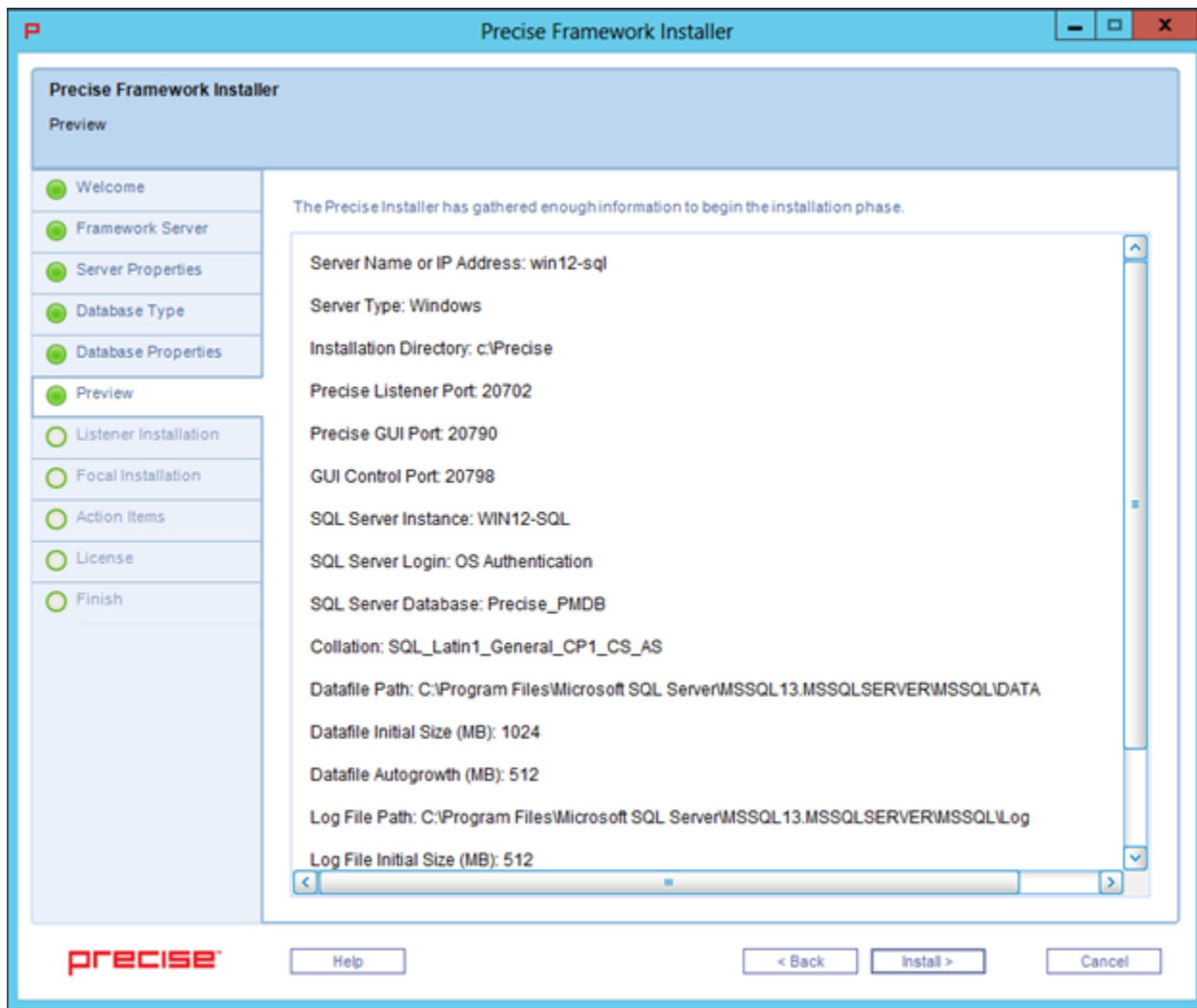
Help OK Cancel

To change the new database properties

1. In the PMDB Instance Parameters screen, click **Advanced**.
2. In the New Database Properties tab, complete the following fields:
 - a. **Collation**
 - b. **Datafile Initial Size (MB)**
 - c. **Datafile Autogrowth (MB)**
 - d. **Log File Initial Size (MB)**
 - e. **Log File Autogrowth (Percent)**
3. Click **OK**.

Preview

The Preview tab signifies that the Precise framework installer contains enough information to begin the installation phase.



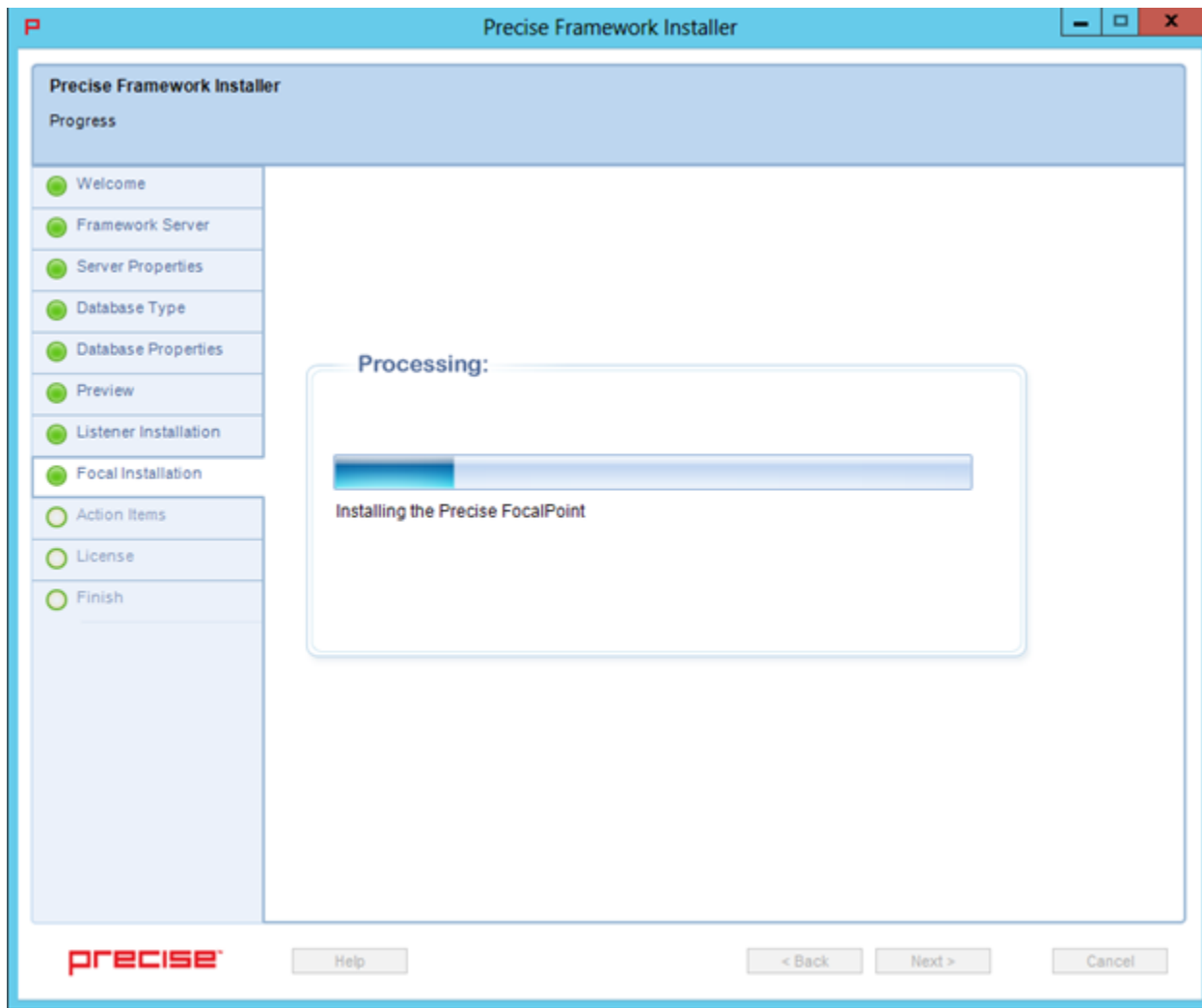
The Preview tab displays a number of details about the installation. Note that you still may change any of the displayed settings.

- To change any of the displayed settings, click **Back**. Make the necessary changes, and then continue.
- To continue with the installation, click **Install**. Installation may take several minutes to complete. A progress bar appears to let you know how installation is progressing through the Listener Installation and Focal Installation tabs.

Make sure to note the location of the installation folder selected during this stage. This folder is known as the *<precise_root>*, and is referred to during the next steps.

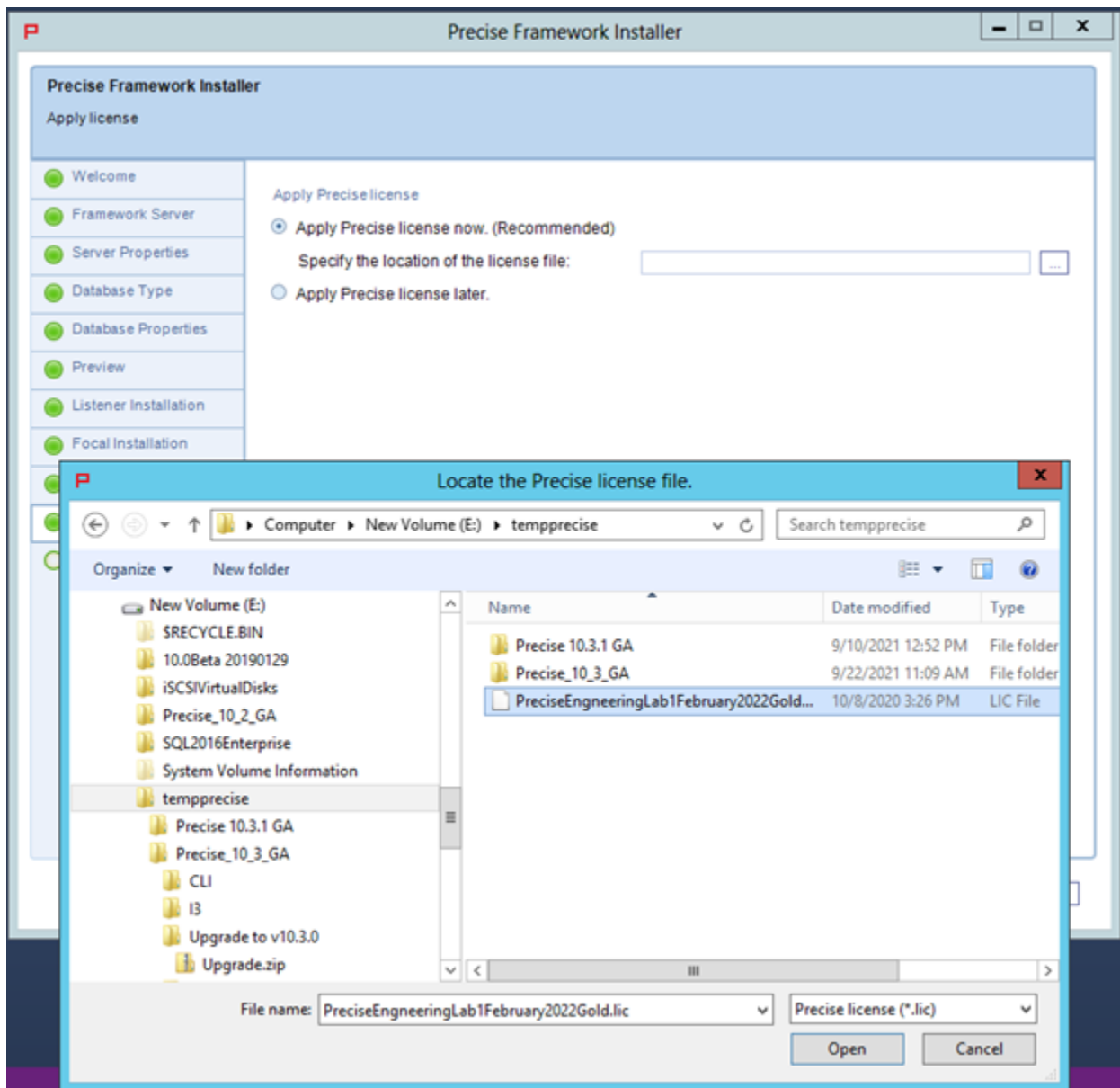
Framework installation progress screen

The framework installation progress bar appears when the Precise Framework Installer is actually performing installation. Installation may take several minutes. The progress screen visually displays the progress of actual installation.



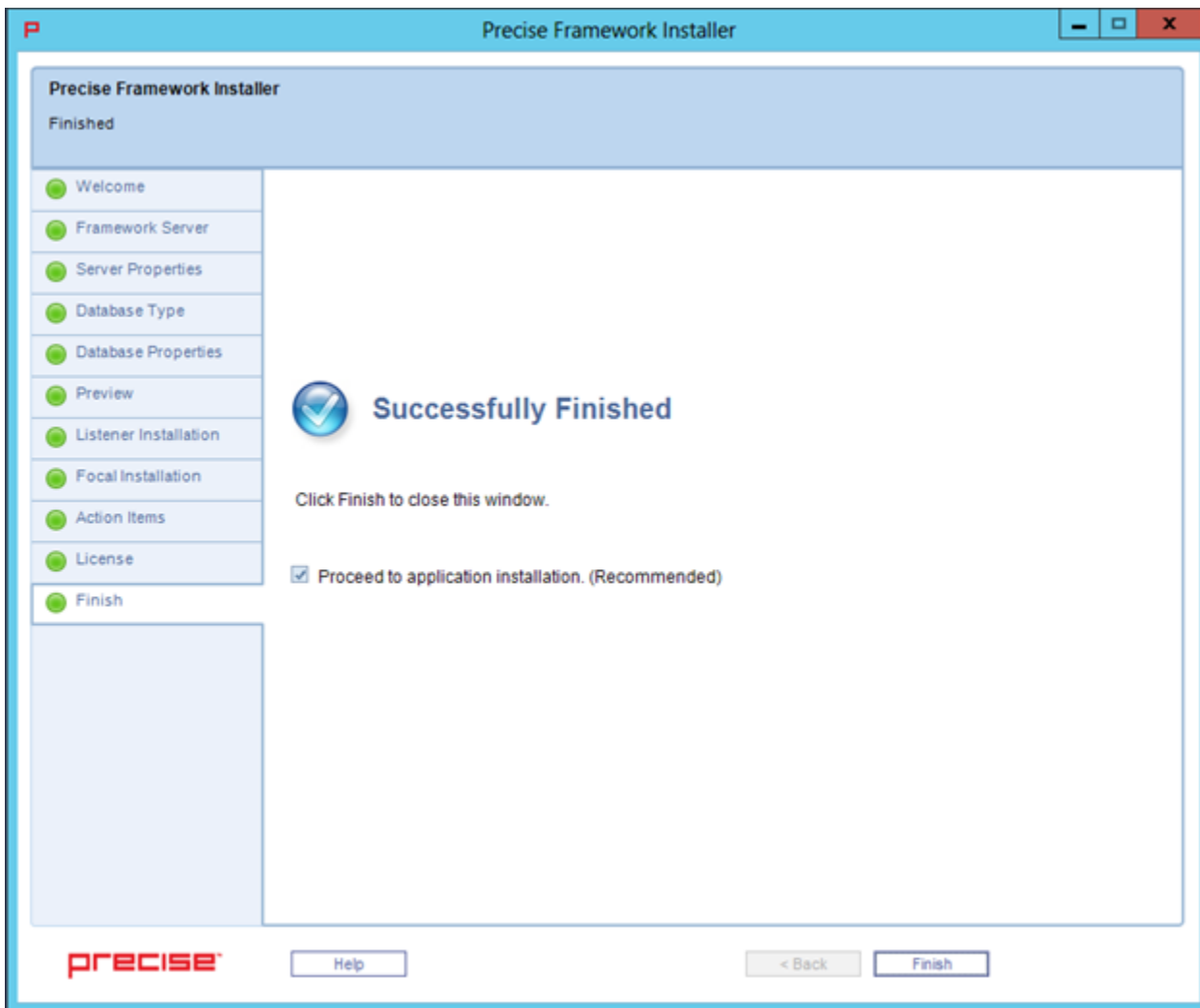
License

The License tab allows the user to apply a Precise license, which you received at purchase. Search for, and then select the license file.



Finished

The Precise installer finished screen appears when the Framework Installer is complete. If you selected the manual schema option, you now must run the schema creation script and the required action item to finish the installation.



Launching the Precise framework URL

The Precise URL launches in your default Web browser. The default **Username** and **Password** are admin/admin.

