

Precise Oracle agent installation

Before installing an Oracle agent (collector), check [Precise for Oracle requirements](#).

If the Oracle instance is part of an SAP or PeopleSoft application, check [the full installation guide](#) for further details.

Installing on Oracle Multitenant architecture (Containerized databases)

You can install Precise on Oracle Multitenant architecture (containerized databases) on Oracle 12c R2 and later.

Precise monitors the container root and all of the open pluggable databases.

At the time of installing the Precise for Oracle collector for a containerized Oracle instance, all pluggable databases (PDBs) should be open and not in restricted mode. Any PDBs that are in a closed state or in restricted mode at the time of instance installation are ignored for collector schema creation. If, and when such PDBs are opened, the Precise for Oracle collector schema must be manually created on those PDBs using manual schema scripts.

When a new PDB is added to an Oracle instance monitored with Precise, the Precise for Oracle schema must be created on it based on the instructions for Precise for Oracle manual schema collector installation and the Precise for Oracle collectors must be restarted.

Installing an Oracle cluster

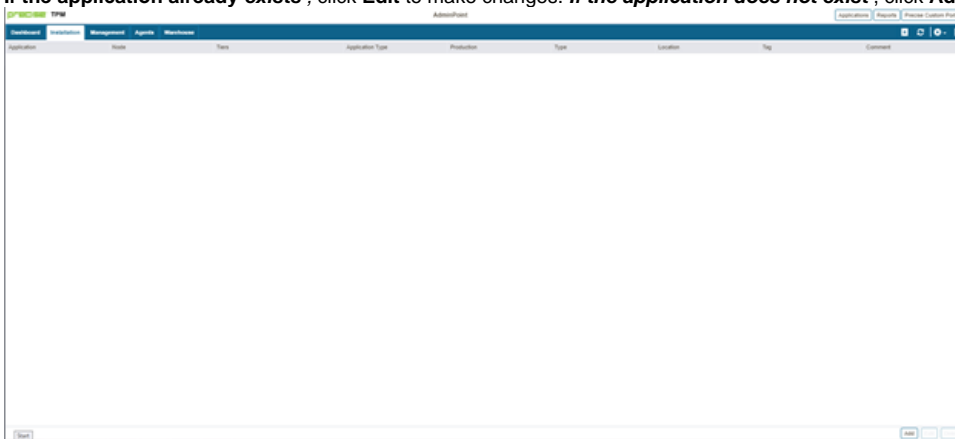
Configuring a cluster is supported for Oracle RAC (Real Application Clusters). For more information on how to install an Oracle instance for RAC, see the Installing the Oracle instance section. The Cluster setting dialog is available only in case you have Oracle clusters or instances. For information on editing or removing an existing instance, see [Editing or removing tier instances or clusters](#).

Adding an Oracle instance for monitoring

You can add a new tier instance on the AdminPoint Instances screen. Before adding a tier instance, create a list of all required inputs based on the following information.

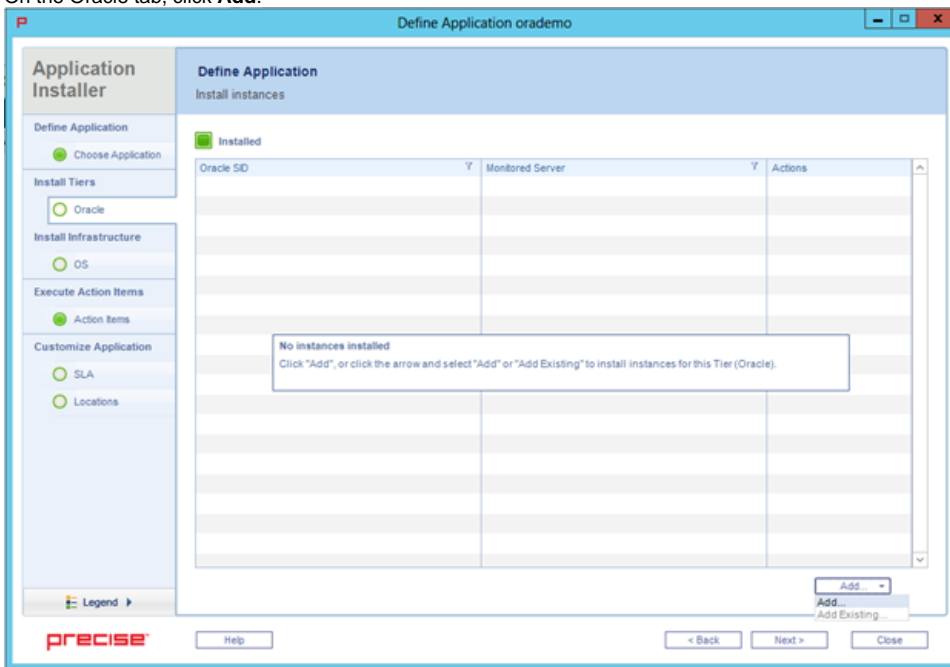
To add a tier instance

1. From the AdminPoint tab, select **Installation**. A list of applications appears.
2. **If the application already exists**, click **Edit** to make changes. **If the application does not exist**, click **Add**, and then add the application.



3. Once the Applications tab opens, click **Oracle**.

- On the Oracle tab, click **Add**.



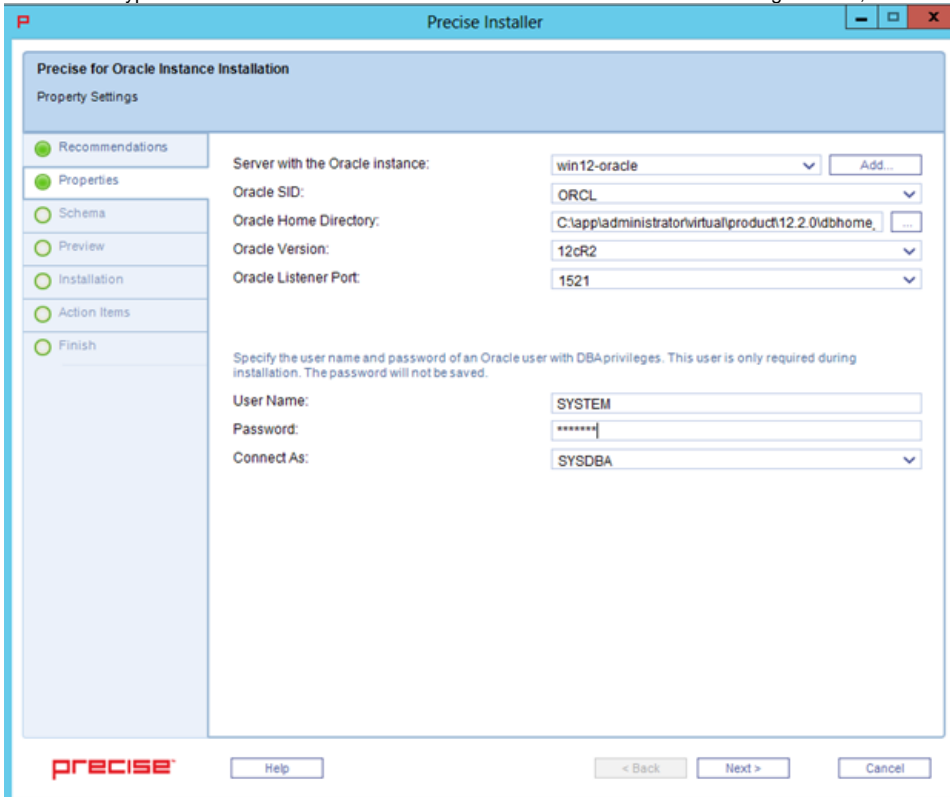
- If the Oracle instance is new, then select **Add**. If the Oracle instance already exists, then click **Add Existing**.

i It is important that you always refresh AdminPoint after adding an instance.

Defining Oracle property settings

To add properties for an Oracle tier instance

- From the available drop-down menu, select the server containing the Oracle instance.
- Click **Add** to type the name of a server not in the list. For more information about adding a server, see [Adding a new server](#).



- Select the **Oracle SID** from the drop-down list, If this is a container database, this must be the CDB name.

4. Verify the Oracle home folder path. If this is not correct, use the browse (...) feature to search for, and then select the appropriate location.
5. Select the appropriate Oracle release version for the instance.
6. Select the appropriate Oracle listener port.
7. Type the appropriate user name, and then type the associated password. This is the name of the Oracle user account that has DBA privileges. This account is used for the initial connection with the Oracle database and to create a user account named, "precise" in the database. The DBA user is used only for these tasks during installation and it not used after that process. The password is not saved by Precise.
8. In the **Connect As** field, select the method of connection.
 - The Oracle Tier installation requires creating objects (views and packages) in the SYS schema and requires privileged access to the SYS schema. This option allows connecting to your Oracle instance with a user that has SYSDBA privileges.
 - If you did not use the manual schema installation, you must connect using a DBA user as 'SYSDBA'. For more information about using the manual schema, see [Manually installing Precise for Oracle database schemas](#).
 - To connect as 'SYSDBA,' type the Oracle initialization parameter `remote_login_passwordfile` as a password file, meaning that this parameter must be set to share or exclusive. You also must grant SYSDBA privileges to the DBA user for the Oracle Tier installation.
9. Click **Next**.

Entering a user for an Oracle schema credential

The screenshot shows the 'Precise Installer' window with the 'User Details' step selected in the left-hand navigation pane. The main area is titled 'Specify the user name and password of the Oracle user who will own the Precise for Oracle schema.' There are two radio button options: 'Create a new user' (selected) and 'Use an existing user'. Under 'Create a new user', there are three text input fields: 'User Name' (containing 'c##Precise_ORCL_1'), 'Password' (masked with asterisks), and 'Confirm Password' (masked with asterisks). Under 'Use an existing user', there are two text input fields: 'User Name' and 'Password', followed by a 'Find User' button. At the bottom of the main area, there is a text label 'Configure schema created on this instance, and other settings:' and an 'Advanced...' button. The bottom of the window features a 'precise' logo, a 'Help' button, and navigation buttons '< Back', 'Next >', and 'Cancel'.

To enter a new user for an Oracle Schema credential

1. Select **Create a new user**.
2. Type the user name. If this is installed in an Oracle Container Database, the user must be prefixed **C##**.
3. Type and then confirm the password associated with the user account.
4. **If you want to see the tablespaces definition**, click **Advanced**.
5. Click **Next**.

To enter an existing user for an Oracle Schema credential

1. Select **Use an existing user**.
2. Click **Find User** to locate an existing user name.
3. On the Find User window, click **Find** to filter for an existing (available) user name.
4. Select an available user name, and then click **OK**. If this is installed in an Oracle Container Database, the user must be prefixed **C##**. The selected user name now appears on the Oracle Schema credential screen.

5. On the Oracle Schema credential screen, type the password associated with the existing user.
6. **If you want to see the tablespaces definition**, click **Advanced**.
7. Click **Next**.

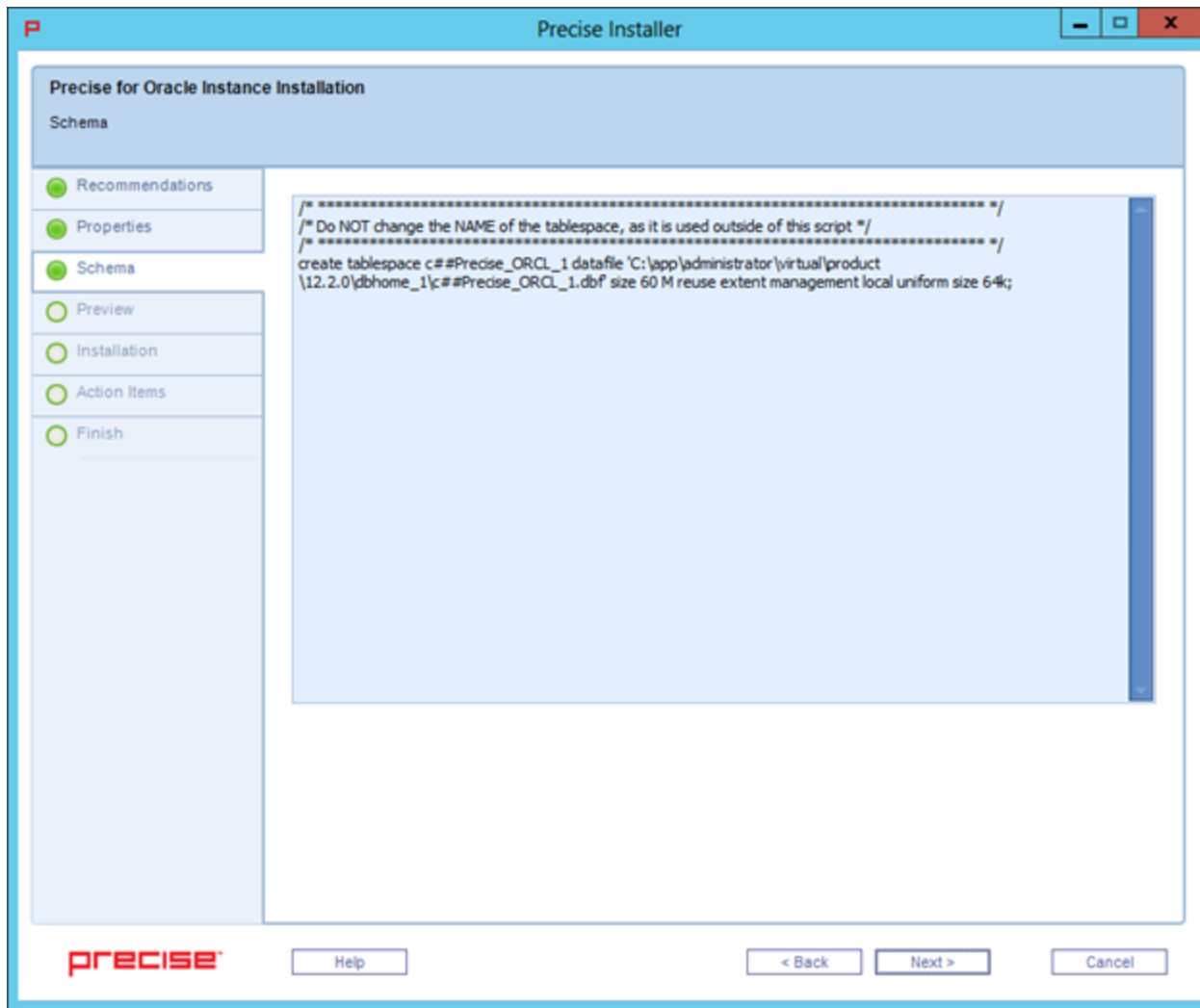
About the tablespace creation page

The tablespace creation script page enables the user to activate default tablespace creation, or to create customized tablespaces.

The screenshot shows a window titled "Advanced" with a red "X" button in the top right corner. The window has a tabbed interface with five tabs: "General", "ERP", "Settings", "Storage", and "Schema". The "Schema" tab is currently selected. Below the tabs, there is a text instruction: "Use the Schema tab to define schema specific configuration parameters." The form contains the following fields and controls:

- Tablespace name:** A dropdown menu with the value "c##Precise_ORCL_1" and a downward arrow.
- Datafile for the tablespace:** A text input field containing "c##Precise_ORCL_1.dbf".
- Temporary tablespace name:** A dropdown menu with the value "TEMP" and a downward arrow.
- Datafile for the temporary table:** An empty text input field.
- Specify datafiles directory:** A text instruction followed by a note: "For Oracle ASM specify the ASM disk group instead. For example: +DISKGRP1/ora11asm/".
- Directory:** A text input field containing "C:\app\administrator\virtual\product\..." and a browse button ("...").

At the bottom of the window, there are three buttons: "Help", "OK", and "Cancel".

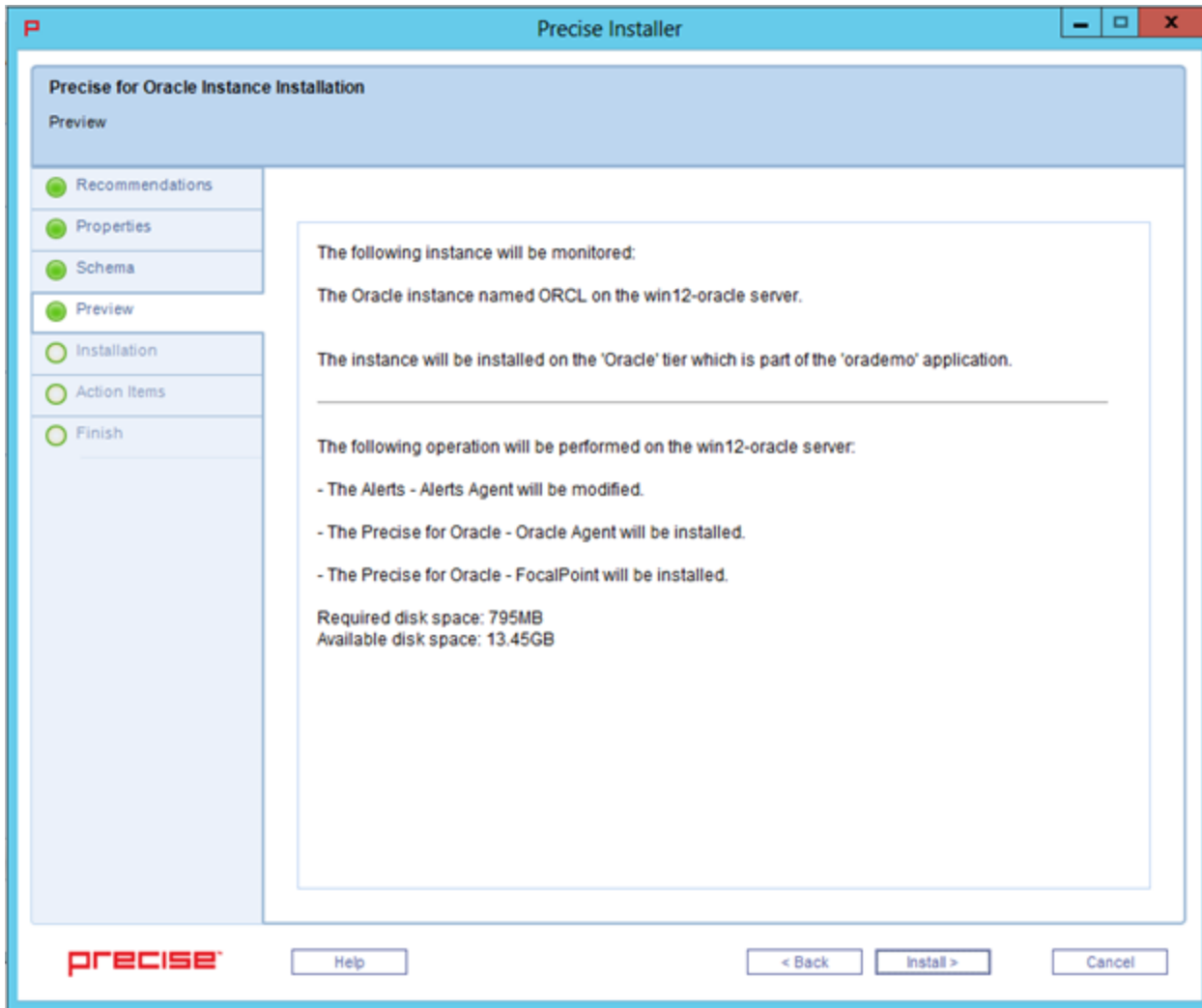


Click **Next** to activate default tablespace creation.

If you want to modify Oracle instance tablespace creation, copy the text that appears on the screen to SQL*PLUS and run as you wish. Then click **Next** to continue installation while using the tablespaces you have created.

Oracle tier installation Preview page

The Preview page signifies that the AdminPoint Tier installer gathered enough information to begin installation.



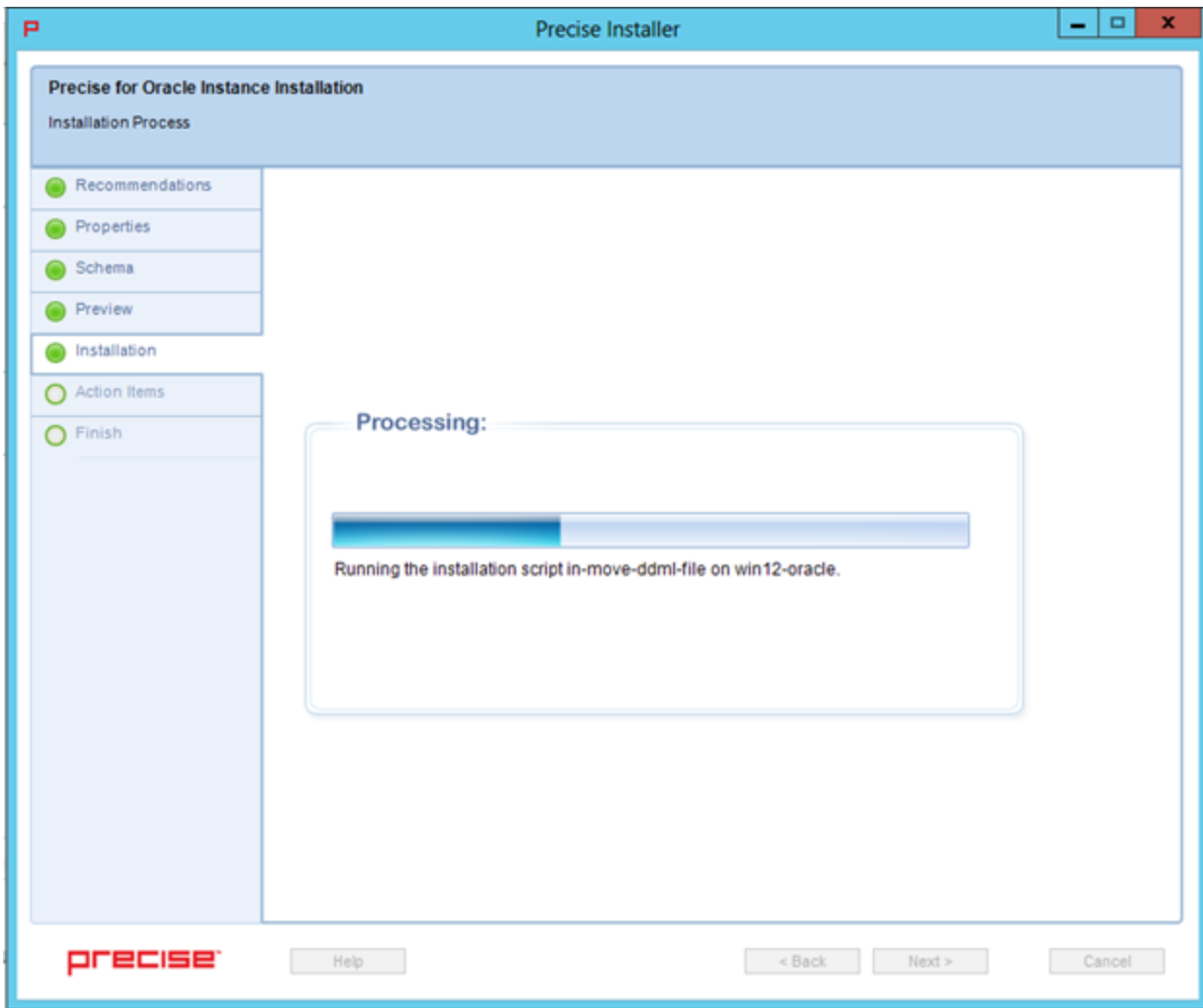
The Preview page displays the following details before installation begins:

- server name or IP address
- name of the monitored server
- actions queued in their respective order
- location of the installation folder
- required disk space
- currently-available disk space

You can make any necessary changes at this point. Click **Back** to go to the appropriate screen to make a change, and then click **Next** to continue installation. Click **Cancel** to stop the installation process.

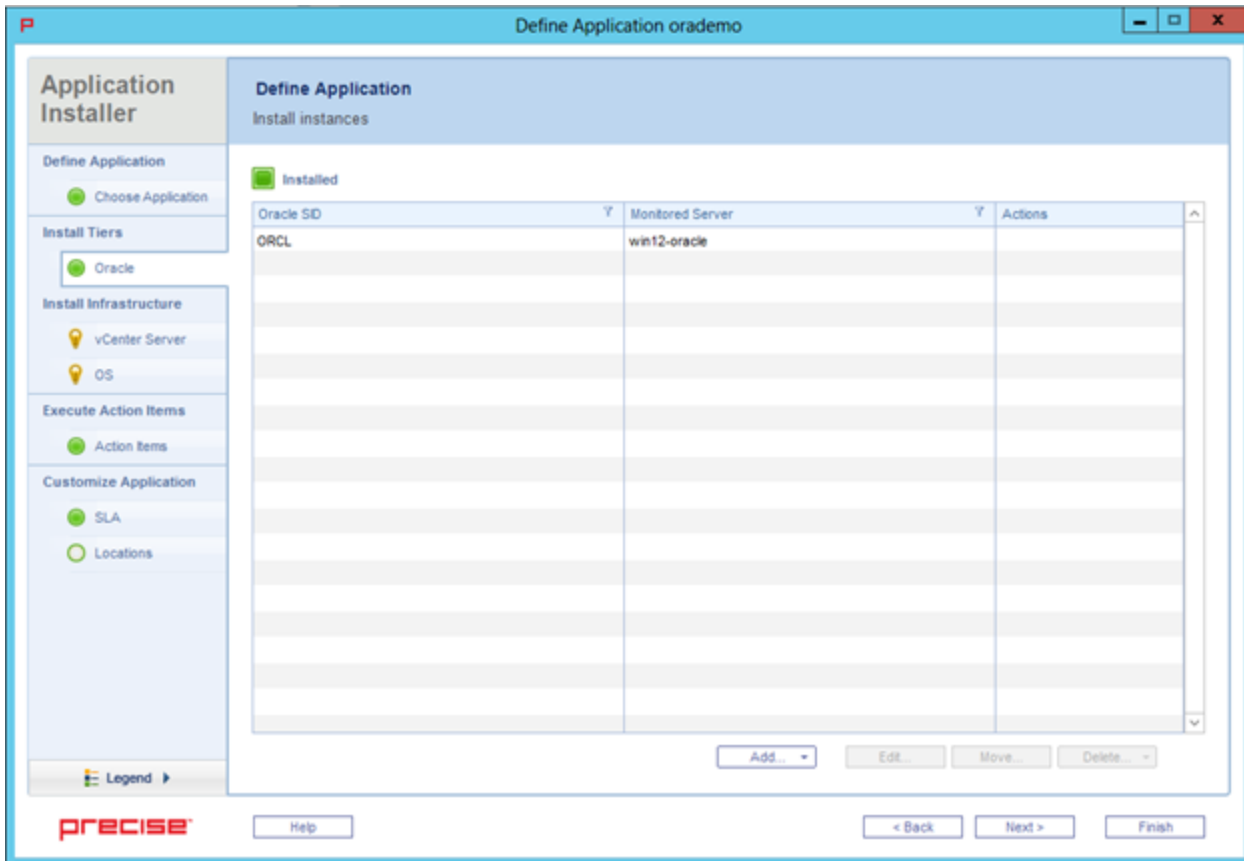
Oracle tier Installation progress page

This page appears when the AdminPoint Tier installer is performing the installation and displays the progress of actual installation on selected servers. The installation process may take several minutes.



Oracle tier installation complete page

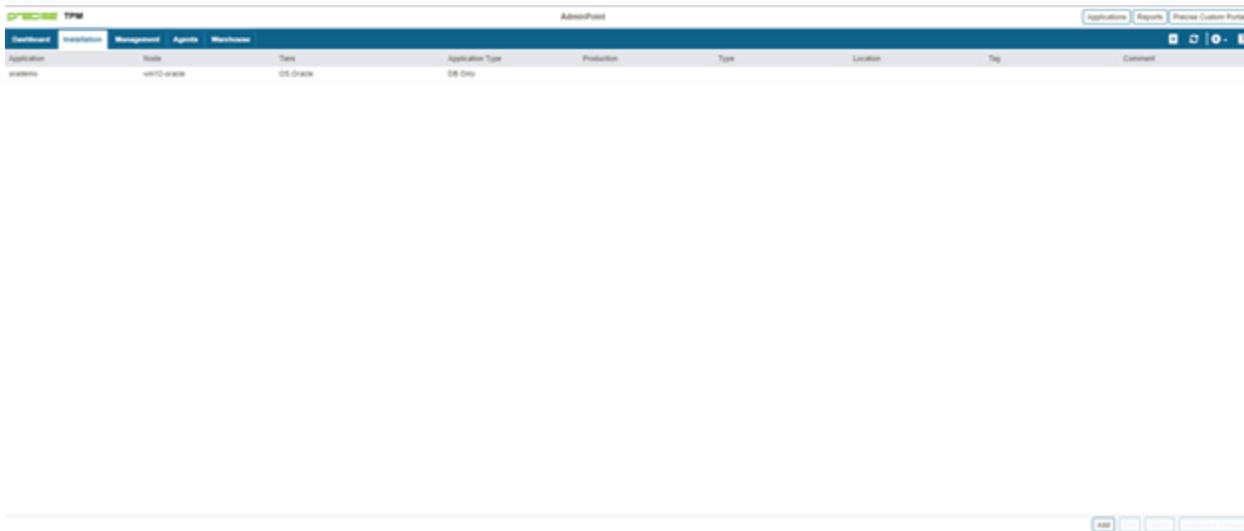
This page appears when the AdminPoint tier installer completes installation of all tier instances.



If there are no action items, click **Finish** to complete the instance installation. If there are action items, click **Next**.

To add additional instances, repeat the steps above, otherwise click **Finish**.

Refresh the applications and the new application is visible.



Select the Applications tab and the new application appears with the Oracle instance(s) added.

