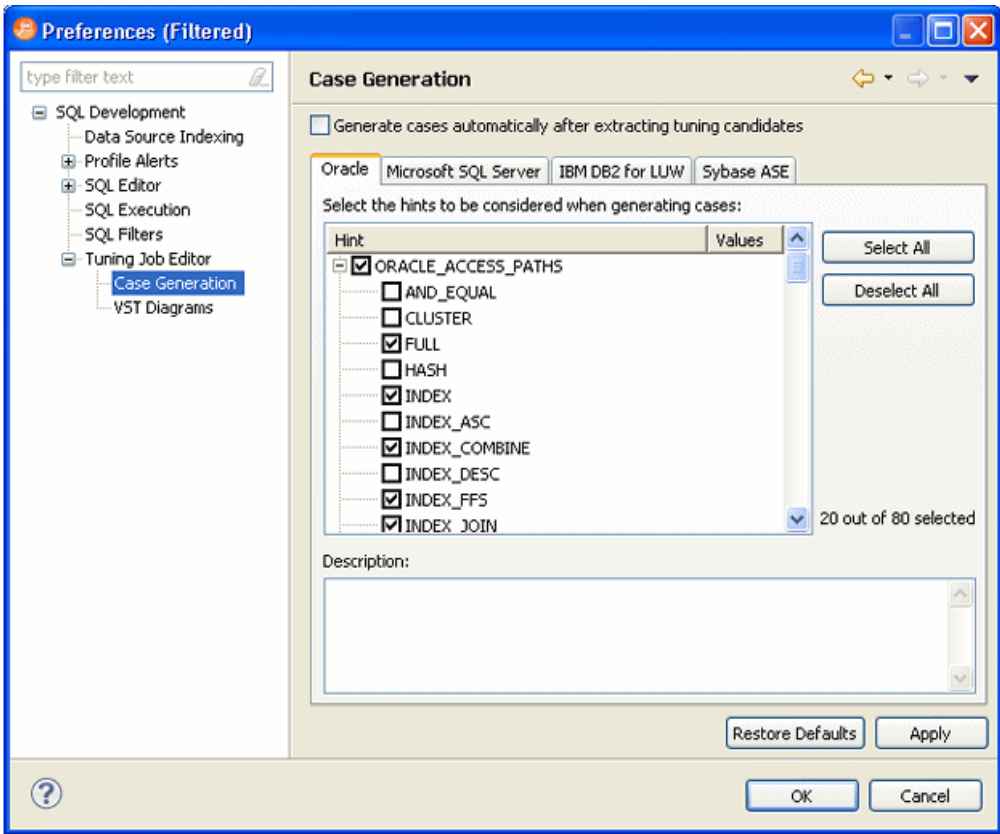


# Specify case generation preferences

Additionally, the Generated Case preference page lets you enable or disable the automatic generation of SQL Optimizer hint-based cases of SQL statements added to a tuning job. It also lets you indicate which specific hint types are generated when the feature is enabled.



Using the SQL Optimization perspective, select **Preferences > Tuning Job Editor > Case Generation**.

Use the Case Generation option automatically after extracting tuning candidates control to enable or disable automatic generation of hint-based cases, and then select the check boxes to specify the hint-based cases that are generated for a statement added to a tuning job.

## About Statement Records

Column or Column Set	Description
SQL Statements and Cases	Identifiers for the generated statement or case: <ul style="list-style-type: none"><li>• <b>Name:</b> Statements are assigned a numbered identifier based on the order in which they were added to a tuning job.</li><li>• <b>Text:</b> An excerpt of the statement or case based on the statement type. For details on how to view the entire statement or case.</li></ul>
Cost	An explain plan-based cost estimate. This field is populated as soon as the statement is added to the <b>Overview</b> tab.  This column set can be expanded to display a graphical representation of the cost to facilitate comparisons among cases.
Index Analysis	Tuning automatically detects indexes that require optimization and offers you the option to automatically optimize the index. For more information, see <a href="#">Implementing Index Analysis Recommendations</a> .
Elapsed Time	The execution time during the most recent execution. This column set is not populated until you execute the statement or case.  This column set can be expanded to display a graphical representation of the elapsed time to facilitate comparisons among cases.

Other Execution Statistics	<p>Against Oracle datasources, the default, collapsed view has <b>Physical Reads</b> and <b>Logical Reads</b> columns. Expanded, there are also <b>Consistent Gets</b>, <b>Block Gets</b>, and <b>Rows Returned</b>, <b>CPU time(s)</b>, <b>Parse CPU Time(s)</b>, <b>Row Sorts</b>, <b>Memory Sorts</b>, <b>Disk Sorts</b>, and <b>Open Cursors</b> columns.</p> <p>For details on these statistics, refer to your DBMS documentation.</p> <p>This column set is not populated until you execute the statement or case.</p>
----------------------------	--