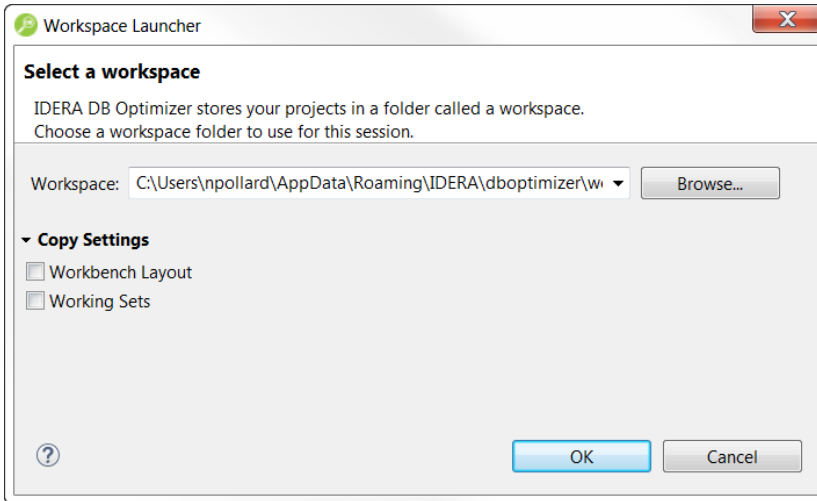


Specify a workspace

When you install DB Optimizer, you are prompted to create a workspace. Then, when you launch DB Optimizer, you have an opportunity to choose your workspace. At any time while running DB Optimizer, you can change your workspace.

To switch your workspace

1. In DB Optimizer, select **File > Switch Workspace**. The Workspace Launcher appears.



2. Browse for the appropriate workspace or create a copy of an existing workspace using the available **Copy Settings**.
3. Click **OK** after making your selection. DB Optimizer opens or creates the appropriate workspace.