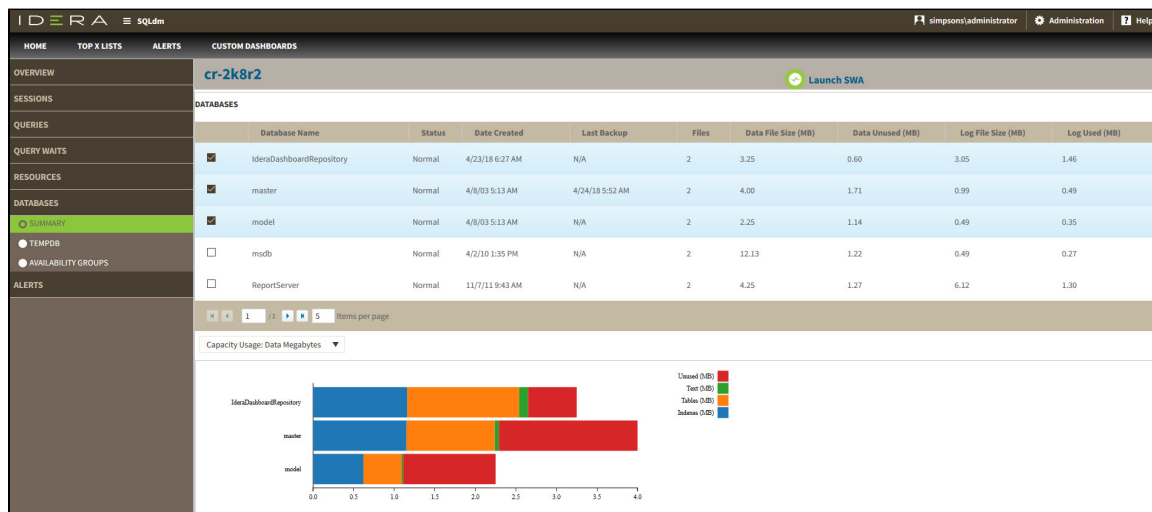


View your SQL Server databases information in IDERA Dashboard

The Databases tab of the single instance dashboard contains the [Summary](#), [Tempdb](#), and [Availability Groups](#) views. The Databases tab allows you to view the status of all the databases on the selected SQL Server instance, the tempdb database, and the availability groups.



Summary view

The **Databases > Summary** tab lists each database on the monitored SQL Server instance and provides a large variety of database statistics:

- Database name
- Status
- Date Created
- Last Backup
- Files
- Data File Size (MB)
- Data Unused (MB)
- Log File Size (MB)
- Log Used (MB)

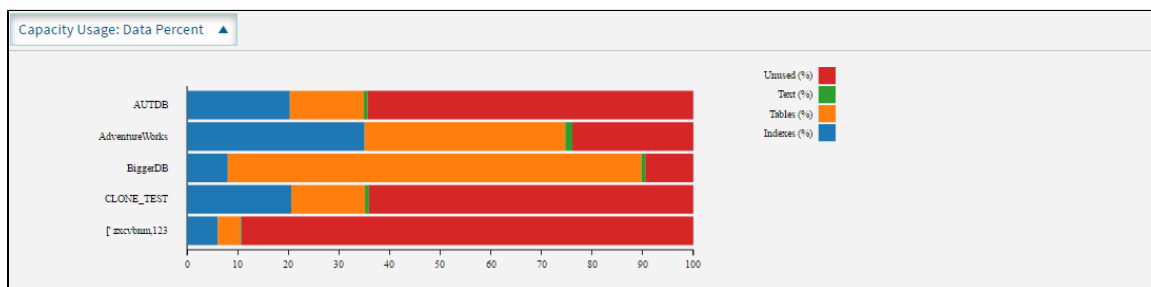


Multi-database selection

Select multiple databases to display as horizontal stacked bar charts.

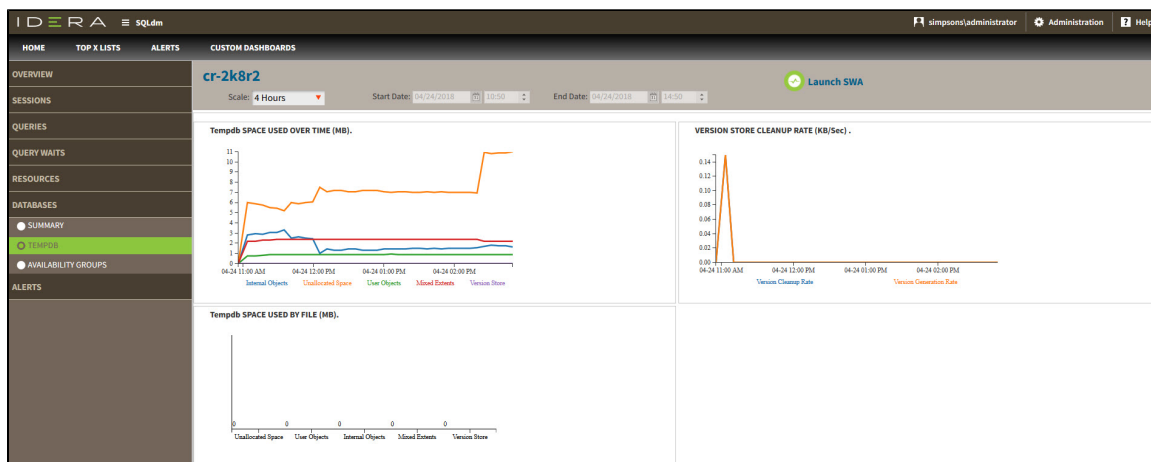
Capacity Usage chart

You can choose to view how data or log is used on your database. The Capacity Usage drop-down list allows you to choose data or log in megabytes or percentages. You can select one or more databases in the Databases panel to display in the Capacity Usage chart. This chart provides information on the text, tables, indexes space, as well as the unused space of your database.



Tempdb view

The **Databases > Tempdb** tab allows you to view the status of your tempdb database on the selected SQL Server instance. Click image to view full size.



The Tempdb view contains the following charts:

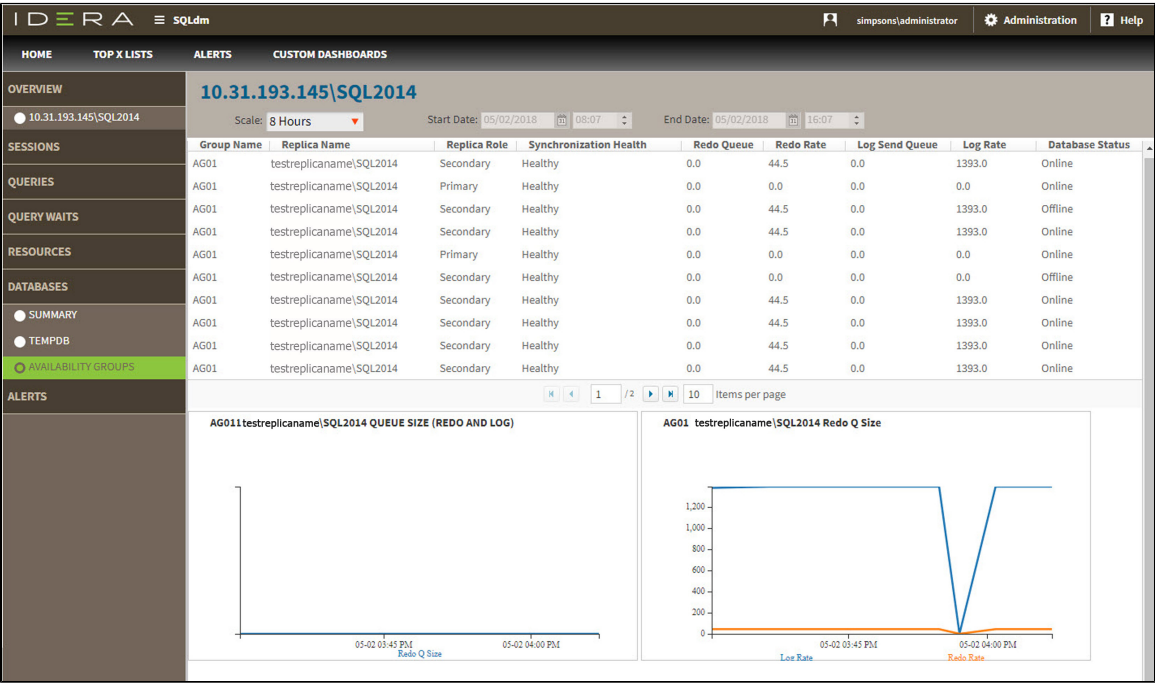
- Tempdb Space Used over Time (MB)
- Version Store Cleanup Rate (KB/Sec)
- Tempdb Space Used by File (MB)

For information on each chart, see [Get the tempdb status summary](#).

Availability Groups

The **Databases > Availability Groups** tab allows you to view the status of your availability groups on the selected SQL Server instance. This tab lists the Availability Groups, with the following description:

- Group Name
- Replica Name
- Replica Role
- Synchronization Health
- Redo Queue
- Redo Rate
- Log Send Queue
- Log Rate
- Database Status



Access the Databases tab

The SQL Diagnostic Manager web console provides two paths to access the Databases tab. The first access path is by selecting the Databases tab of the single instance dashboard. You can also click the database category icon of a specific instance in the thumbnail view.