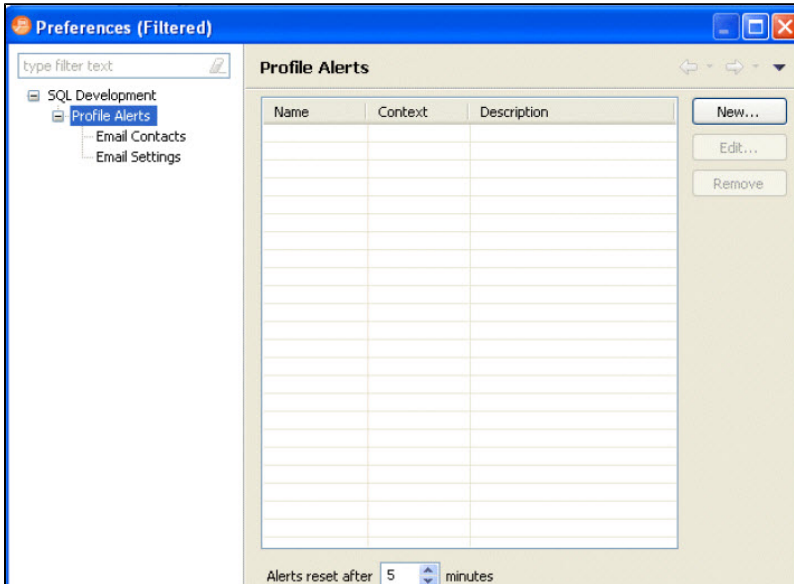


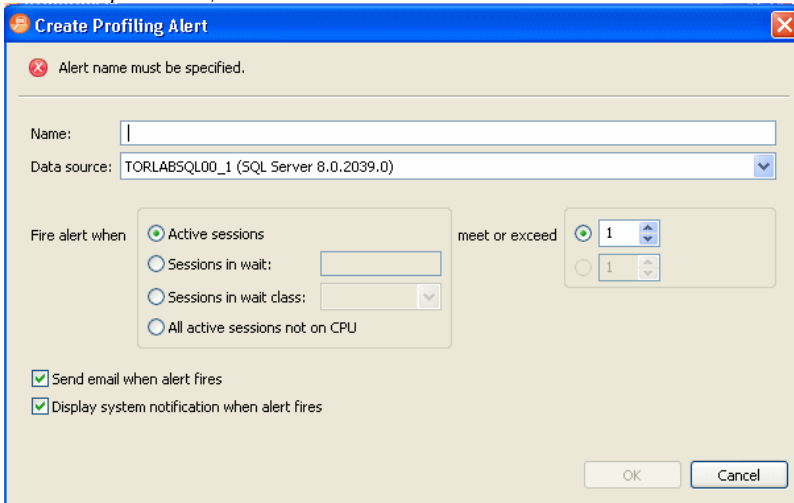
Specify Profile Alerts Preferences during Configuration

You can configure SQL Query Tuner to send you an alert via email if during a profiling session it detects that database activity has met or exceeded the threshold that you specified.

1. Select **Preferences > Profile Alerts**.



2. To create a profile alert, click **New**.



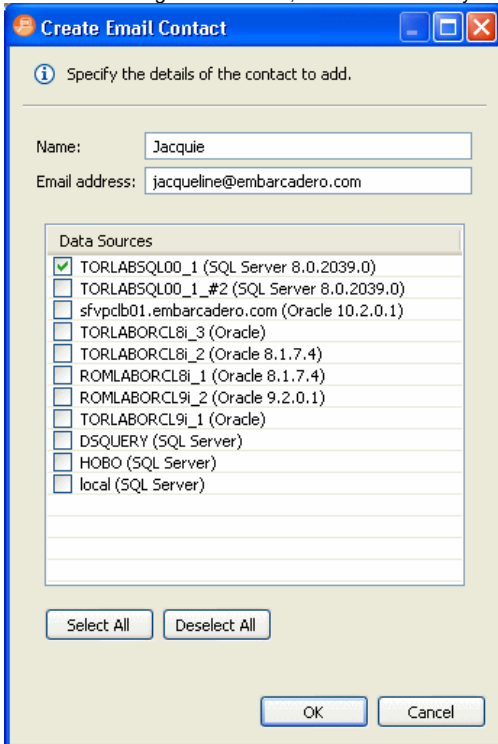
To edit an existing profile alert, select the alert you want to modify and then click **Edit**. The **Create Profiling Alert** or **Edit Profiling Alert** dialog appears.

3. Complete the create/edit profiling alert dialog as required and then click **OK**.
4. In the **Preferences** tree, click **Email Contacts**.

If you select **Display system notification when alert fires**, you will receive an alert notification in your Windows system tray when the alert fires. If you select **Send email when alert fires**, you must specify email contacts and email server settings.

5. To create a new email contact, click **New**.

To edit an existing email contact, select the contact you want to modify and then click **Edit**.

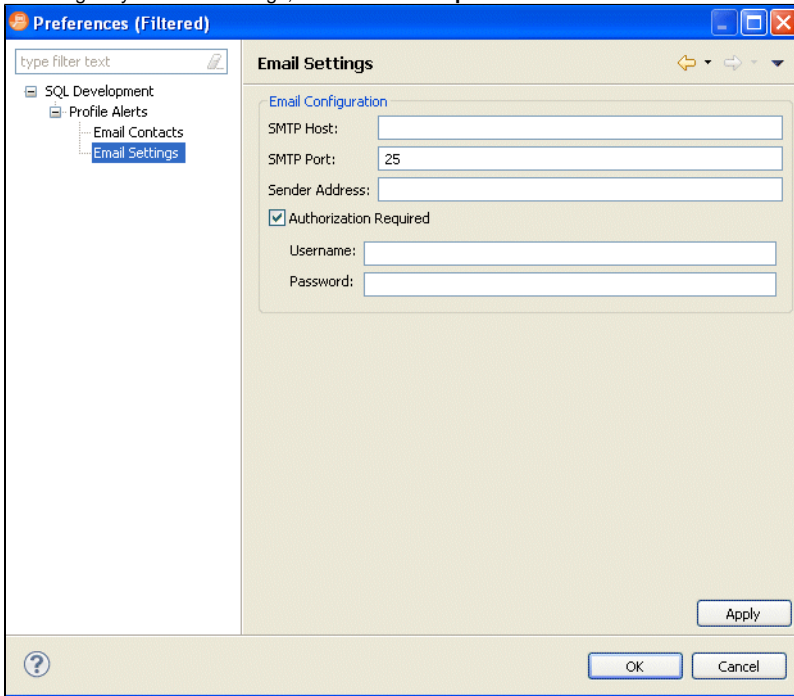


The "Create Email Contact" dialog box is shown. It has a title bar with standard window controls. Below the title bar is an information icon and the text "Specify the details of the contact to add." There are two text input fields: "Name:" with the value "Jacquie" and "Email address:" with the value "jacqueline@embarcadero.com". Below these is a "Data Sources" section with a list of data sources, each with a checkbox. The first checkbox is checked. At the bottom of the list are "Select All" and "Deselect All" buttons. At the very bottom of the dialog are "OK" and "Cancel" buttons.

Data Sources	
<input checked="" type="checkbox"/>	TORLABSQL00_1 (SQL Server 8.0.2039.0)
<input type="checkbox"/>	TORLABSQL00_1_#2 (SQL Server 8.0.2039.0)
<input type="checkbox"/>	sfvpcb01.embarcadero.com (Oracle 10.2.0.1)
<input type="checkbox"/>	TORLABORCL8i_3 (Oracle)
<input type="checkbox"/>	TORLABORCL8i_2 (Oracle 8.1.7.4)
<input type="checkbox"/>	ROMLABORCL8i_1 (Oracle 8.1.7.4)
<input type="checkbox"/>	ROMLABORCL9i_2 (Oracle 9.2.0.1)
<input type="checkbox"/>	TORLABORCL9i_1 (Oracle)
<input type="checkbox"/>	DSQUERY (SQL Server)
<input type="checkbox"/>	HOB0 (SQL Server)
<input type="checkbox"/>	local (SQL Server)

6. From the list of **Data Sources**, select the data sources for which this contact should receive an email notification that an alert has fired, and then click **OK** to save this contact.

7. To configure your email settings, click **SQL Development > Profile Alerts > Email Settings**.



The "Preferences (Filtered)" dialog box is shown. It has a title bar with standard window controls. On the left is a tree view with a search bar "type filter text". The tree view shows a hierarchy: "SQL Development" > "Profile Alerts" > "Email Contacts" > "Email Settings" (which is selected). The main area is titled "Email Settings" and contains an "Email Configuration" section. This section has several text input fields: "SMTP Host:", "SMTP Port:" with the value "25", "Sender Address:", "Username:", and "Password:". There is also a checked checkbox for "Authorization Required". At the bottom right of the main area is an "Apply" button. At the bottom of the dialog are "OK" and "Cancel" buttons.

8. Complete the Email Settings as required and click **Apply**.

- **Sender Address:** This is an email user configured on your email server. SQL Query Tuner uses this address to send alerts to the email contacts defined.