

Install the IDERA Dashboard & SQL Workload Analysis

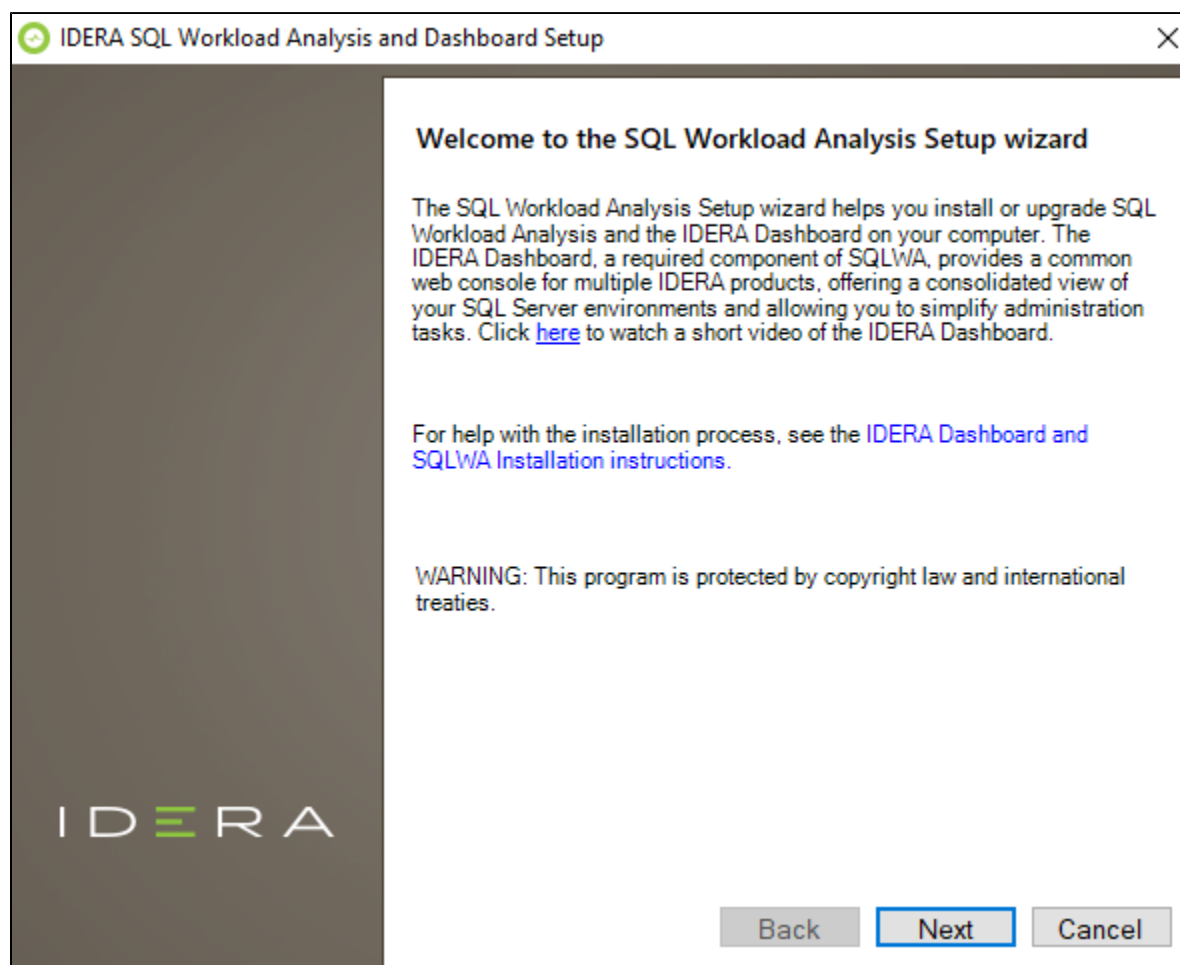
This procedure guides you through the installation of the IDERA Dashboard and SQL Workload Analysis.

Start your IDERA SQL Workload Analysis installation

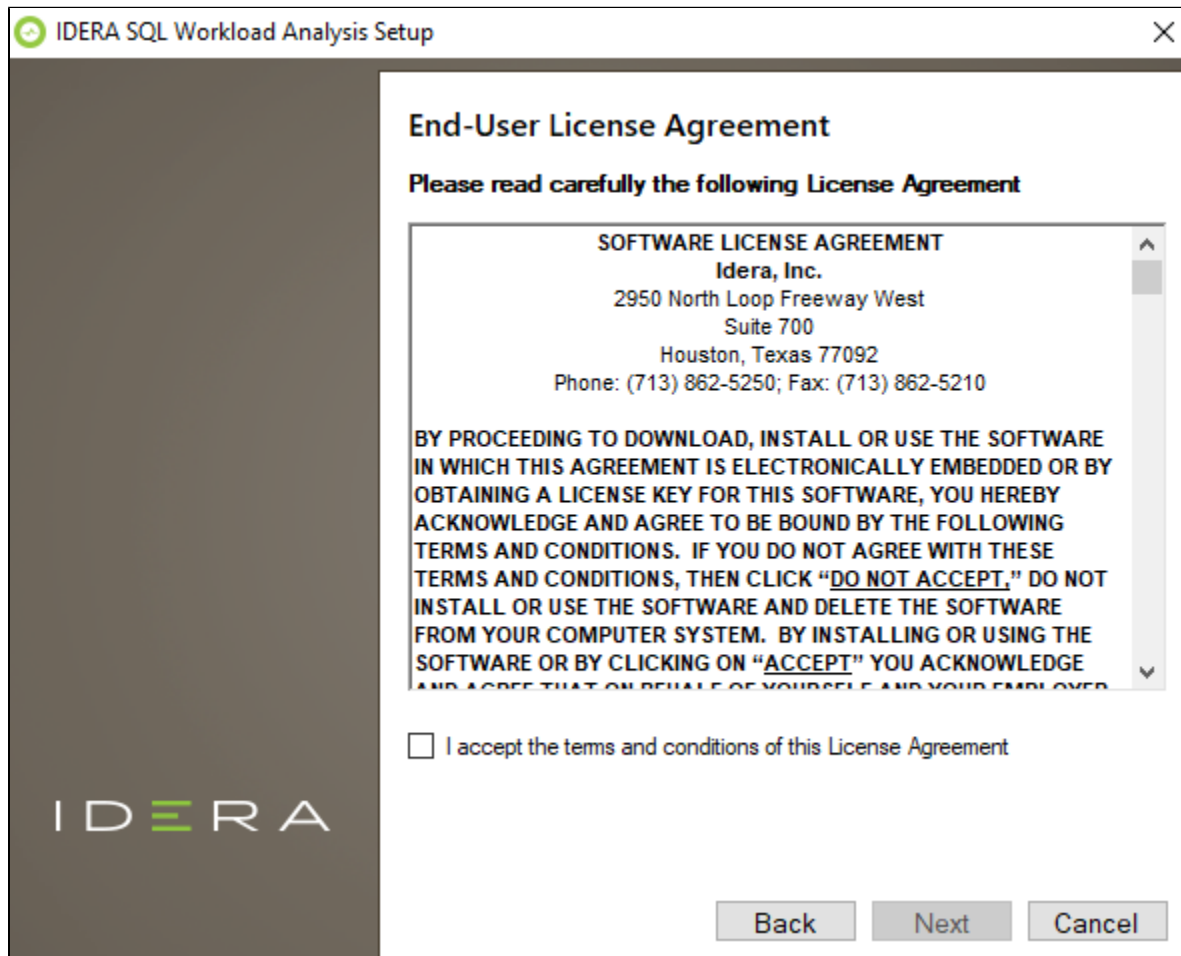
You can install the IDERA Dashboard and SQL Workload Analysis on any computer that meets or exceeds the product requirements.

To start installing the IDERA Dashboard and SQL Workload Analysis:

1. Log on with an administrator account to the computer on which you want to install SQL Workload Analysis.
2. Run Setup.exe in the root of the installation kit.
3. Click **Next** on the **Welcome** window of the setup program.

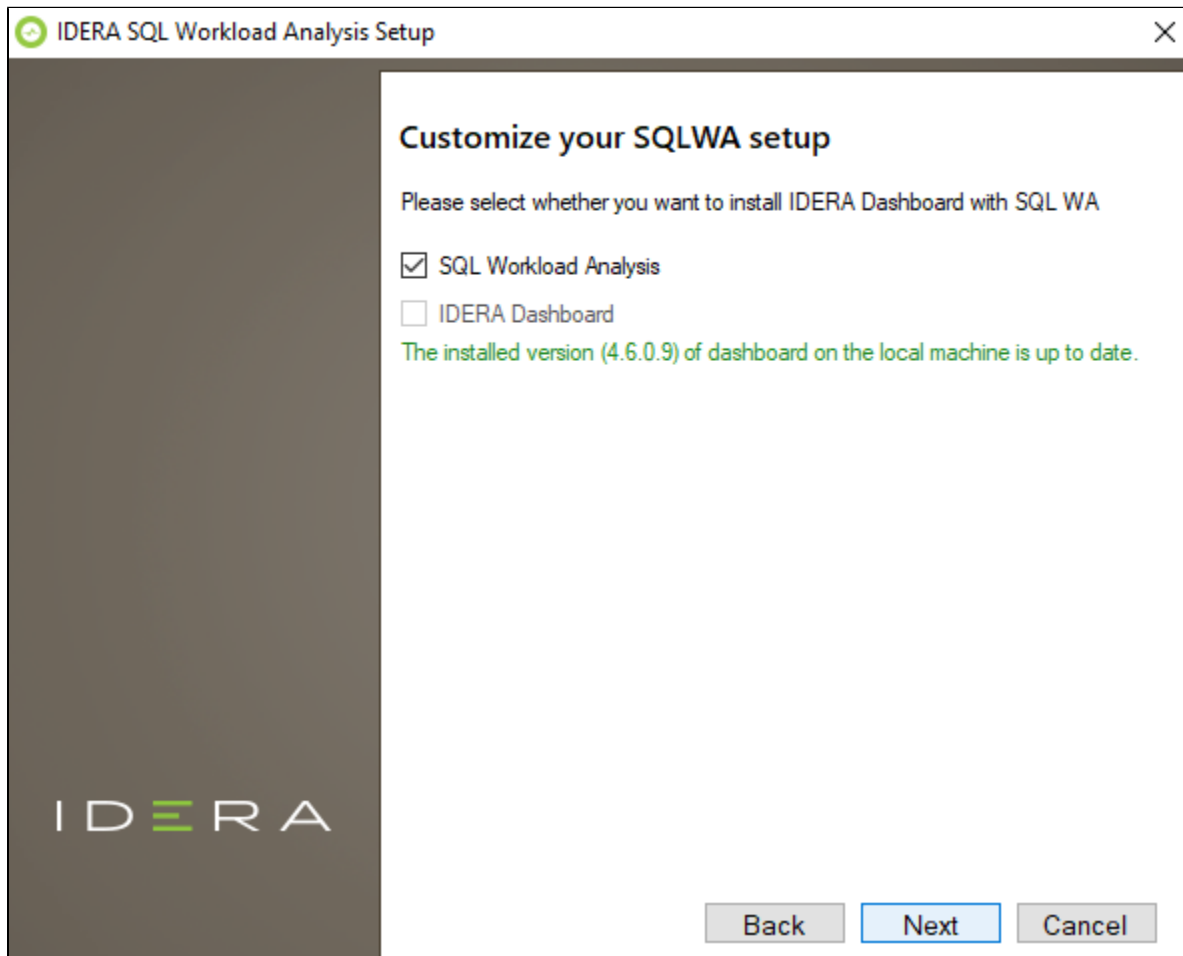


4. Review the license agreement. To accept this license agreement, click **I accept the terms and conditions of this License Agreement**, and then click **Next**.



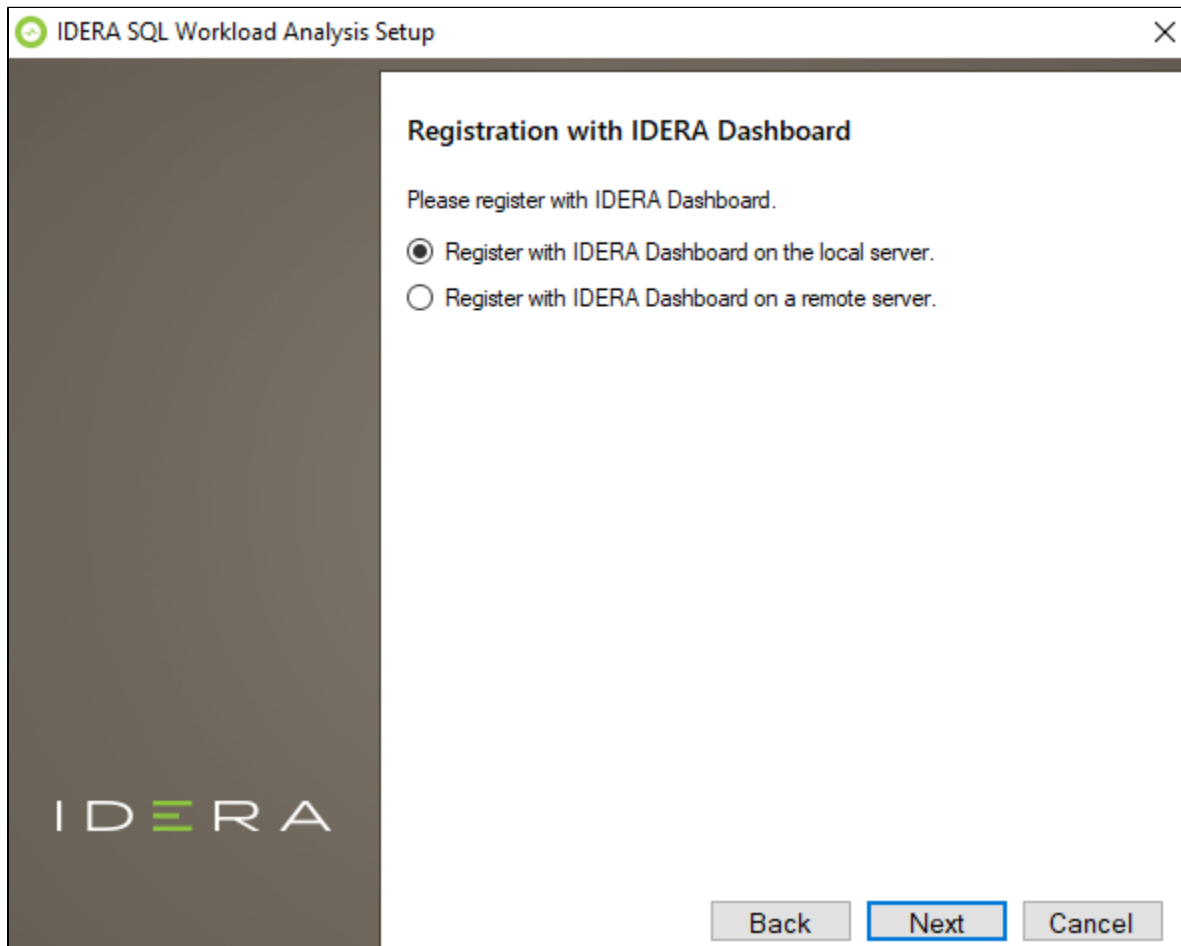
Select Products to install

By default both products (IDERA Dashboard & SQL Workload Analysis) are selected to be installed. You can choose to install only the IDERA Dashboard or only SQL Workload Analysis.



Select a registration option to install your IDERA Dashboard

You can select to install or upgrade your IDERA Dashboard on your local machine or on a remote server. If you have previously installed the IDERA Dashboard, provide the URL and the administrator credentials, and click **Next**.



Select an installation location and type a display name for your instance

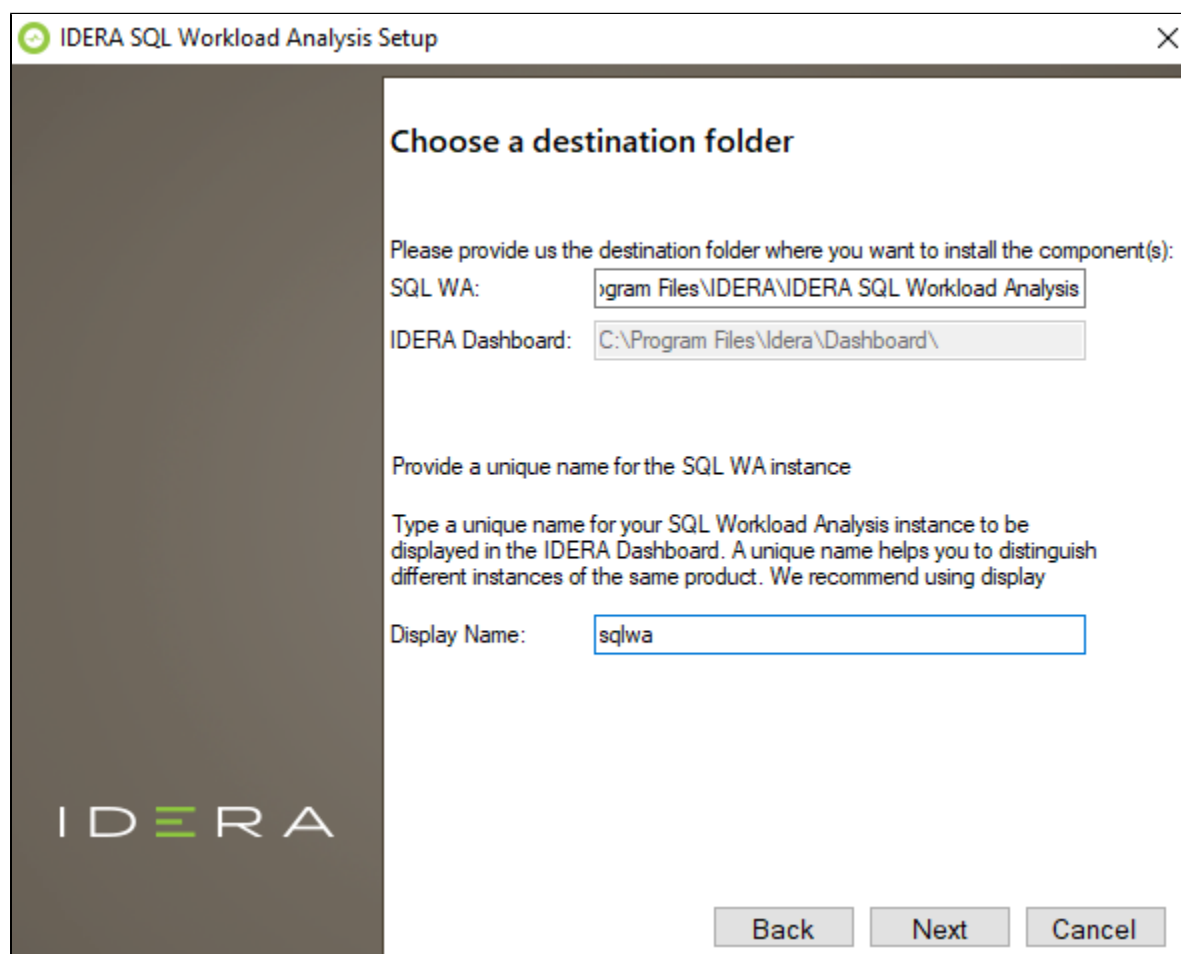
You can use the default install location or specify a different path. For your first install, we recommend using the default location for SQLWA and the IDERA Dashboard.

On the Display Name text box, type a unique name for your SQLWA instance, and click **Next** to continue with the installation.



Display name

The display name helps you to distinguish different instances of the same product.



IDERA SQL Workload Analysis Setup

Choose a destination folder

Please provide us the destination folder where you want to install the component(s):

SQL WA:

IDERA Dashboard:

Provide a unique name for the SQL WA instance

Type a unique name for your SQL Workload Analysis instance to be displayed in the IDERA Dashboard. A unique name helps you to distinguish different instances of the same product. We recommend using display

Display Name:

IDERA

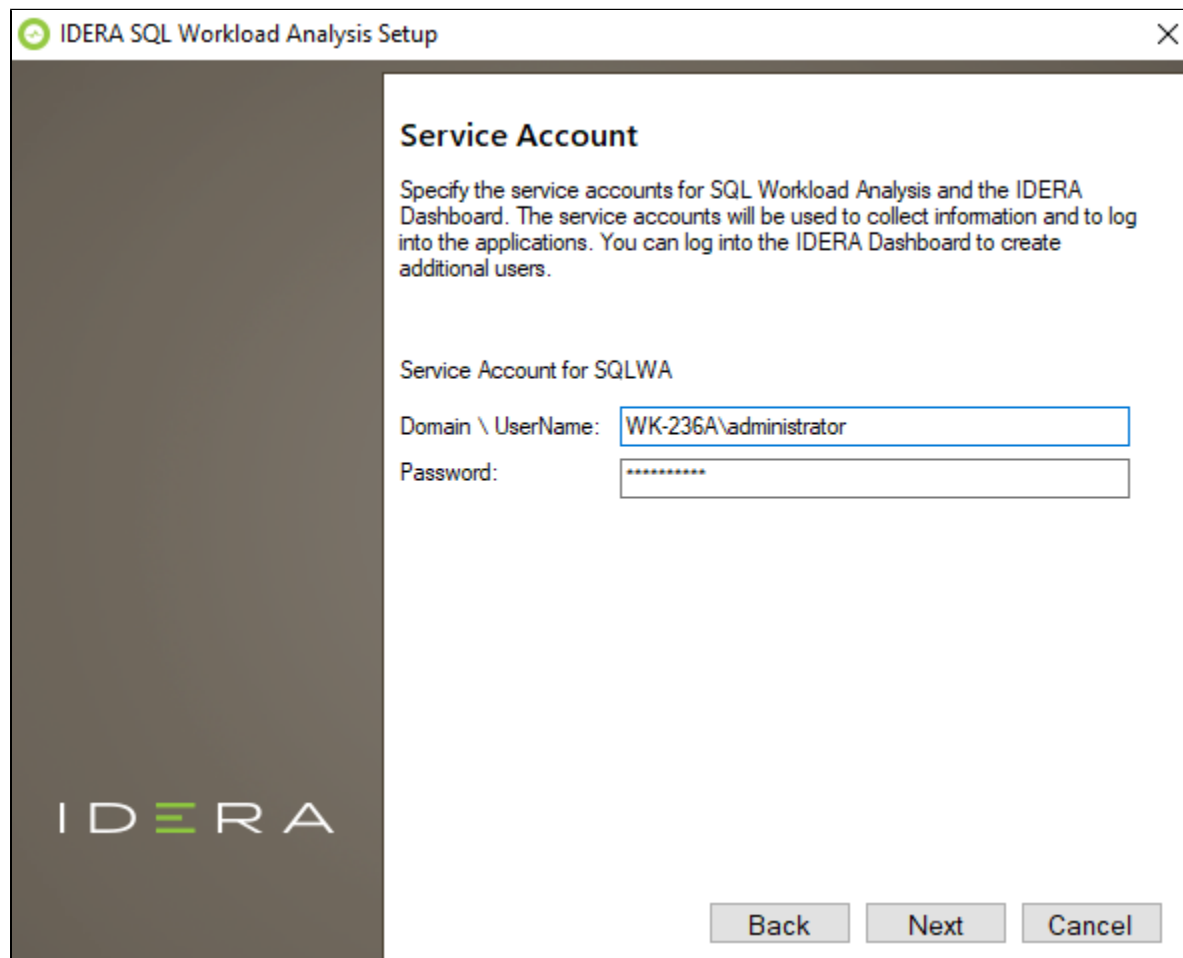
Back Next Cancel

Select a Windows user account to use for the service account

SQL Workload Analysis uses the service account to communicate with the monitored SQL Server. The IDERA Dashboard uses this account to connect, discover, and gather configuration information from SQL Servers in your environment. The installer grants the "Log on as a Service" right to the account that you specify, you can also choose to use different Windows credentials for each of the products.

To specify a service account:

1. On the Service Account window, type appropriate credentials in the provided fields under which the services run.
2. Click **Next**. SQL Workload Analysis verifies the connection before continuing.



The image shows a Windows-style setup window titled "IDERA SQL Workload Analysis Setup". The window has a dark grey sidebar on the left with the "IDERA" logo. The main content area is white and titled "Service Account". It contains a paragraph of instructions, a label "Service Account for SQLWA", and two input fields: "Domain \ UserName:" with the text "WK-236A\administrator" and "Password:" with masked characters. At the bottom right are three buttons: "Back", "Next", and "Cancel".

IDERA SQL Workload Analysis Setup

Service Account

Specify the service accounts for SQL Workload Analysis and the IDERA Dashboard. The service accounts will be used to collect information and to log into the applications. You can log into the IDERA Dashboard to create additional users.

Service Account for SQLWA

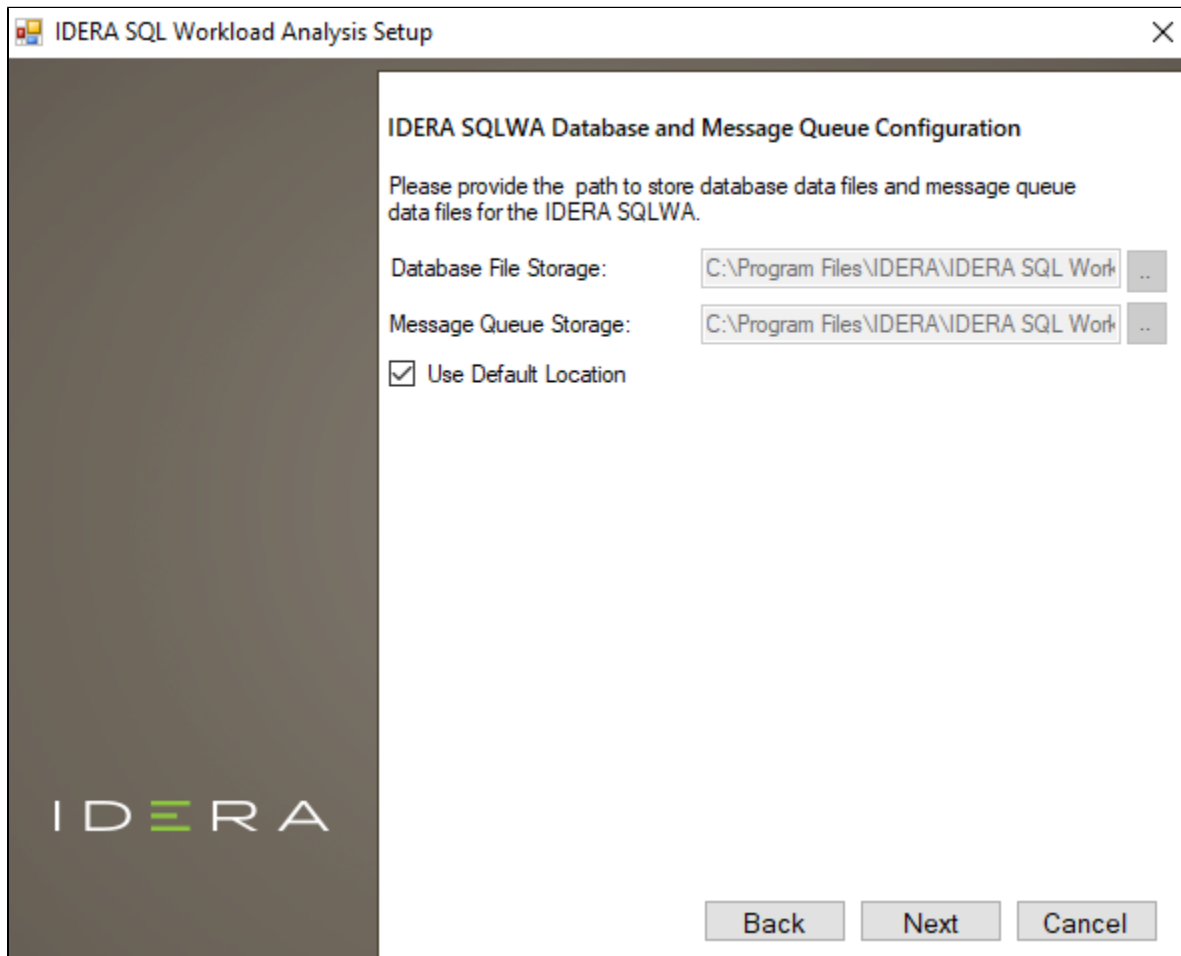
Domain \ UserName: WK-236A\administrator

Password: *****

Back Next Cancel

IDERA SQLWA Database and Message Queue configuration

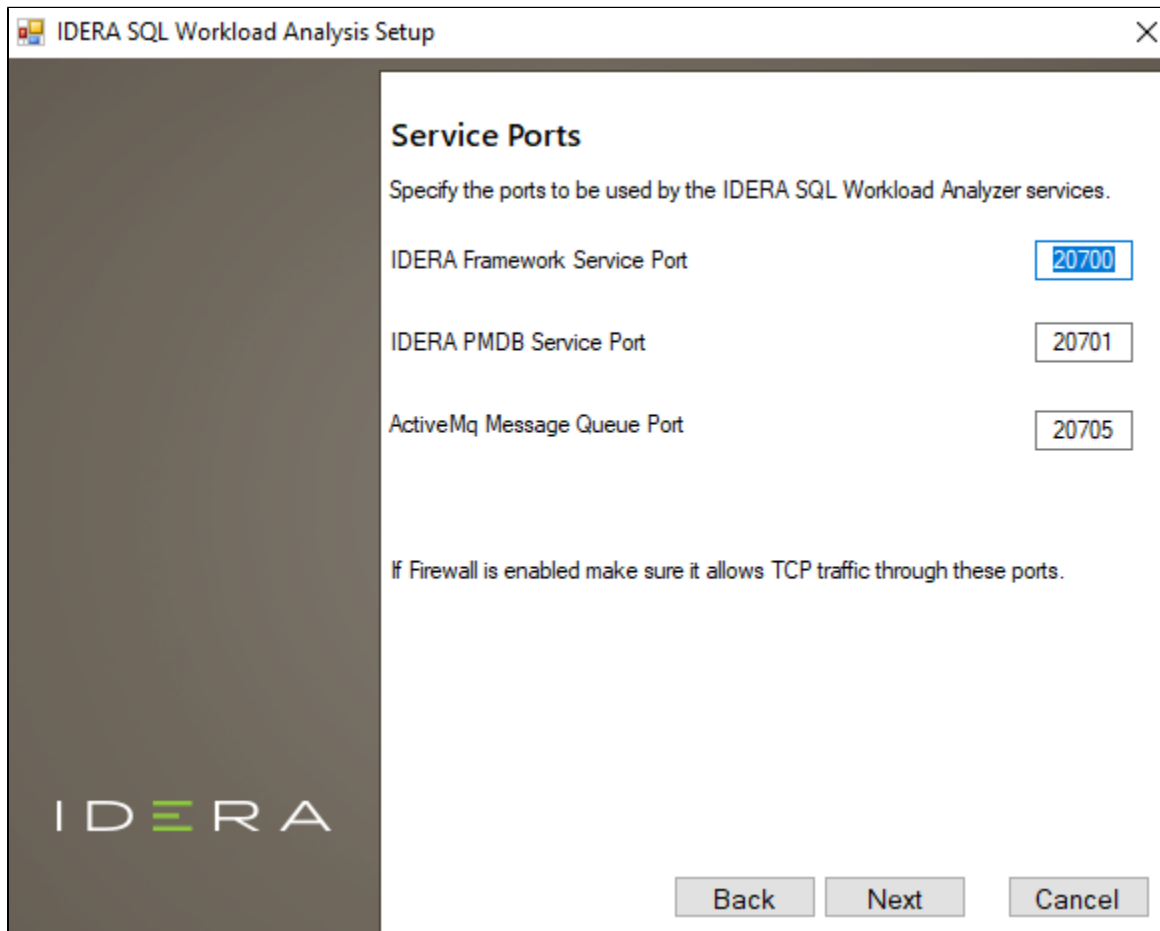
To change the storage paths for the Database File and the Message Queue, first uncheck the Default Location, and enter the new storage paths.



Service Ports

The SQL Workload Analyzer services use the following ports:

- IDERA Framework Service Port: **20700**
- IDERA SQLDB Service Port: 1433
- ActiveMq Message Queue Port: **20705**



The image shows a Windows-style dialog box titled "IDERA SQL Workload Analysis Setup". The dialog has a dark grey sidebar on the left with the "IDERA" logo. The main area is white and titled "Service Ports". It contains the instruction "Specify the ports to be used by the IDERA SQL Workload Analyzer services." and three input fields: "IDERA Framework Service Port" (value: 20700), "IDERA PMDB Service Port" (value: 20701), and "ActiveMq Message Queue Port" (value: 20705). Below these fields is a note: "If Firewall is enabled make sure it allows TCP traffic through these ports." At the bottom right are three buttons: "Back", "Next", and "Cancel".

IDERA SQL Workload Analysis Setup

Service Ports

Specify the ports to be used by the IDERA SQL Workload Analyzer services.

IDERA Framework Service Port: 20700

IDERA PMDB Service Port: 20701

ActiveMq Message Queue Port: 20705

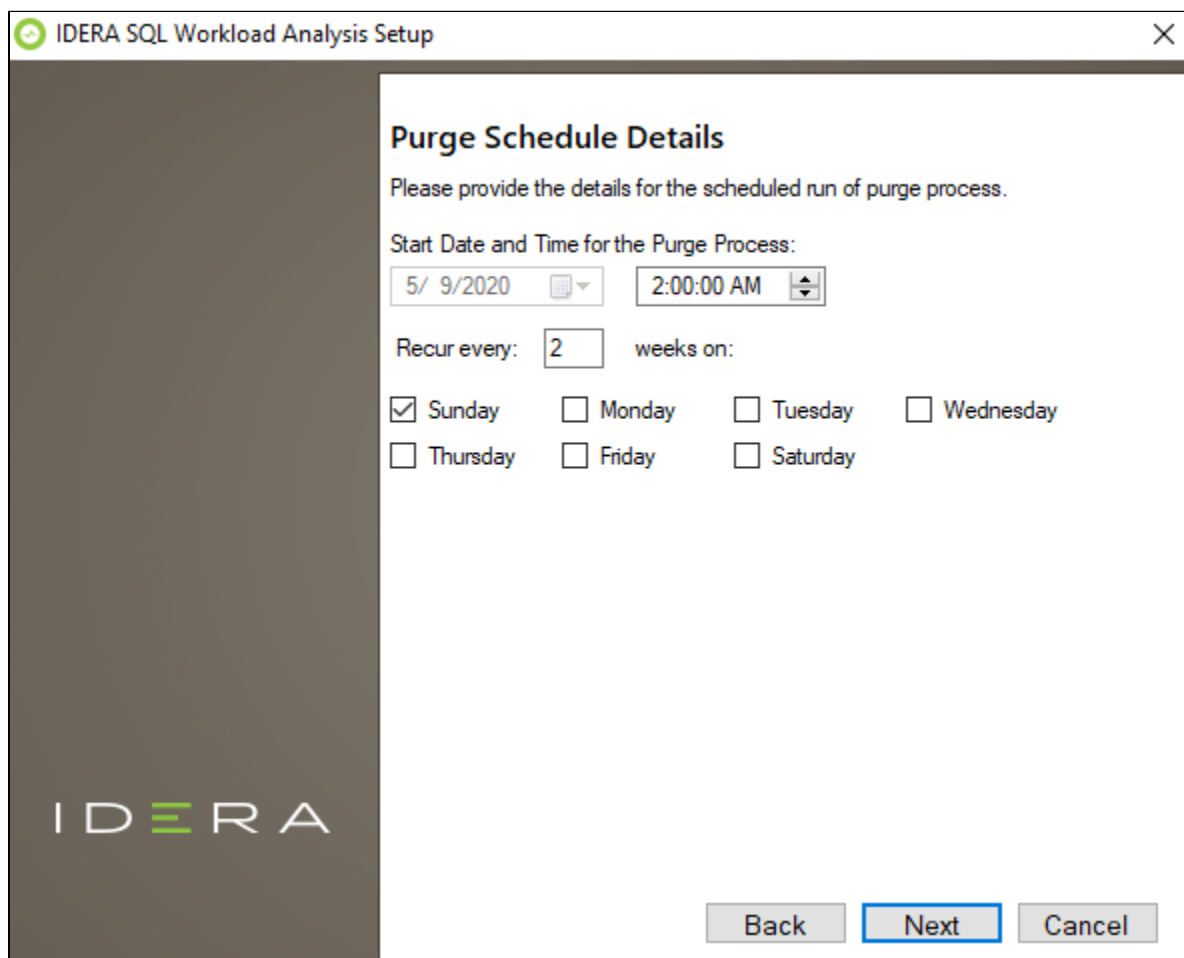
If Firewall is enabled make sure it allows TCP traffic through these ports.

Back Next Cancel

- ✓ Verify that the Firewall allows TCP (Transmission Control Protocol) traffic through your specified ports.

Purge Schedule Details

Configure the schedule to run the purge process in SQL Workload Analysis. The Purge Schedule Details is set at 2:00 AM, every 2 weeks, on Sunday, by default.





IDERA SQL Workload Analysis Setup

Purge Schedule Details

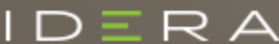
Please provide the details for the scheduled run of purge process.


Start Date and Time for the Purge Process:

5/ 9/2020  2:00:00 AM 

Recur every: weeks on:

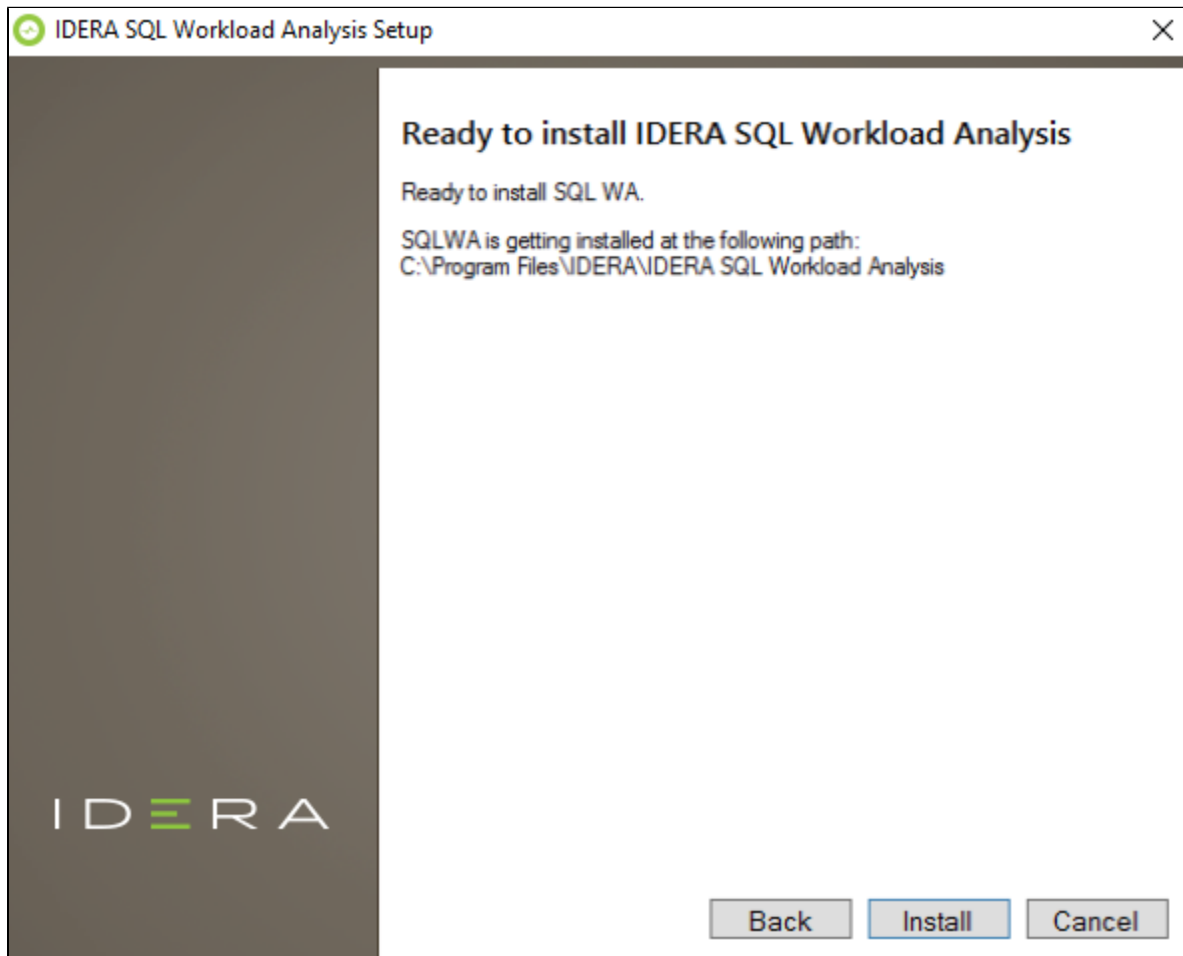
☒ Sunday ☐ Monday ☐ Tuesday ☐ Wednesday
☐ Thursday ☐ Friday ☐ Saturday



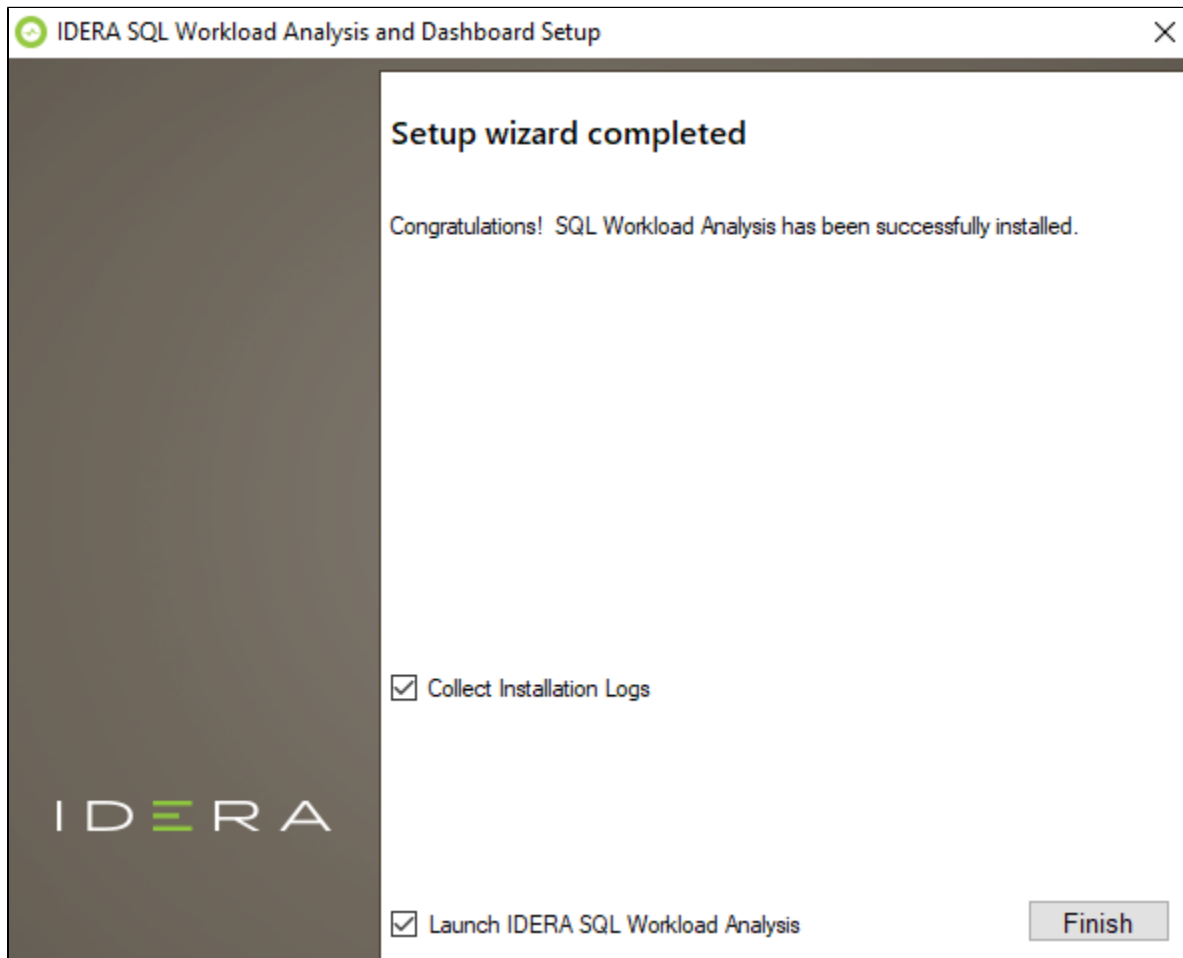
 The purge process does not affect historical data that is visible to users. It is a cleanup utility to improve stability.

Complete the install

The setup will grant the provided accounts access to SQL Workload Analysis and the IDERA Dashboard. The user that installs the IDERA Dashboard has access to this application by default as a Dashboard Administrator. You can choose whether you want other users to have access to the IDERA Dashboard in the Administration view. Click **Install** to indicate that you are ready to complete your installation with the configurations you specified. If you want to review or change any of your settings, click **Back**.



To complete the SQL Workload Analysis, click **Finish** to exit the IDERA Dashboard Setup Wizard.



To access the IDERA Dashboard and the SQL Workload Analysis web console, see [Log in the IDERA Dashboard and web console](#).



Uninstalling the IDERA Dashboard

If you wish to uninstall the IDERA Dashboard, make sure to unregister all products by clicking the **Manage Products** link of the Products widget in the Administration view. For additional information, see [Managing products in the IDERA Dashboard](#).

[IDERA](#) | [Products](#) | [Purchase](#) | [Support](#) | [Community](#) | [Resources](#) | [About Us](#) | [Legal](#)