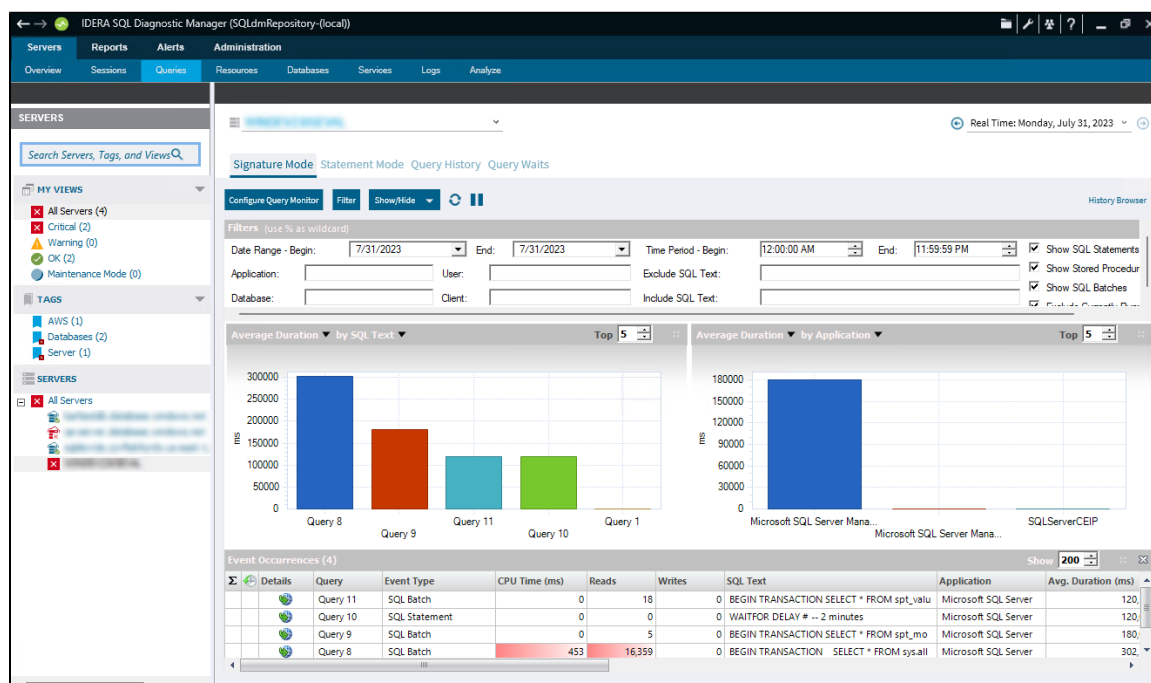


Monitor query performance

Query Monitor is a useful SQL Server tool that allows you to log and analyze queries. Query Monitor allows you to establish criteria for the queries you wish to capture, and filter those results to analyze the queries returned. Use the Query Monitor when diagnosing poor query performance on your SQL Server instance. You should monitor queries if your SQL Server instance performance is poor, as a way to diagnose potential query issues.



✓ To explore query data in multiple ways and get a handle on queries in your system, try our [New advanced query views](#) of the SQL Diagnostic Manager web console.

Access the Queries tab

Access the Queries tab by clicking the appropriate monitored SQL Server instance and then clicking the Queries tab.

Use the Queries tab

The Queries tab lists each event that occurs in the Query Monitor. For each event, among other details, SQL Diagnostic Manager lists the SQL text associated, start and end times, application, user information, and client computer associated with the event. Fields with SQL text hold 255 characters of text. To view the full SQL text, right-click the field and then select the appropriate option. SQL Diagnostic Manager automatically assigns a name to each of your queries starting with Query 1. The name provides context to your query when switching from [Signature Mode](#), [Statement Mode](#), [Query History](#), and [Query Waits](#) views.

i Query names are not persistent. They are different on different desktops and sessions on the same desktop.

The **Event Occurrences** chart at the bottom of the view displays the number of T-SQL statements, stored procedures, and SQL batches captured in the trace.

✓ Right-click any column heading to pick additional columns to display.

The Sigma () character indicates that the data in this row is at least partially composed of aggregated data. This means that the data is condensed into a day-length summary and some precision about the individual statements, client computers, and users is suppressed. Rows in this view with the Sigma character may include a mix of aggregated and non-aggregated data.

Understand the difference between Signature Mode and Statement Mode

Signature and Statement modes are two different ways to group and view your queries. You can toggle between each mode to see the differences.

Signature Mode (default Queries view)

All active queries are automatically reduced to the signatures (parameters are stripped) and grouped accordingly.



You can also view signatures in the [Advanced query signature view](#) of the SQL Diagnostic Manager web console.

Statement Mode

All queries are presented exactly as the Query Monitor Trace collects them.

Use Filter Settings to customize your view

Use the Filters section of the Signature Mode, Statement Mode, and Query History views to pick the time range, what to include in the table, and even specific applications, client computers, databases, SQL text, and users to view.

You can access advanced filters by clicking the **Filter** button. These options include the ability to filter out specific applications, databases, and SQL text from your query collection.



The **Include incomplete queries** filter in the Signature Mode and Statement Mode views is disabled by default. If you would like to include data with null values in these views, select the **Include incomplete queries** check box in the Filters section.



You can hide and unhide the Filter and List areas of the Query Monitor views in the ribbon.