

Amazon RDS Overview

The Amazon RDS Overview tab includes the following five screens:

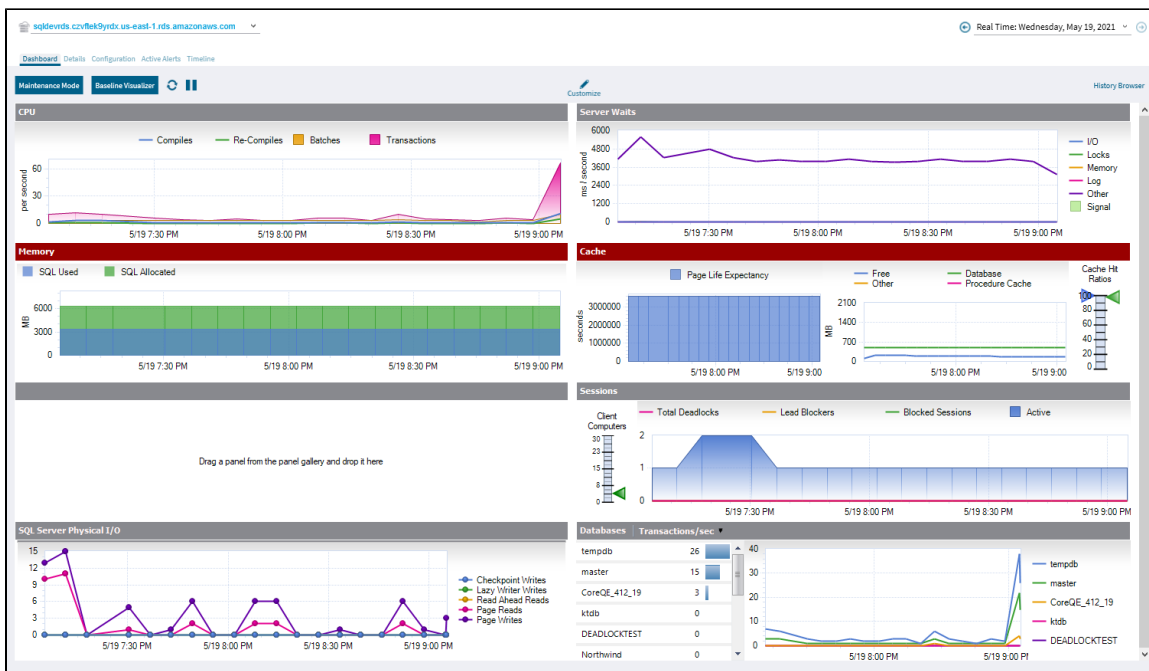
- Dashboard
- Details
- Configuration
- Active Alerts
- Timeline

Dashboard

The Dashboard view shows you an overview of the instance. The overview tab displays the following graphs, by default:

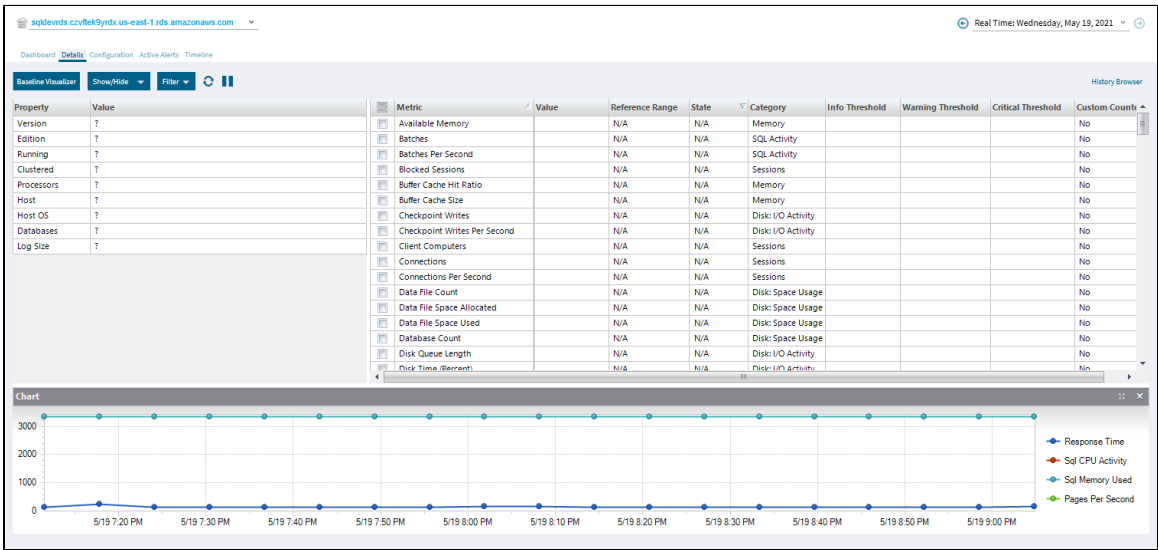
- CPU
- Server Waits
- Memory
- Cache
- Network
- Sessions
- SQL Server Physical I/O
- Databases

You can add or edit the layout of your Dashboard by clicking Customize. In the Customize Dashboard screen, click View Panel Gallery, and drag the panels from the right side to your Dashboard screen on the left.



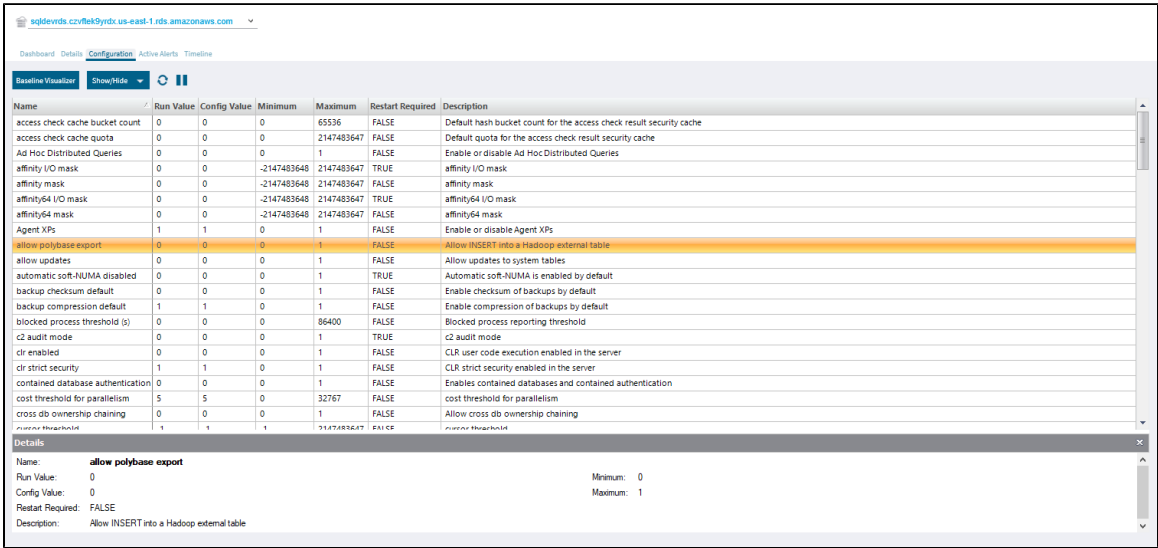
Details

The Details screen shows the properties of the monitored Amazon RDS server, including the Version, Edition, Host OS, Databases, and Log Size. On the right screen, you can review the metrics list, check any metric to add it in the chart located at the bottom of the screen.



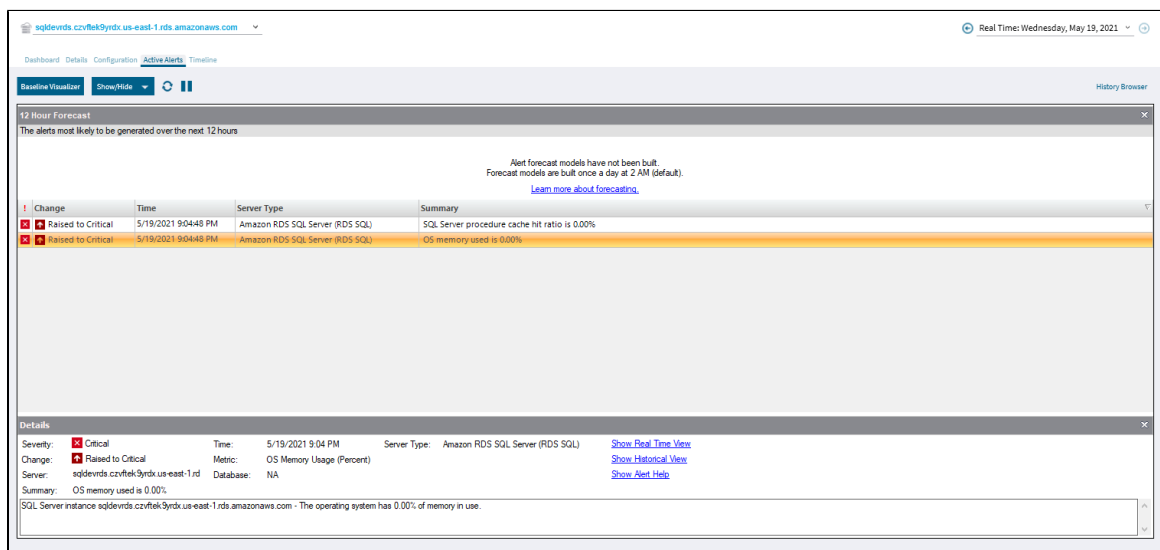
Configuration

The Configuration view allows you to view the SQL Server configuration settings for the selected Amazon RDS instance. When diagnosing problems with SQL Server performance, it is helpful to see how it is configured. In addition, SQL Diagnostic Manager offers the ability to edit some configuration settings, depending on the option selected.



Active Alerts

The Active Alerts view allows you to check a list of all the active alerts as of the last data collection. Click any alert in the list to view details at the bottom of the window.



Timeline

The Timeline view provides a chronological chart of events that affect your monitored SQL Server instance. The view details the point in time for this monitored SQL Server instance when an alert occurred, including custom counter alerts.

