

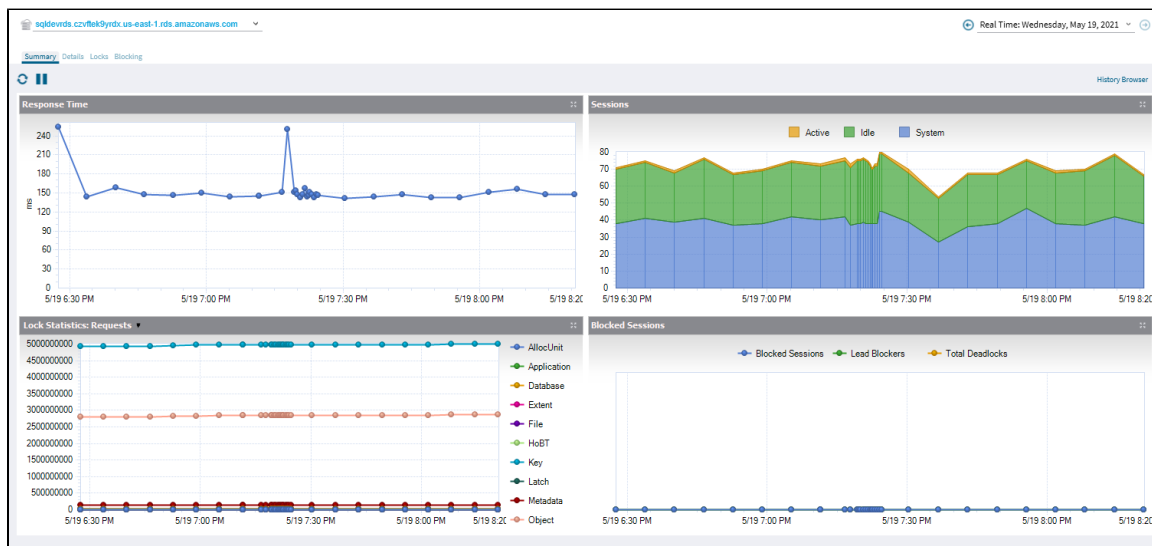
Amazon RDS Sessions

The Sessions tab includes the Summary, Details, Locks, and Blocking screens.

Summary

The Sessions Summary shows real-time charts for your monitored Amazon RDS server, the following charts are displayed in this view:

- Response Time
- Sessions
- Blocked Sessions
- Max Session Percent
- Lock Statistic



Details

The Sessions Details view provides an in-depth analysis of sessions running on your monitored Amazon RDS server.

The screenshot displays the Amazon RDS Sessions Details view. It features a table of session details and a details panel for a specific session.

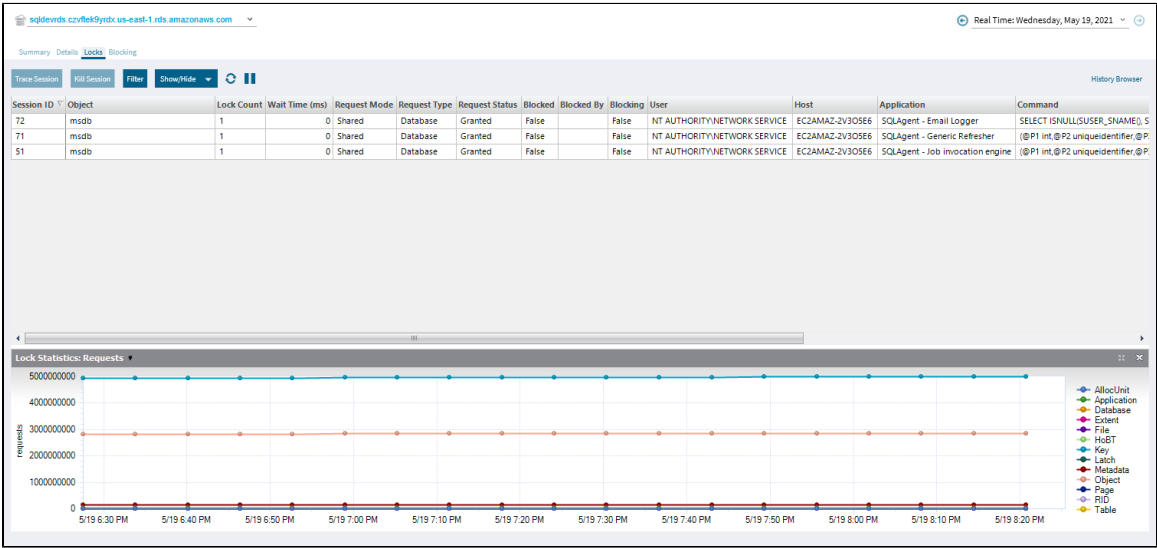
Session ID	Type	Blocked By	Blocking	CPU (ms)	Memory Usage (kb)	Physical I/O	Wait Time (ms)	User	Host	Database	Status	Open Transactions	Command	Application	Wait Type	Wait Res
85	SQL Agent	False	False	16	24	0	0	sqldev	DESKTOP-0FSTKTF	master	Sleeping	0		Microsoft SQL Server Management Studio		
72	SQL Agent	False	False	15	24	0	0	NT AUTHORITY\NETWORK SERVICE	EC2AMAZ-2V30SE6	msdb	Sleeping	0		SQLAgent - Email Logger		
71	SQL Agent	False	False	109	24	98	0	NT AUTHORITY\SYSTEM	EC2AMAZ-2V30SE6	msdb	Sleeping	0		SQLAgent - Generic Refresher		
70	SQL Agent	False	False	0	24	0	0	NT AUTHORITY\SYSTEM	EC2AMAZ-2V30SE6	master	Sleeping	0		RdsAdminService		
69	SQL Agent	False	False	0	24	0	0	NT AUTHORITY\SYSTEM	EC2AMAZ-2V30SE6	master	Sleeping	0		RdsAdminService		
66	SQL Agent	False	False	0	24	2	0	NT AUTHORITY\SYSTEM	EC2AMAZ-2V30SE6	master	Sleeping	0		RdsAdminService		
65	SQL Agent	False	False	0	0	0	0	NT AUTHORITY\SYSTEM	EC2AMAZ-2V30SE6	master	Sleeping	0		RdsAdminService		
64	SQL Agent	False	False	0	0	0	0	NT AUTHORITY\SYSTEM	EC2AMAZ-2V30SE6	master	Sleeping	0		RdsAdminService		
63	SQL Agent	False	False	0	0	0	0	NT AUTHORITY\SYSTEM	EC2AMAZ-2V30SE6	master	Sleeping	0		RdsAdminService		
62	SQL Agent	False	False	0	0	0	0	NT AUTHORITY\SYSTEM	EC2AMAZ-2V30SE6	master	Sleeping	0		RdsAdminService		
61	SQL Agent	False	False	0	0	0	0	NT AUTHORITY\SYSTEM	EC2AMAZ-2V30SE6	master	Sleeping	0		RdsAdminService		
60	SQL Agent	False	False	0	0	0	0	NT AUTHORITY\SYSTEM	EC2AMAZ-2V30SE6	master	Sleeping	0		RdsAdminService		

The details panel for session 72 shows the following information:

- Connection:** User Session: 72, Status: Sleeping, Host: EC2AMAZ-2V30SE6, Net Library: LPC, Network Address: 0E19F3D1A019, User: NT AUTHORITY\NETWORK SERVICE, Execution Context: SQLAgent - Email Logger, Database: msdb, Transaction Isolation Level: read committed.
- Usage:** Login Time: 4/8/2021 3:35:18 AM, Last Activity: 4/8/2021 3:35:18 AM, Physical I/O: 0 (0 delta), CPU (ms): 15 (0 delta), Memory (kb): 24, Open Transactions: 0.
- Lock Information:** Wait Time (ms): 0, Resource: False, Blocking: 0, Blocked By: 0, Blocking Count: 0.
- Tempdb Usage:** Version Store Elapsed Seconds: 0, Space Used in kb (Alloc / Dealloc): 0 (0 / 0), Session User Space: 0 (0 / 0), Task User Space: 0 (0 / 0), Session Internal Space: 0 (0 / 0), Task Internal Space: 0 (0 / 0).
- Last Command:** SELECT ISNULL(USER_SNAME(), USER_NAME())

Locks

On the Locked Sessions view, you can see which locks are causing data availability problems and unacceptable responses. At the bottom of the screen, the **Lock Statistics** chart has the same function as a non-cloud monitored server.



Blocking

The Blocking view provides a blocking tree, along with Block Reports, Deadlock Reports information. At the bottom of the screen, the Block Sessions chart represents the Blocked Sessions, Lead Blockers, and Total Deadlocks information.