

# Amazon RDS Queries

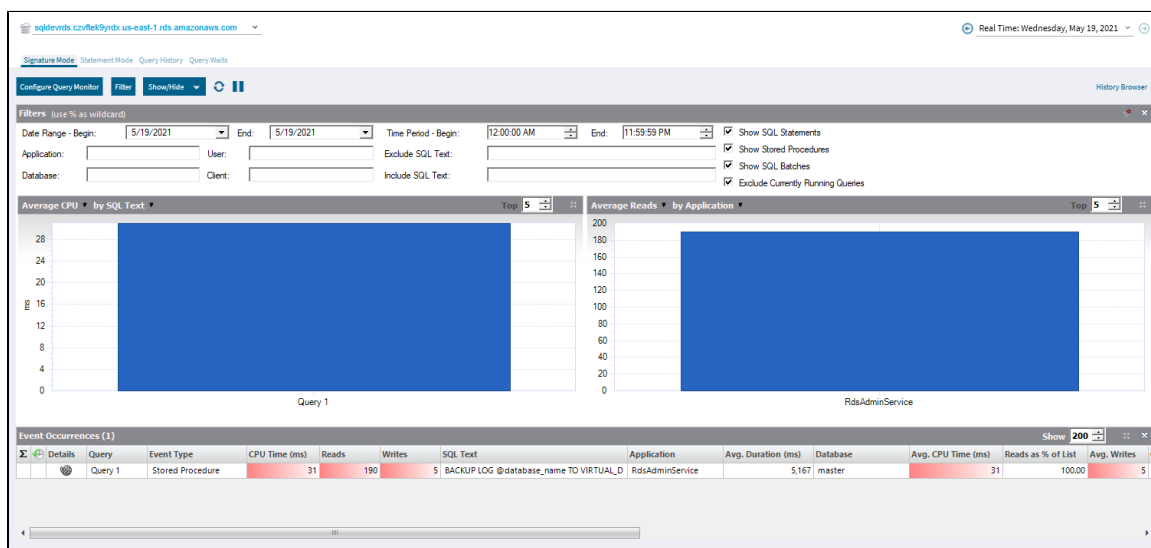
Amazon RDS Query Monitor is a useful SQL Server tool that allows you to log and analyze queries. Query Monitor allows you to establish criteria for the queries to analyze the queries returned by:

- Discovering the worst performing queries.
- Visualizing complex SQL Queries.
- Pinpointing root causes.
- Generating recommendations to improve the performance of SQL databases and queries.

The Sessions tab includes the Signature Mode, Statement Mode, Query History, and Query Waits.

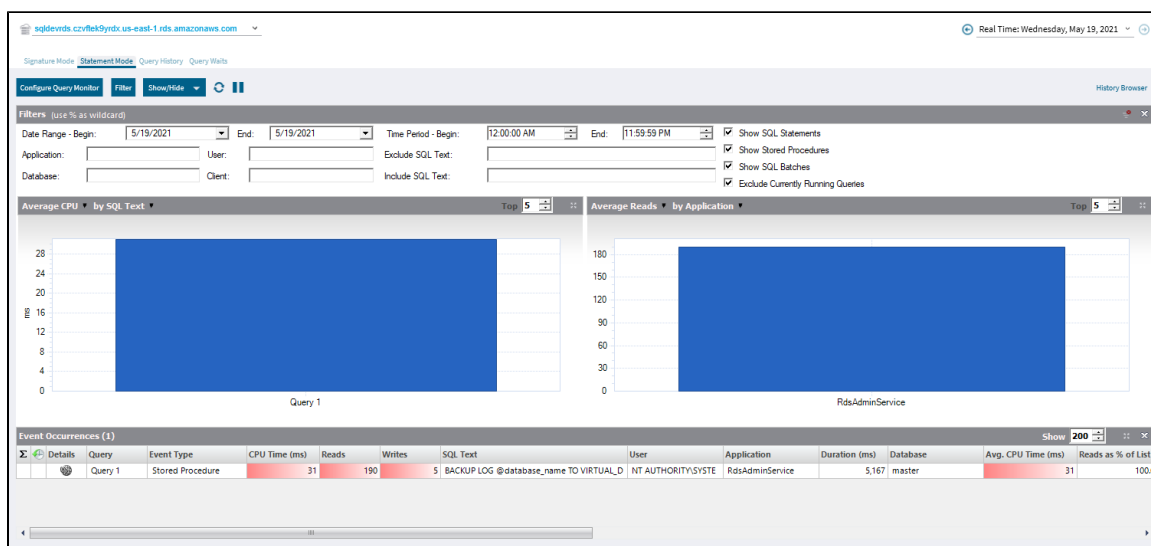
## Signature Mode

The Query Monitor Signature Mode view includes all active query information, automatically reduced to the signatures grouped accordingly.



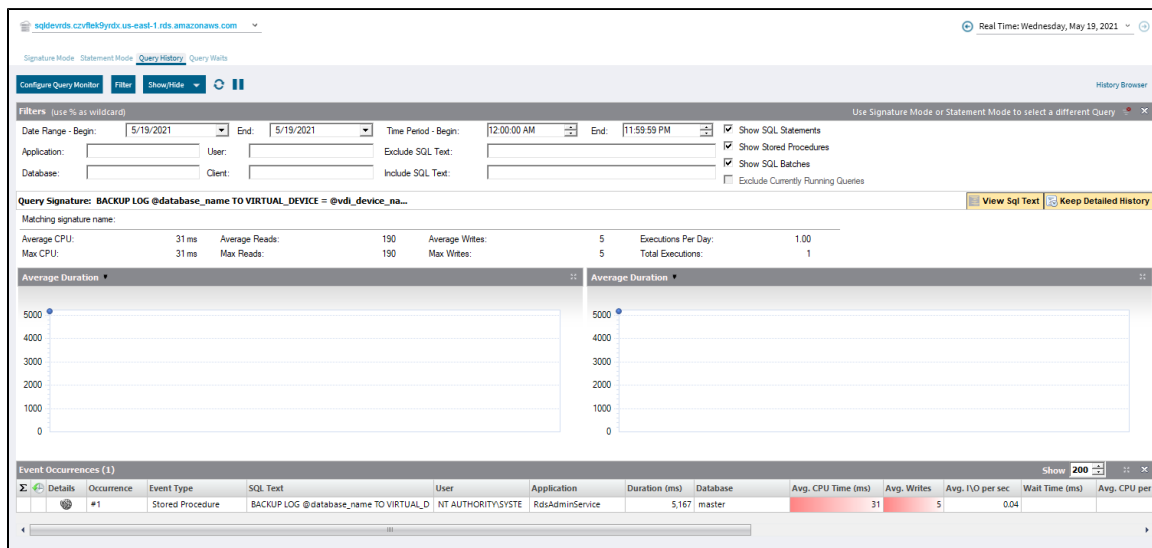
## Statement Mode

The Statement Mode view is where you go to drill down into a specific execution of a particular query. It provides all the detail you may need to diagnose a specific problem with a query.



## Query History

Query History allows you to track the performance of a query over time.



## Query Waits

The Query Waits view displays the queries on your SQL Server instance with the longest wait times. By default, the chart at the bottom of the view displays the query waits over time and allows you to further investigate based on Statements, Applications, Databases, Clients, Sessions, and Users.