

SQL Data Compare Application Settings

Application settings allow you to tweak the behavior of the IDERA SQL Data Compare and can be accessed from the drop down menu off of the top left corner product icon or from the Application Settings link at the top left corner on the Workspace tab.

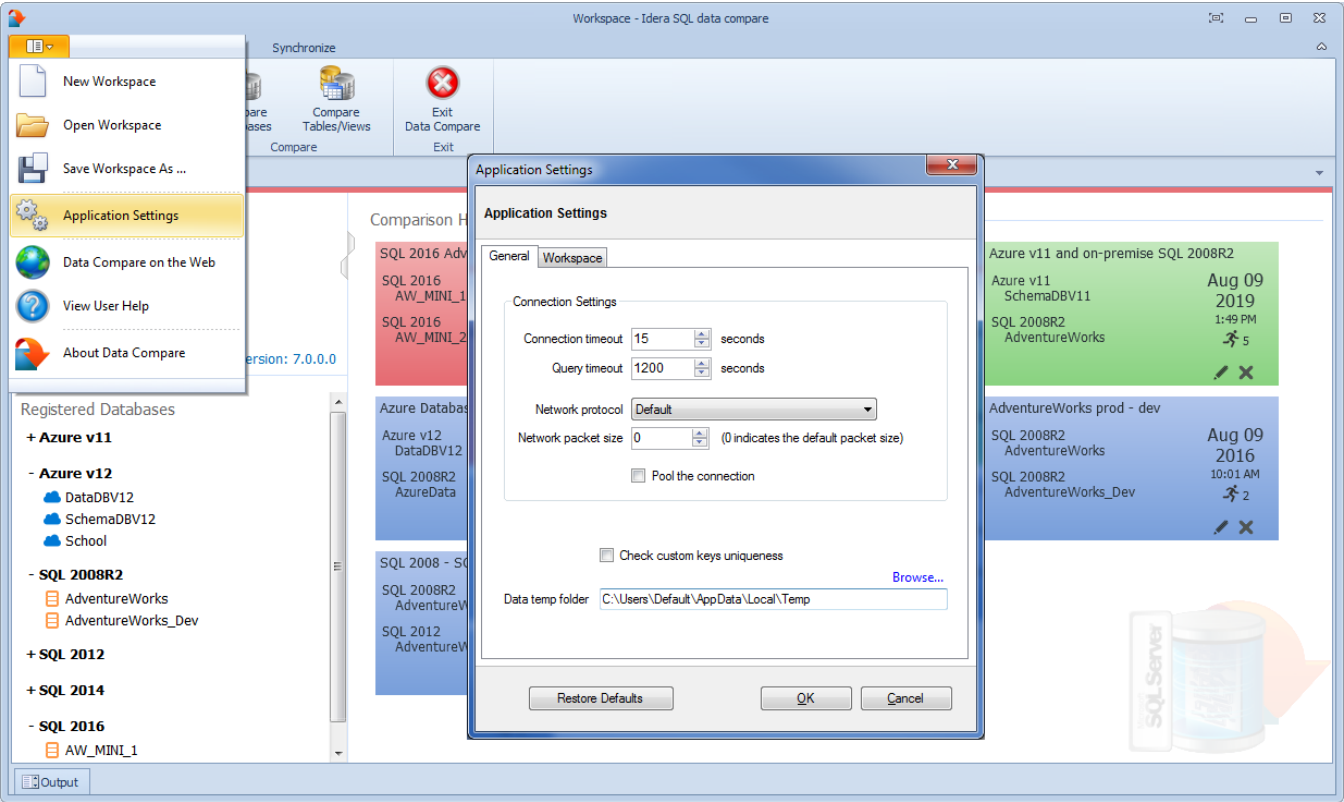
Under the General tab, you will find:

- **Connection Settings** If you are reading this you are already familiar with the database connection settings. Under normal circumstances you do not need to change any of these settings.
- **Check custom keys uniqueness** Before comparing the data IDERA SQL Data Compare will pair the rows based on a unique key that is automatically determined. However, you can choose to pair the rows based on some custom key that you define either because the tables in question do not have a predefined unique key or because you wish to use a different key. In this case there is an option to validate the chosen key. By default the validation simply checks for type compatibility. If you wish to ensure that the chosen key is unique you can check this option. Please note however that depending on the size of those tables the validation for uniqueness may take from a few seconds to minutes to complete.
- **Data temp folder** Indicates the temp folder that Data Compare uses for row and script serialization. Note that if you change the temp folder, you need to restart Data Compare for the new setting to take effect.

Under the Workspace tab you will find:

- **Sessions** Contains settings related to comparison sessions:
 - **Save sessions** By default it is checked. It instructs the IDERA SQL Data Compare to store comparison sessions for future use. A stored session contains all the necessary information to allow you to repeat the comparison with one click. Stored sessions will appear on the main panel of the Workspace tab.
 - **Max sessions kept in history** By default IDERA SQL Data Compare will store the last 25 comparison sessions. Although there is no noticeable performance difference on application launch related to the number of sessions stored you may choose to set this parameter to a lower number. Allowable values are 1 to 25.
 - **Sort sessions by** Change the order that stored sessions appear on the workspace tab.
- **Layout** Allows you to change the color schema of a session. You can choose from built-in colors or pick custom ones.

To revert all settings back to their default values, click **Restore Defaults**.



Total compare from data to schema with IDERA [SQL Comparison Toolset](#). [Learn more](#) >>

| | | | | | | | |
|-------------------------------|--------------------------|--------------------------|-------------------------|---------------------------|--------------------------|---------------------------|-----------------------|
| IDERA Website | Products | Purchase | Support | Community | About Us | Resources | Legal |
|-------------------------------|--------------------------|--------------------------|-------------------------|---------------------------|--------------------------|---------------------------|-----------------------|