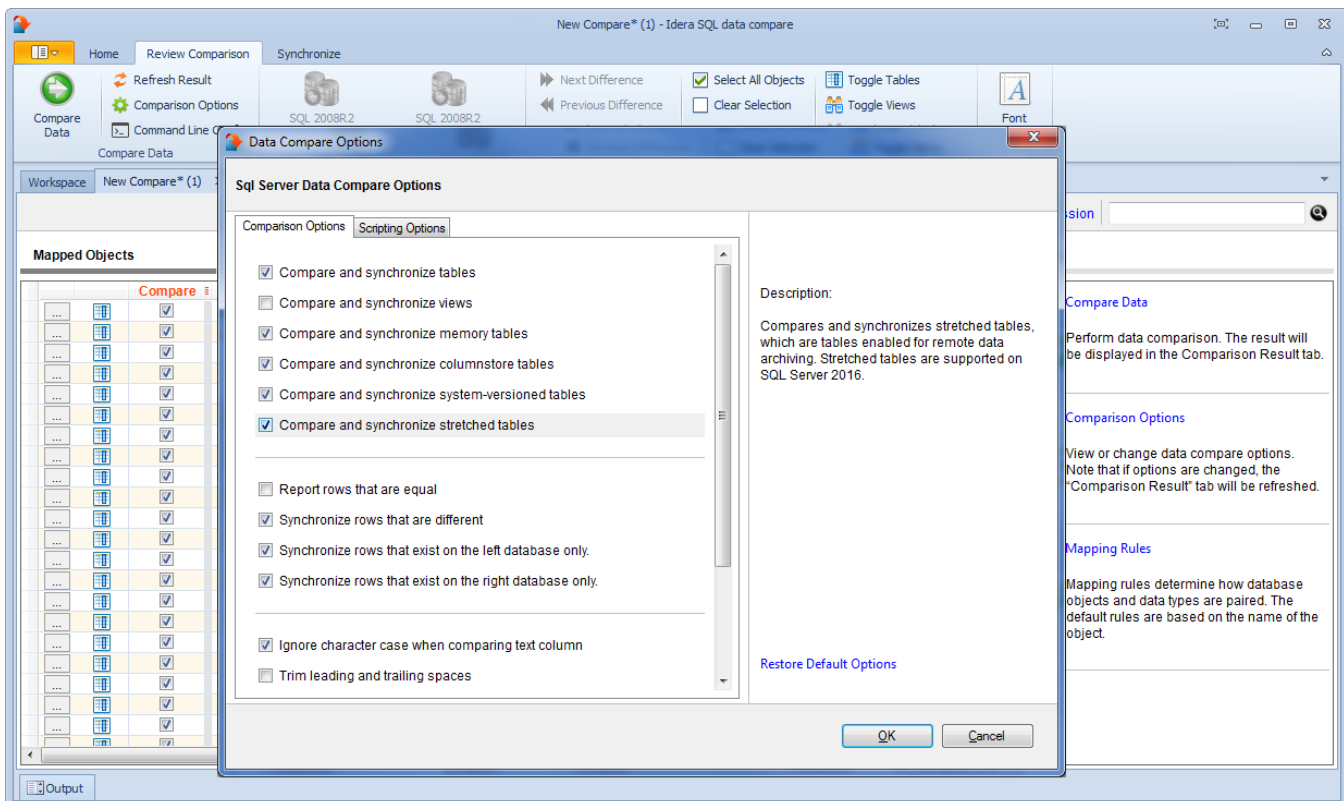


# SQL Data Compare Comparison Options

IDERA SQL Data Compare exposes a series of options that allow you to customize the way the comparison is performed. On mouse over a description of the highlighted option is displayed on the right panel of the options window.

You can access the Data Compare options from the Compare Databases and Compare Tables dialog windows before the object mapping operation. After the objects (tables and indexed views) have been mapped you can access the Comparison Options from the Review Comparison tab of the ribbon as well as from the action links on the right panel of the Mapped Objects tab.



Total compare from data to schema with IDERA [SQL Comparison Toolset](#). [Learn more >>](#)

<a href="#">IDERA Website</a>	<a href="#">Products</a>	<a href="#">Purchase</a>	<a href="#">Support</a>	<a href="#">Community</a>	<a href="#">About Us</a>	<a href="#">Resources</a>	<a href="#">Legal</a>
-------------------------------	--------------------------	--------------------------	-------------------------	---------------------------	--------------------------	---------------------------	-----------------------