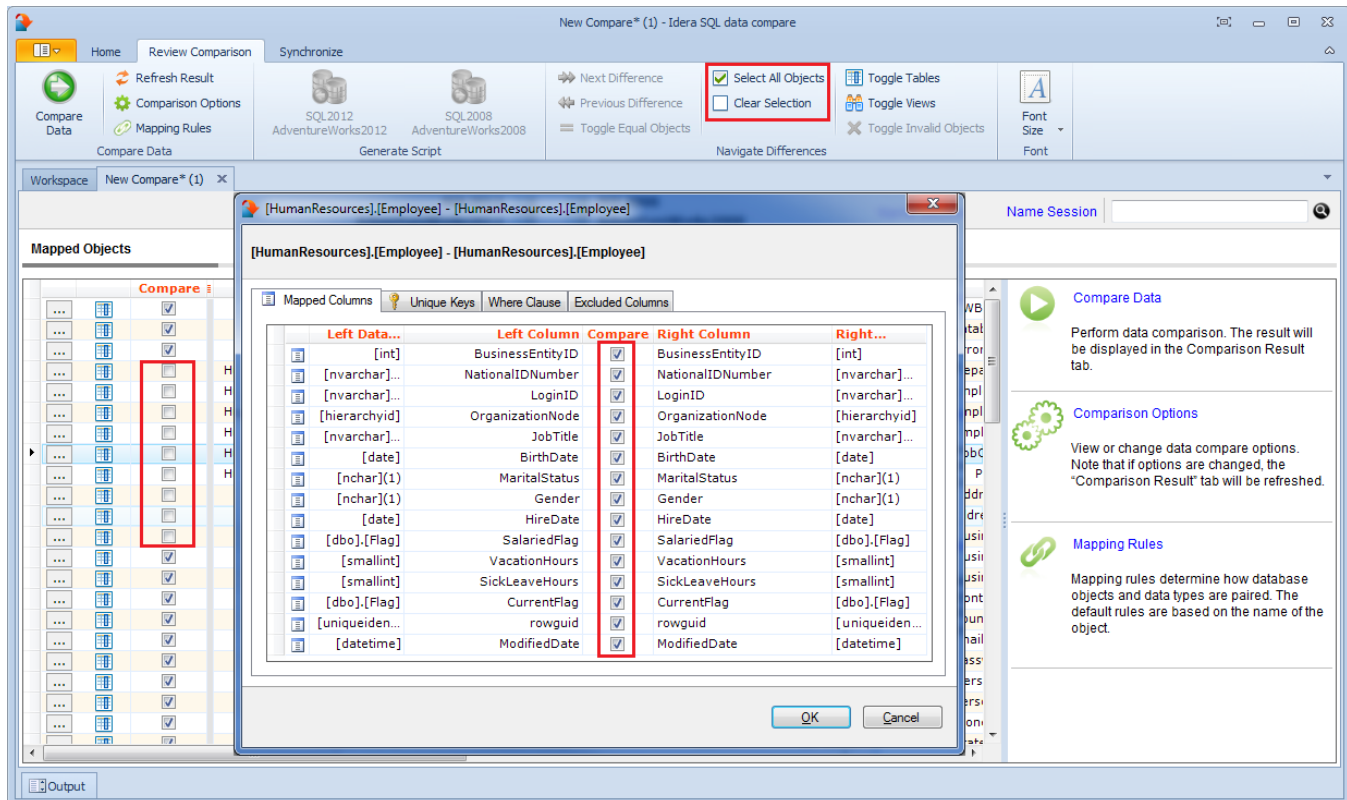


## SQL Data Compare Include/Exclude Objects

The first step in customizing your comparison after the objects have been paired is to choose which objects you wish to include in the comparison and for each object pair which columns you wish to include or exclude. The options available in IDERA SQL Data Compare:

- **Include/Exclude object pairs.** By default all objects (tables and indexed views) are marked to be included in the comparison. You can decide which pairs you want to include /exclude by checking / un-checking the **Compare** checkbox for each object pair. To de-select or select all object pairs in one click you can use the **Select all objects** and **Clear selection** buttons in the ribbon.
- **Include/Exclude mapped columns.** For each object pair you can click on the details button (the first column of the Mapped Objects grid) to further customize the comparison. By default all the mapped columns are marked to be included in the comparison. However, you may choose to exclude certain columns from the comparison (example: image or text type columns that would take a long time to compare). To exclude columns simply uncheck the **Compare** checkbox for that column pair. Important: note that the column(s) that are part of the key that has been selected to be used as the comparison key will always be included in the comparison regardless of whether you have checked or unchecked them in the Mapped Columns tab.



Total compare from data to schema with IDERA [SQL Comparison Toolset](#). [Learn more](#) >>

<a href="#">IDERA Website</a>	<a href="#">Products</a>	<a href="#">Purchase</a>	<a href="#">Support</a>	<a href="#">Community</a>	<a href="#">About Us</a>	<a href="#">Resources</a>	<a href="#">Legal</a>
-------------------------------	--------------------------	--------------------------	-------------------------	---------------------------	--------------------------	---------------------------	-----------------------