

# Configure database thresholds

The Database Threshold Configuration dialog allows you to set alert thresholds for selected databases on your SQL Server instance. Not all alerts are available for database-specific application. The following alerts include database-specific settings:

- Database Full (Percent)
- Database Full (Size)
- Log Full (Percent)
- Log Full (Size)

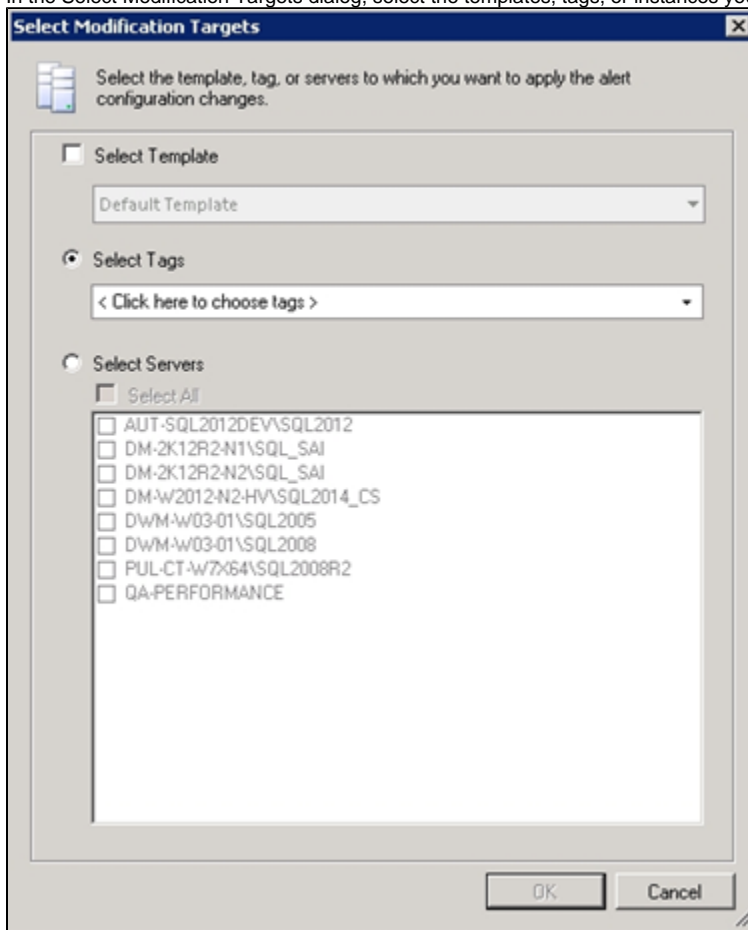
Use the **Advanced** button to set [how and when alerts are raised](#) by limiting the number of alerts and notifications generated.

## To add a database for specific alert configuration:

1. Right-click a SQL Server instance in the Servers tree.
2. Select **Configure Alerts**.
3. Select the database-specific metric you want to edit from the list in the **Alert Configuration** window.
4. On the Configuration tab, click **Add**.
5. Select the database from the available drop-down list.
6. Make the appropriate changes to your alert configuration for this database, and then click **OK**. SQL Diagnostic Manager now displays that database in the list on the Configuration tab.
7. Click **OK** to accept your changes.

## To edit the alert threshold configuration for a database:

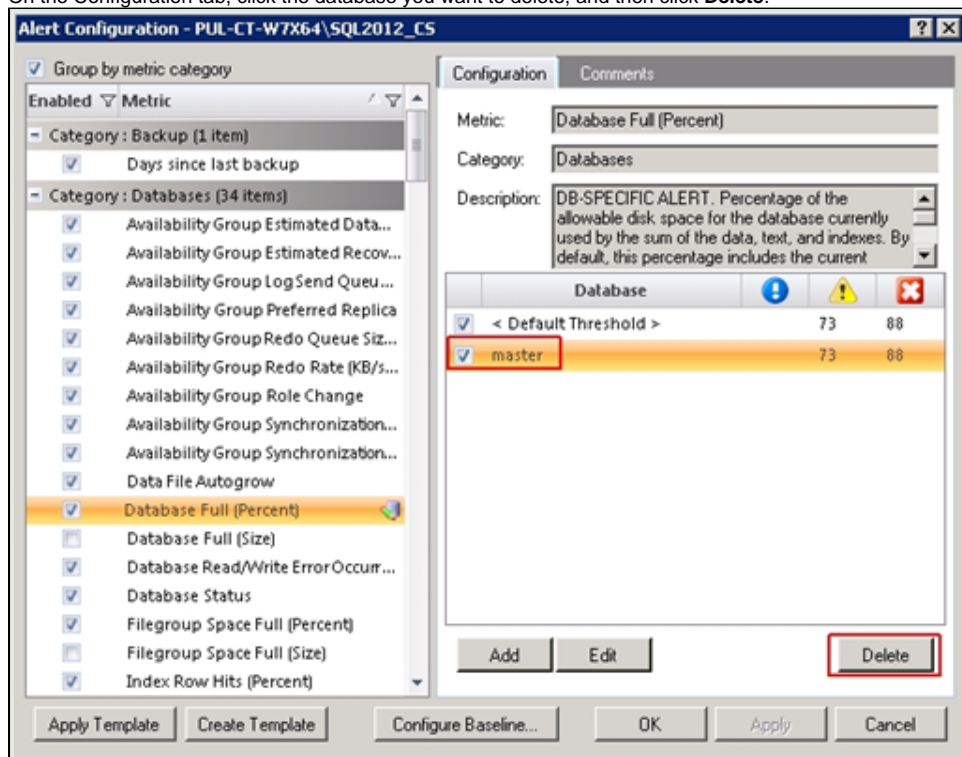
1. Right-click a SQL Server instance in the Servers tree.
2. Select **Configure Alerts**.
3. Select the database-specific metric you want to edit from the list in the **Alert Configuration** window.
4. On the Configuration tab, click the database you want to configure, and then click **Edit**.
5. Change the alert thresholds by moving the arrows to the appropriate levels or by double-clicking the value and typing a new threshold level, and then click **OK**.
6. Click **Apply**.
7. *If you want SQL Diagnostic Manager to replicate your edits to other monitored SQL Server instances, tags, or templates*, click **Yes**.
8. In the Select Modification Targets dialog, select the templates, tags, or instances you want to include, and then click **OK**.



9. Click **OK** to accept your changes.

## To delete the alert threshold configuration for a database:

1. Right-click a SQL Server instance in the Servers tree.
2. Select **Configure Alerts**.
3. Select the metric from which you want to remove the specific database from the list in the **Alert Configuration** window.
4. On the Configuration tab, click the database you want to delete, and then click **Delete**.



5. Click **Yes** in the confirmation window.
6. Click **Apply**.
7. **If you want to delete the same database from any other SQL Server instances, tags, or templates**, click **Yes**.
8. In the Select Modification Targets dialog, select the templates, tags, or instances you want to apply the same modification, and then click **OK**.
9. Click **OK** to accept your changes.

SQL Diagnostic Manager identifies and resolves SQL Server performance problems before they happen. [Learn more >>](#)

<a href="#">IDERA Website</a>	<a href="#">Products</a>	<a href="#">Purchase</a>	<a href="#">Support</a>	<a href="#">Community</a>	<a href="#">About Us</a>	<a href="#">Resources</a>	<a href="#">Legal</a>
-------------------------------	--------------------------	--------------------------	-------------------------	---------------------------	--------------------------	---------------------------	-----------------------