


Installing the IDERA Dashboard

This section guides you through the installation of the IDERA Dashboard, a common technology framework for IDERA products.

Before you install the IDERA Dashboard, be sure to have:

- A local administrator account on the machine where you are installing the product.
- Microsoft .NET 4.0 Framework or later installed.

 The IDERA Dashboard Web Application service comes with SSL already set up. By default, SSL works with a self-signed certificate. This certificate can be used for encryption only and does not prove the identity of the server.

That default certificate is not signed by any well-known Certification Authority (CA), and is intended only for use in testing purposes. When a user attempts to open the SSL version of the IDERA Dashboard Web interface, a warning appears in the browser window. For more information about running the IDERA Dashboard over SSL, see [Run IDERA Dashboard over SSL \(HTTPS\)](#).

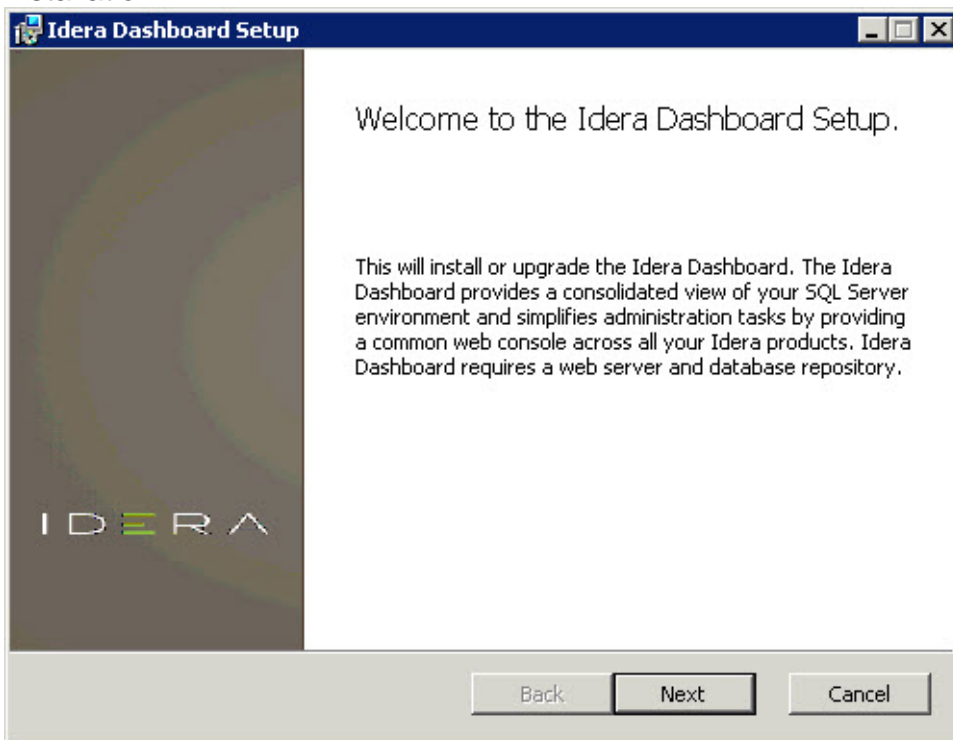
Start your installation

You can install the IDERA Dashboard on any computer that meets or exceeds the product requirements.

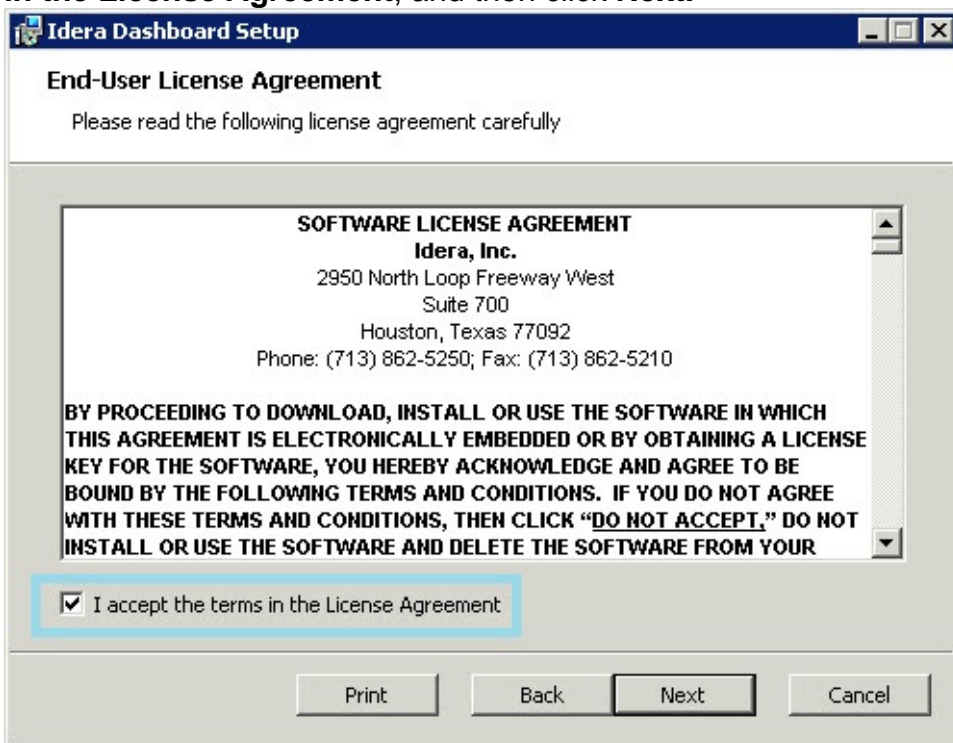
To start installing the IDERA Dashboard:

1. Run `IderaDashboard` in the root of the installation kit.

2. On the **Welcome to the IDERA Dashboard Setup Wizard**, click **Next** to continue with installation.

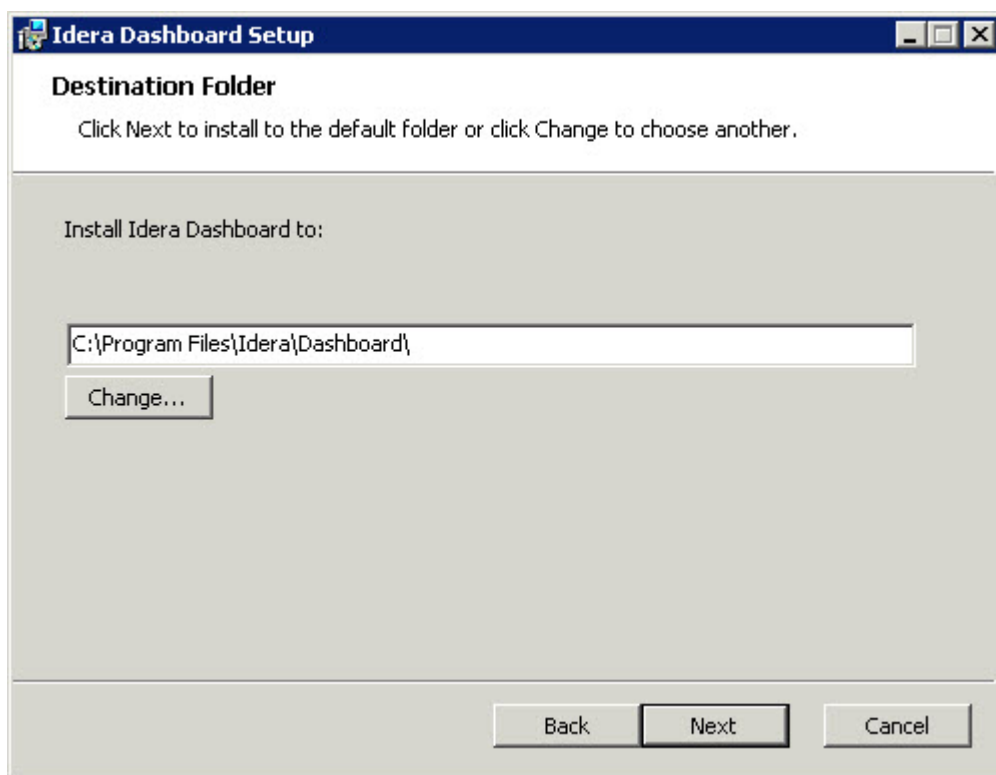


3. Review the license agreement. To accept this license agreement, click **I accept the terms in the License Agreement**, and then click **Next**.



Select an installation location

You can use the default install location or specify a different path (**Change**). For your first install, we recommend using the default location. Click **Next** to continue with the installation.

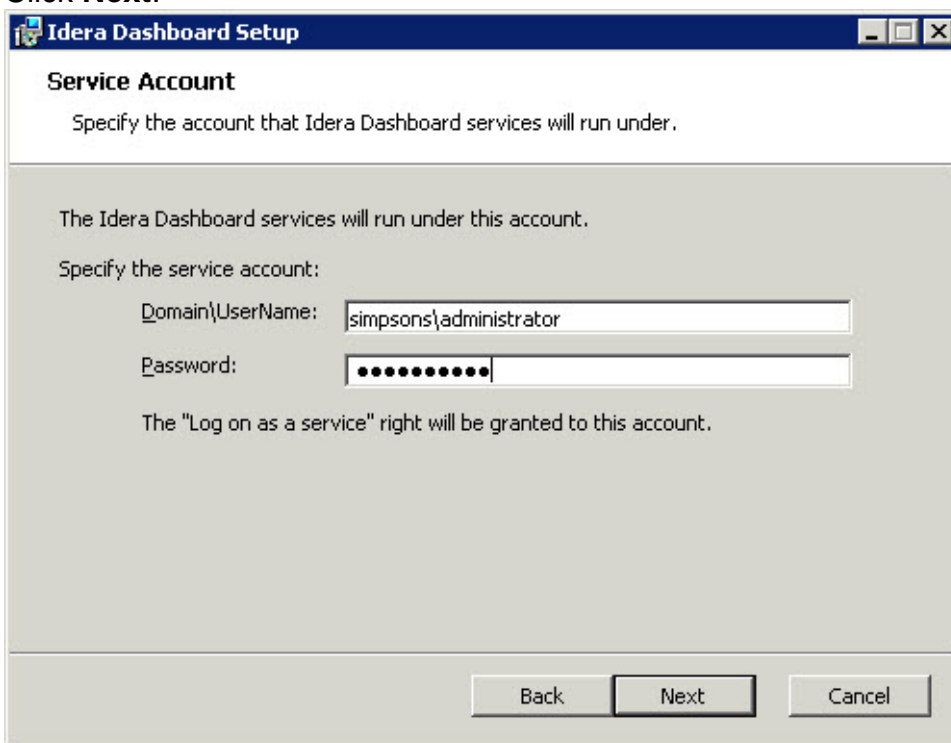
**Select a Windows user account to use for the service account**

The IDERA Dashboard uses this account to connect, discover, and gather configuration information from SQL Servers in your Business environment. The installer grants the "Log on as a Service" right to the account that you specify.

To specify a service account:

1. On the Service Account window, type appropriate credentials in the provided fields under which the services run.

2. Click **Next**.



The Idera Dashboard Setup dialog box, titled "Idera Dashboard Setup", shows the "Service Account" tab. It instructs the user to specify the account for the services. The "Domain\UserName" field contains "simpsons\administrator" and the "Password" field is masked with dots. A note states that the "Log on as a service" right will be granted. At the bottom are "Back", "Next", and "Cancel" buttons.

Idera Dashboard Setup

Service Account

Specify the account that Idera Dashboard services will run under.

The Idera Dashboard services will run under this account.

Specify the service account:

Domain\UserName: simpsons\administrator

Password:

The "Log on as a service" right will be granted to this account.

Back Next Cancel

Select service ports to use for the IDERA Dashboard

The IDERA Dashboard uses ports **9290**, **9291**, **9292**, and **9294** for the web application and dashboard services respectively. However, you can specify different service ports.

To specify a service port:

1. On the Service Ports window, specify the ports you want the web application and dashboard services to use.

Idera Dashboard Setup

Service Ports and Access URLs
 Idera Dashboard offers encrypted and non-encrypted communications. Specify the ports to be used by IDERA Dashboard. If a firewall is enabled, make sure it allows TCP traffic through these ports.

Idera Dashboard Web Application Ports

| | |
|----------------------------------------|-----------------------------------|
| HTTPS Port (Encrypted Transmission) | <input type="text" value="9291"/> |
| HTTP Port (Non-Encrypted Transmission) | <input type="text" value="9290"/> |

Idera Dashboard Service Ports

| | |
|------------------------------|-----------------------------------|
| Core Service Port | <input type="text" value="9292"/> |
| Web Application Service Port | <input type="text" value="9094"/> |

Back Next Cancel

2. Verify that the Firewall allows TCP (Transmission Control Protocol) traffic through your specified ports.
3. Click **Next**.

Select a SQL Server instance to use for the IDERA Dashboard Repository database

The IDERA Dashboard Repository database is where the collected data, alert information, and alert configuration settings are stored.

To specify the SQL Server instance to install the Repository database on:

1. On the Repository Database screen, specify the host SQL Server instance you want to use for the IDERA Dashboard Repository database.

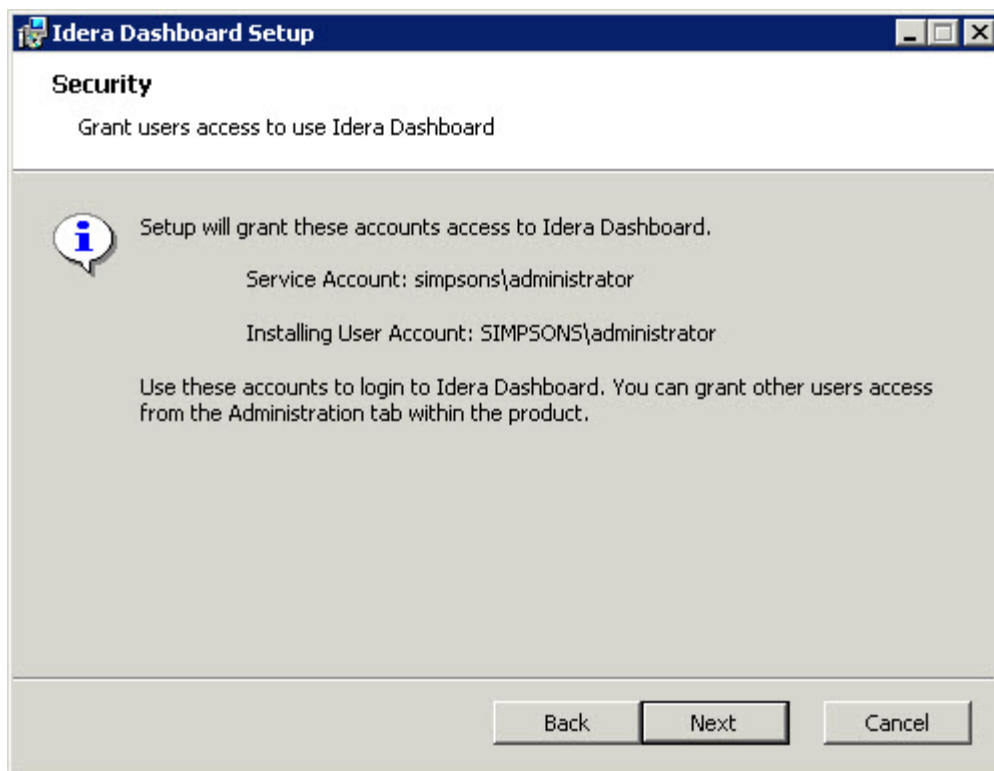
2. Type the name for the IDERA Dashboard Repository database.

The screenshot shows the 'Idera Dashboard Setup' window with the 'Repository Database' tab selected. The window has a title bar with the IDERA logo and standard window controls. The main content area is divided into sections. The first section, 'Repository Database', contains the instruction 'Specify the name and location of the Idera Dashboard repository database.' The second section contains the instruction 'Specify the host SQL Server and the name of the Repository database.' Below this, there are two text input fields: 'SQL Server Instance:' with the value '(local)' and 'Database Name:' with the value 'IderaDashboardRepository'. The third section, 'Connection Credentials:', contains the instruction 'By default, the setup program uses the credentials of your Windows logon account to create the Repository database.' Below this is a checkbox labeled 'Use Microsoft SQL Server Authentication' which is currently unchecked, and a 'Change...' button. At the bottom of the window are three buttons: 'Back', 'Next', and 'Cancel'.

3. **If your SQL Server environment uses SQL Server Authentication**, select the check box and click **Change** to enter SQL Server credentials. By default, the IDERA Dashboard uses your Windows credentials when connecting to the Repository database.
4. **If you use Microsoft SQL Server Authentication**, a new window displays where you can type the respective SQL Server login and password.
5. Click **Next**.

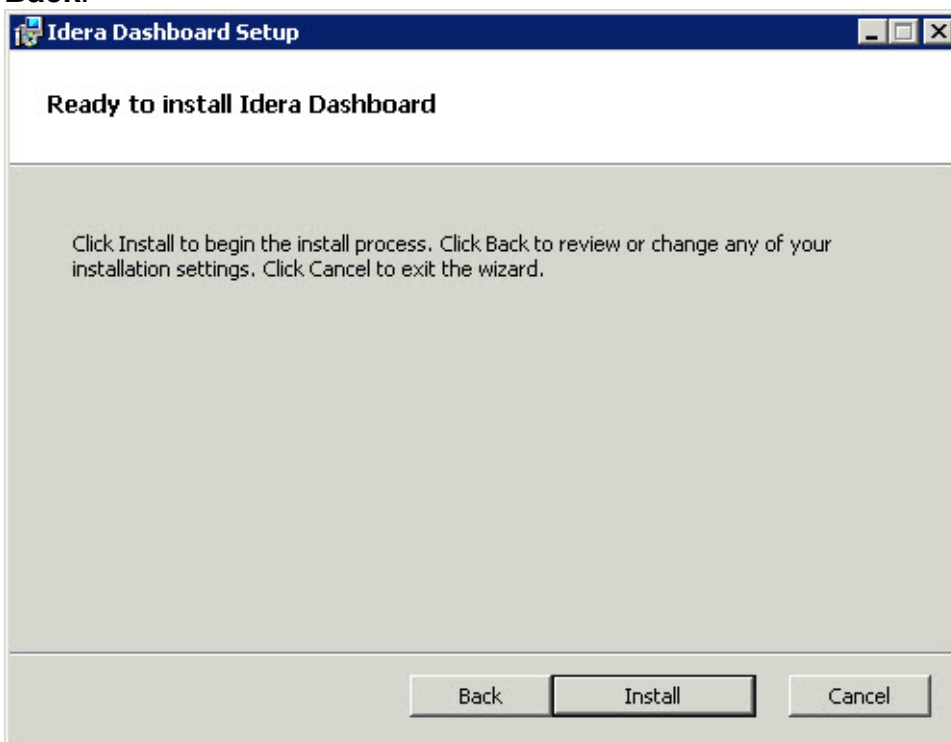
Grant access to the IDERA Dashboard

The user that installs the IDERA Dashboard has access to this application by default as a *Dashboard Administrator*. You can choose whether you want other users to have access to the IDERA Dashboard in the Administration view. To continue with the installation, click **Next**.

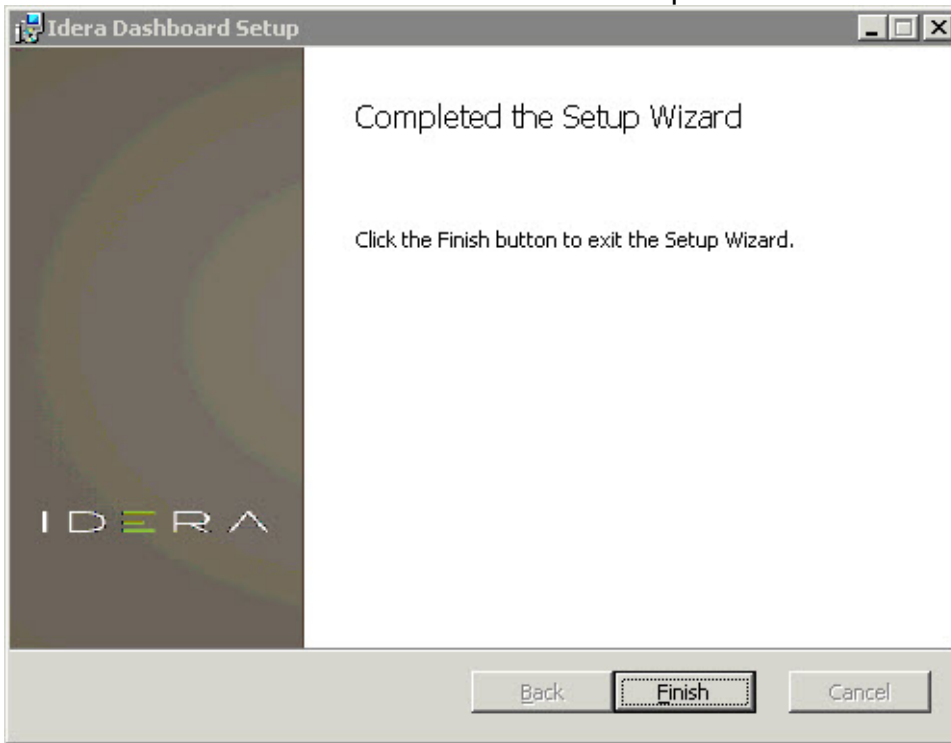


Complete the installation

1. Click **Install** to indicate that you are ready to complete your installation with the configurations you specified. ***If you want to review or change any of your settings***, click **Back**.



2. Click **Finish** to exit the IDERA Dashboard Setup Wizard.



The IDERA Dashboard installation is complete.

IDERA Dashboard provides an integrated user experience for the IDERA products in your environment.

| | | | | | | | |
|-------------------------------|--------------------------|--------------------------|-------------------------|---------------------------|--------------------------|---------------------------|-----------------------|
| IDERA Website | Products | Purchase | Support | Community | About Us | Resources | Legal |
|-------------------------------|--------------------------|--------------------------|-------------------------|---------------------------|--------------------------|---------------------------|-----------------------|