

Installing using a remote Dashboard

This section guides you through the installation of IDERA SQL Inventory Manager using a remote Dashboard. You can install IDERA SQL Inventory Manager on any computer that meets or exceeds the [product requirements](#).

Before you install IDERA SQL Inventory Manager, be sure to have:

- The path to a remote IDERA Dashboard installation. IDERA SQL Inventory Manager integrates with the IDERA Dashboard.
- A local administrator account on the machine you are installing the product.
- A host machine for SQL Inventory Manager services.
- A host SQL Server for the product databases.
- A service account with permissions to read/write and create databases and update their schemas.



A remote installation only registers IDERA SQL Inventory Manager with a remote IDERA Dashboard, IDERA SQL Inventory Manager is installed in the local computer.



You can also grant IDERA SQL Inventory Manager Product Administrator permissions in the IDERA Dashboard. For more information, see [Managing users in the IDERA Dashboard](#).

Installing IDERA SQL Inventory Manager with a remote IDERA Dashboard

Before you install IDERA SQL Inventory Manager, be sure to meet the requirements mentioned before. Open the installer and follow these steps:

1. Open the IDERA SQL Inventory Manager setup, click **Proceed**.
2. Read the License Agreement. If you agree select **I accept the Terms and Conditions** and click **Next** to continue.
3. Select **Remote** and provide a Dashboard URL using the format **http://<location of IDERA Dashboard>:9292**. PORT 9292 is the port for REST services.
4. Enter the administrator credentials for accessing the remote IDERA Dashboard installation.
5. Click **Next**.

IDERA SQL Inventory Manager Setup

SQL Inventory Manager Setup

To get started, we will need to install IDERA Dashboard. Please tell us the location where you like to install or upgrade the IDERA Dashboard.

☐ Local - Install or upgrade IDERA Dashboard locally

☒ Remote - Use remote IDERA Dashboard installation

Note: If you have previously installed other SQL products (SQL Diagnostic Manager, SQL Safe...), you may already have IDERA Dashboard installed. By pointing to the same IDERA Dashboard, it will combine all IDERA products under a centralized web console.

Please provide Idera Dashboard URL ,Admin info for existing installation:

URL should be in the format of http://location of IDERA Dashboard:9292. Port 9292 is the port for REST services

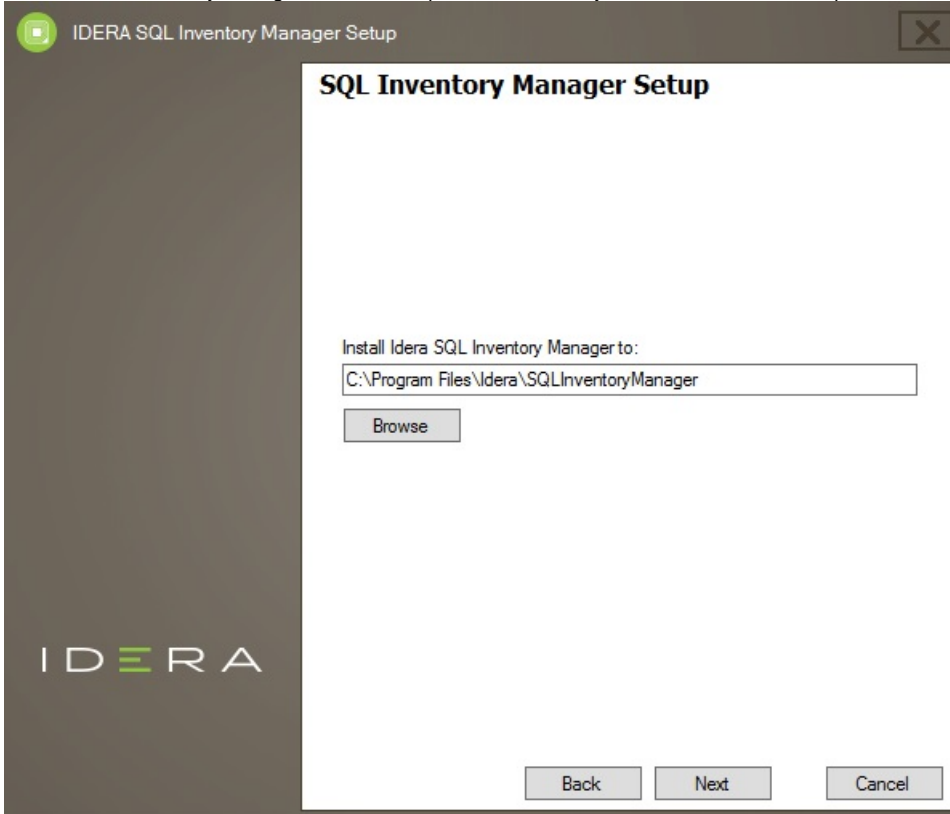
Enter Dashboard URL:

Enter Dashboard Administrator Credentials

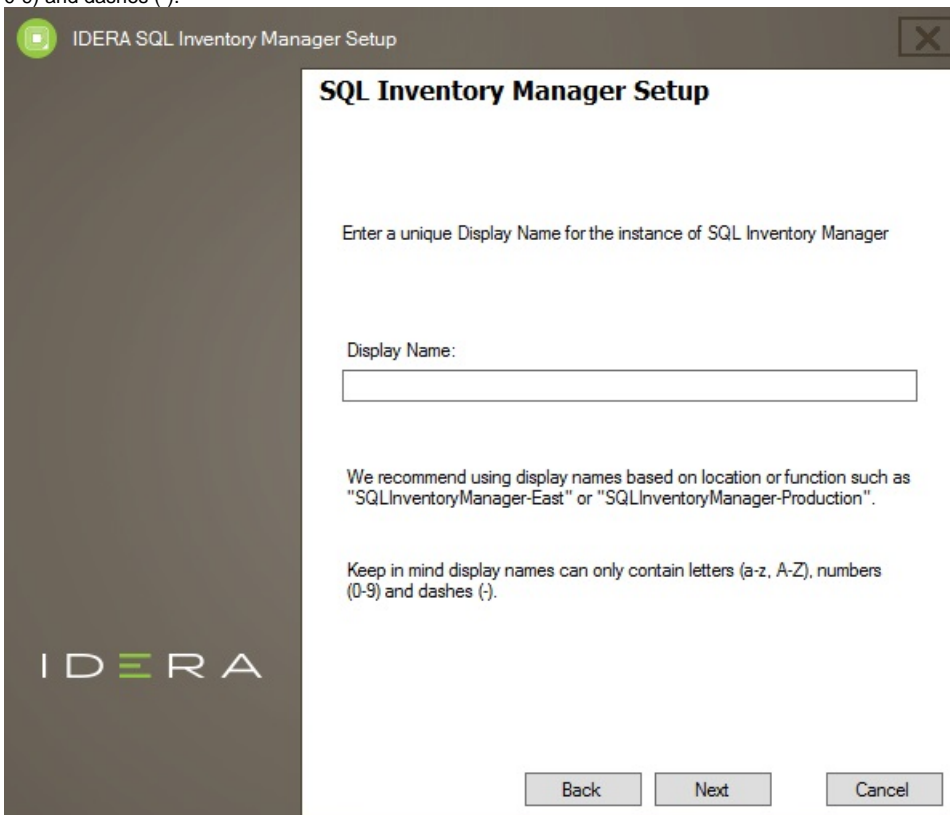
Domain\UserName:

Password:

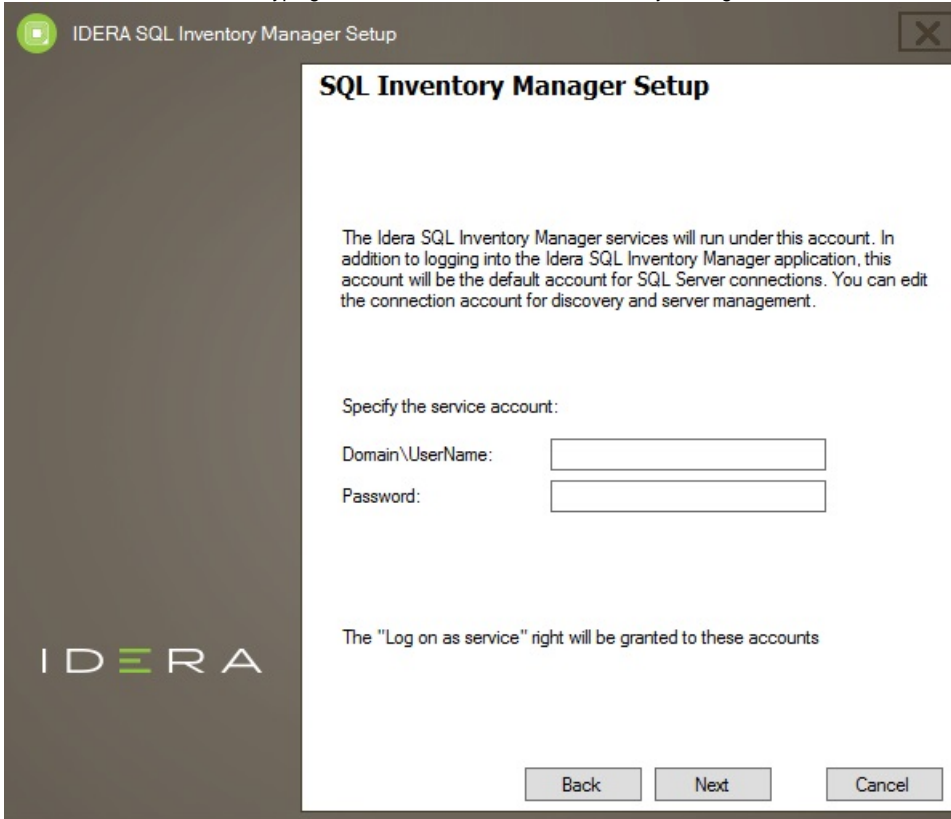
6. To install SQL Inventory Manager to the default path, click **Next**. If you want to use a different path, click **Browse**.



7. Type a unique name for this instance of IDERA SQL Inventory Manager and click **Next**. This page allows you to identify each instance of IDERA SQL Inventory Manager or other IDERA products when you have more than one installation of the same product. IDERA recommends that you use a name based on a location or function, such as **SIM-Prod** or **SIM-West**. Note that this field accepts only alphanumeric characters (A-Z, a-z, 0-9) and dashes (-).



8. Specify the **User Name** and **Password** under which the IDERA SQL Inventory Manager services will run and click **Next**. Use the format *<Domain Name>\<User Name>* when typing the User Name. IDERA SQL Inventory Manager uses this account for SQL Server connections.



IDERA SQL Inventory Manager Setup

SQL Inventory Manager Setup

The Idera SQL Inventory Manager services will run under this account. In addition to logging into the Idera SQL Inventory Manager application, this account will be the default account for SQL Server connections. You can edit the connection account for discovery and server management.

Specify the service account:

Domain\UserName:

Password:

The "Log on as service" right will be granted to these accounts

Back Next Cancel

IDERA

9. Specify which port you want to use for the Inventory Manager Collection Service. You must verify that the Firewall allows TCP (Transmission Control Protocol) traffic through your specified ports. By default, IDERA SQL Inventory Manager uses port 9275 for the Collection service. Click **Next** to continue.



Port values should be between 1 and 65535.

Keep in mind, that browsers may block some specific ports. To check a list of all blocked ports on Mozilla Firefox, see [Mozilla Port Blocking](#).

IDERA SQL Inventory Manager Setup

SQL Inventory Manager Setup

Specify the port to be used by SQL Inventory Manager services

Collection Service Port:

If Firewall is enabled make sure it allows TCP traffic through this port.

Back Next Cancel

IDERA

10. Specify a SQL Server Instance host and a database name for creating the SQL Inventory Manager Repository database. By default, the setup program uses your Windows logon account to create and access the Repository database. If you want to use Microsoft SQL Server connection credentials, select **Use Microsoft SQL Server Authentication** and enter your SQL Server credentials. Click **Next** to continue.

IDERA SQL Inventory Manager Setup

SQL Inventory Manager Setup

SQL Inventory Manager Repository

SQL Server Instance:

Database Name:

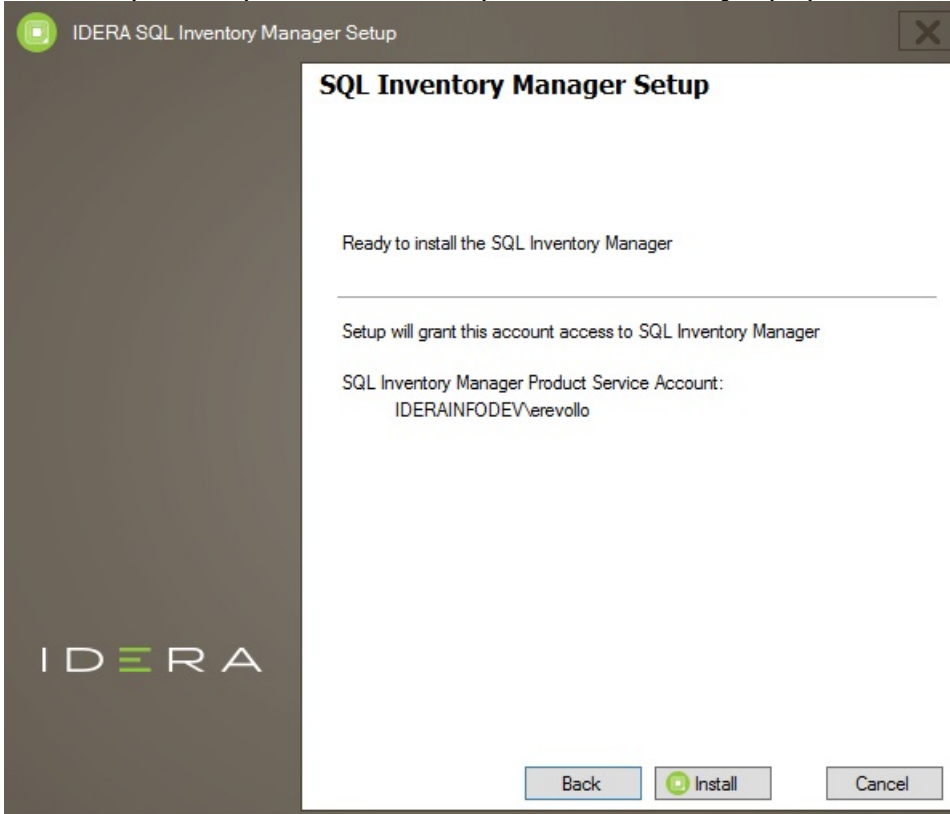
By default, setup program uses credentials of your Windows logon account to create the Repository database.

☐ Use Microsoft SQL Server Authentication

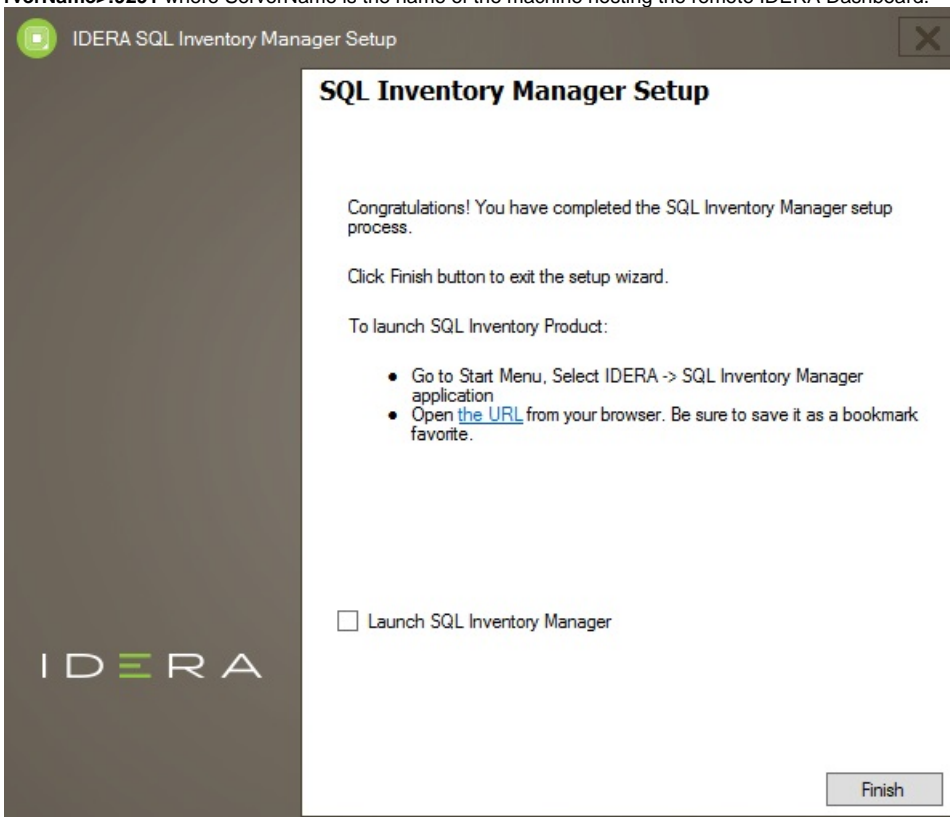
Back Next Cancel

IDERA

11. Click **Install** if you are ready to start the installation. If you want to review or change any of your installation settings, click **Back**.



12. After the installation is complete, you can select **Launch IDERA SQL Inventory Manager** to launch SQL Inventory Manager immediately after the installation window closes. Alternatively, you can access IDERA SQL Inventory Manager web application through the following link: **http://<ServerName>:9291** where ServerName is the name of the machine hosting the remote IDERA Dashboard.



When IDERA SQL Inventory Manager launches on your browser, you should use your Windows user account with your respective password to log in to the product. Please take into account that IDERA SQL Inventory Manager does not store passwords

IDERA [SQL Inventory Manager](#) lets you discover and visualize your SQL Server environment. [Learn more](#) > >

IDERA Website	Products	Purchase	Support	Community	About Us	Resources	Legal
-------------------------------	--------------------------	--------------------------	-------------------------	---------------------------	--------------------------	---------------------------	-----------------------