


How to install IDERA SQL Secure

This procedure guides you through a typical install of IDERA SQL Secure. A typical install sets up all SQL Secure components on the same computer. Use this procedure for first-time installs and evaluation installs.

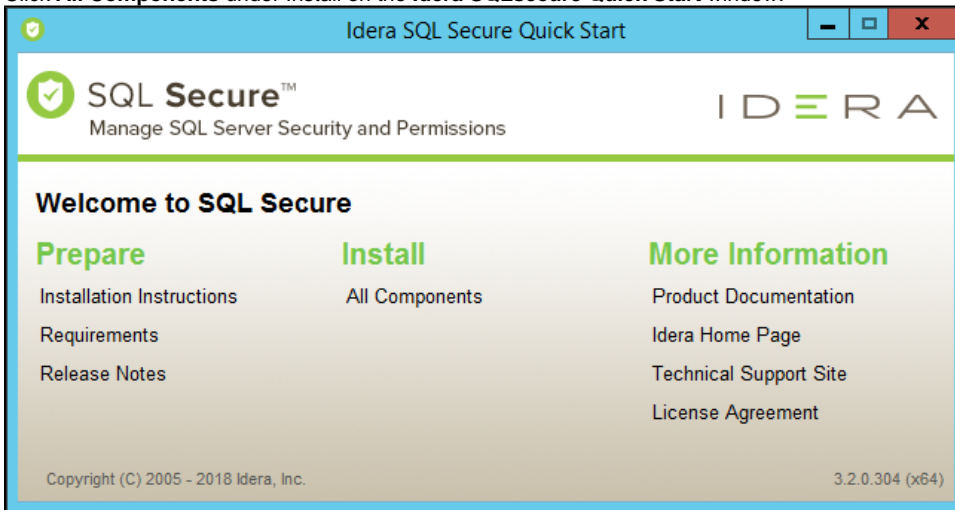
 Before you begin the installation process, ensure you have all permissions to create databases on SQL Server and review the [product requirements](#).

Start the setup program

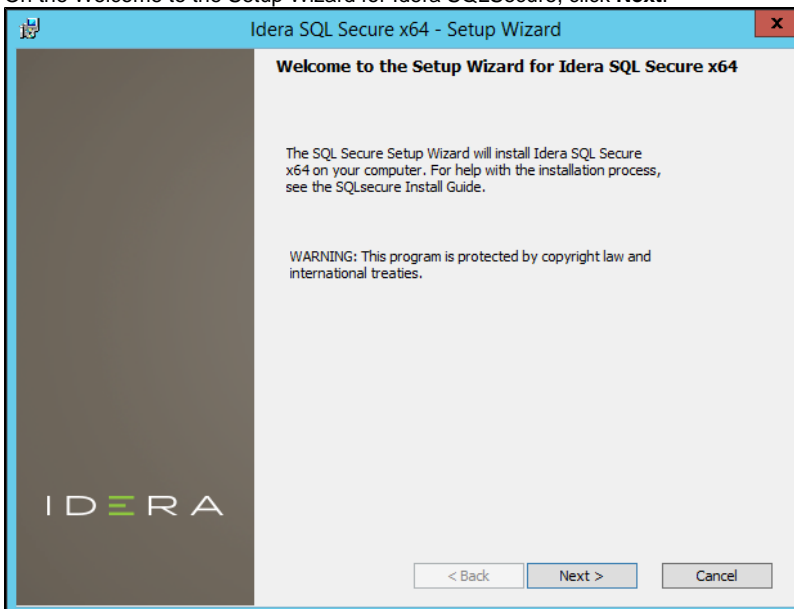
You can install SQL Secure on any computer that meets or exceeds the product requirements.

To start installing SQL Secure:

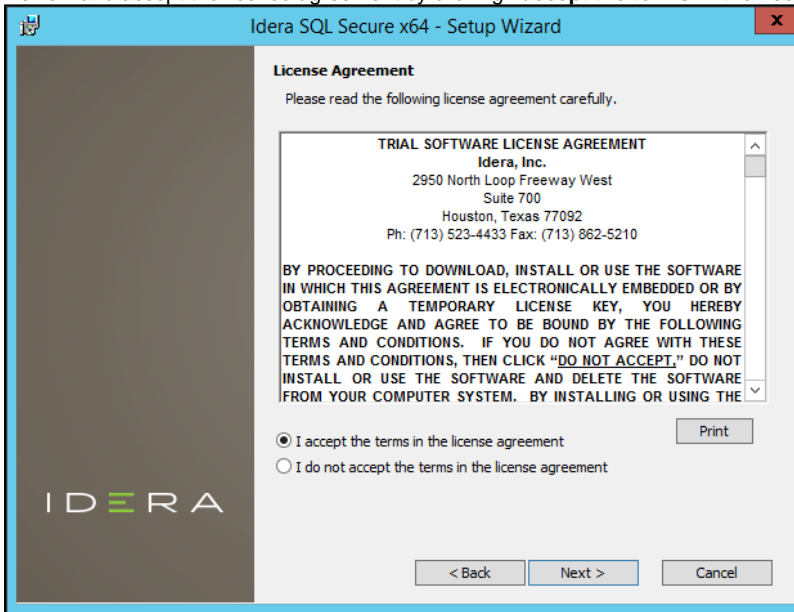
1. Log on with an administrator account to the computer on which you want to install SQL Secure.
2. Close all open applications.
3. Run `Setup.exe` in the root of the installation kit.
4. Click **All Components** under Install on the **Idera SQLSecure Quick Start** window.



5. On the Welcome to the Setup Wizard for Idera SQLSecure, click **Next**.

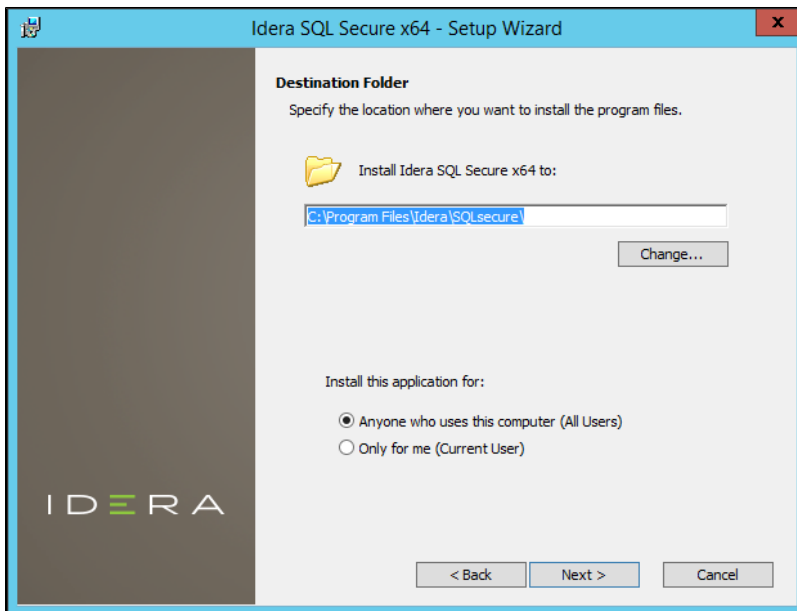


6. Review and accept the license agreement by clicking **I accept the terms in the license agreement**, and then click **Next**.



Choose where you want to install SQL Secure and who should use the product on this computer

You can use the default install location or specify a different location. For your first install, we recommend using the default location.



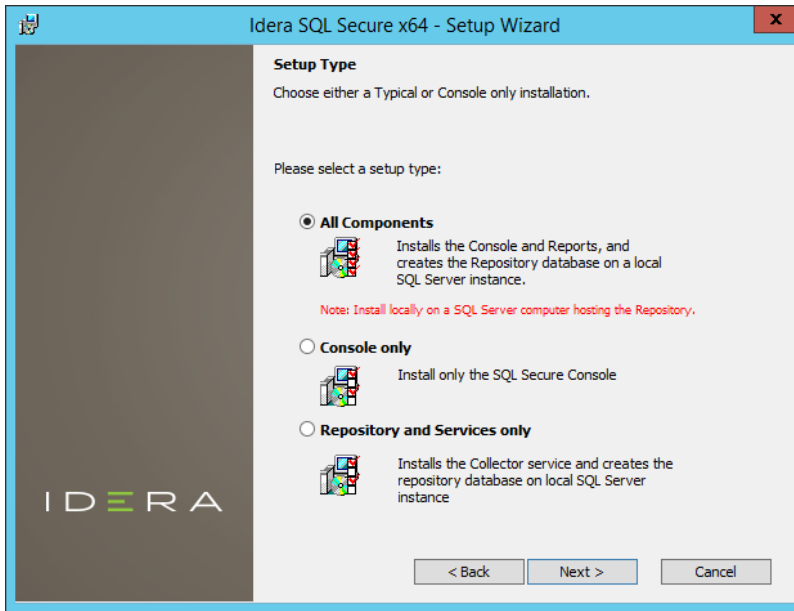
To choose a different location:

- Click **Change** to navigate to the location you want to use, and then click **Next**.

To restrict access:

- Choose whether you want any user (Anyone who uses this computer) or only the current user (Only for me) to access this application,
- Click **Next**.

Choose the type of install you want to perform



All Components

For your first install, we recommend that you select to install **All Components**. This option ensures that you install and configure all required SQL Secure components locally on the SQL Server computer hosting the Repository, so you can immediately begin using SQL Secure in your environment.

To perform a typical install, click **All Components**, and then click **Next**.

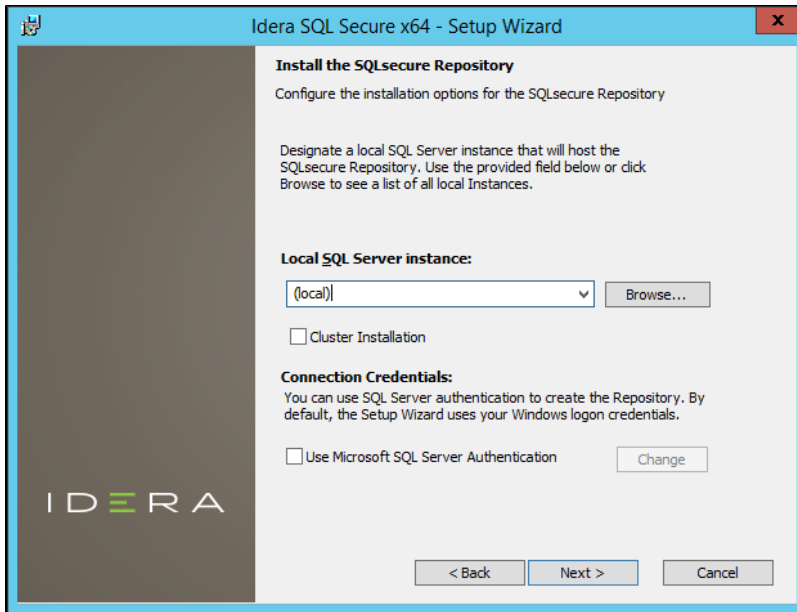
Console only or Repository and Services only

Alternatively, you can choose to install the **Console only** or the **Repository and Services only**. These options allow you to customize installation on each computer.

To install only the SQL Secure Console or the Repository and Services, select the appropriate option, and then click **Next**.

Choose which SQL Server instance you want to host the Repository database

Select the local SQL Server instance where the SQL Secure repository will be installed.



To choose the instance where the repository will be installed:

1. Click **Browse** to access a new window where a list of all available instances, in your current domain and other trusted domains will be displayed. Select the SQL Server instance you want to use.
2. Click **OK**.



If you do not see your SQL Server instance in the list, enter the host name and instance in the space provided.

To install on a cluster:

If you are installing on a Failover Cluster, check the **Cluster Installation** checkbox.

To specify the Connection Credentials:

By default, SQL Secure will connect to the selected SQL Server instance using the credentials of your current Windows logon account. For your first install, we recommend using your current logon account credentials.

To use a SQL Server login:

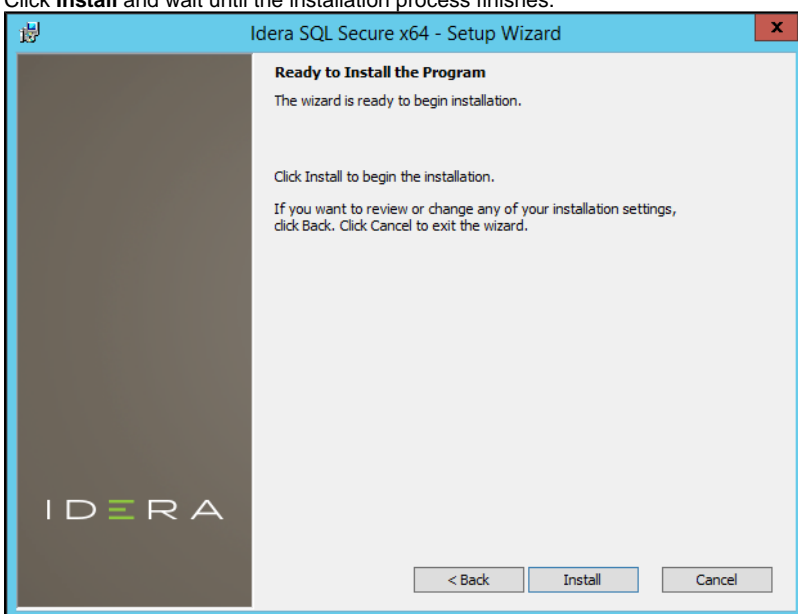
1. Click **Use Microsoft SQL Server authentication**. A new window for specifying the login credentials opens.
2. Specify the credentials of the login with sysadmin privileges on that instance, and then click **OK**.
3. Click **Next**.

Complete the install

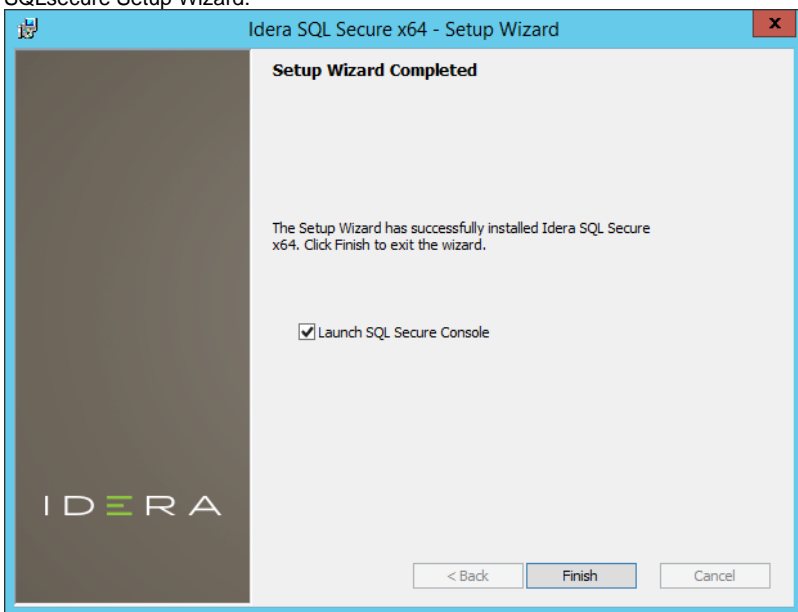
Indicate that you are ready to complete your install and apply the configurations you specified. If you want to make changes or review your installation settings, click **Back**.

To complete your install:

1. Click **Install** and wait until the installation process finishes.



2. Check the **Launch SQL Secure Console** checkbox to run the application after the installation finishes. Click **Finish** to exit the IDERA SQLsecure Setup Wizard.



After the installation is complete, you can start the Management Console to immediately begin experiencing the benefits SQL Secure provides.

[IDERA Website](#) | [Products](#) | [Buy](#) | [Support](#) | [Community](#) | [About Us](#) | [Resources](#) | [Legal](#)