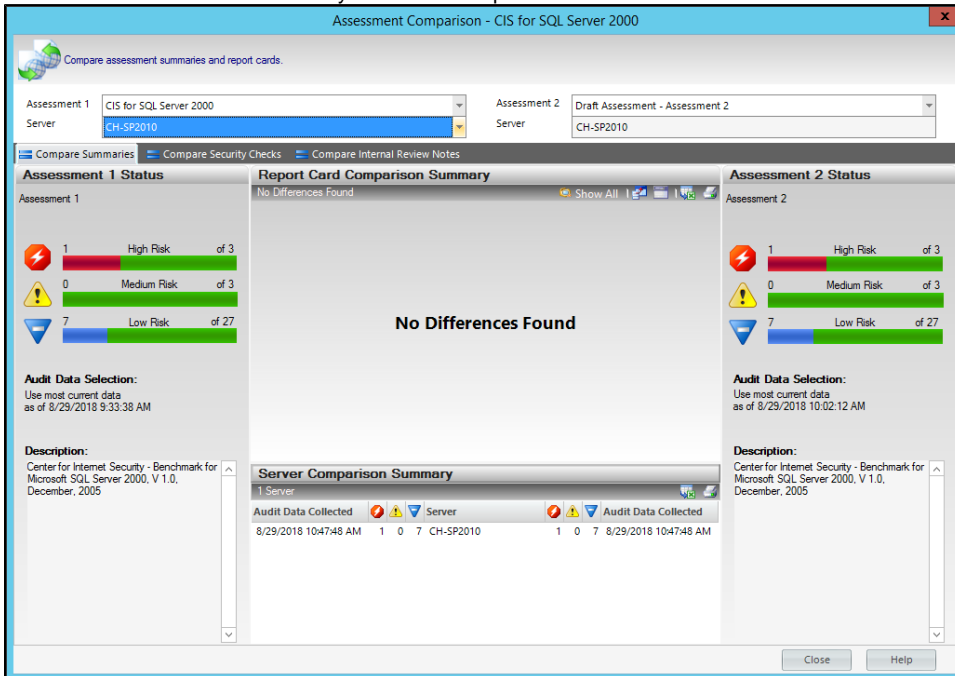


Compare assessments

Use the **Assessment Comparison** window to compare any two assessments saved from the same policy. You can compare assessments previously saved from the default **All Servers** policy or from any custom policy you created. For example, you may want to compare a draft assessment of this quarter's **All Servers** audit to an approved assessment of last quarter's **All Servers** audit.


To compare assessments:

- Select one of the assessments you want compare and click **Compare Assessments** in the ribbon options of the **Summary** tab of your selected assessment.
- The selected assessment is displayed in **Assessment 1**, click the drop-down options to select another assessment or the corresponding policy. Notice, it will only display the respective policy and its associated assessments. You can select from draft, published, or approved assessments.
- You can select to compare All Servers or a specific SQL Server instance from the list of available instances in the drop-down options.
- Select the **Assessment 2** to which you want to compare Assessment 1.



The **Compare Assessment** results will be displayed in the section below with the following three tabs:

- [Compare Summaries](#)
- [Compare Security checks](#)
- [Compare Internal Review Notes](#)

 For more information about how to use assessments in your existing audit process, see [Save Assessments](#).

[IDERA Website](#) | [Products](#) | [Buy](#) | [Support](#) | [Community](#) | [About Us](#) | [Resources](#) | [Legal](#)