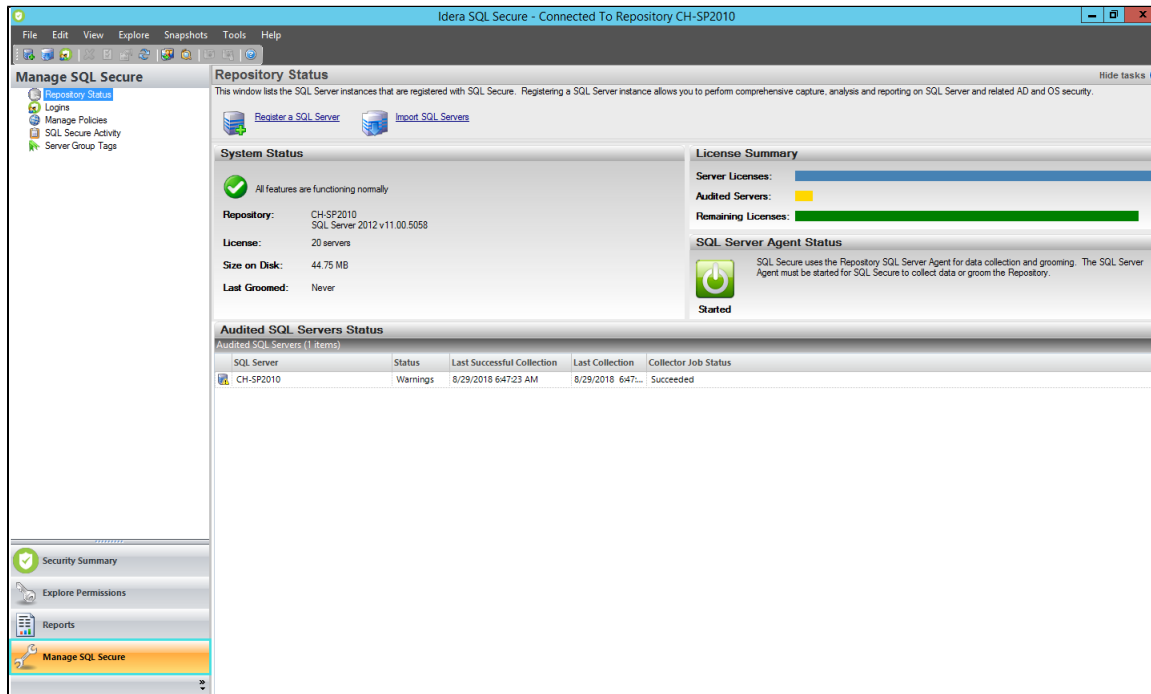


Manage SQL Secure

The **Manage SQL Secure** view lets you easily and quickly change your IDERA SQL Secure configuration and review SQL Secure activity. From the **Manage SQL Secure** view, you can access the following information:



Repository Status

Allows you to [view status of the SQL Server instances](#) that are registered with SQL Secure, SQL Secure licenses, and the SQL Server Agent used for collecting data.

Logins

Allows you to [view a list of logins](#) that are active in SQL Secure.

Policies

Allows you to [view and change properties of existing policies](#), view which assessments have been saved for each policy, or create a new policy.

SQL Secure Activity

Allows you to [see the logged events](#) associated with changes or actions that occur within SQL Secure.

Server Group Tags

Allows you to [view a list of tags](#) and servers that are available in IDERA SQL Secure.