
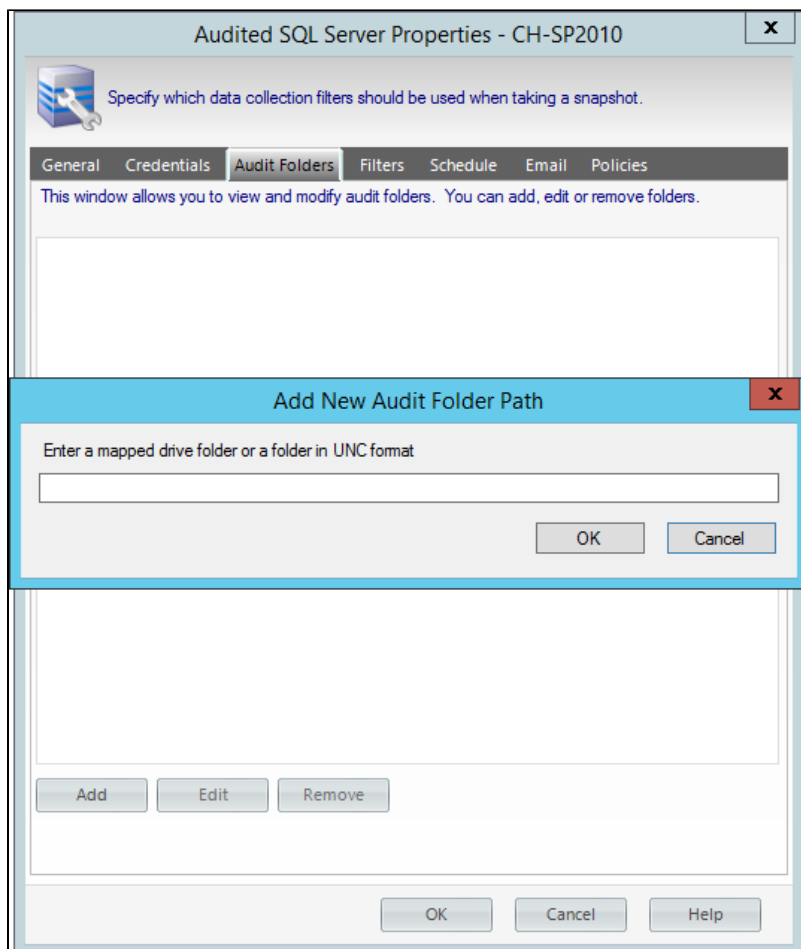


Define folders

 This tab is not available for Azure SQL databases.

In the **Specify Audit Folders** section you can specify which folders will be audited for collecting file system permission information.



Click **Add** and type a mapped drive folder or a folder in UNC format. You can add as many folders as you require.

If you want to change or delete any of the previously added folders, click **Edit** or **Remove** respectively.

[IDERA Website](#) | [Products](#) | [Buy](#) | [Support](#) | [Community](#) | [About Us](#) | [Resources](#) | [Legal](#)