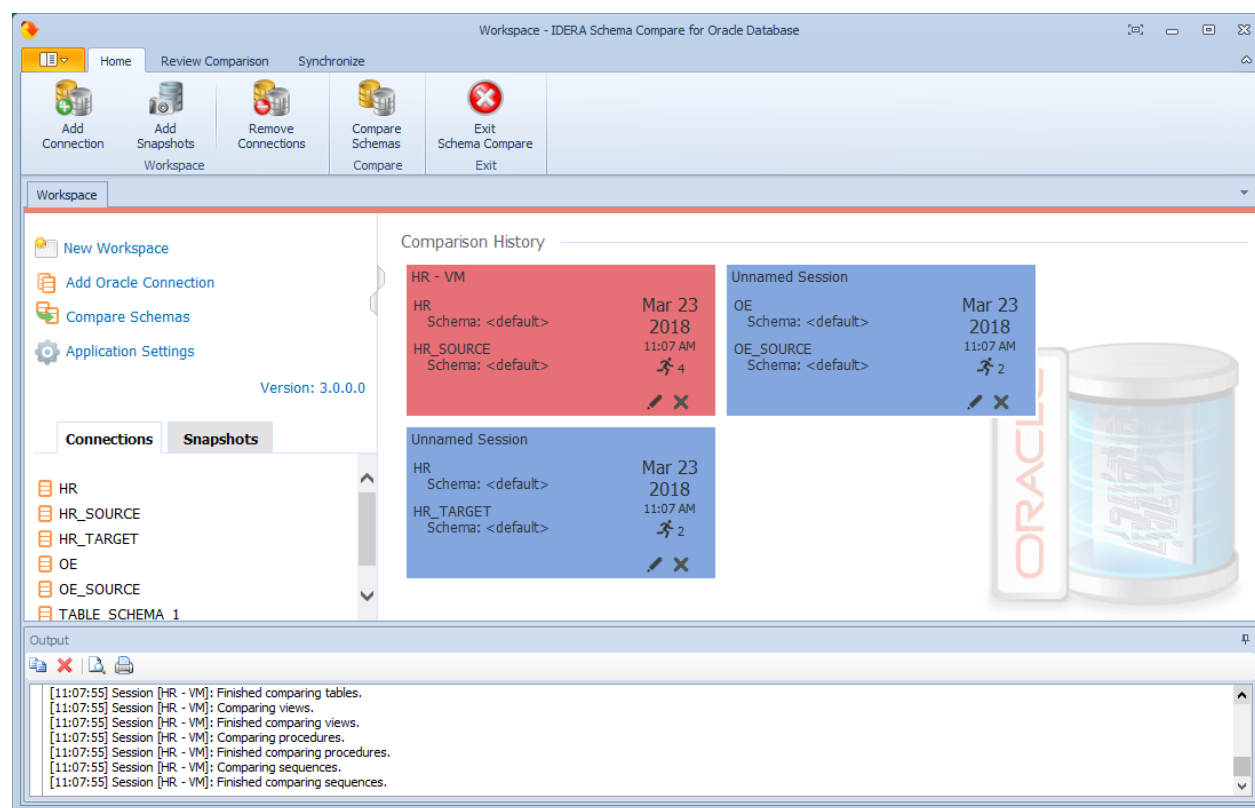


# Schema Compare Application window

IDERA Schema Compare for Oracle Database divides the main application window into three areas:

1. **The ribbon.** The context sensitive ribbon provides all the command buttons and icons you need to do your job quickly. The ribbon is organized in three distinct tabs each of which corresponding to the main steps of the database schema comparison and synchronization process and containing the relevant command buttons.
2. **Main panel.** The main panel contains a permanent tab called the [Workspace](#) which you cannot close, and a tab for each active comparison session.
3. **Output window.** The output window provides a running log of the tasks being performed in IDERA Schema Compare for Oracle Database.



Total compare from data to schema with IDERA [Comparison Toolset](#). [Learn more >>](#)

<a href="#">IDERA Website</a>	<a href="#">Products</a>	<a href="#">Purchase</a>	<a href="#">Support</a>	<a href="#">Community</a>	<a href="#">About Us</a>	<a href="#">Resources</a>	<a href="#">Legal</a>
-------------------------------	--------------------------	--------------------------	-------------------------	---------------------------	--------------------------	---------------------------	-----------------------