

SQL Data Compare Add Databases

Before comparing databases, you will need to add them to the workspace. The IDERA SQL Data Compare Add Databases functionality can be accessed from the ribbon (the Home tab) or from the **Add Databases** action link at the top left section of the Workspace tab.

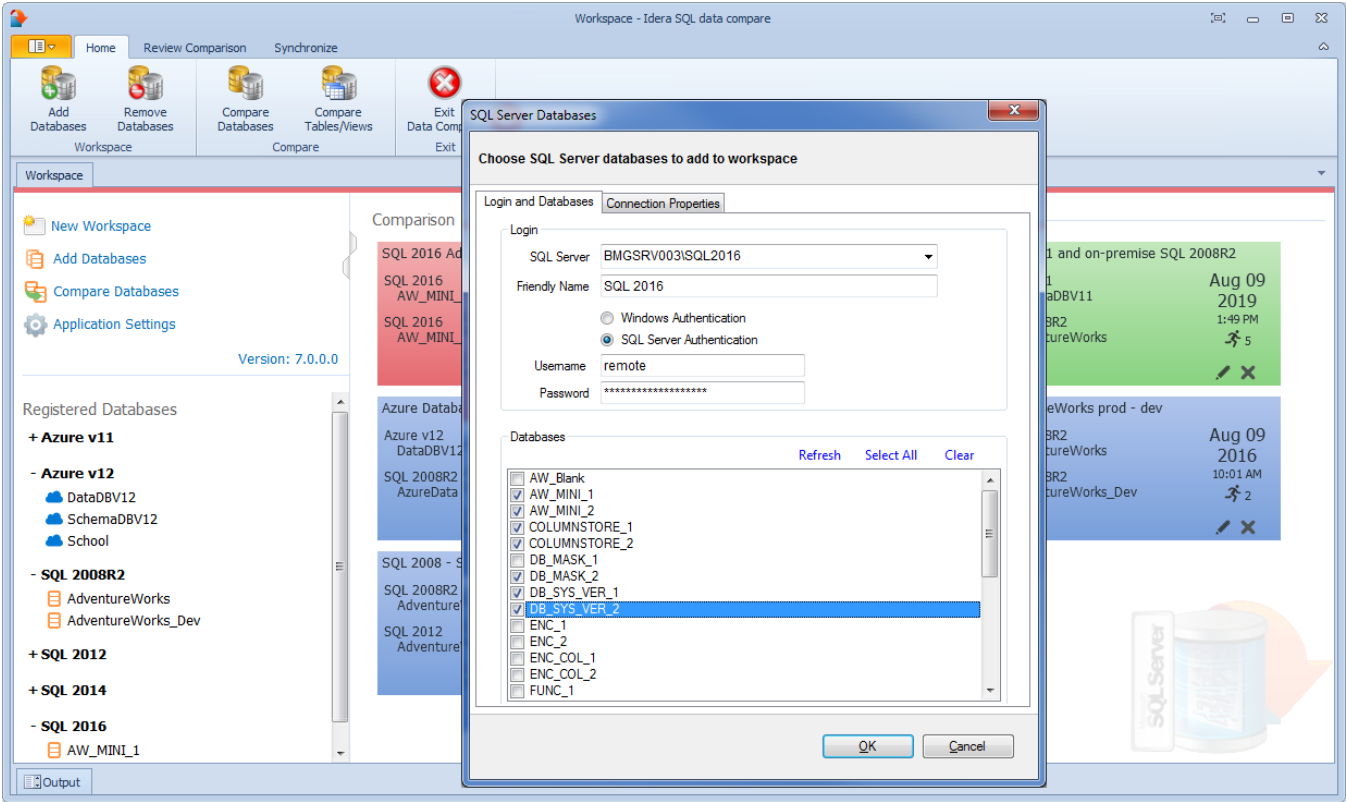
On the Add Database dialog window choose the server where the database(s) you want to add resides. You can click on the **Refresh** item of the SQL Server drop down to discover the SQL Server instances running on your network. If the application is not able to discover the SQL Server instance you are looking for either because it is not exposing itself, or it is not running on your local area network, or it is not listening on the default port then you can type in ServerName (or IP address)\Instance Name on the drop down box. If the SQL Server is not listening on the default port you can specify a custom port on the following format:

[ServerName or IP Address]\[Instance Name],PortNumber

Once you have chosen the server and the authentication method (including login name and password if you chose SQL Server Authentication) you can click on the **Refresh** link at the top of the Databases box and the application will connect to the server using the information you provided and populate the Databases box with the list of all user databases in that server. You can select one or more databases to add to the workspace.

By default IDERA SQL Data Compare will use the connection properties set at the Application Settings, however, you can change the connection properties for this server only if you need to.

In the other properties edit box, you can specify additional connection properties as name=value pairs separated by semicolons: name1=value1;name2=value2;...



Total compare from data to schema with IDERA [SQL Comparison Toolset](#). [Learn more](#) >>

IDERA Website	Products	Purchase	Support	Community	About Us	Resources	Legal
-------------------------------	--------------------------	--------------------------	-------------------------	---------------------------	--------------------------	---------------------------	-----------------------