

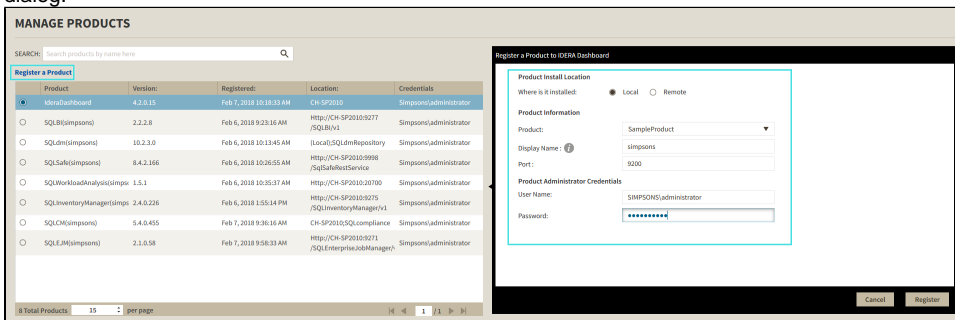
# Managing product registry in the IDERA Dashboard

The IDERA Dashboard hosts IDERA products that register with the Dashboard. To access product management in the IDERA Dashboard, either select **Manage Products** from the Administration menu or click **Manage Products** on the Administration view of the IDERA Dashboard. In the **Manage Products** window you can perform the following actions:

## Registering a product in the IDERA Dashboard

Follow the instructions below to manually register a product.

1. In the **Manage Products** view, click **Register a Product**. The IDERA Dashboard displays the **Register a Product to IDERA Dashboard** dialog.



2. Select the location of the product you want to register, **Local** or **Remote**.

### Local Installation:

1. Select the product you want to register from the available list or type in the name of the product.
2. Type a unique display name to help distinguish this instance from another instance if you have multiple installations of the same product. IDERA recommends a display name using the location or function, such as "DiagnosticManagerWest" or "DiagnosticManagerProd."
3. Type the name of the host instance where this product resides and the default port for the product. See the table below for information on the default ports for each product.

Idera Product	Product Name	Default Port	
SQL Business Intelligence	SQLBI	9277	
SQL Inventory Manager	SQLInventoryManager	9275	
SQL Diagnostic Manager	SQLdm	5170	
SQL Safe	SQLSafeRestService	9998	
Sample Product	SampleProduct	9200	
SQL Compliance Manager	SQLCM	5200, 5201	Can register manually as of version 5.4
SQL Workload Analysis	SQLWA	20700	Cannot register manually
SQL Enterprise Job Manager	SQLEJM	9271	Cannot register manually



## Note

When you manually register the product it will use port 9292.

4. In the **Product Administrator** section, type the user name and password for the administrator account using the *domain\username* format.
5. Click **Register**. A confirmation message appears warning you that the system logs out your session upon continuing.
6. Click **Yes**. Log in to begin using the newly-registered product.

### Remote Installation:

1. Enter the Host Name or IP Address of the server where your product is installed.
2. Provide the corresponding **Host User Name** and **Host Password**.

3. In the **Product Information** section, type the product information provided on the above table.
4. Under Product Administrator Credentials section enter the server credentials.
5. Click **Register**. A confirmation message appears warning you that the system logs out your session upon continuing.

## Editing a product in the IDERA Dashboard

Clicking the **Edit** icon for an IDERA product allows you to edit the associated instance name, install location, user name and password for the account used to connect to the product, and the short or common name of the product. To edit a product, follow these steps:

1. Click one product in the list to edit it. IDERA Dashboard displays the the Edit IDERA Registered Product window.

2. Make the necessary changes.
3. Click **SAVE**.



## Note

Only user roles with administrative privileges can edit the products.

## Removing a product from the IDERA Dashboard

Clicking the **Delete** icon for an IDERA product allows you to unregister that product. Use the following steps to delete a product.

1. Click one product in the list to delete it. IDERA Dashboard displays the Edit IDERA Registered Product window.

**Edit IDERA Registered Product**

**Product Information**

Product: SQLCM(sqlcmws12)

Display Name: *i* sqlcmws12

Version: 5.5.0.487

Registered: Feb 20, 2018 7:49:07 AM

Location:

**Product Administrator Credentials**

User Name:

Password:

Cancel Save **Delete** Migrate product

2. Click **Delete**. IDERA Dashboard displays a warning message that requires a confirmation whether you want to delete that selection.
3. Click **Yes**. IDERA Dashboard unregisters and deletes the product and users can no longer access that product. ***If you did not mean to delete the selected account, click No.***

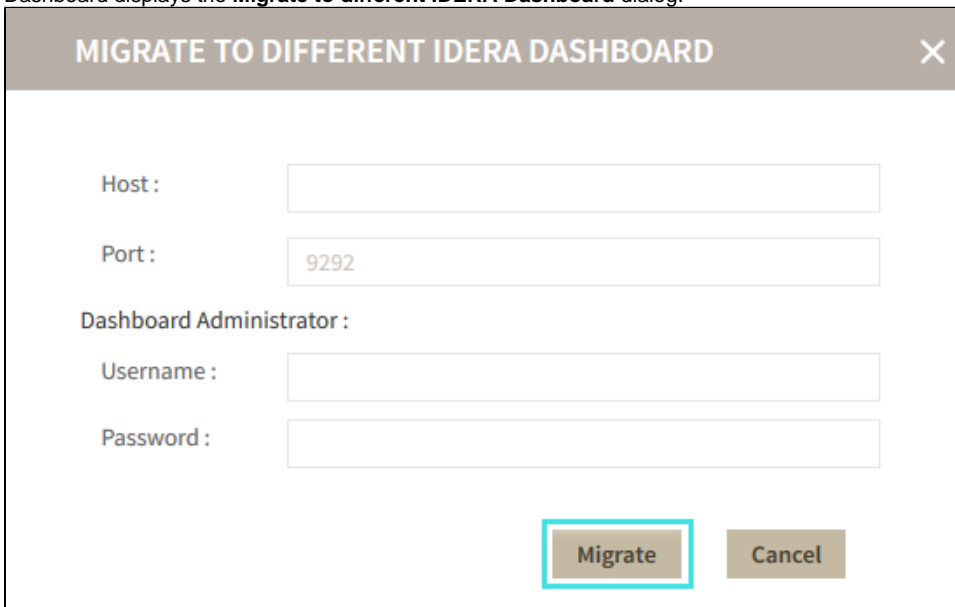
## Migrating a product to another IDERA Dashboard installation

Users who have multiple IDERA products also may have more than one version or installation of the IDERA Dashboard. To take advantage of all of the features of the latest version of the IDERA Dashboard, you can migrate your products from one version of the IDERA Dashboard to another. This process migrates data to the target installation of the IDERA Dashboard and un-registers the product from the previous IDERA Dashboard.

Use the following steps to migrate an IDERA product from one installation or version of the IDERA Dashboard to another.

1. In the **Manage Products** view, select the product you want to migrate from one installation of the IDERA Dashboard to another.

2. Verify that the **Edit Product** dialog displays the information for the correct product, and then click **Migrate product**. The IDERA Dashboard displays the **Migrate to different IDERA Dashboard** dialog.



**MIGRATE TO DIFFERENT IDERA DASHBOARD** X

Host :

Port :

Dashboard Administrator :

Username :

Password :

**Migrate** **Cancel**

3. Type the name of the host machine on which the target IDERA Dashboard is installed and the port number.
4. In the **Dashboard Administrator** section, type the user name and password for the target IDERA Dashboard administrator account using the *domain\username* format.
5. Click **Migrate**. The IDERA Dashboard migrates the product to the target IDERA Dashboard.