


Installing SQL Inventory Manager

This section guides you through the installation of IDERA SQL Inventory Manager. You can install IDERA SQL Inventory Manager on any computer that meets or exceeds the [product requirements](#).

Before you install IDERA SQL Inventory Manager, be sure to have:


- A local administrator account on the machine you are installing the product.
- A host machine for SQL Inventory Manager services.
- A host SQL Server for the product databases.
- A service account with permissions to read/write and create databases and update their schemas.
- .NET framework 4.6.1 or later version installed.

 To check the .NET Framework version you have installed in your computer, follow these steps:

- Open the Registry Editor
- Navigate to Computer\HKEY_LOCAL_MACHINE\SOFTWARE\Microsoft\NET Framework Setup\NDP\v4\Full
- Check the Value for key Release
- Compare the release value with the information on [How to determine which .NET versions are installed](#)



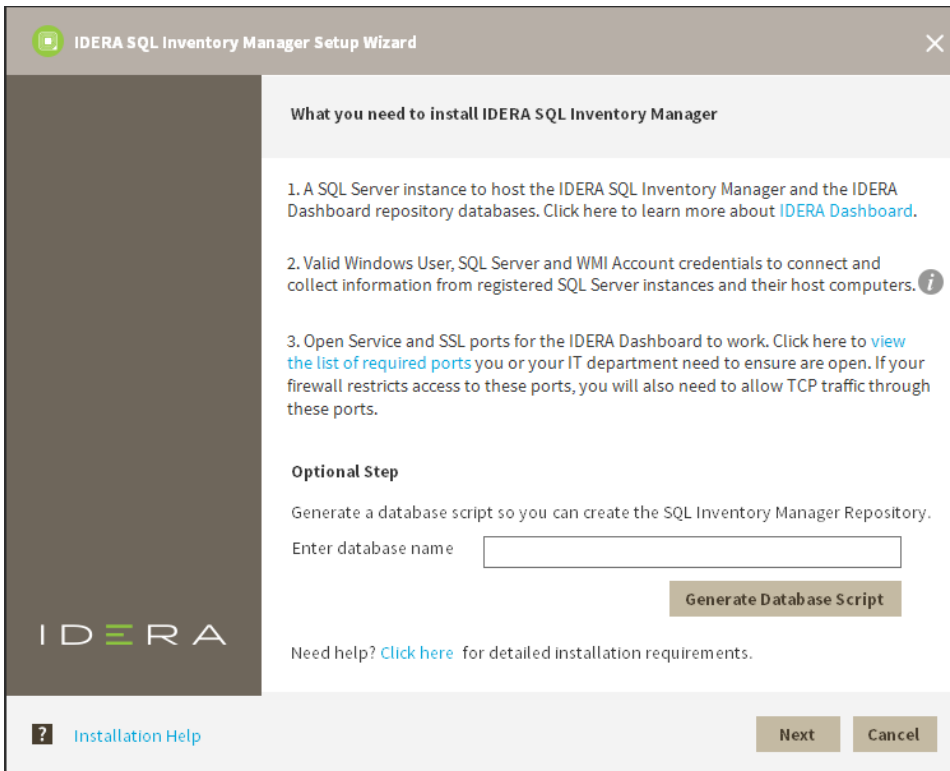
Please note that in order to install SQL Inventory Manager you must use one of the following operating systems: Windows Server 2008 SP2+, Windows 8, Windows 10, Windows 2012 or Windows 2016.

 You can also grant IDERA SQL Inventory Manager Product Administrator permissions in the IDERA Dashboard. For more information, see [Managing users in the IDERA Dashboard](#).

Installing IDERA SQL Inventory Manager

Before you install IDERA SQL Inventory Manager, be sure to meet the requirements mentioned before. Open the installer and follow these steps:

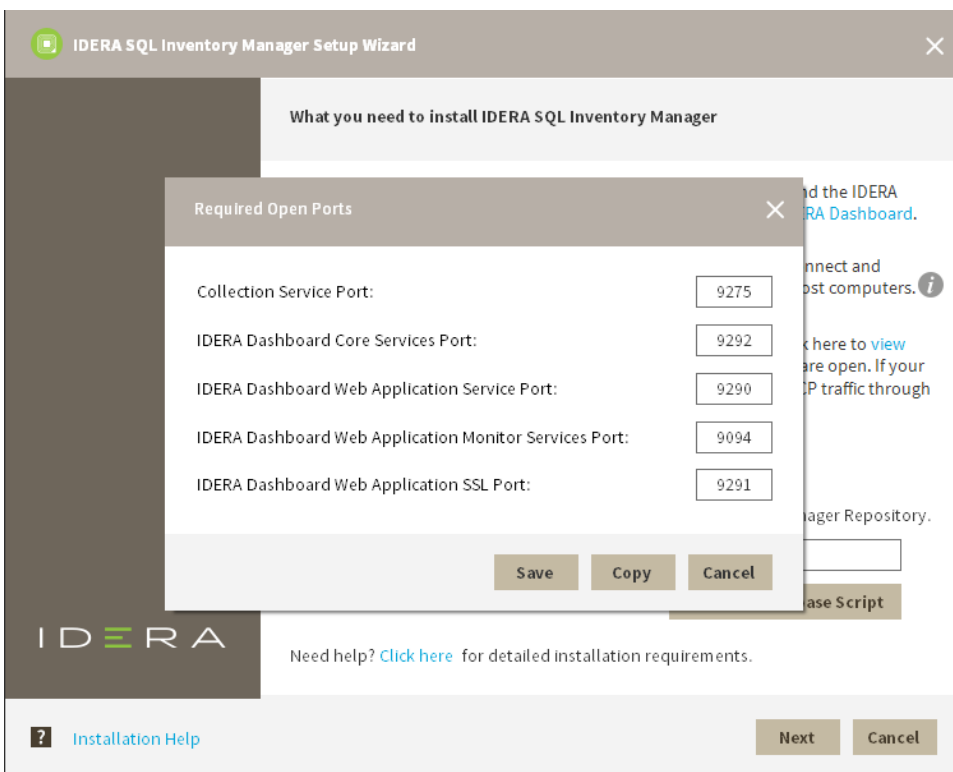
1. On the **IDERA SQL Inventory Manager Setup** window, click **Next** to continue with the installation. You can optionally generate a script for generating the SQL Inventory Manager Repository database.



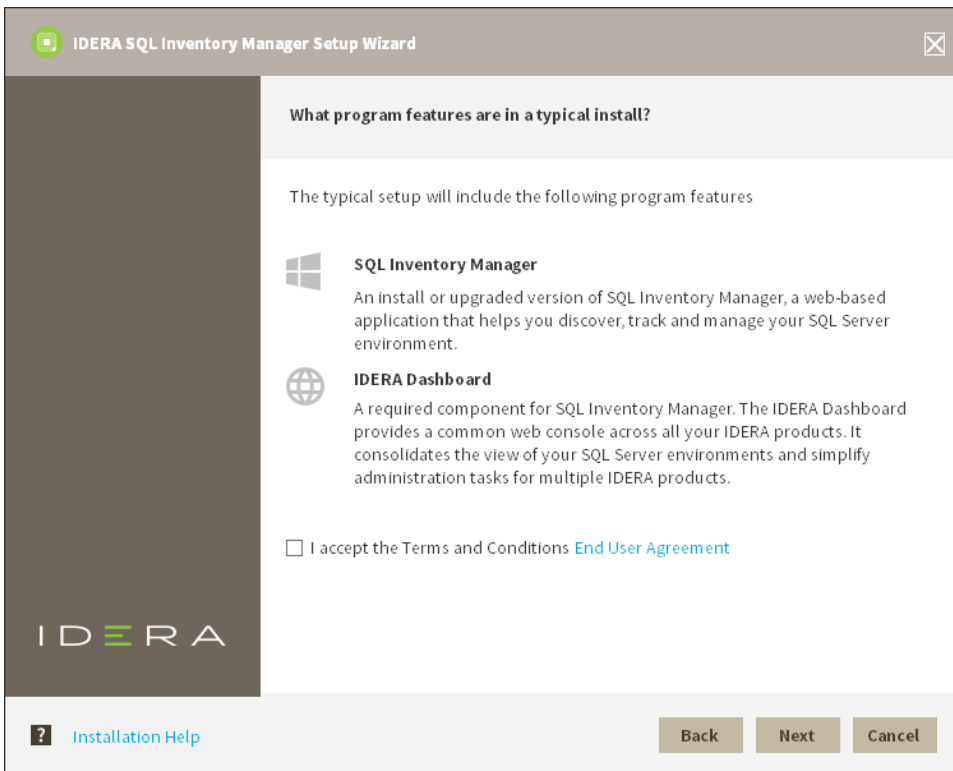
2. You must verify that the Firewall allows TCP (Transmission Control Protocol) traffic through **The ports you want to use**. By default, IDERA SQL Inventory Manager uses ports 9275 and 9291 for the Collection and Web Application services respectively. To see or edit the default ports SQL Inventory Manager uses click **view the list of required ports**.

i Port values should be between 1 and 65535.

Keep in mind, that browsers may block some specific ports. To check a list of all blocked ports on Mozilla Firefox, see [Mozilla Port Blocking](#).



3. Read the License Agreement. If you agree, click **I accept the Terms and Conditions** and then click **Next**.



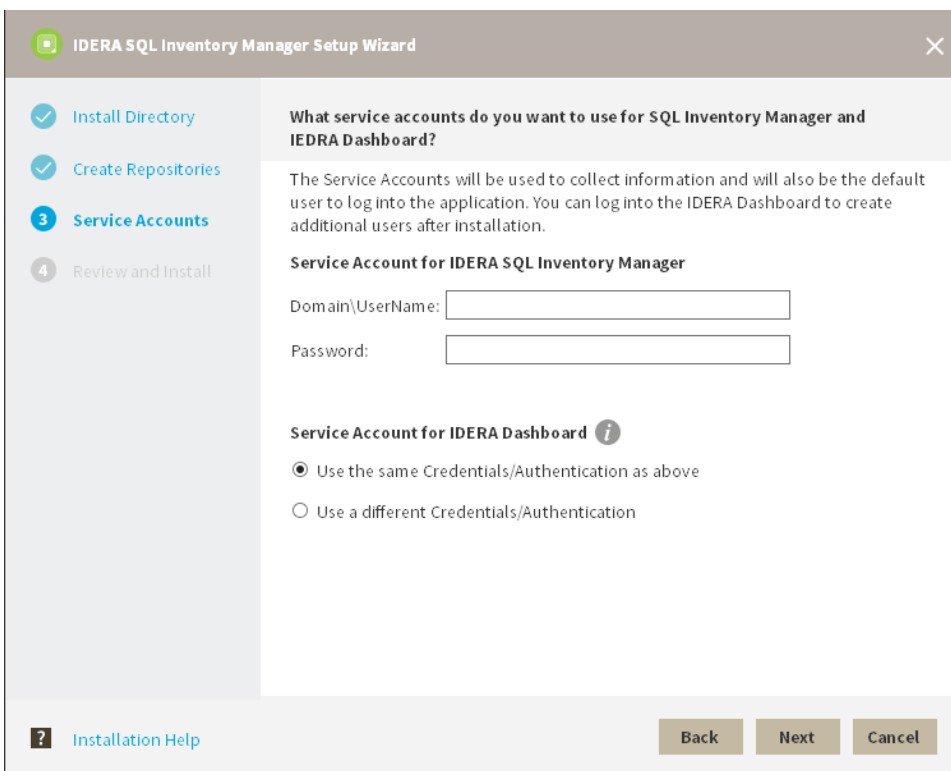
4. On this section you can specify a Display Name for your SQL Inventory Manager installation and the location of both SQL Inventory Manager and IDERA Dashboard.

- a. If you want to change SQL Inventory Manager default path, click **Browse**.
 - b. On the **Display Name** box, type a unique name for this instance of IDERA SQL Inventory Manager. A Display Name allows you to identify each instance of IDERA SQL Inventory Manager or other IDERA products when you have more than one installation of the same product. IDERA recommends that you use a name based on a location or function, such as **SIM-Prod** or **SIM-West**. Note that this field accepts only alphanumeric characters (A-Z, a-z, 0-9) and dashes (-).
 - c. Choose **Install or upgrade locally** to install IDERA Dashboard on the default installation path. If you want to change IDERA Dashboard default path, click **Browse**. If you want to register SQL Inventory Manager with an existing remote IDERA Dashboard installation, choose **Use remote IDERA Dashboard Installation** and follow [these steps](#).
5. Specify a SQL Server Instance host and database names for the creation of the SQL Inventory Manager Repository database and the IDERA Dashboard Repository database respectively.

By default, the setup program uses your Windows logon account to create and access the Repository databases. If you want to use Microsoft SQL Server connection credentials, select **Use Microsoft SQL Server Authentication** and enter your credentials on the Microsoft SQL Server credentials dialog.

6. Specify a **User Name** and a **Password** for the Service Account for IDERA SQL Inventory Manager. Use the format *<Domain Name>\<User Name>*. IDERA SQL Inventory Manager uses this account to connect, discover, and gather configuration information from SQL Servers. The installer grants the "Log on as a Service" right to the account that you specify. Click **Next** to continue.

If you want to use different credentials for the Service Account for IDERA Dashboard, choose **Use different Credentials/Authentication**, and type your credentials. IDERA Dashboard uses this account when accessing the IDERA Dashboard to share data.



IDERA SQL Inventory Manager Setup Wizard

☒ Install Directory
☒ Create Repositories
☒ **3 Service Accounts**
☐ 4 Review and Install

What service accounts do you want to use for SQL Inventory Manager and IDERA Dashboard?

The Service Accounts will be used to collect information and will also be the default user to log into the application. You can log into the IDERA Dashboard to create additional users after installation.

Service Account for IDERA SQL Inventory Manager

Domain\UserName:

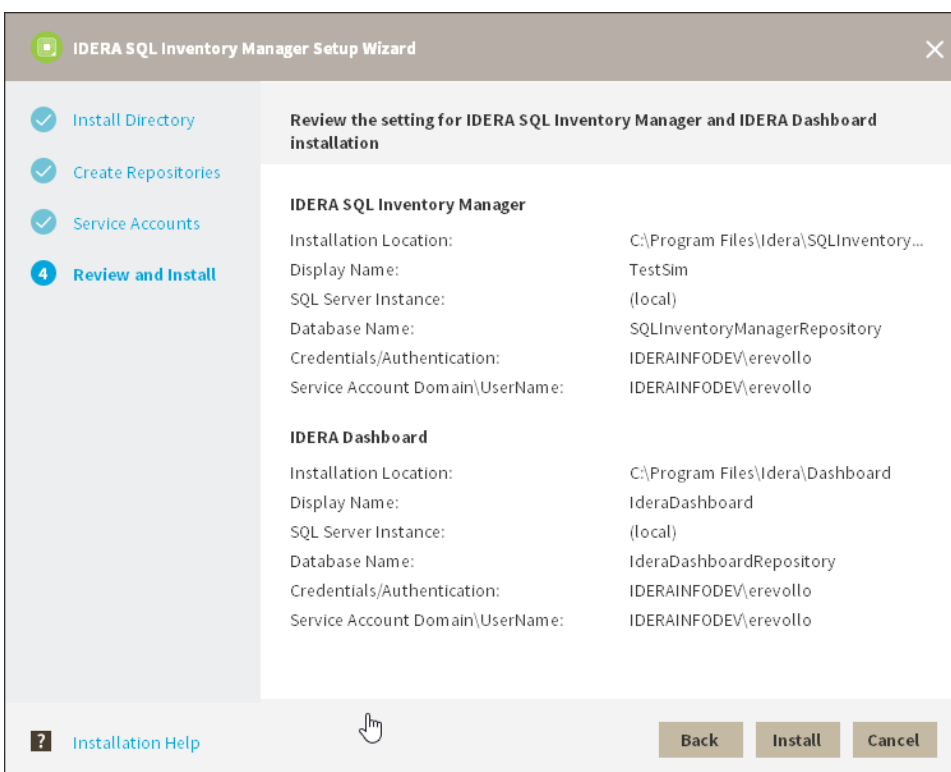
Password:

Service Account for IDERA Dashboard ⓘ

☒ Use the same Credentials/Authentication as above
☐ Use a different Credentials/Authentication

[? Installation Help](#)

7. Click **Install** if you are ready to start the installation. If you want to review or change any of your installation settings, click **Back**.



IDERA SQL Inventory Manager Setup Wizard

☒ Install Directory
☒ Create Repositories
☒ Service Accounts
☒ **4 Review and Install**

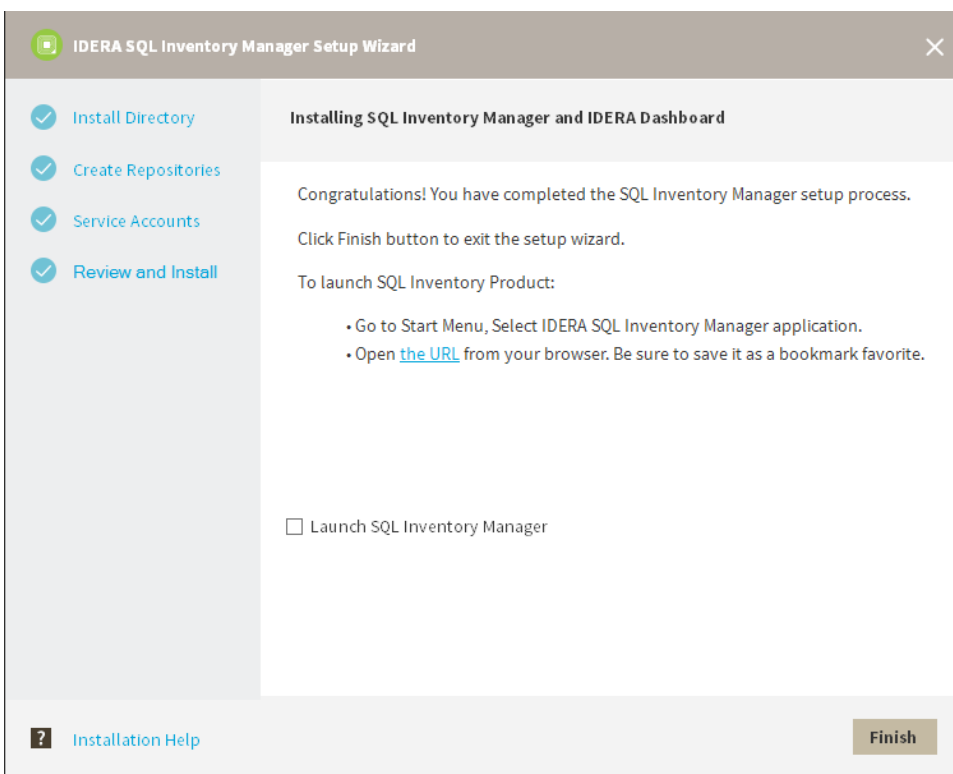
Review the setting for IDERA SQL Inventory Manager and IDERA Dashboard installation

IDERA SQL Inventory Manager	
Installation Location:	C:\Program Files\Idera\SQLInventory...
Display Name:	TestSim
SQL Server Instance:	(local)
Database Name:	SQLInventoryManagerRepository
Credentials/Authentication:	IDERAINFODEV\erevollo
Service Account Domain\UserName:	IDERAINFODEV\erevollo
IDERA Dashboard	
Installation Location:	C:\Program Files\Idera\Dashboard
Display Name:	IderaDashboard
SQL Server Instance:	(local)
Database Name:	IderaDashboardRepository
Credentials/Authentication:	IDERAINFODEV\erevollo
Service Account Domain\UserName:	IDERAINFODEV\erevollo

[? Installation Help](#)

8. After the installation is complete, you can select **Launch IDERA SQL Inventory Manager** to launch SQL Inventory Manager immediately after the installation window closes. Alternatively, you can access IDERA SQL Inventory Manager web application through the

following link: **http://<ServerName>:9291** where ServerName is the name of the machine on which you installed the IDERA SQL Inventory Manager services.



When IDERA SQL Inventory Manager launches on your browser, you should use your Windows user account with your respective password to log in to the product. Please take into account that IDERA SQL Inventory Manager does not store passwords.

[IDERA](#) | [Products](#) | [Purchase](#) | [Support](#) | [Community](#) | [Resources](#) | [About Us](#) | [Legal](#)