


Installing SQL Inventory Manager on an Availability Group

This section guides you through the installation of IDERA SQL Inventory Manager on an availability group. You can install IDERA SQL Inventory Manager on any system that meets or exceeds the [product requirements](#).

Before you install IDERA SQL Inventory Manager, be sure to have:

- A local administrator account on the machine you are installing the product.
- A host machine for SQL Inventory Manager services.
- A Clustered environment and an available SQL Server instance in the fail over cluster. For more information on configuring a fail over cluster refer to [Microsoft Documentation](#).
- An account with permissions to read/write and create databases and update their schemas.

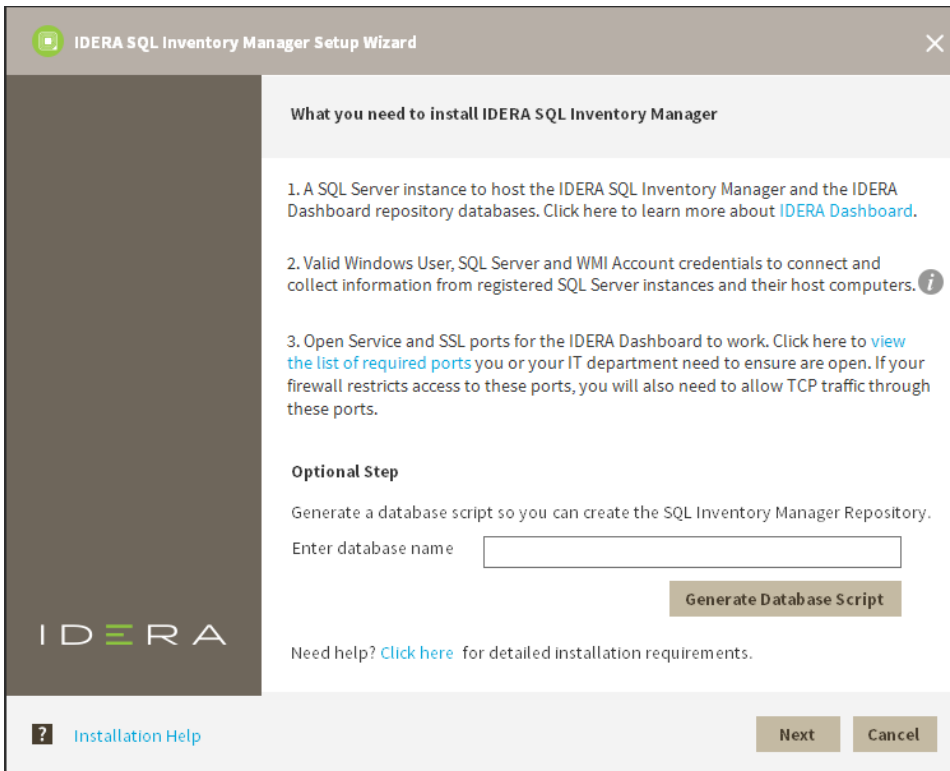
 You can also grant IDERA SQL Inventory Manager Product Administrator permissions in the IDERA Dashboard. For more information, see [Managing users in the IDERA Dashboard](#).

- [Installing IDERA SQL Inventory Manager](#)
 - [Configuring SQL Server](#)


Installing IDERA SQL Inventory Manager

Before you install IDERA SQL Inventory Manager, be sure to meet the requirements mentioned before. Open the installer and follow these steps:

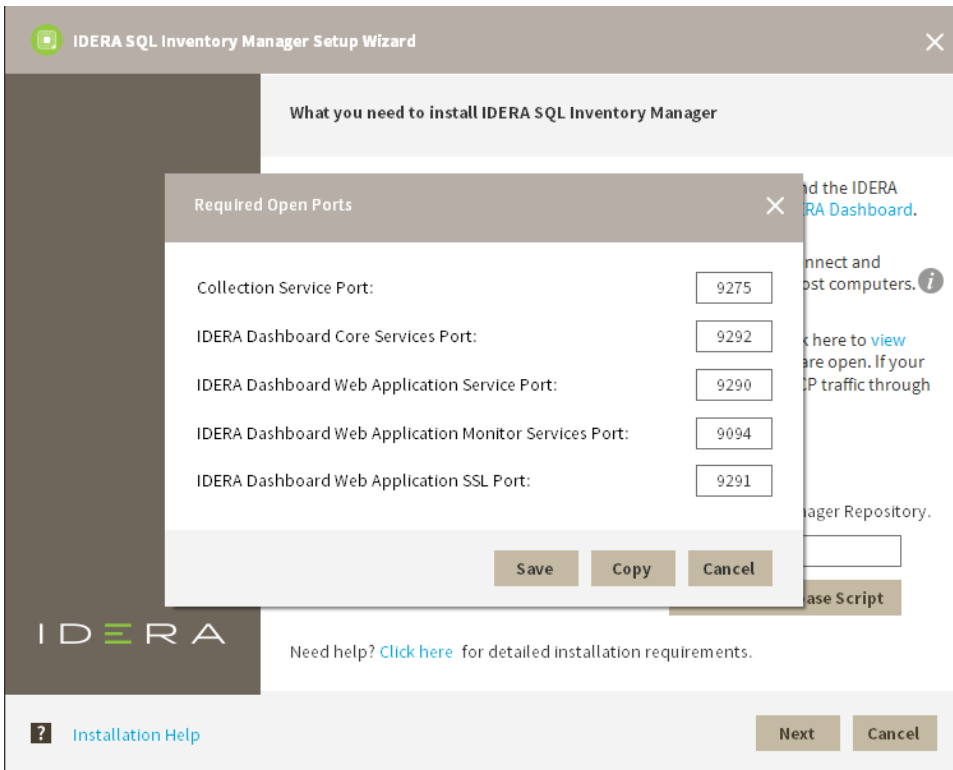
1. On the **IDERA SQL Inventory Manager Setup** window, click **Next** to continue with the installation. You can optionally generate a script for generating the SQL Inventory Manager Repository database.



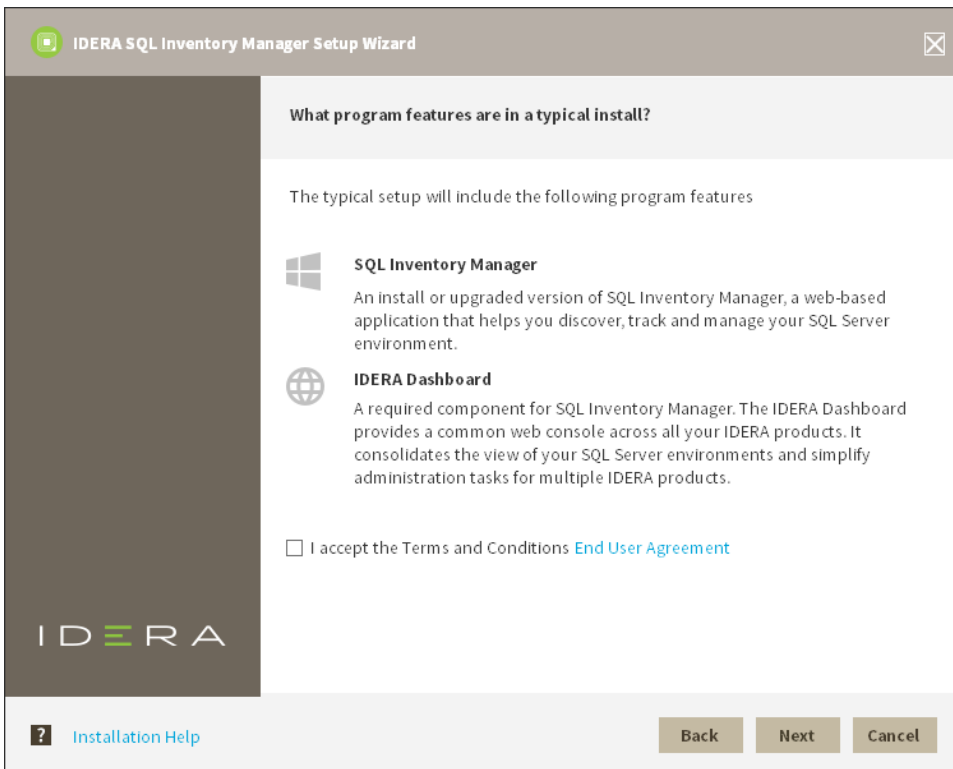
2. You must verify that the Firewall allows TCP (Transmission Control Protocol) traffic through **The ports you want to use**. By default, IDERA SQL Inventory Manager uses ports 9275 and 9291 for the Collection and Web Application services respectively. To see or edit the default ports SQL Inventory Manager uses click **view the list of required ports**.

 Port values should be between 1 and 65535.

Keep in mind, that browsers may block some specific ports. To check a list of all blocked ports on Mozilla Firefox, see [Mozilla Port Blocking](#).



3. Read the License Agreement. If you agree, click **I accept the Terms and Conditions** and then click **Next**.



4. On this section you can specify a Display Name for your SQL Inventory Manager installation and the location of both SQL Inventory Manager and IDERA Dashboard.

- a. If you want to change SQL Inventory Manager default path, click **Browse**.
 - b. On the **Display Name** box, type a unique name for this instance of IDERA SQL Inventory Manager. A Display Name allows you to identify each instance of IDERA SQL Inventory Manager or other IDERA products when you have more than one installation of the same product. IDERA recommends that you use a name based on a location or function, such as **SIM-Prod** or **SIM-West**. Note that this field accepts only alphanumeric characters (A-Z, a-z, 0-9) and dashes (-).
 - c. Choose **Install or upgrade locally** to install IDERA Dashboard on the default installation path. If you want to change IDERA Dashboard default path, click **Browse**. If you want to register SQL Inventory Manager with an existing remote IDERA Dashboard installation, choose **Use remote IDERA Dashboard Installation** and follow [these steps](#).
5. Specify a SQL Server cluster node and database name for the creation of the SQL Inventory Manager Repository database and the IDERA Dashboard Repository database respectively.

By default, the setup program uses your Windows logon account to create and access the Repository databases. Use Microsoft SQL Server connection credentials to install on an Availability Group, select **Use Microsoft SQL Server Authentication** and enter your credentials on the Microsoft SQL Server credentials dialog.

IDERA SQL Inventory Manager Setup Wizard

1 ☒ Install Directory

2 **Create Repositories**

3 ☐ Service Accounts

4 ☐ Review and Install

What instance, database name and credentials do you want to use to create the repositories?

Create IDERA SQL Inventory Manager Repository

SQL Server Instance:

Database Name:

☒ Use Windows Authentication: IDERAINFODEV\erevollo

☐ Use Microsoft SQL Server Authentication

Create IDERA Dashboard Repository

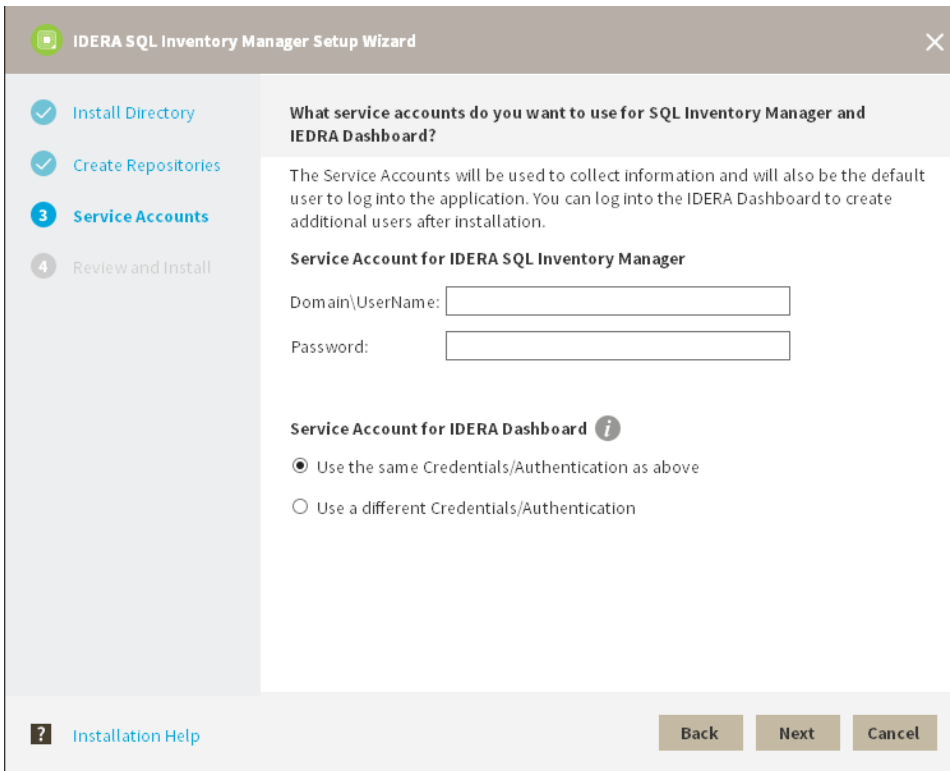
☒ Use the same Instance, Database Name and Credentials/Authentication as above

☐ Use a different Instance, Database Name and Credentials/Authentication

[? Installation Help](#)

- Specify a **User Name** and a **Password** for the Service Account for IDERA SQL Inventory Manager. Use the format *<Domain Name>\<User Name>*. IDERA SQL Inventory Manager uses this account to connect, discover, and gather configuration information from SQL Servers. The installer grants the "Log on as a Service" right to the account that you specify. Click **Next** to continue.

If you want to use different credentials for the Service Account for IDERA Dashboard, choose **Use different Credentials/Authentication**, and type your credentials. IDERA Dashboard uses this account when accessing the IDERA Dashboard to share data.



IDERA SQL Inventory Manager Setup Wizard

☒ Install Directory
☒ Create Repositories
☒ **3 Service Accounts**
☐ 4 Review and Install

What service accounts do you want to use for SQL Inventory Manager and IDERA Dashboard?

The Service Accounts will be used to collect information and will also be the default user to log into the application. You can log into the IDERA Dashboard to create additional users after installation.

Service Account for IDERA SQL Inventory Manager

Domain\UserName:

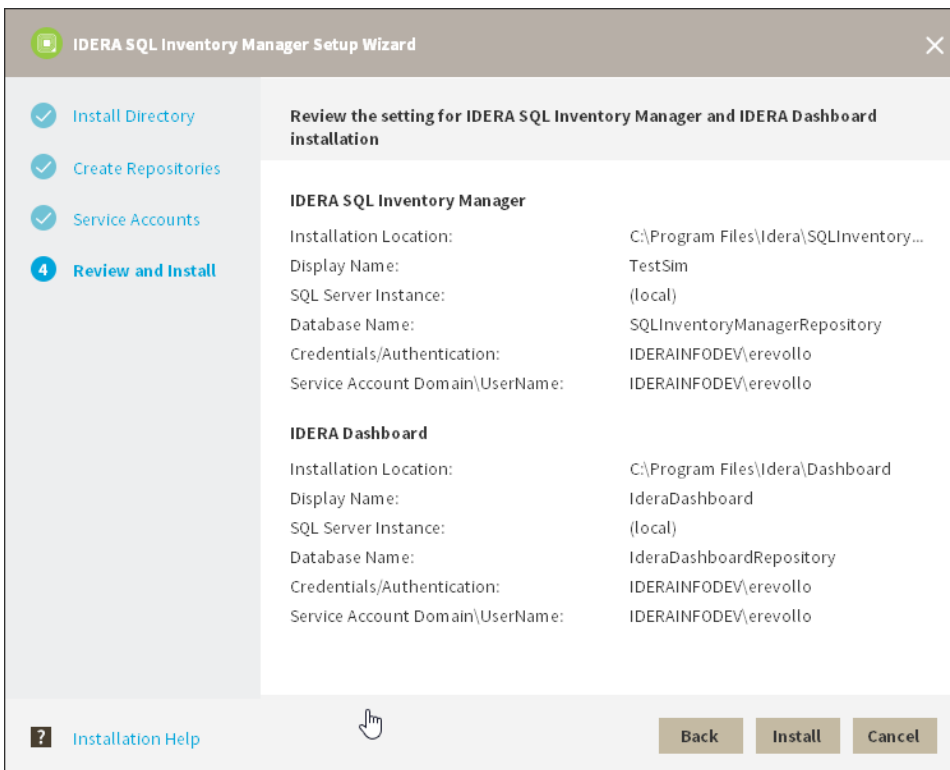
Password:

Service Account for IDERA Dashboard ⓘ

☒ Use the same Credentials/Authentication as above
☐ Use a different Credentials/Authentication

[? Installation Help](#)

7. Click **Install** if you are ready to start the installation. If you want to review or change any of your installation settings, click **Back**.



IDERA SQL Inventory Manager Setup Wizard

☒ Install Directory
☒ Create Repositories
☒ Service Accounts
☒ **4 Review and Install**

Review the setting for IDERA SQL Inventory Manager and IDERA Dashboard installation

| | |
|------------------------------------|--|
| IDERA SQL Inventory Manager | |
| Installation Location: | C:\Program Files\Idera\SQLInventory... |
| Display Name: | TestSim |
| SQL Server Instance: | (local) |
| Database Name: | SQLInventoryManagerRepository |
| Credentials/Authentication: | IDERAINFODEV\erevollo |
| Service Account Domain\UserName: | IDERAINFODEV\erevollo |
| IDERA Dashboard | |
| Installation Location: | C:\Program Files\Idera\Dashboard |
| Display Name: | IderaDashboard |
| SQL Server Instance: | (local) |
| Database Name: | IderaDashboardRepository |
| Credentials/Authentication: | IDERAINFODEV\erevollo |
| Service Account Domain\UserName: | IDERAINFODEV\erevollo |

[? Installation Help](#)

8. After the installation is complete, you can select **Launch IDERA SQL Inventory Manager** to launch SQL Inventory Manager immediately after the installation window closes. Alternatively, you can access IDERA SQL Inventory Manager web application through the

following link: <http://<ServerName>:9291> where ServerName is the name of the machine on which you installed the IDERA SQL Inventory Manager services.

When IDERA SQL Inventory Manager launches on your browser, you should use your Windows user account with your respective password to log in to the product. Please take into account that IDERA SQL Inventory Manager does not store passwords.

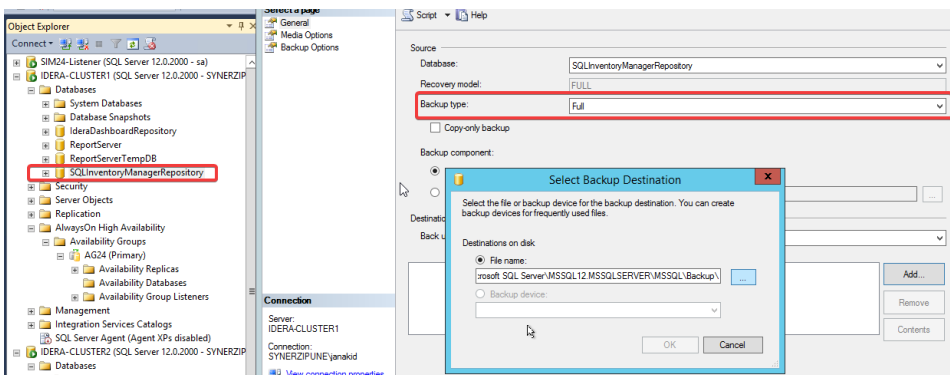
Configuring SQL Server

Once the SQL Inventory Manager installation completes, I launch SQL Server Management Studio and connect to the cluster environment's SQL Server Instance where you installed the SQL Inventory Manager Repository.

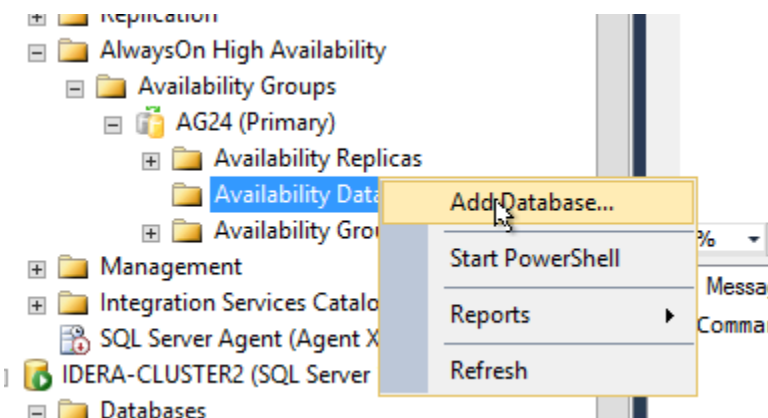
1. For the **SQLInventoryManager** database set its recovery model to "full".

```
USE master ;
ALTER DATABASE SQLInventoryManagerRepository SET RECOVERY FULL ;
```

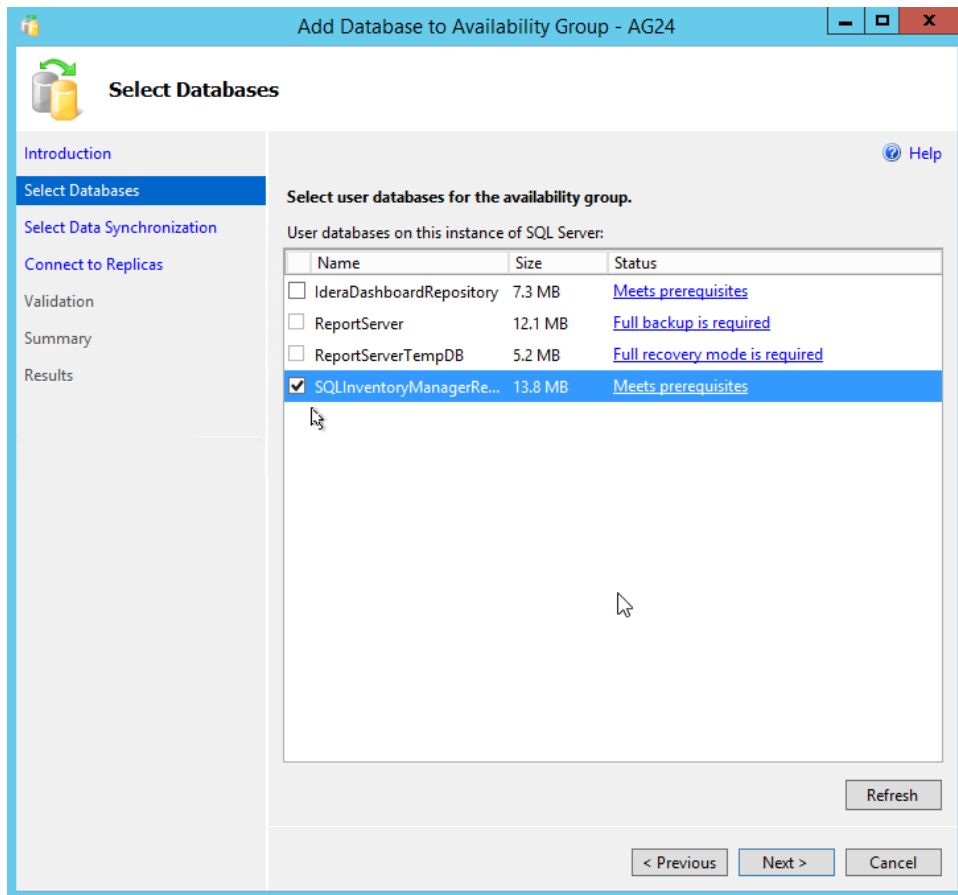
2. Create a Full backup for the **SQLInventoryManager** database.



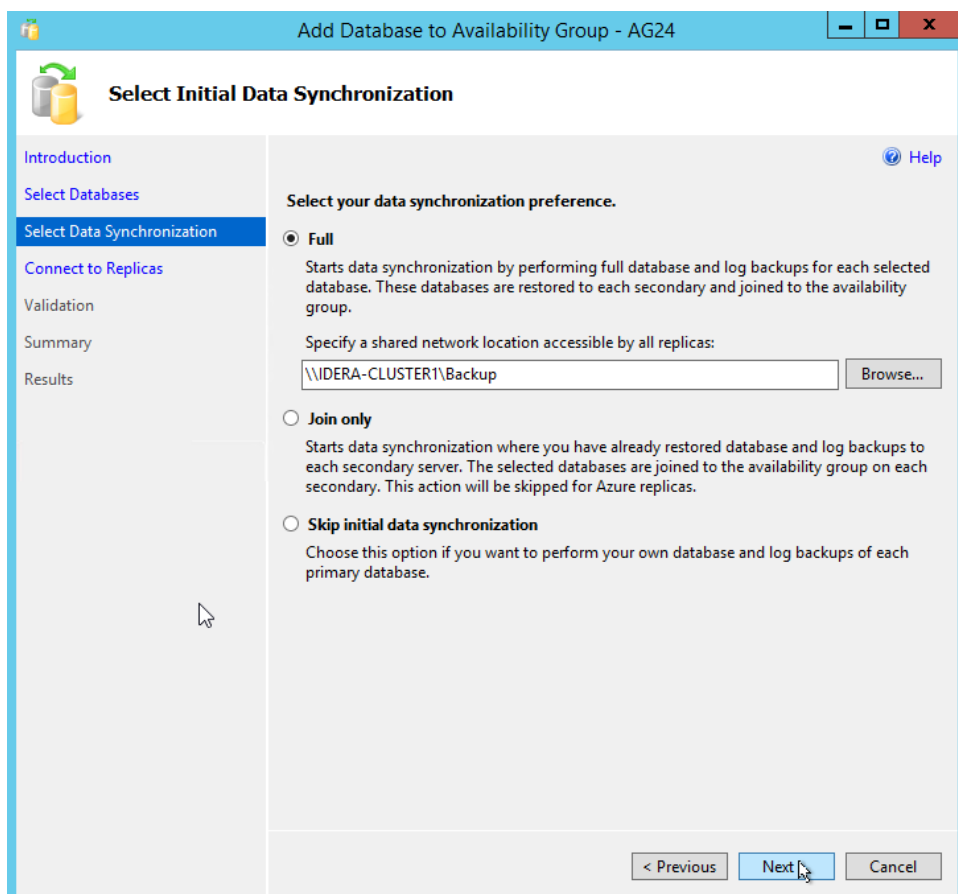
3. Under 'Always ON High Availability' go to the availability group you want to use and select **Add Database**



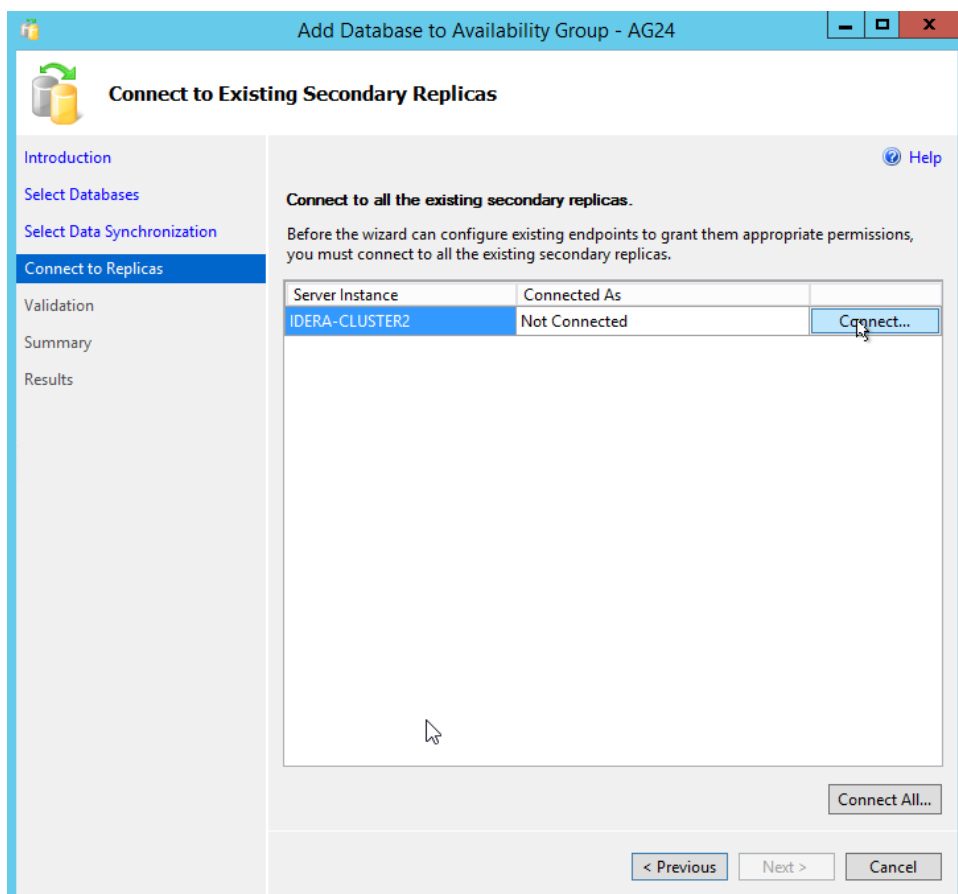
4. On the **Add Database to Availability Group** dialog click **Next** and follow these steps:
1. Select the **SQLInventoryManager** repository database and click **Next**.



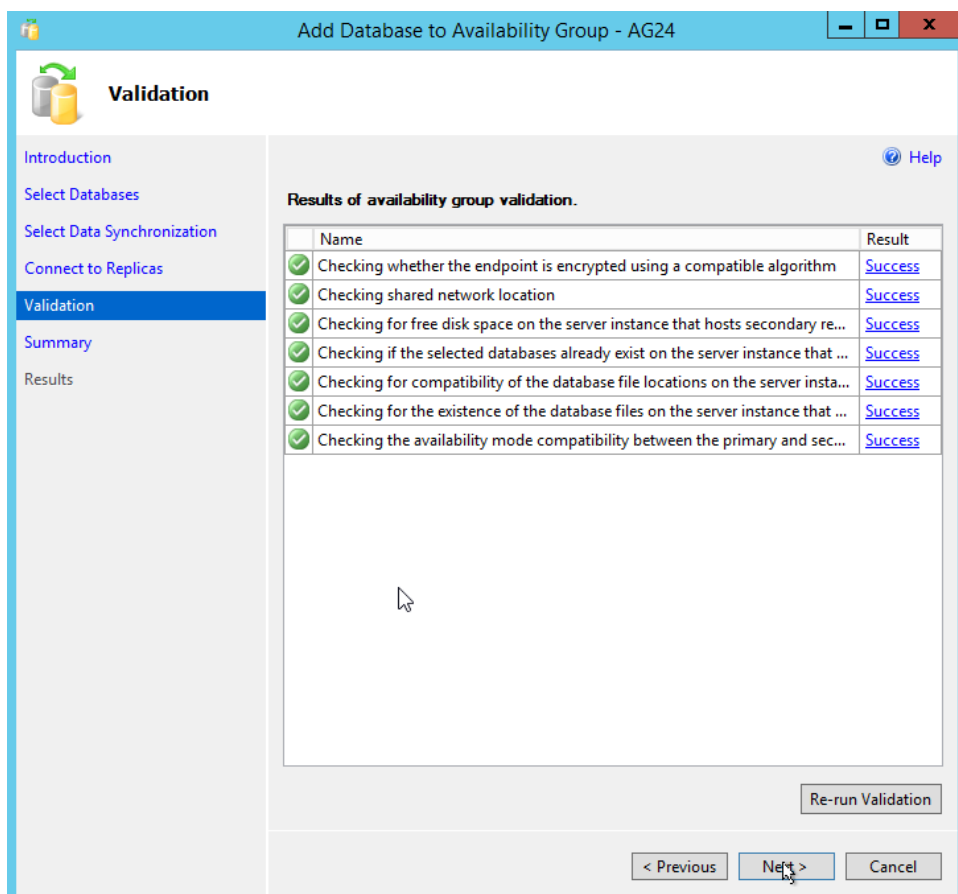
2. Select **Full** data synchronization and click **Next**.



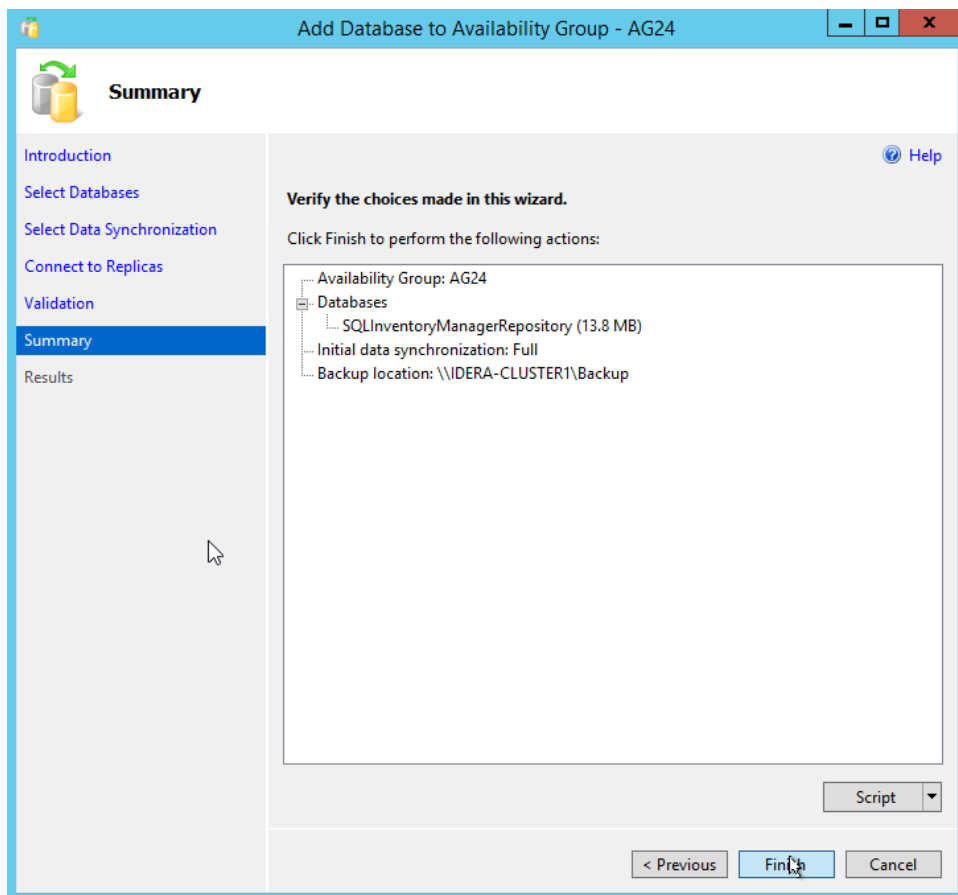
3. Connect to all secondary nodes and click **Next**.



4. Once validation finishes successfully click **Next**.



5. Check your settings on the **Summary** section and click **Finish** to continue.



6. Once the wizard completes click **Close**.

7. Go to the **Administration** tab of SQL Inventory Manager and [apply your license](#).

Manage License

Current License

Type:

Trial License

Status:

OK

Expiration Date:

Apr 11, 2017

Total Licensed Servers:

0

Monitored Servers:

1

Key:

AWQT6-H5WN7-YY882-5BWGS-4DJQB6

SQL Inventory Manager Repository:

AG16-Listener

New License

Apply

[Click here to buy more SQL Inventory Manager licenses](#)

Close

[IDERA](#) | [Products](#) | [Purchase](#) | [Support](#) | [Community](#) | [Resources](#) | [About Us](#) | [Legal](#)

13